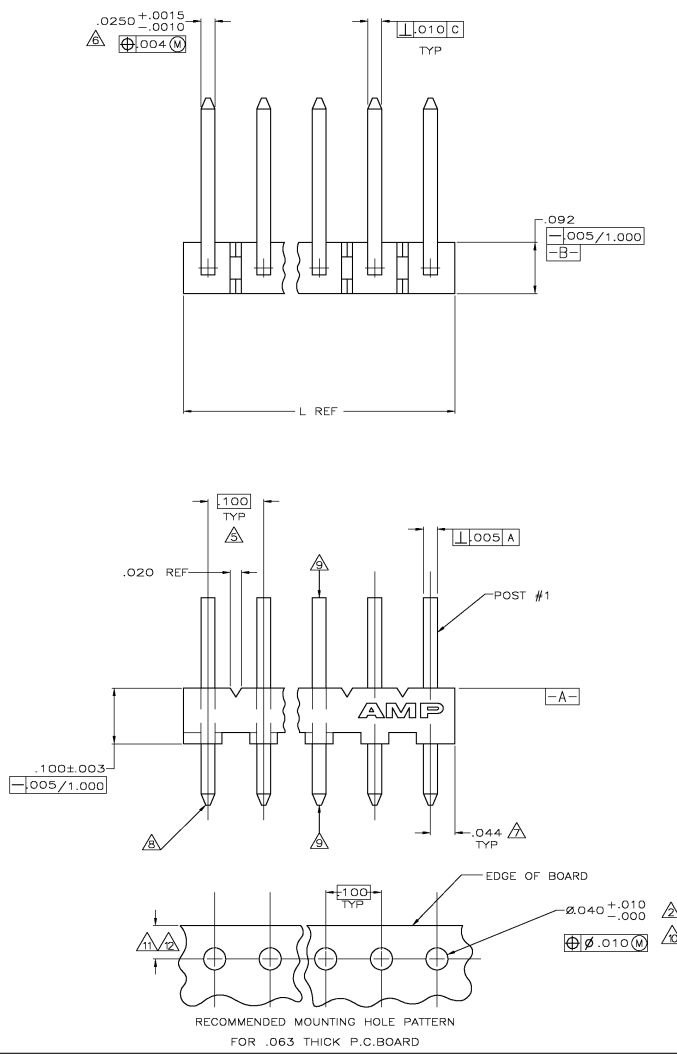


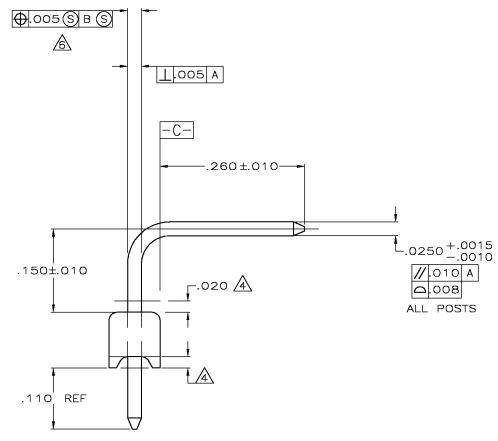
THIS DRAWING IS UNCONTROLLED IF IMPROPERLY RELEASED FOR REVISION
 © COMPANY BY TWO ELECTRONICS CORPORATION ALL RIGHTS RESERVED

REV	DATE	REVISIONS
CM	00	27MAY02
E		REVISED PER EC 0028-0347-03
		27MAY02 SC DB

D
C
B
A



- △ MATERIAL:
BASE: THERMOPLASTIC POLYESTER, UL 94V-0 (NATURAL).
- POST: COPPER ALLOY (TIN OR TIN-LEAD PLATED, .000150 MIN THK).
- △ ONE HOLE MAY BE UNDERSIZED (.032-.035 DIA) FOR ASSEMBLY RETENTION DURING WAVE SOLDERING.
- 3 PARTS MUST COMPLY WITH AMP SOLDERABILITY SPEC 109-11-2.
- △ PLASTIC AROUND POST PERMISSIBLE IN THIS AREA ONLY.
- △ DIMENSION APPLIES WHEN HEADER IS HELD FLAT.
- △ MEASURED AT -A-
- △ COORDINATE DIMENSION APPLIES FROM CENTER OF ACTUAL FEATURE.
- △ RADIUS AT TIP PERMITTED, BOTH ENDS.
- △ POST MUST WITHSTAND 3.0 LB MIN AXIAL FORCE IN BOTH DIRECTIONS WITHOUT DISLODGING.
- △ SOLDER SIDE OF BOARD IS SHOWN.
- △ DIMENSION SHOULD BE .060 MIN WHEN MATING WITH A MTA-100 CONNECTOR ASSEMBLY OR A CST-100 CONNECTOR.
- △ DIMENSION SHOULD BE .060-.340 WHEN MATING CONNECTOR WIRING EXITS HOUSING INTO BOARD.
- 1.3. AMP LOGO MAY OR MAY NOT APPEAR ON MOLDING HOUSING.



NO. OF POSTS	IN	MM	NO. OF CIRCUITS	PART NUMBER
28	2.788	70.82	28	5-644457-8
27	2.688	68.28	27	5-644457-7
26	2.588	65.74	26	5-644457-6
25	2.488	63.20	25	5-644457-5
24	2.388	60.66	24	5-644457-4
23	2.288	58.12	23	5-644457-3
22	2.188	55.58	22	5-644457-2
21	2.088	53.04	21	5-644457-1
20	1.988	50.50	20	5-644457-0
19	1.888	47.96	19	4-644457-9
18	1.788	45.42	18	4-644457-8
17	1.688	42.88	17	4-644457-7
16	1.588	40.34	16	4-644457-6
15	1.488	37.80	15	4-644457-5
14	1.388	35.26	14	4-644457-4
13	1.288	32.72	13	4-644457-3
12	1.188	30.18	12	4-644457-2
11	1.088	27.64	11	4-644457-1
10	.988	25.10	10	4-644457-0
9	.888	22.56	9	3-644457-9
8	.788	20.02	8	3-644457-8
7	.688	17.48	7	3-644457-7
6	.588	14.94	6	3-644457-6
5	.488	12.40	5	3-644457-5
4	.388	9.86	4	3-644457-4
3	.288	7.32	3	3-644457-3
2	.188	4.78	2	3-644457-2

THIS DRAWING IS A CONTROLLED DOCUMENT.

DESIGNED BY	27MAY02	DATE	27MAY02
DRAWN BY	27MAY02	DATE	27MAY02
CHECKED BY		DATE	
APPROVED BY		DATE	

Two Electronics Corporation
 Henderson, NV 89015

MTA-100 HEADER ASSEMBLY, NARROW, .025 SQUARE RIGHT ANGLE POST, TIN OR TIN-LEAD PLATED

SIZE ONE SIDE DRAWING NO. 644457

CUSTOMER DRAWING A100779

SCALE 10:1

REV 1