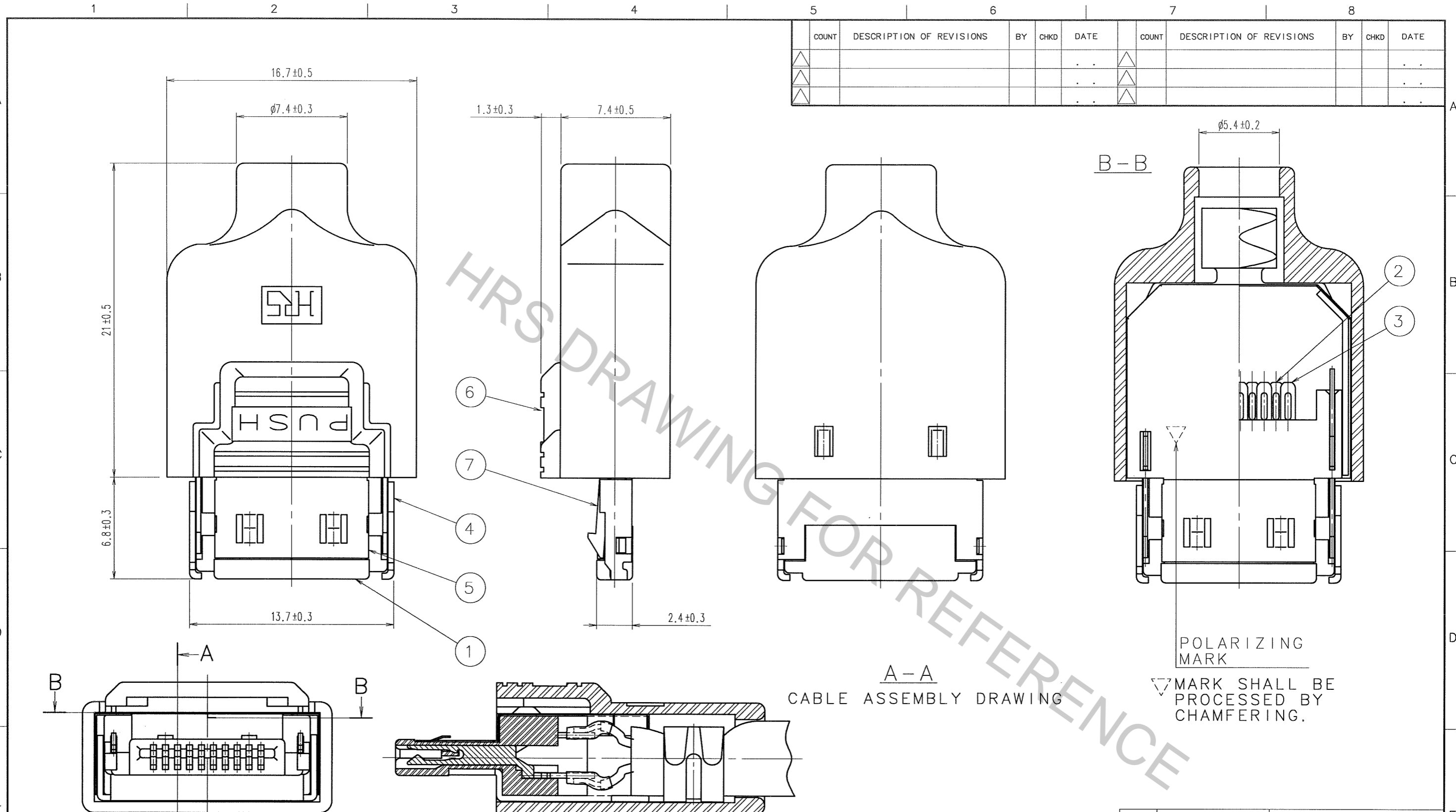


Apr.1.2017 Copyright 2017 HIROSE ELECTRIC CO., LTD. All Rights Reserved.



COUNT	DESCRIPTION OF REVISIONS	BY	CHKD	DATE	COUNT	DESCRIPTION OF REVISIONS	BY	CHKD	DATE

A-A
CABLE ASSEMBLY DRAWING

POLARIZING MARK
 MARK SHALL BE PROCESSED BY CHAMFERING.

NOTE 1. THE COMPONENT PART NO. ④ ⑤ ⑥ SHALL BE ATTACHED.

②	PLATING	
	CONTACT AREA	GOLD 0.2 μ m min.
	LEAD AREA	GOLD 0.03 μ m min.
	UNDER PLATING	NICKEL 2 μ m min.

3	COPPER ALLOY	②	7	STAINLESS STEEL	
2	COPPER ALLOY	②	6	PC	(BLACK)
1	PPS	(BLACK) (UL94V-0)	5	PHOSPHOR BRONZE	NICKEL 1 μ m min.
			4	BRASS	NICKEL 1 μ m min.
NO.	MATERIAL	FINISH, REMARKS	NO.	MATERIAL	FINISH, REMARKS

CODE NO. (OLD)	DRAWN	DESIGNED	CHECKED	APPROVED	RELEASED
	E. Wakana	H. Kikuchi	N. Miyajima	[Signature]	
	'06.09.08	'06.09.08	'06.09.08	'06.09.08	

SCALE	DRAWING NO.	PART NO.
4 : 1	EDC3-047968-02	3240-10P-C(50)
UNITS	HIROSE ELECTRIC CO., LTD	CODE NO.
mm		CL232-0048-8-50

TO