

Class 2 Transformers designed for Chassis Mounting

Inherently or Non-Inherently Limited



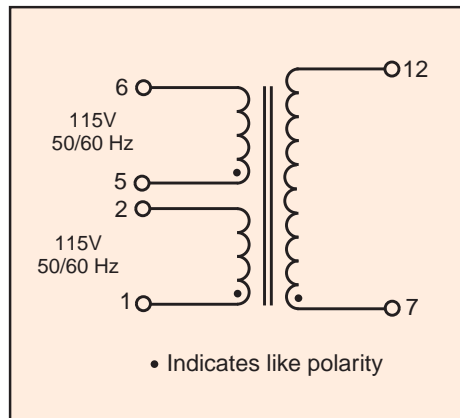
Signal's CL2 transformers are available in printed circuit and chassis mount versions. They are supplied as inherently or non-inherently limited units that are UL 1585 / UL 5085 recognized.

General Specifications

- Power - 25 VA to 80 VA
- Dielectric Strength - 4000 Vrms Hipot
- Primaries - Dual primaries, 115/230 V, 50/60 Hz,
- Secondaries - Single secondary
- Class 2 Rating - Inherently or non-inherently limited (secondary fuse requirements below)
- Electrostatic Shield - Not necessary, split or dual bobbin construction
- Terminals - Solder lug/quick connect type terminals
- Insulation System - Class F insulation, 155° C
- Flammability Rating - Bobbin and shroud material meet UL 94V0

Agency Certifications

- UL recognized to UL 1585 / UL 5085-3, File # E116583
- CSA certified to C22.2 #66.1



Primaries are designed to be used simultaneously. That is, they must be used either series or parallel connected (as one winding).

| Part Number | SecondaryRMS Rating | Secondary Fuse Required |
|-------------|---------------------|-------------------------|
| CL2-25-12 | 12V @ 2.10A | 2.5A* |
| CL2-25-24 | 24V @ 1.05A | 1.5A* |
| CL2-40-12 | 12V @ 3.33A | 4.0A* |
| CL2-40-24 | 24V @ 1.66A | 2.0A* |
| CL2-80-24 | 24V @ 3.33A | 3.5A* |

* Non-inherently limited
Maximum secondary fuse value specified
All primaries are 115/230 V, 50/60 Hz

Custom versions available upon request.

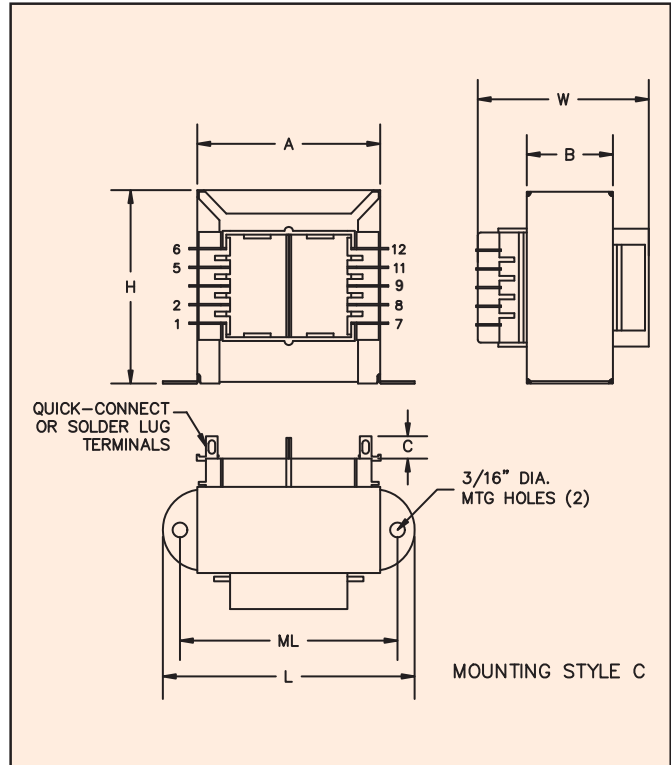
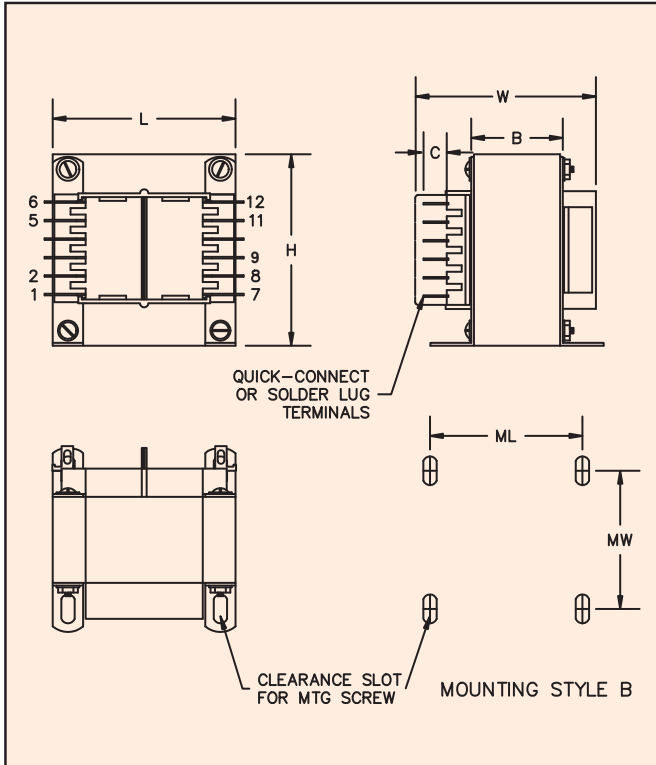
©2015 Signal Transformer Inc. Specifications subject to change without notice. 07.15



500 Bayview Avenue, Inwood, NY 11096
Toll Free 866-239-5777 • Tel 516-239-5777 • Fax 516-239-7208
sales@signaltransformer.com • techhelp@signaltransformer.com

Class 2 Transformers designed for Chassis Mounting

Inherently or Non-Inherently Limited



| VA | Dimensions | | | | | | Terminals | Mounting Style | Mounting Dimensions | | Mounting Screw | Weight |
|------|----------------|----------------|----------------|----------------|----------------|---------------|---------------|----------------|---------------------|----------------|----------------|----------------|
| | L | W | H | A | B | C | | | ML | MW | | |
| Size | Inches (mm) | | | | | | Inches (mm) | | | | | |
| 25 | 2.81 (71.4) | 2.14 (54.4) | 2.31 (58.7) | 2.00 (50.8) | 1.12 (28.6) | .31 (7.92) | .18 (4.75) | C | 2.37 (60.3) | — | #6 | 1.25 (0.57) |
| 40 | 3.12 (79.4) | 2.14 (54.4) | 2.68 (68.2) | 2.25 (57.2) | 1.12 (28.6) | .31 (7.92) | .18 (4.75) | C | 2.81 (71.4) | — | #6 | 1.6 (0.73) |
| 80 | 2.50 (63.5) | 2.53 (64.3) | 3.06 (77.7) | — | 1.37 (34.9) | .31 (7.92) | .18 (4.75) | B | 2.00 (50.8) | 2.18 (55.5) | #6 | 2.8 (1.27) |

Custom versions available upon request.

©2015 Signal Transformer Inc. Specifications subject to change without notice. 07.15



www.signaltransformer.com

500 Bayview Avenue, Inwood, NY 11096
 Toll Free 866-239-5777 • Tel 516-239-5777 • Fax 516-239-7208
 sales@signaltransformer.com • techhelp@signaltransformer.com