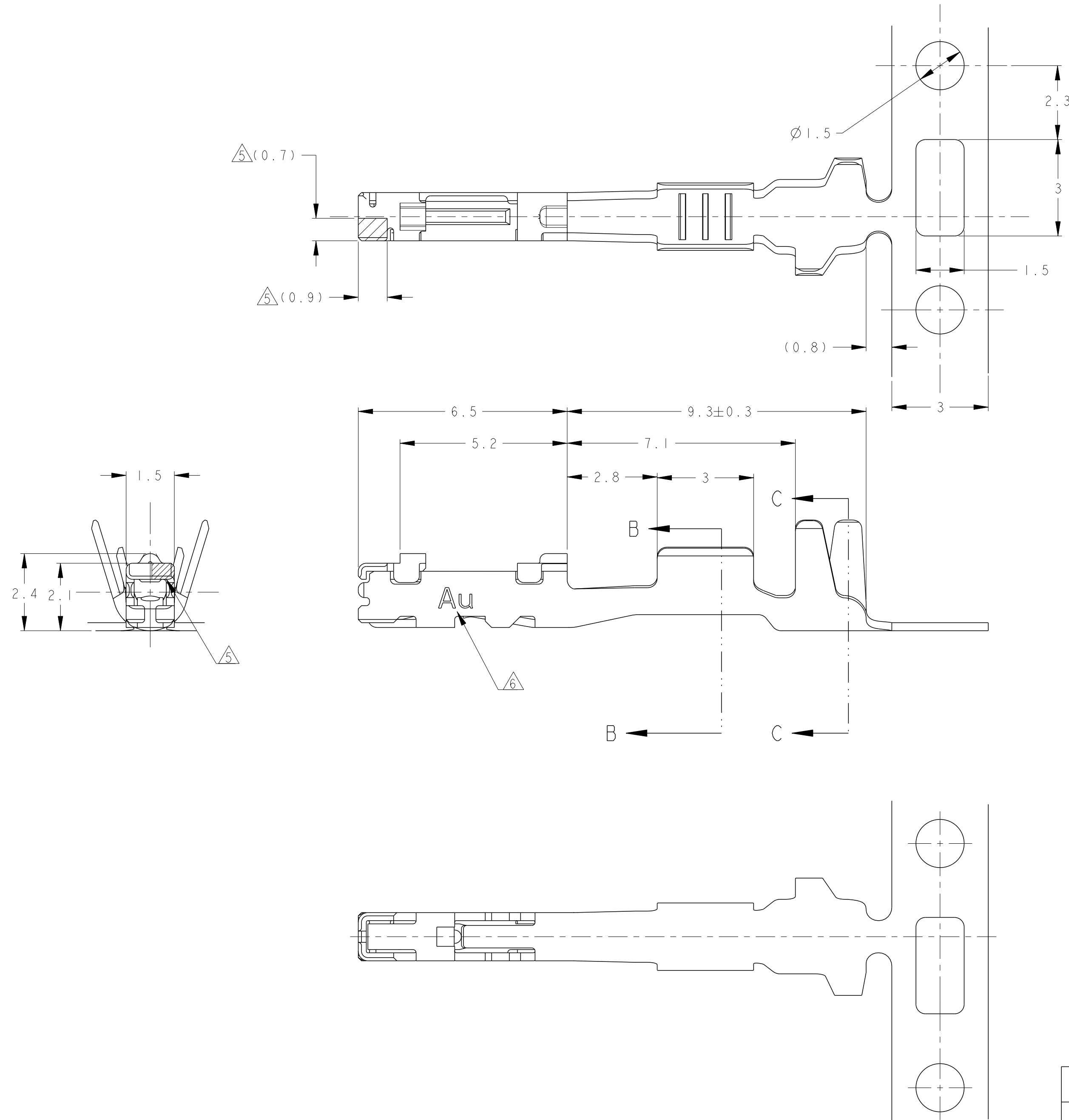


THIS DRAWING IS UNPUBLISHED. RELEASED FOR PUBLICATION 20  
 © COPYRIGHT 2015 ALL RIGHTS RESERVED.

LOC	DIST	REVISIONS					
J	-	P	LTR	DESCRIPTION	DATE	DWN	APVD
		A		RELEASED	11MAY06	SS	KS
		A1		REVISED ECR-10-023798	22NOV10	SS	HY
		B		REVISED ECR-15-013494	18SEP15	KK	RK



1. APPLICABLE WIRE RANGE;  
 CHFUS 0.35mm<sup>2</sup>  
 AVSS/AVSSH/AVSSX/AESSX/CAVS 0.3mm<sup>2</sup>  
 CAN 0.22mm<sup>2</sup>
  2. APPLICATION SPEC; 114-5336
  3. APPLICATOR FEED; 7.6mm.
  4. TAB P/N; 1612289
5. GOLD PLATED AREA FOR DISCRIMINATION.  
 6. MARKING FOR IDENTIFICATION.

1. 適用電線:  
 CHFUS 0.35mm<sup>2</sup>  
 AVSS/AVSSH/AVSSX/AESSX/CAVS 0.3mm<sup>2</sup>  
 CAN 0.22mm<sup>2</sup>
  2. 取付適用規格: 114-5336
  3. アプリケータ送りのピッチ: 7.6mm
  4. 適用TAB型番: 1612289
5. 識別用金めっき範囲を示す。  
 6. 識別用刻印

5 6 SELECTIVE GOLD, TIN	1612290-2
PRE-TIN	1612290-1
FINISH	PART NO

THIS DRAWING IS A CONTROLLED DOCUMENT.		DWN S. SHISHIKURA CHK K. SAKAMAKI APVD S. ISOHATA	IIMAY06 IIMAY06 IIMAY06	TE Connectivity	
DIMENSIONS: 単位: 尺 mm	TOLERANCES UNLESS OTHERWISE SPECIFIED: 一般公差 ±0.2 0-PLC ±0.3 1-PLC ±0.10 2-PLC ±0.001 3-PLC ±0.001 ANGLES ±3°00'	PRODUCT SPEC 108-5891	APPLICATION SPEC 114-5336	NAME SEALD 0.64 RECEPTACLE CONTACT	
MATERIAL 材料 COPPER ALLOY	FINISH 仕上 SEE TABLE	WEIGHT 0.16 g	SCALE 10:1	DRAWING NO A200779	RESTRICTED TO -
CUSTOMER DRAWING			CAGE CODE A200779	DRAWING NO C-1612290	SHEET 1 OF 1