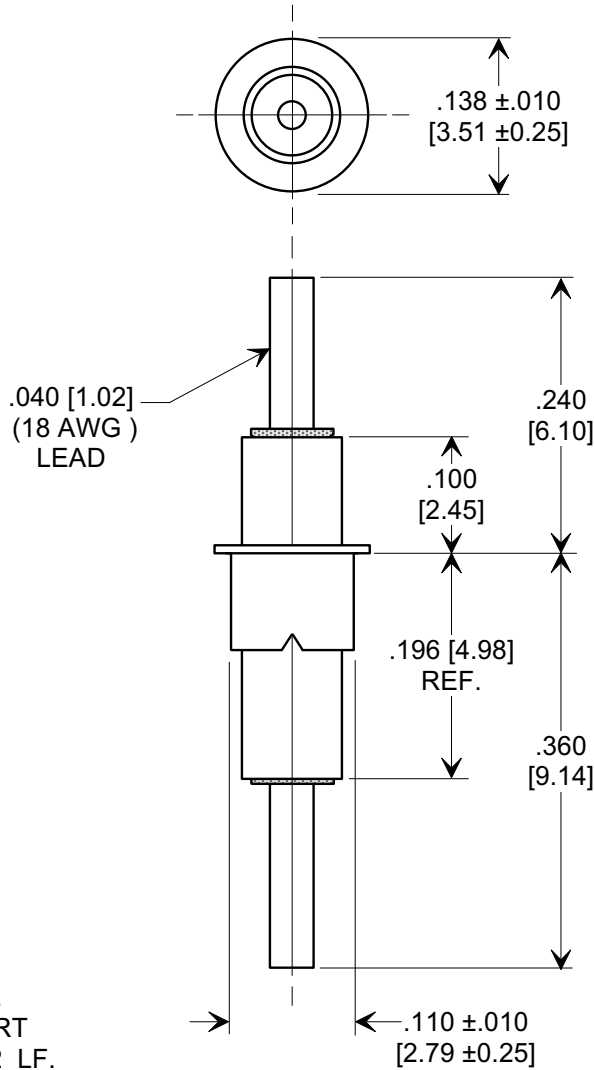
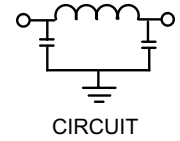
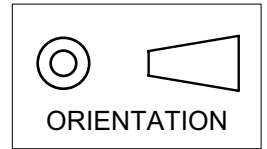


MARKETING SALES DRAWING
DIMENSIONS IN INCHES - DO NOT SCALE THIS DRAWING
DIMENSIONS IN METRIC - []

Electrical Testing
per Tusonix standard
test plans and Mil-Std-202
Test Methods.



NOTES:

- TUSONIX STANDARD PART
NUMBER: 4100-002.
TUSONIX RoHS COMPLIANT PART
NUMBER: 4100-002 LF.
CUSTOMER MUST SPECIFY STANDARD OR
RoHS PART NUMBER WHEN ORDERING.
- LEAD FINISH: STANDARD PART #: 60/40 SOLDER PLATED.
RoHS PART #: SILVER PLATED.
- EYELET FINISH: STANDARD PART #: 60/40 SOLDER PLATED.
RoHS PART #: SILVER PLATED.
- PART MARKING: STANDARD, NO MARKING.
RoHS PART: GREEN DOT ON INSULATION BAND,
TYPICAL LOCATION.

| MIN. CAP. pF | WORKING VOLTAGE | | CURRENT Idc. | I.R. MIN. @ 100 (VDC.) | DWV (VDC) | MINIMUM NO LOAD INSERTION LOSS (dB) AT 25°C PER MIL-STD-220 | | | |
|--------------|-----------------|-------|--------------|------------------------|-----------|-------------------------------------------------------------|---------|-------|--------|
| | 85°C | 125°C | | | | 10 MHz | 100 MHz | 1 GHz | 10 GHz |
| 1500 | 350 | 200 | 15 A | 10 G | 700 | 5 | 25 | 60 | 60 |

| | | | | | | | | |
|--------------|------------------------------------------------|----------------------|-----------------------------------|----------------------------------------------|--------------------------------|---------------|-------|-----|
| X-2015 Rev-0 | REVISION RECORD | | | --TOLERANCES-- Unless Otherwise Specified | Title | | | |
| | Original Release C.O. 1653 | 0 | | | EYELET STYLE EMI FILTER | | | |
| | CURRENT UNIT "A" ADDED L.E. 08-20-85 | 1 | RND TO COMP FMT. S.M. 07-18-00 | DECIMAL $\pm .031$ [0.79] | Drawn | S.M. 07-13-00 | Scale | 6 X |
| | ADDED NOTES, I.R, DWV & CIRCUIT. S.M. 06-06-05 | 2 | 20000717-5-06 | ANGLES \pm | Approved | T.C. 07-13-00 | | |
| | 3 | 20050526-4-06 | TUSONIX TUCSON, ARIZONA | A | 4100-002 | | | |