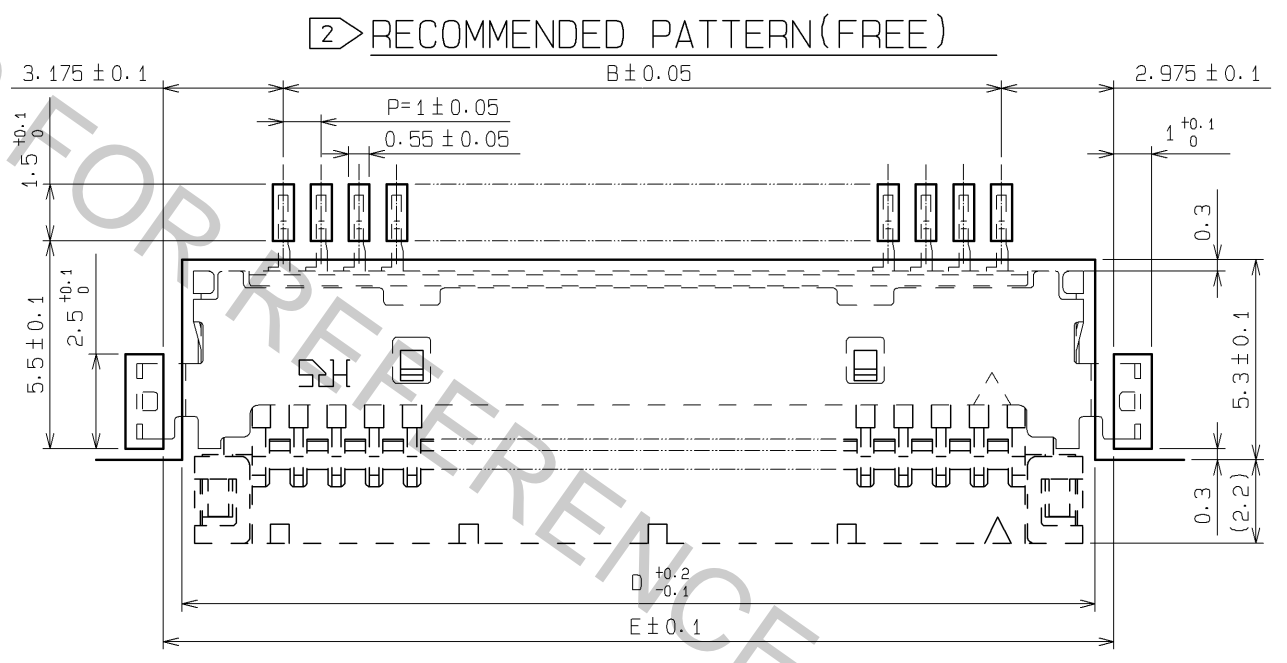
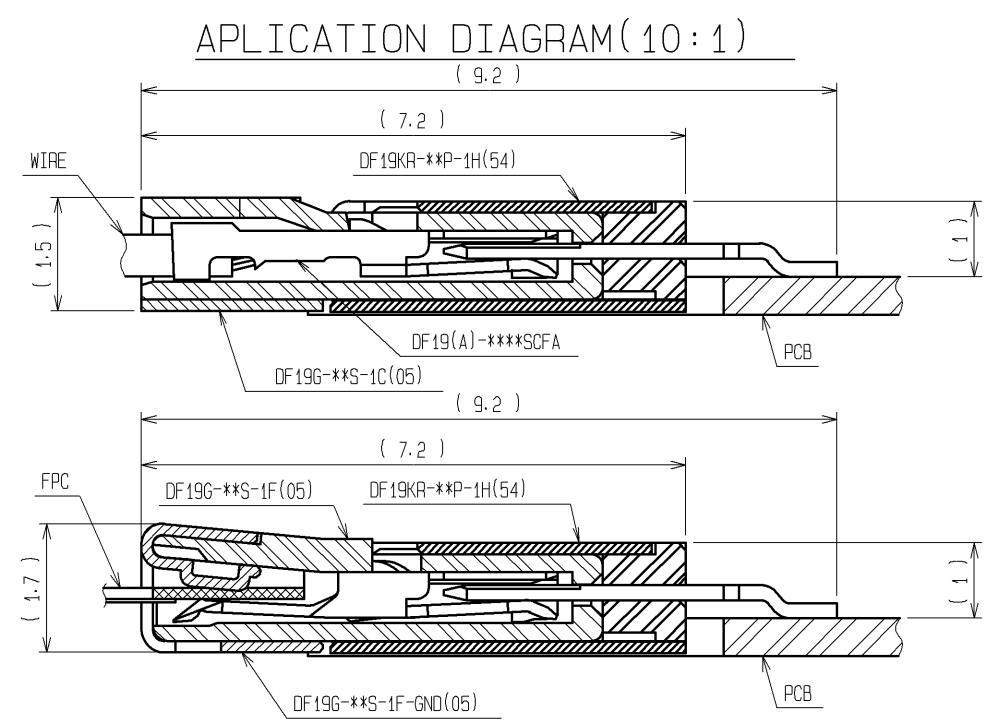
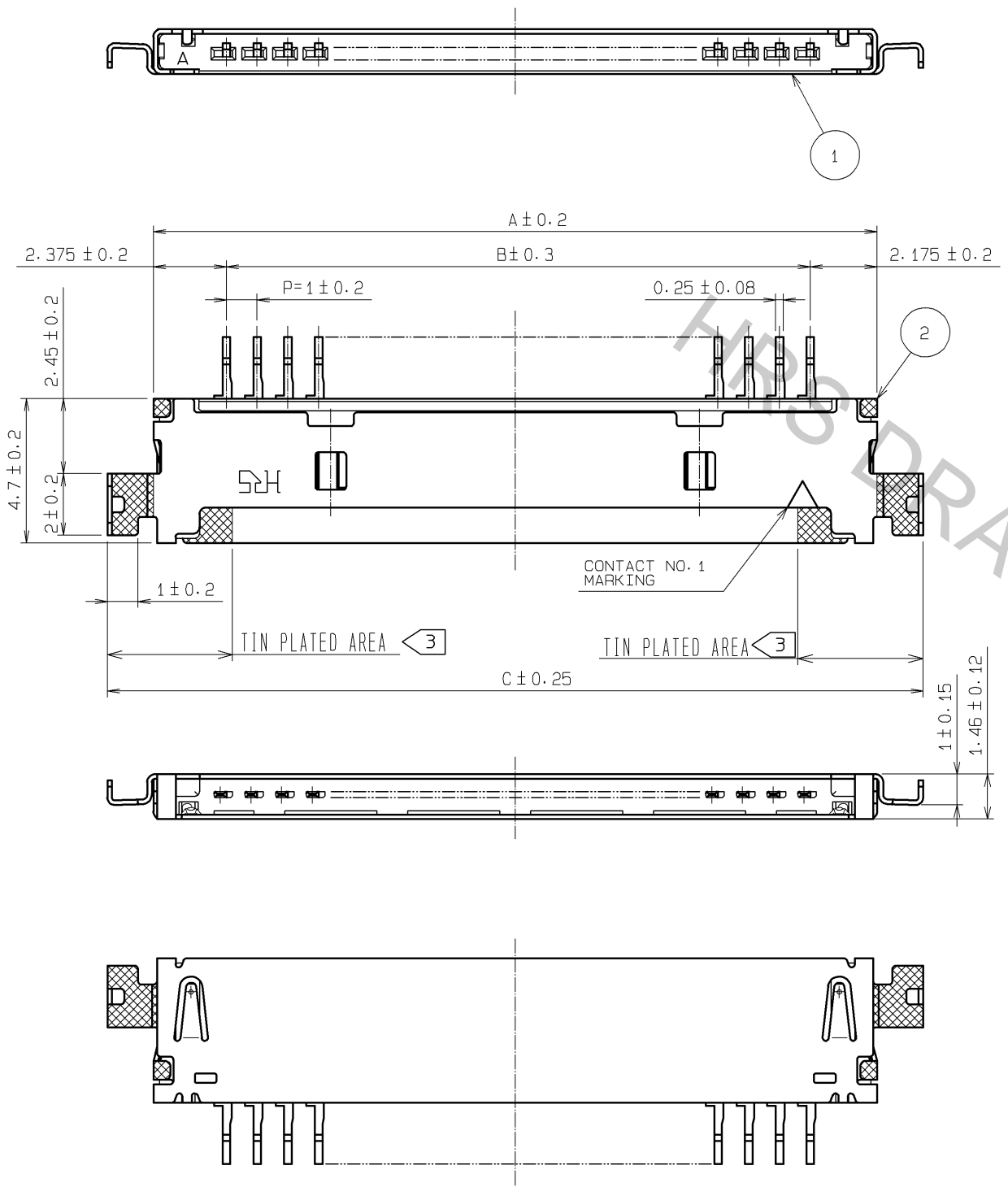


Apr.1.2017 Copyright 2017 HIROSE ELECTRIC CO., LTD. All Rights Reserved.



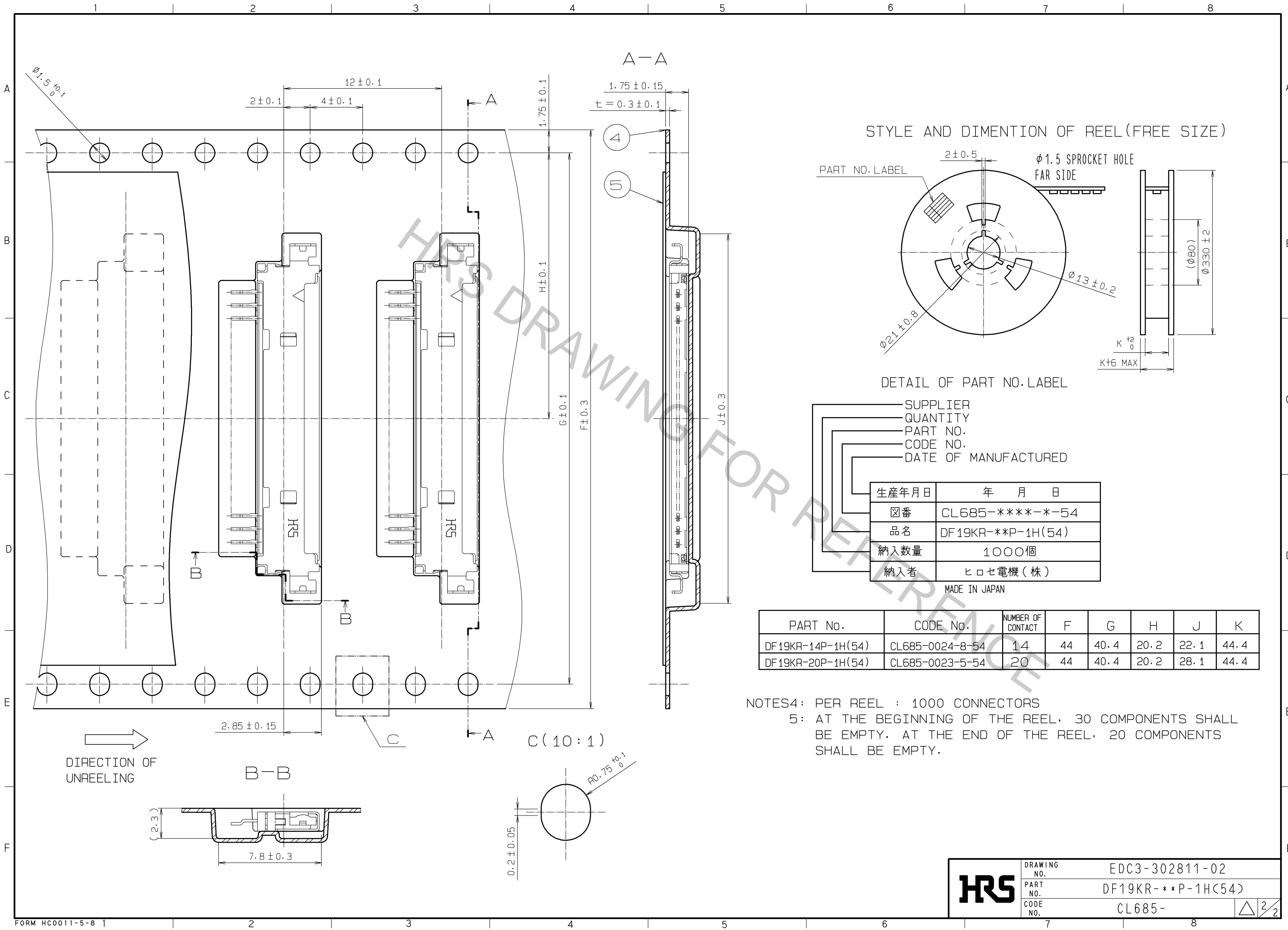
PART No.	CODE No.	NUMBER OF CONTACT	A	B	C	D	E
DF19KR-14P-1H(54)	CL685-0024-8-54	14	17.55	13	20.55	18.15	19.15
DF19KR-20P-1H(54)	CL685-0023-5-54	20	23.55	19	26.55	24.15	25.15

NOTES1: LEAD CO-PLANARITY SHALL BE 0.1 mm MAX.
 2) RECOMMENDED THICKNESS OF CREAM SOLDER PASTE: 0.15mm
 OPEN AREA RATIO: 100%

NO.	MATERIAL	FINISH, REMARKS	NO.	MATERIAL	FINISH, REMARKS
2	PHOSPHER BRONZE	LEAD AREA:TIN PLATED 1#m min UNDER PLATING-NICKEL PLATED 0.5#m min	3	PHOSPHER BRONZE	LEAD AREA:TIN-COPPER PLATED 1#m min UNDER PLATING-NICKEL PLATED 1#m min
1	POLYAMIDE	BLACK, UL94V-0	4	PS	CLEAR, (EMBOSSD CARRIER TAPE)
			5	POLYESTER	CLEAR, (COVER TAPE)

UNITS	SCALE	COUNT	DESCRIPTION OF REVISIONS	DESIGNED	CHECKED	DATE
mm	5 : 1	△	APPROVED : TS. SAKATA 09.03.02			
			CHECKED : TS. KUMAZAWA 09.03.02			
			DESIGNED : SN. KOBAYASHI 09.02.27			
			DRAWN : SN. KOBAYASHI 09.02.27			

DRAWING NO.	PART NO.	CODE NO.
EDC3-302811-02	DF19KR-**-P-1H(54)	CL685-



HRS	DRAWING NO.	EDC3-302811-02
	PART NO.	DF19KR-**P-1H(54)
	CODE NO.	CL685-