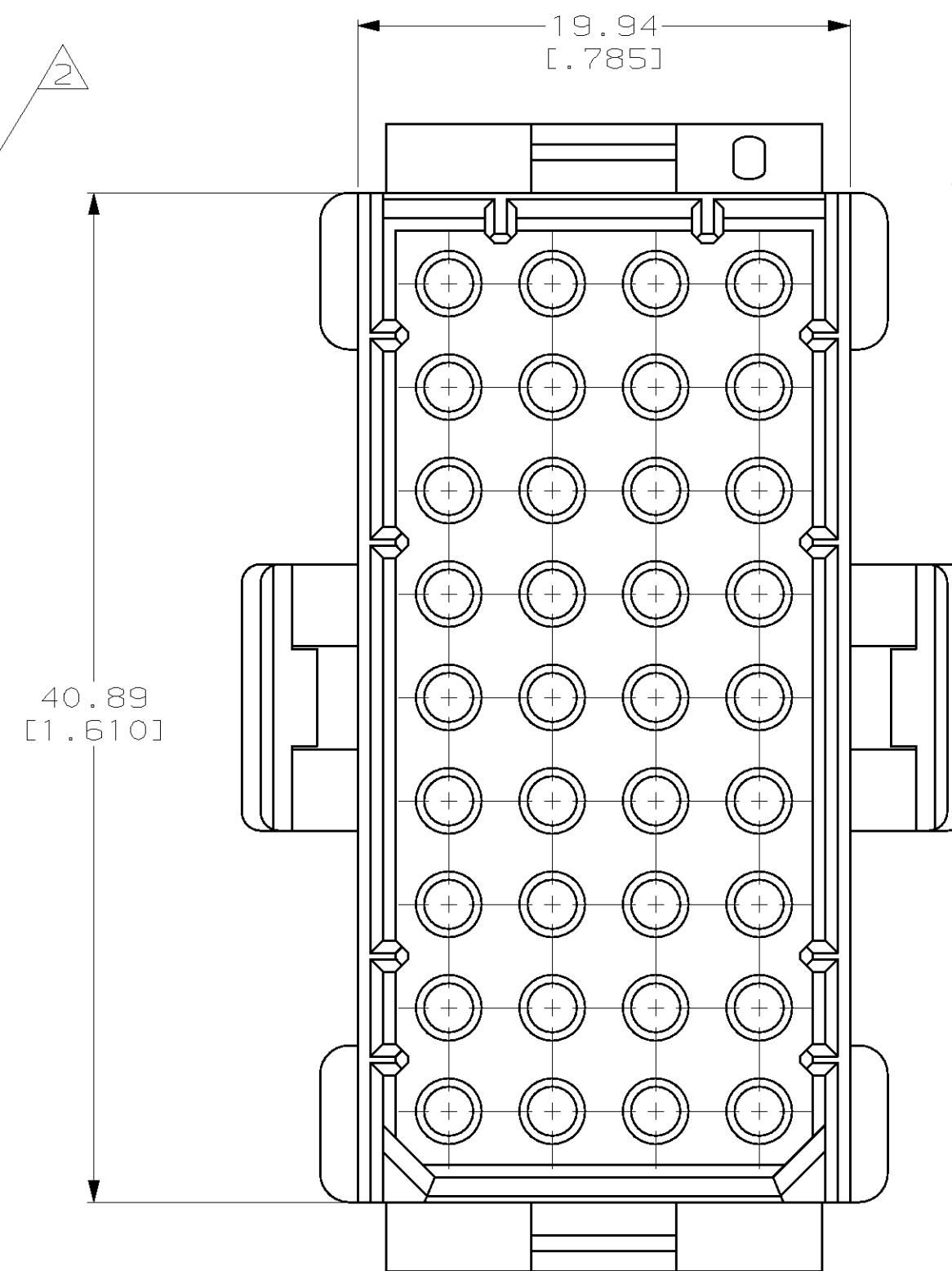
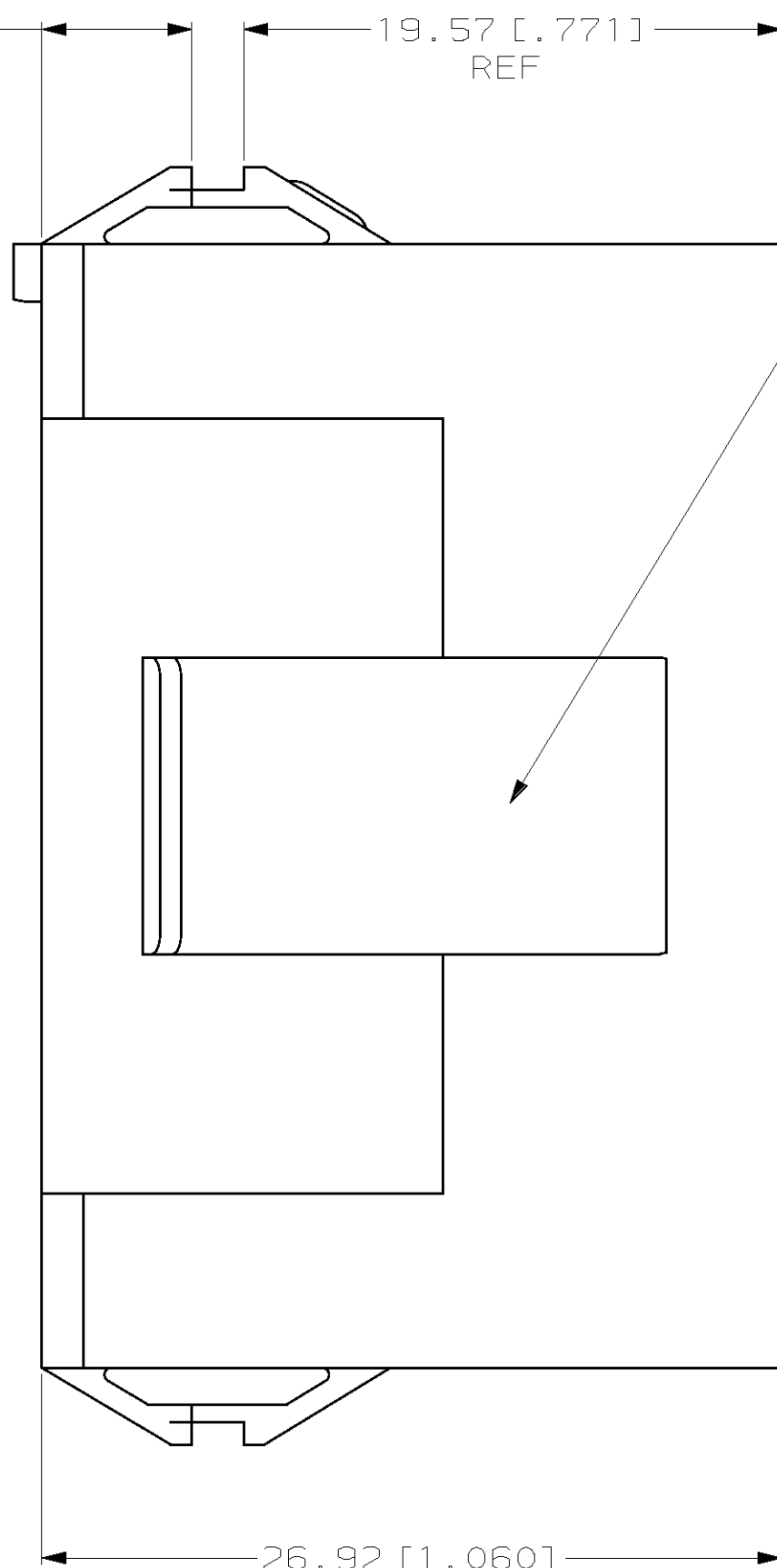
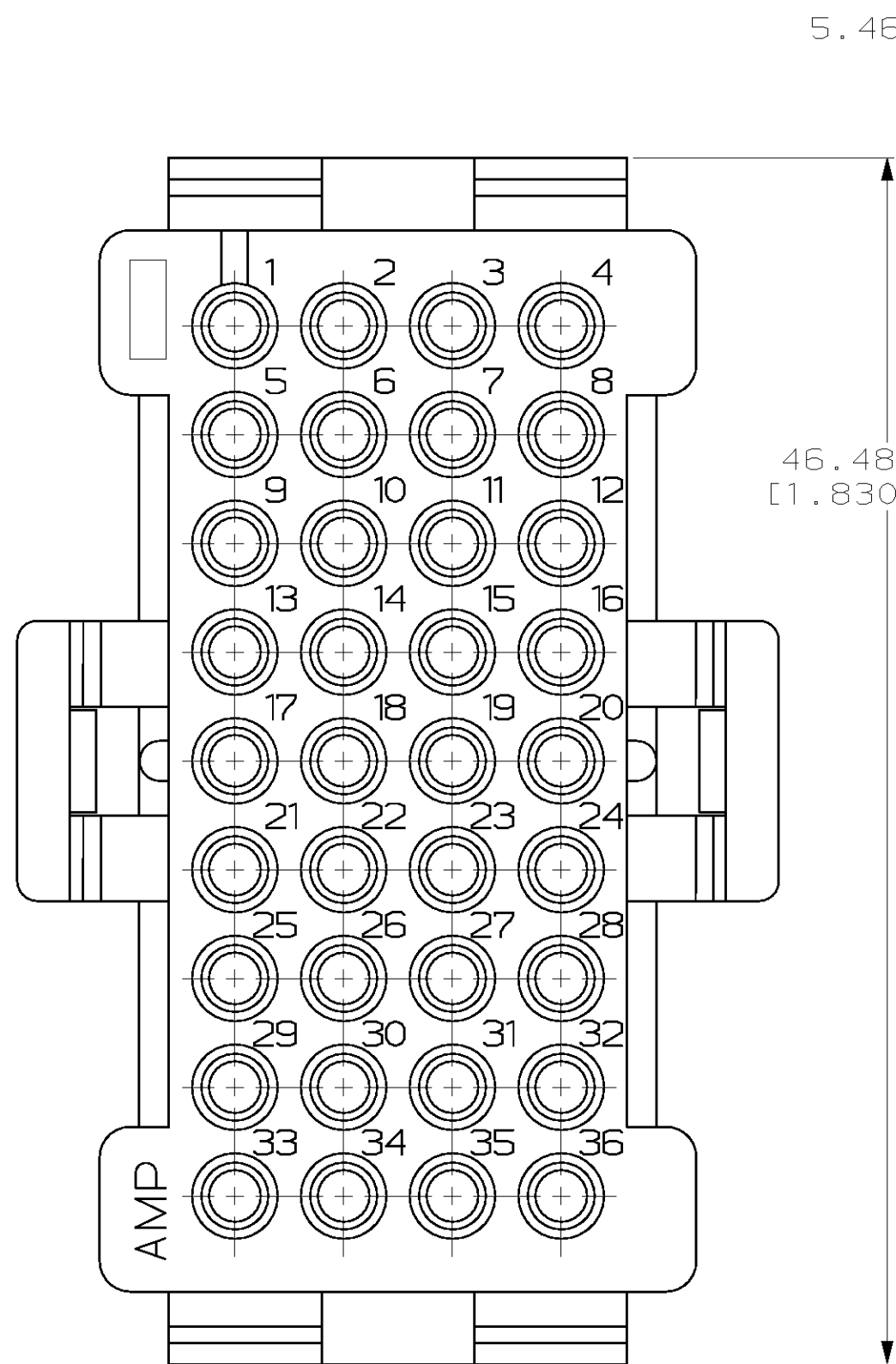
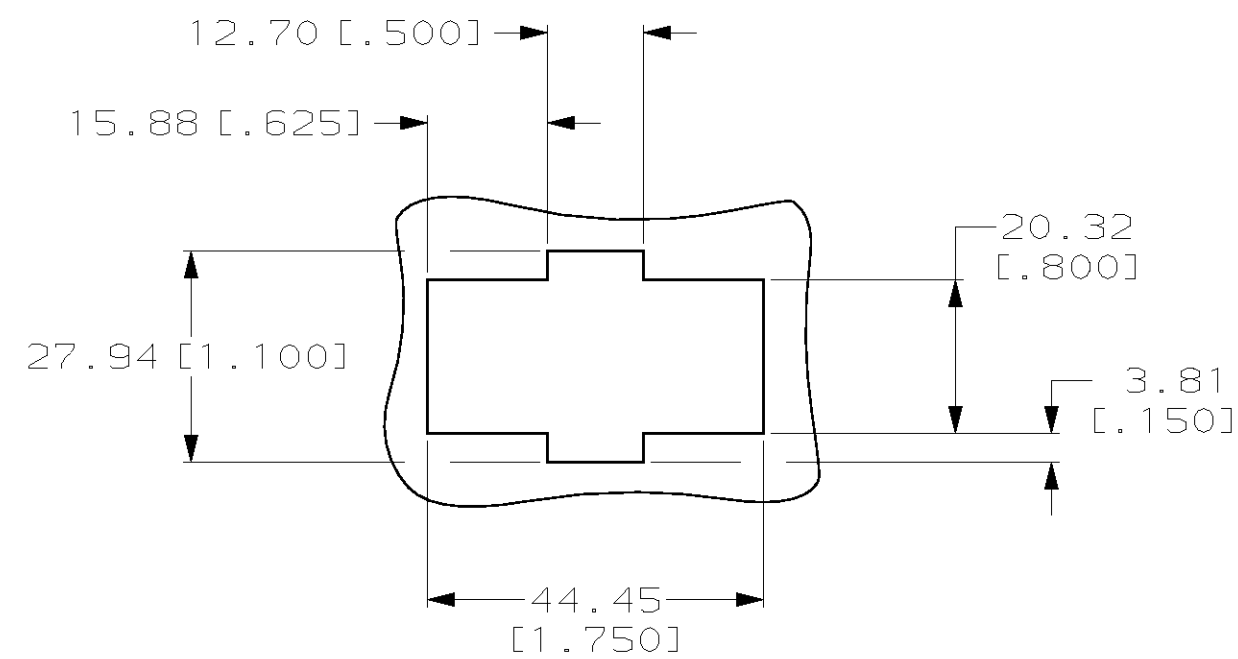
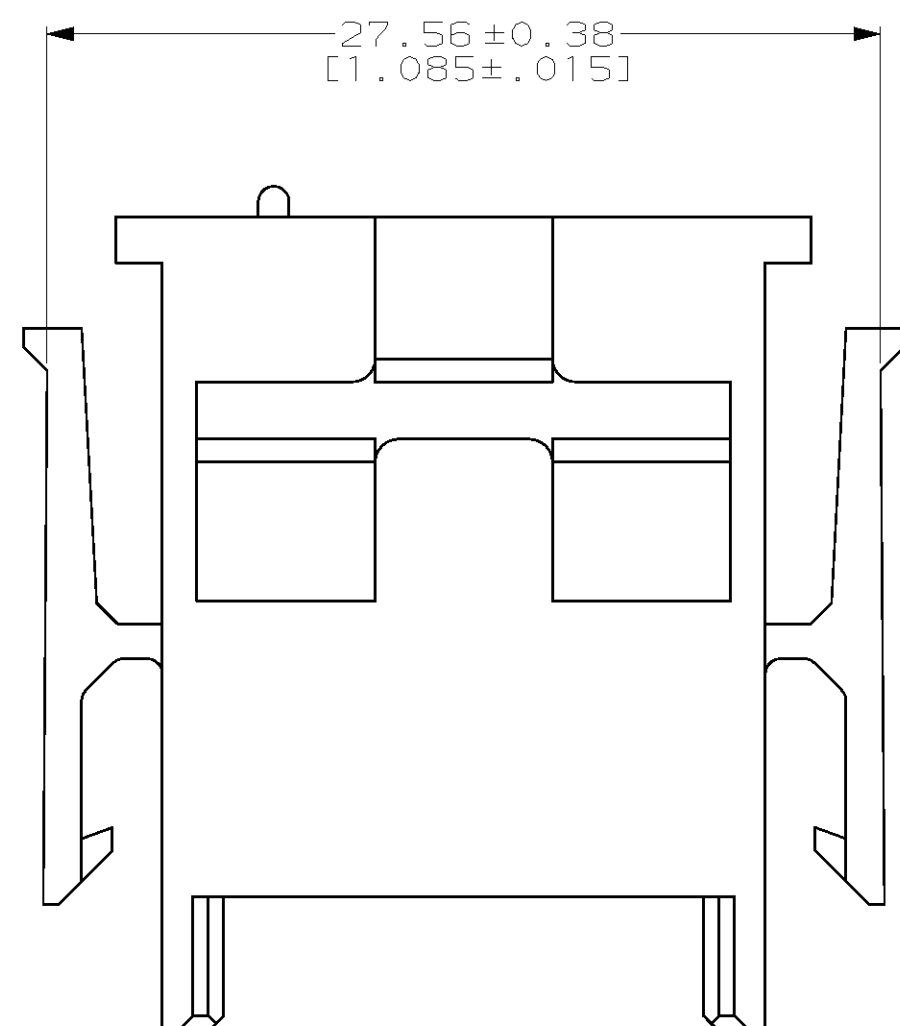


THIS DRAWING IS UNPUBLISHED. RELEASED FOR PUBLICATION .19
 (C) COPYRIGHT 19 BY AMP INCORPORATED. ALL RIGHTS RESERVED.

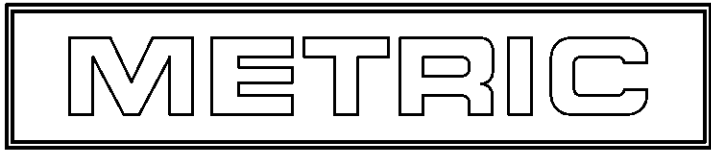
LOC	DIST	REVISIONS			
P	LTR	DESCRIPTION	DATE	DWN	APVD
CM	52				
D		REV PER EC 0L30-0015-97	2-21-97	JH	RS



- MATES WITH HOUSING 640526.
- UL LOGO AND CSA LOGO TO APPEAR ON EITHER LATCH SURFACE PER AMP SPEC 202-20, I.D. NO. 1-18838-3 AND 1-18839-3. FROST BACKGROUND OPTIONAL.
- DIMENSIONS IN BRACKETS ARE IN INCHES.



RECOMMENDED CUT OUT FOR 1.73 [.068] MAX THICK PANEL
 SCALE 1:1



1-640516-0
 PART NUMBER

THIS DRAWING IS A CONTROLLED DOCUMENT.		DWN R. VESTAL 7-12-96	AMP Incorporated Harrisburg, PA 17105-3608
DIMENSIONS: mm [INCHES]		CHK R. SWING 7-12-96	
TOLERANCES UNLESS OTHERWISE SPECIFIED:		APVD A. BEDDICK 7-12-96	NAME HOUSING, CAP MRII 36 POSITION
0 PLC ±-	1 PLC ±-	PRODUCT SPEC 114-1014	SIZE A2
2 PLC ±0.13 [.005]	3 PLC ±-	APPLICATION SPEC 108-1022	CAGE CODE 00779
4 PLC ±-	ANGLES ±0°30'	WEIGHT -	DRAWING NO C-640516
MATERIAL NYLON, UL 94V-0, NATURAL (BRICK RED)	FINISH -	CUSTOMER DRAWING	SCALE 4:1
		SHEET 1 OF 1	REV D

640516