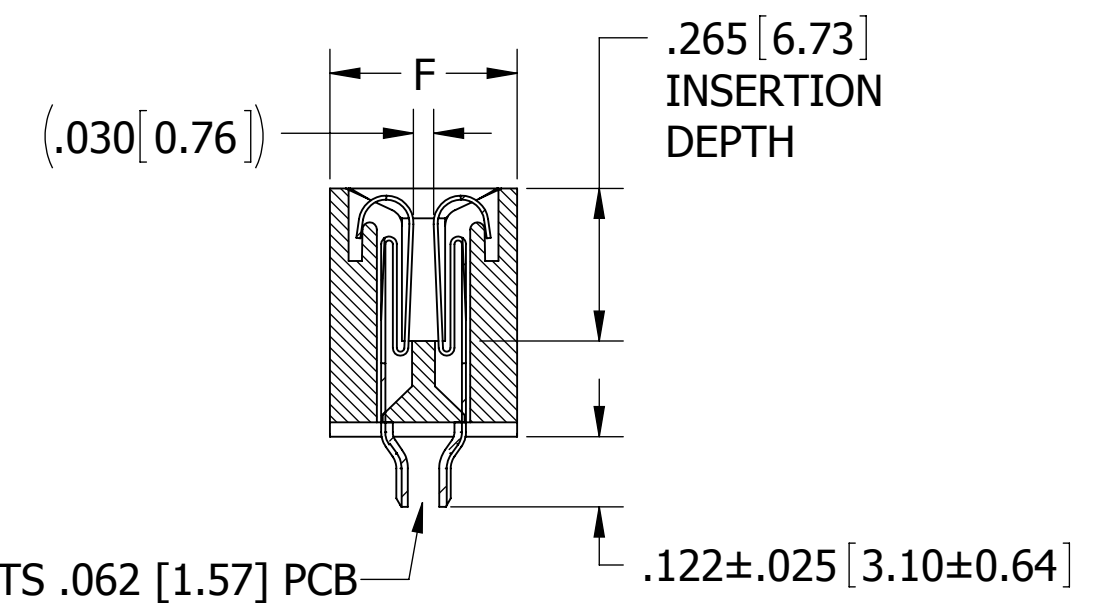
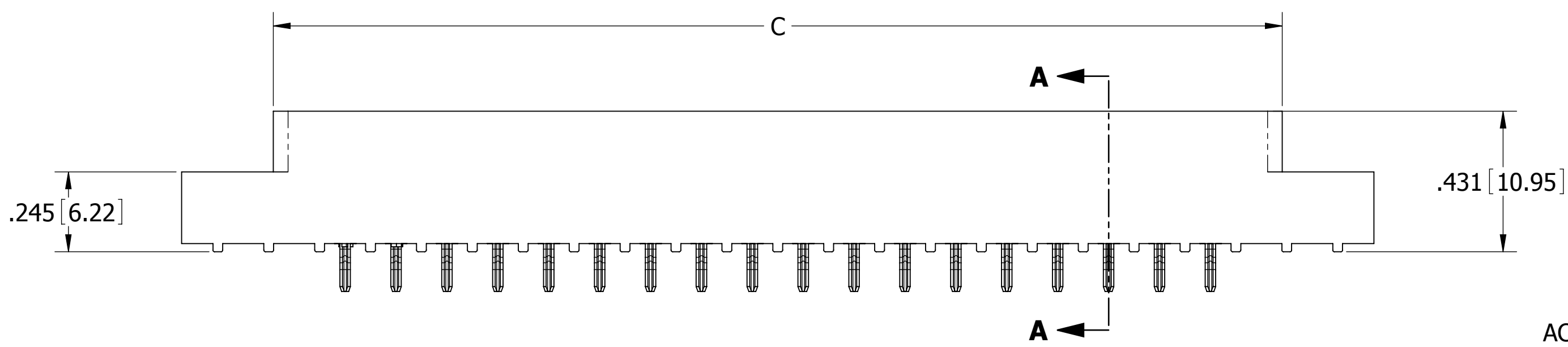
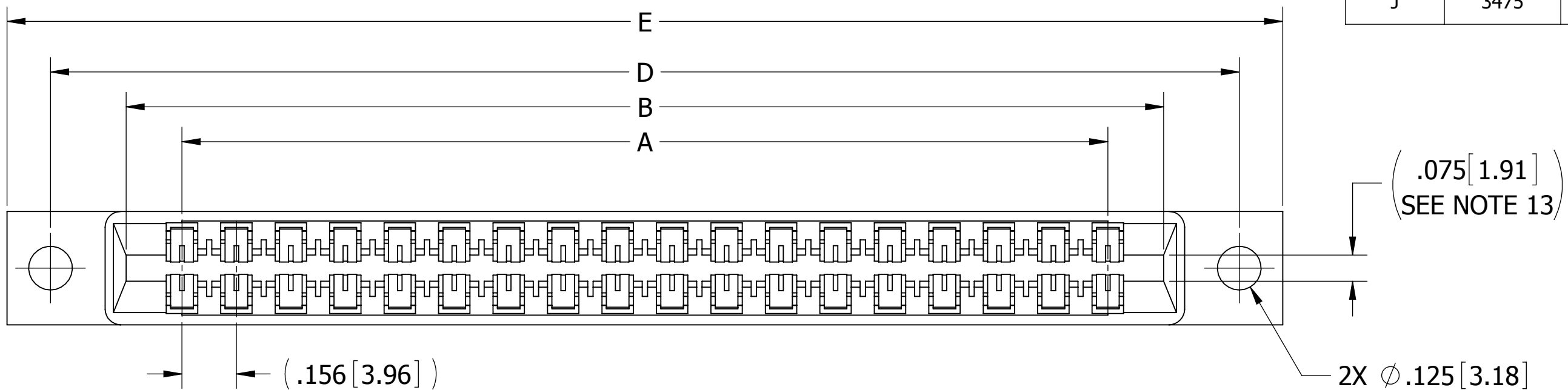
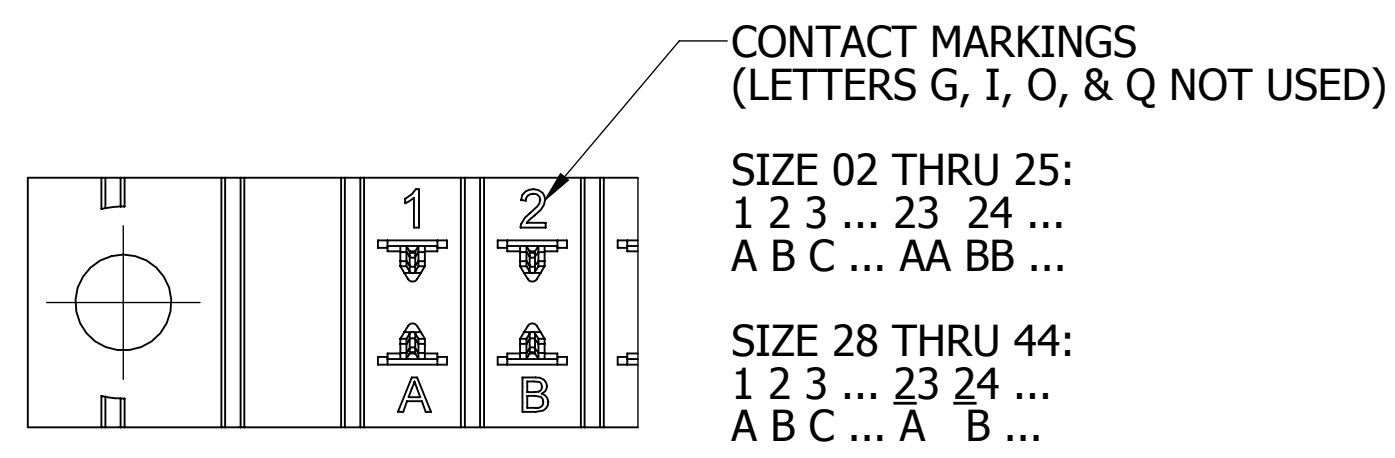


REVISIONS				
REV.	ECO. NO	DESCRIPTION	DATE	BY
A	750	INITIAL RELEASE	10/4/05	AN
B	836	ADJUSTEMENT OF PIN PROFILE	11/23/2005	HT
C	1261	UPDATED DRAWING TO GENERAL USE	1/25/2007	MV
D	1390	ADD CURRENT RATING TO F MATERIAL	6/18/2007	MNH
E	1662	UPDATE DRAWING FORMAT & PAT NUMBER CODING	4/21/2008	VJ
F	1772	UPDATE TO NEW FORMAT AND EDIT MATERIALS C AND W FORM COPPER TO NICKEL	7/30/2008	IA
H	2909	UPDATE DWG FORMAT, ASSY NOTES, DIMS, PART NUMBER CODING SPECS, & TABLE	2/4/2014	NC
J	3475	ADD S2142 OPTION	6/27/2016	EP



\_\_M\_\_DRTH-S13, S2142

- NOTES:**
- INSULATOR MATERIAL: SEE PART NUMBER CODING
  - CONTACT MATERIAL: SEE PART NUMBER CODING
  - PLATING: SEE PART NUMBER CODING
  - OPERATING TEMPERATURE: SEE PART NUMBER CODING
  - PROCESSING TEMP: SEE PART NUMBER CODING
  - UL FLAMMABILITY RATING: 94V-0
  - OPERATING VOLTAGE: 950 VAC
  - CURRENT RATING: 3 AMPS
  - CONTACT RESISTANCE: 30 MILLI OHMS MAX
  - INSULATION RESISTANCE: 5000 MEGA OHMS
  - DURABILITY: 500 CYCLES MINIMUM
  - CONNECTOR IDENTIFICATION: THE PART SHALL BE MARKED WITH A PART NUMBER AND LOT CODE
  - BOARD THICKNESS ACCOMMODATED:  $.062 \pm .008 [1.57 \pm 0.20]$
  - INSERTION FORCE: 16 OZ MAX PER CONTACT PAIR WHEN USING A  $.062 [1.57]$  TEST BLADE  
INTERNAL INSPECTION TO BE PER SULLIN'S WORK INSTRUCTION WI7.3-01
  - WITHDRAWAL FORCE: 1 OZ MIN PER CONTACT PAIR USING  $.062 [1.57]$  TEST BLADE
  - MODIFICATION: CARD EXTENDER BEND FOR  $.062 [1.57]$  PCB

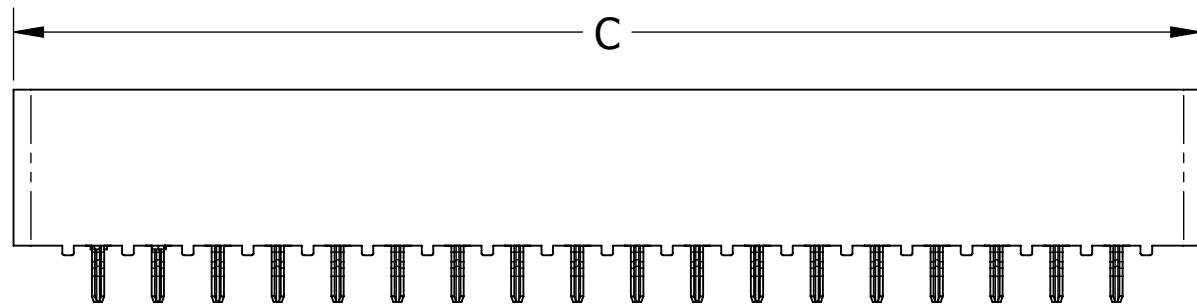
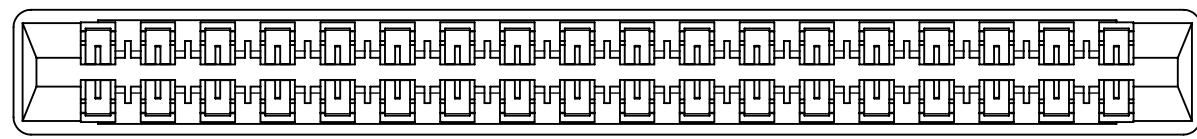


CONTACT ID  
SCALE 4:1



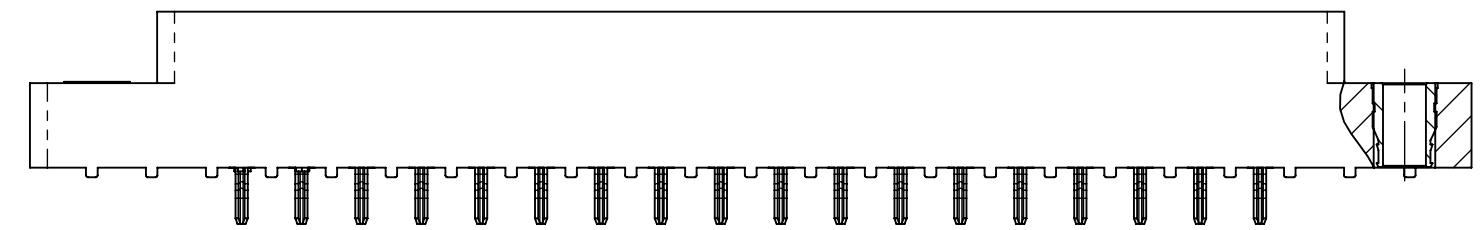
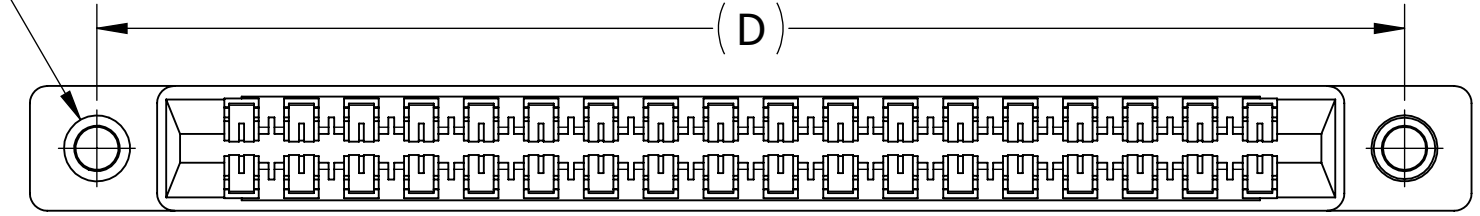
**CUSTOMER COPY**

UNLESS OTHERWISE SPECIFIED: DIMENSIONS ARE IN INCHES [MM]		DRAWN	DATE	NAME	
			10/4/2005	ARIA N.	
TOLERANCES: ANGULAR: $\pm 1^\circ$ DECIMALS .XX = $\pm .02 [ .5]$ .XXX = $\pm .005 [ .13]$ .XXXX = $\pm .0005 [ .013]$					<small>THE INFORMATION HEREIN CONTAINS PROPRIETARY INFORMATION OF SULLINS ELECTRONICS AND IS NOT TO BE REPRODUCED, USED OR DISCLOSED TO OTHERS FOR ANY PURPOSE EXCEPT AS SPECIFICALLY AUTHORIZED IN WRITING BY AN OFFICER OF SULLINS ELECTRONICS.</small>
					TITLE EDGE CARD, .156 CC, LP
					PART NUMBER __M__DRT_-(S13, S2149)
SIZE C	CAGE CODE 54453	DWG. NO. C10563	REV J		
SCALE: 3:1			SHEET 1 OF 3		

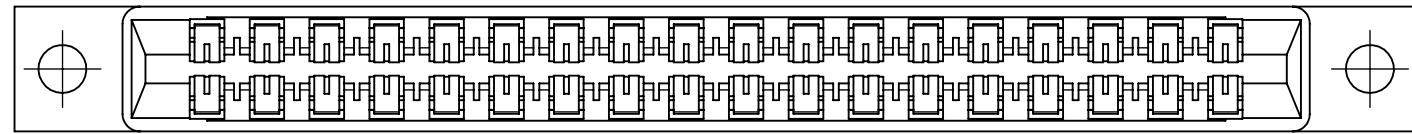


--M--DRTN-S13, S2142

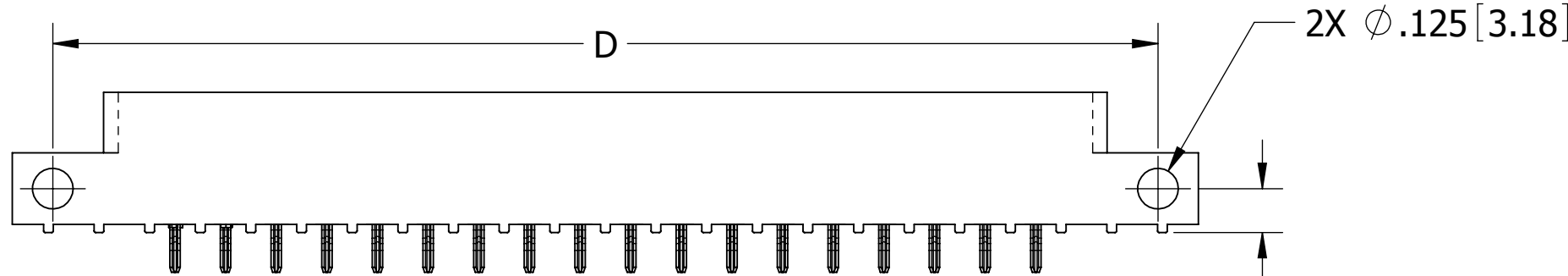
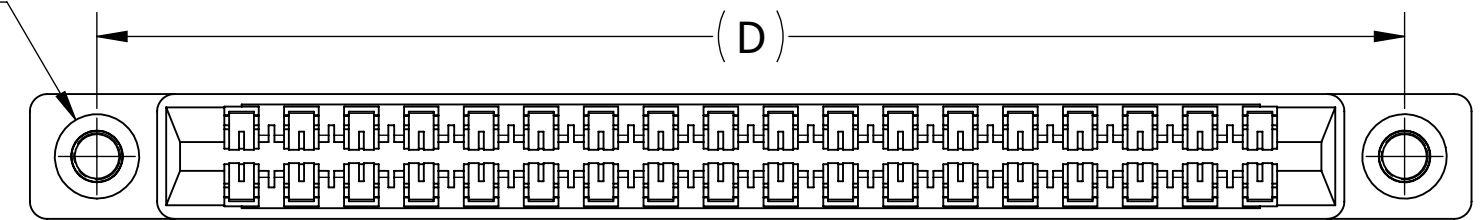
2X #4-40  
THREADED  
INSERT



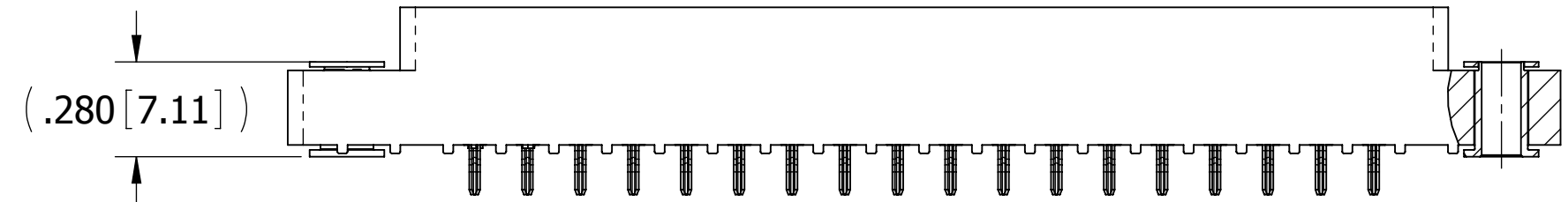
--M--DRTI-S13, S2142



2X FLOATING BOBBIN  
Ø .116 [2.95] CLEARANCE  
FOR # 4 SCREW

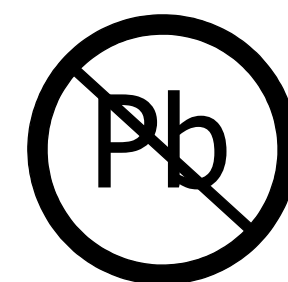


--M--DRTS-S13, S2142



--M--DRTF-S13, S2142

# CUSTOMER COPY



RoHS COMPLIANT

UNLESS OTHERWISE SPECIFIED:  
DIMENSIONS ARE IN INCHES [MM]

TOLERANCES:  
ANGULAR: ± 1°

DECIMALS  
.XX = ± .02 [.5]  
.XXX = ± .005 [.13]  
.XXXX = ± .0005 [.013]

DRAWN	DATE	NAME
	10/4/2005	ARIA N.
<small>THE INFORMATION HEREIN CONTAINS PROPRIETARY INFORMATION OF SULLINS ELECTRONICS AND IS NOT TO BE REPRODUCED, USED OR DISCLOSED TO OTHERS FOR ANY PURPOSE EXCEPT AS SPECIFICALLY AUTHORIZED IN WRITING BY AN OFFICER OF SULLINS ELECTRONICS.</small>		

<b>SULLINS</b> CONNECTOR SOLUTIONS		
TITLE EDGE CARD, .156 CC, LP		
PART NUMBER --M--DRT--(S13, S2149)		
SIZE C	CAGE CODE 54453	DWG. NO. C10563
SCALE: 2:1		SHEET 2 OF 3
REV J		

PART NUMBER	NO. OF POS.	A ± .008[0.20]		B ± .008[0.20]		C ± .015[0.38]		D ± .010[0.25]		E ± .020[0.51]		E ± .020[0.51]		F +.005/- .015 [+0.13/-0.38]			
		IN	MM	IN	MM	IN	MM	IN	MM	IN	MM	IN	MM	IN	MM		
M02DRTN-S	2	0.156	3.96	0.476	12.09	0.596	15.14	"N" MOUNTING								0.325	8.26
M03DRTN-S	3	0.312	7.92	0.632	16.05	0.752	19.10										
M04DRTN-S	4	0.468	11.89	0.788	20.02	0.908	23.06										
M06DRT -S	6	0.780	19.81	1.100	27.94	1.220	30.99	1.533	38.94	1.782	45.26	1.882	47.80	0.438	11.13		
M08DRT -S	8	1.092	27.74	1.412	35.86	1.532	38.91	1.845	46.86	2.094	53.19	2.194	55.73				
M10DRT -S	10	1.404	35.66	1.724	43.79	1.844	46.84	2.157	54.79	2.406	61.11	2.506	63.65				
M11DRT -S	11	1.560	39.62	1.880	47.75	2.000	50.80	2.313	58.75	2.562	65.07	2.662	67.61				
M12DRT -S	12	1.716	43.59	2.036	51.71	2.156	54.76	2.469	62.71	2.718	69.04	2.818	71.58				
M15DRT -S	15	2.184	55.47	2.504	63.60	2.624	66.65	2.937	74.60	3.186	80.92	3.286	83.46				
M18DRT -S	18	2.652	67.36	2.972	75.49	3.092	78.54	3.405	86.49	3.654	92.81	3.754	95.35				
M22DRT -S	22	3.276	83.21	3.596	91.34	3.716	94.39	4.029	102.34	4.278	108.66	4.378	111.20				
M24DRT -S	24	3.588	91.14	3.908	99.26	4.028	102.31	4.341	110.26	4.590	116.59	4.690	119.13				
M25DRT -S	25	3.744	95.10	4.064	103.23	4.184	106.27	4.497	114.22	4.746	120.55	4.846	123.09				
M28DRT -S	28	4.212	106.98	4.532	115.11	4.652	118.16	4.965	126.11	5.214	132.44	5.314	134.98				
M36DRT -S	36	5.460	138.68	5.780	146.81	5.900	149.86	6.213	157.81	6.462	164.13	6.562	166.67	0.500	12.70		
M43DRT -S	43	6.552	166.42	6.872	174.55	6.992	177.60	7.305	185.55	7.554	191.87	7.654	194.41				
M44DRT -S	44	6.708	170.38	7.028	178.51	7.148	181.56	7.461	189.51	7.710	195.83	7.810	198.37				

Only applies for connectors with threaded inserts or floats

**PART NUMBER CODING**

**M** **DRT** **-S**

**MATERIAL (INSULATOR/CONTACT)**

- E = BLUE PBT/PHOSPHOR BRONZE**  
OPERATING TEMP: -65°C TO +125°C  
PROCESSING TEMP: WAVE/MANUAL SOLDERING ONLY
- R = GREEN PPS/PHOSPHOR BRONZE**  
OPERATING TEMP: -65°C TO +125°C  
PROCESSING TEMP: 260°C MAX FOR 20 SECS
- G = BLACK PA9T/PHOSPHOR BRONZE**  
OPERATING TEMP: -65°C TO +125°C  
PROCESSING TEMP: 260°C MAX FOR 20 SECS
- H = BLUE PBT/BERYLLIUM COPPER**  
OPERATING TEMP: -65°C TO +125°C  
PROCESSING TEMP: WAVE/MANUAL SOLDERING ONLY
- A = GREEN PPS/BERYLLIUM COPPER**  
OPERATING TEMP: -65°C TO +150°C  
PROCESSING TEMP: 260°C MAX FOR 20 SECS
- J = BLACK PA9T/BERYLLIUM COPPER**  
OPERATING TEMP: -65°C TO +150°C  
PROCESSING TEMP: 260°C MAX FOR 20 SECS
- F = GREEN PPS/SPINODAL (CONSULT FACTORY)**  
OPERATING TEMP: -65°C TO +200°C  
(CONSULT FACTORY FOR SPECIAL SOLDERING REQUIREMENTS)  
AVAILABLE IN OVERALL GOLD ONLY (S OR M PLATING CODE)
- C = GREEN PPS/BERYLLIUM NICKEL (CONSULT FACTORY)**  
OPERATING TEMP: -65°C TO +200°C  
PROCESSING TEMP: 260°C MAX FOR 20 SECS  
AVAILABLE IN OVERALL GOLD ONLY (S OR M PLATING CODE)
- W = NATURAL BROWN PEEK/BERYLLIUM NICKEL (CONSULT FACTORY)**  
OPERATING TEMP: -65°C TO +250°C  
PROCESSING TEMP: 260°C MAX FOR 20 SECS  
AVAILABLE IN OVERALL GOLD ONLY (M PLATING CODE)

**MODIFICATION**  
S13: DEFAULT COLOR  
S2142: GREEN PBT (E, H MATERIAL CODE ONLY)

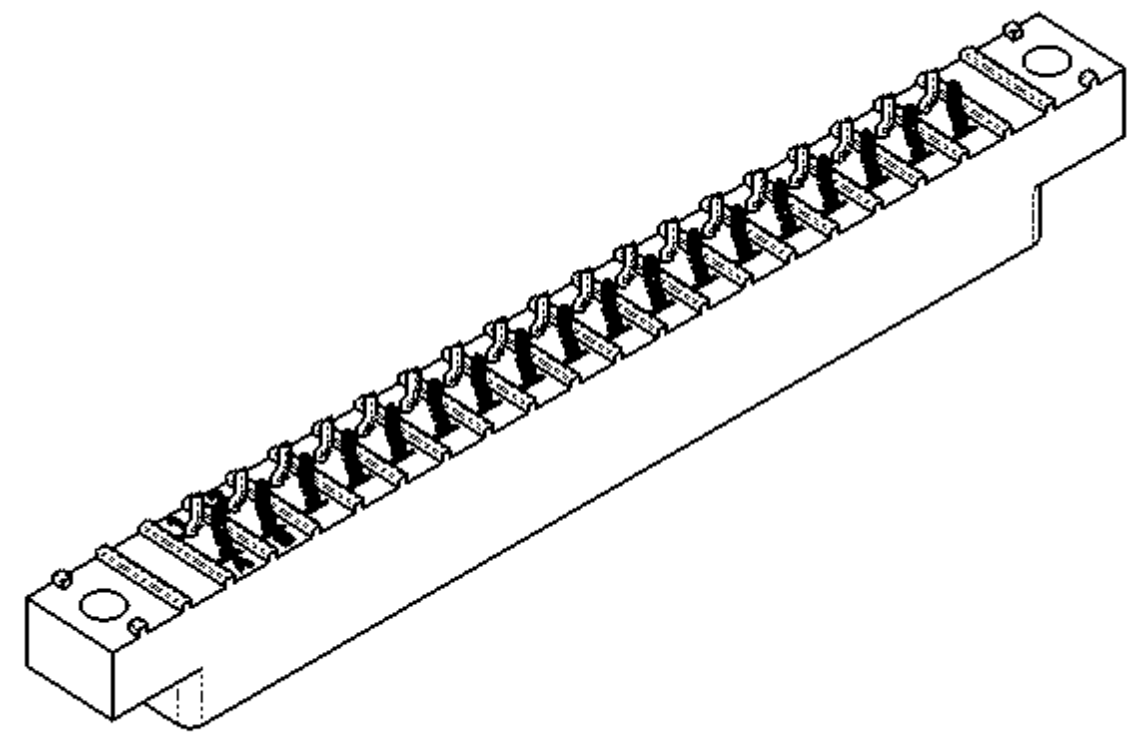
**MOUNTING STYLE**  
H = .125" DIA. CLEARANCE HOLES  
N = NO MOUNTING EARS  
S = .125" DIA. SIDE MOUNTING  
I = #4-40 THREADED INSERT  
F = FLOATING BOBBIN

**NUMBER OF POSITIONS (CONTACTS PER ROW)**

**PLATING**  
ALL PLATINGS ARE LEAD FREE AND HAVE .000050" NICKEL UNDERPLATE

CONTACT SURFACE	TERMINATION
G = .000010" GOLD	.000005" GOLD
Y = .000030" GOLD	.000005" GOLD
B = .000010" GOLD	.000100" PURE TIN, MATTE
C = .000030" GOLD	.000100" PURE TIN, MATTE
E = .000100" PURE TIN, MATTE	.000100" PURE TIN, MATTE, OVERALL
S = .000010" GOLD	.000010" GOLD OVERALL
M = .000030" GOLD	.000010" GOLD OVERALL

OVERALL TIN ONLY AVAILABLE IN MATERIAL CODES E, R AND G



**CUSTOMER COPY**



UNLESS OTHERWISE SPECIFIED: DIMENSIONS ARE IN INCHES [MM]		DRAWN	DATE	NAME	
			10/4/2005	ARIA N.	
TOLERANCES:					THE INFORMATION HEREIN CONTAINS PROPRIETARY INFORMATION OF SULLINS ELECTRONICS AND IS NOT TO BE REPRODUCED, USED OR DISCLOSED TO OTHERS FOR ANY PURPOSE EXCEPT AS SPECIFICALLY AUTHORIZED IN WRITING BY AN OFFICER OF SULLINS ELECTRONICS.
ANGULAR: ± 1°					
DECIMALS .XX = ± .02 [.5] .XXX = ± .005 [.13] .XXXX = ± .0005 [.013]					
TITLE		EDGE CARD, .156 CC, LP			
PART NUMBER		M DRT -S(S13, S2149)			
SIZE	CAGE CODE	DWG. NO.		REV	
C	54453	C10563		J	
SCALE: 2:1		SHEET 3 OF 3			