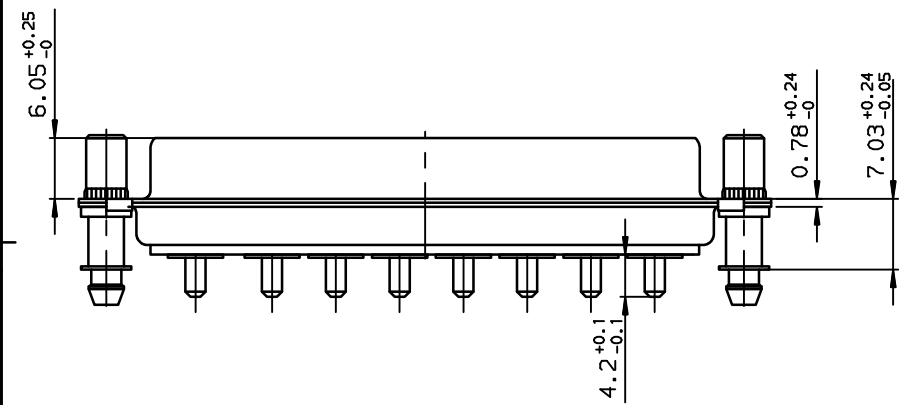
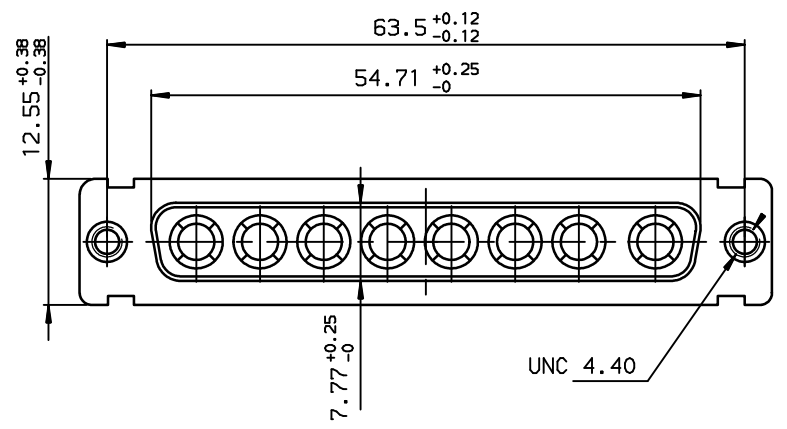
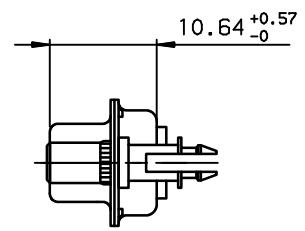
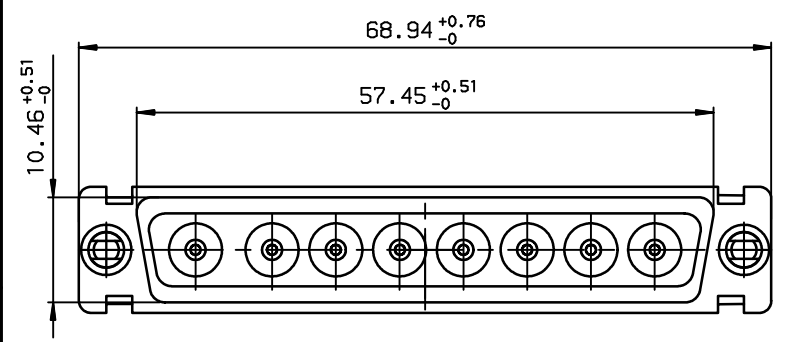
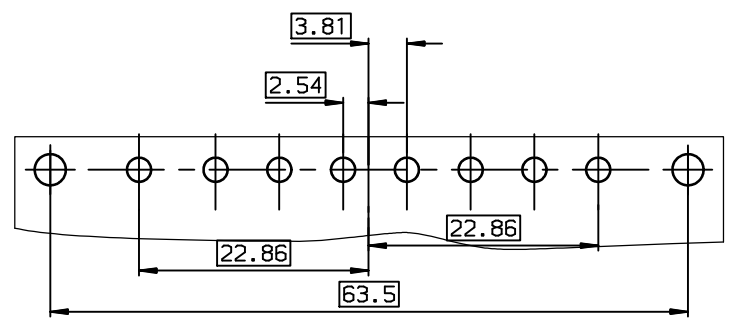


Copyright FCI. **FCI**



LAYOUT DIMENSIONS (after plating)  
CONNECTOR SIDE VIEW



TIN-LEAD PART NUMBER

DCV8W85343G30  
PART NUMBER

LEAD FREE PART NUMBER

DCV8W85343G30LF  
PART NUMBER

GENERAL CHARACTERISTICS AND ROHS INFORMATIONS:  
SEE DRAWING C01-8639-0001

European Views

www.fciconnect.com		surface ISO 1302 ✓	tolerance std ISO 406 ISO 1101	projection mm
		TOLERANCES UNLESS OTHERWISE SPECIFIED		size A3
Dr	JARRY	1997/02/18	0.X ±0.1	Scale 2
Eng	PESSON	1997/02/18	0.XX ±0.1	ECN LS06-0095
Chr	LEGARE	1997/02/18	0.XXX ±0.1	Spec ref -
Appr	LEGARE	1997/02/18	Product family	D-SUB
<b>FCI</b>		title PIN CONNECTOR WITH POWERS CONTACTS		Rev. D
catalog no		-		01-1506 CUSTOMER sheet 1 of 1

rev	ecn no	dr	date
B	-	DEB	2003/10/21
C	LS05-001	MPE	2005/03/07
D	LS06-0095	LGO	2006/07/20
-	-	-	-
-	-	-	-
-	-	-	-
-	-	-	-

REV F - 2006-04-17