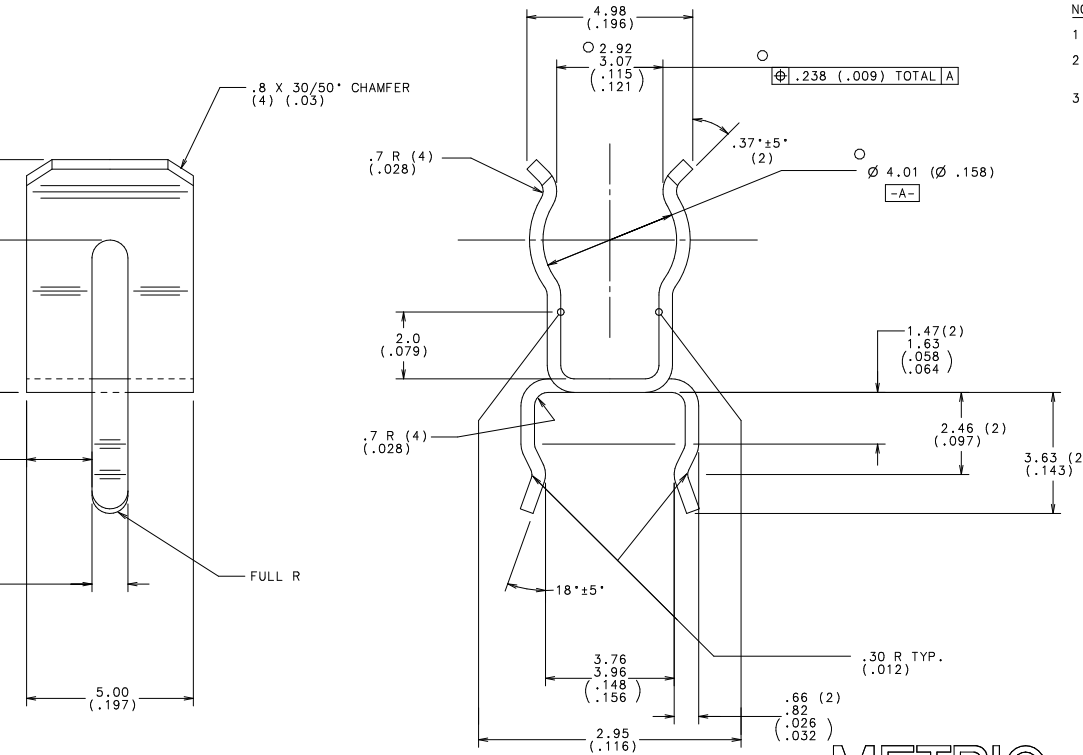


SUGGESTED MOUNTING HOLE PATTERN
FOR 4.5 X 15mm FUSE (2AG)
SCALE = 4:1



NOTES:

1. DECIMAL EQUIVALENT = (.XXX)
2. TOOLING MUST ALSO BE CAPABLE OF PRODUCING PART No. 01110501Z.
3. HEAT TREAT 600°F FOR 2 HOURS.

NO	COMPONENT NO	DESCRIPTION	QTY/M	U/M
2	010113	HIGH PURITY TIN	.015	LB
1	046184	BeCu .41(.016) THICK	.858	LB

BILL OF MATERIAL

UNLESS OTHERWISE SPECIFIED, DIMENSIONS DO NOT INCLUDE PLATING.				
O	DENOTES CRITICAL CHARACTERISTICS.			
CPK	DENOTES CPK DIMENSIONS, -MINIMUM CPK VALUE			
(ST)	DENOTES A CHARACTERISTIC THAT PROVIDES AN INDICATION OF PROCESS PERFORMANCE, PROCEDURE FOR MEASUREMENT AND TRACKING TO BE DEFINED IN LITTELFUSE INSPECTION INSTRUCTIONS.			
CP	DENOTES CP DIMENSIONS, -MINIMUM CP VALUE MUST BE WITHIN THE DIMENSIONAL LIMITATIONS SHOWN ON DRAWING AND INITIALLY LOCATED TO ALLOW FOR MAXIMUM TOOL LIFE.			
MATERIAL SPEC				
COPIES TO				
1	9	18		
2	10	19	FINISH	TIN PLATE (0001) .0005 PER L / SRB E8-001002-B
3	12	20	DRW	PJM DATE 05/26/00 SCALE 10:1
5	14	23	CHK	DATE SUPER DR
6	15	33	TPPS	DATE
7	16	43	DATE	RAB STR WT LBS/M
8	17	53	DATE	
TOLERANCE UNLESS OTHERWISE SPECIFIED FRACTION ± ANGULAR ±				
TWO PLACE DEC ± .25				
THREE PLACE DEC ± .10				
TITLE 2 XG 05 X 20mm P.C. MOUNT FUSE CLIP W/OUT EARS				