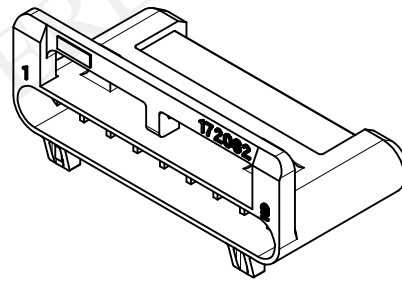
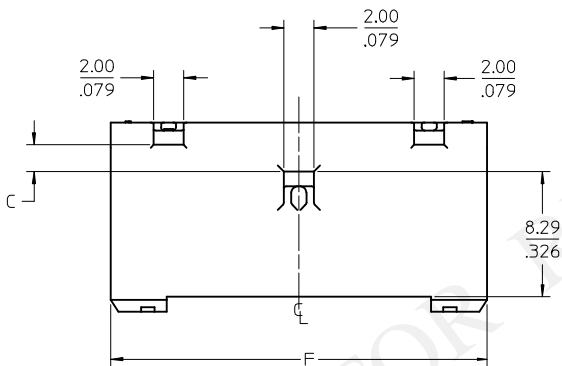
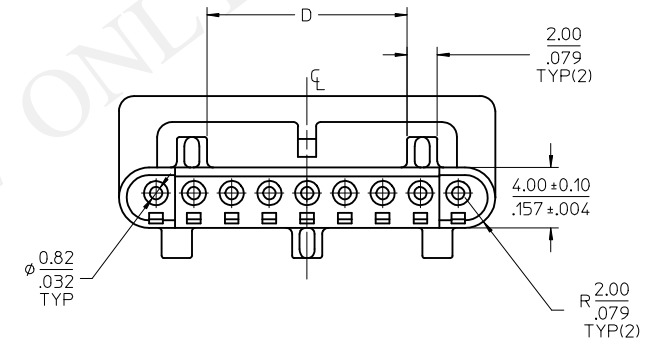
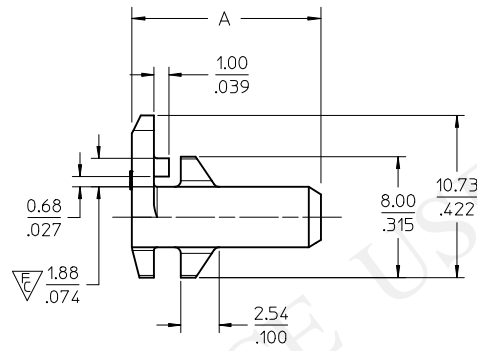
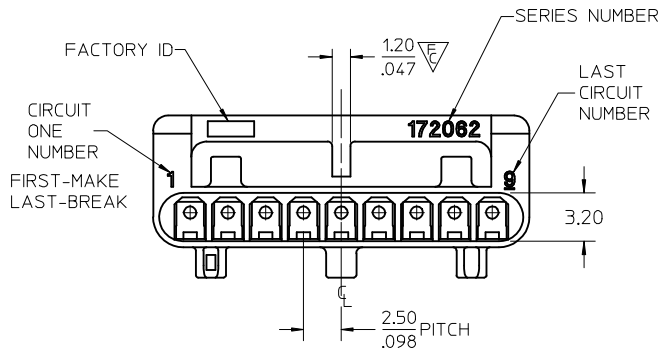


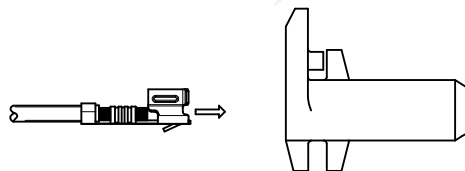
172062-1109	9	1	12.53 / .493	1.78 / .070	13.25 / .522	15.25 / .600	24.90 / .980	23.60 / .929	1.35 / .053
172062-1009	9	0	12.53 / .493	1.78 / .070	13.25 / .522	15.25 / .600	24.90 / .980	23.60 / .929	1.35 / .053
172062-1108	8	1	12.53 / .493	1.78 / .070	10.75 / .423	12.75 / .502	22.40 / .882	21.10 / .831	1.35 / .053
172062-1008	8	0	12.53 / .493	1.78 / .070	10.75 / .423	12.75 / .502	22.40 / .882	21.10 / .831	1.35 / .053
172062-1107	7	1	12.53 / .493	1.78 / .070	8.25 / .325	10.25 / .404	19.90 / .783	18.60 / .732	1.35 / .053
172062-1007	7	0	12.53 / .493	1.78 / .070	8.25 / .325	10.25 / .404	19.90 / .783	18.60 / .732	1.35 / .053
172062-1106	6	1	12.00 / .472	1.25 / .049	5.75 / .226	7.75 / .305	17.40 / .685	16.10 / .634	1.35 / .053
172062-1006	6	0	12.00 / .472	1.25 / .049	5.75 / .226	7.75 / .305	17.40 / .685	16.10 / .634	1.35 / .053
MATL NO*	CKT	MATL	A	C ±0.13/±.005	D	E	F	G	PANEL THICKNESS

9 CKT SHOWN  
SEE CHART FOR OTHER CKT SIZES

\*PN LEGEND: 172062-1XYZ  
X = MATL (SEE NOTE 1)  
YZ = CIRCUIT SIZE

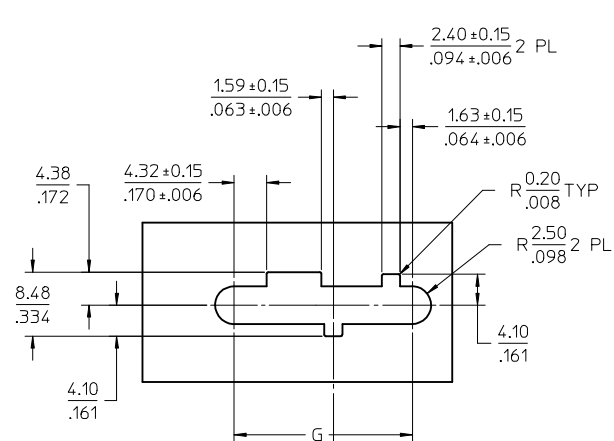


- NOTES:
- MATERIAL:
    - 0 = NYLON, UL94V-0, LOW HALOGEN, COLOR: BLACK.
    - 1 = NYLON, UL94V-2, GLOW-WIRE CAPABLE, COLOR: BLACK.
  - FINISH: N/A
  - PRODUCT SPECIFICATION: PS-46626-001 (PENDING).
  - PACKAGING: TBD PCS PER SHIPPING CARTON
  - MATES WITH: 46831 PLUG HOUSING.
  - FOR USE WITH 46626 FEMALE CRIMP TERMINALS
  - THIS PART CONFORMS TO CLASS B REQUIREMENTS OF COSMETIC SPEC PS-45499-002.
  - SEE PAGE 2 OF 2 FOR PANEL CUTOUT DIMENSIONS AND THE ALLOWED PANEL TO PANEL MISALIGNMENT.
  - USE MOLEX EXTRACTION TOOL 63813-1400 TO REMOVE TERMINAL WITHOUT DAMAGING THE HOUSING. RELOAD HOUSING WITH NEW TERMINAL ONLY. EXTRACTED TERMINALS ARE NOT REUSABLE.

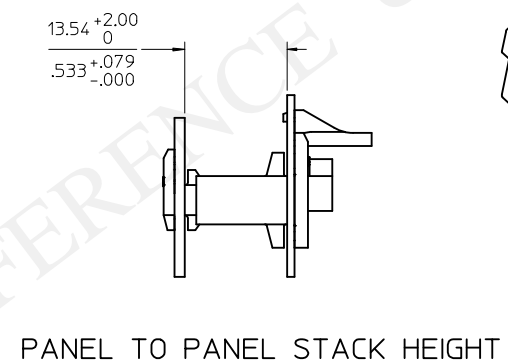
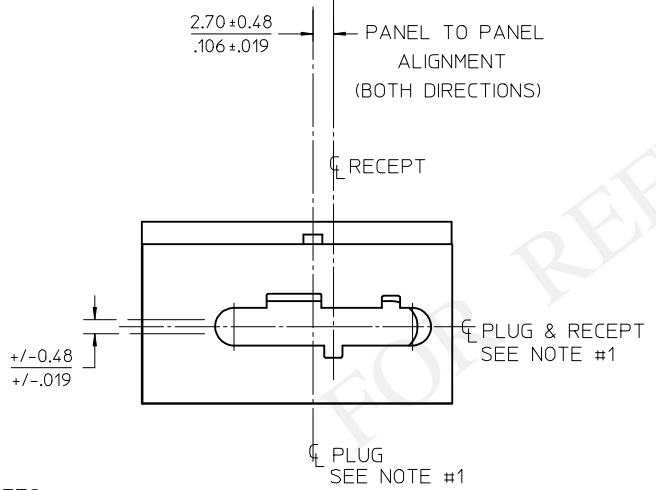
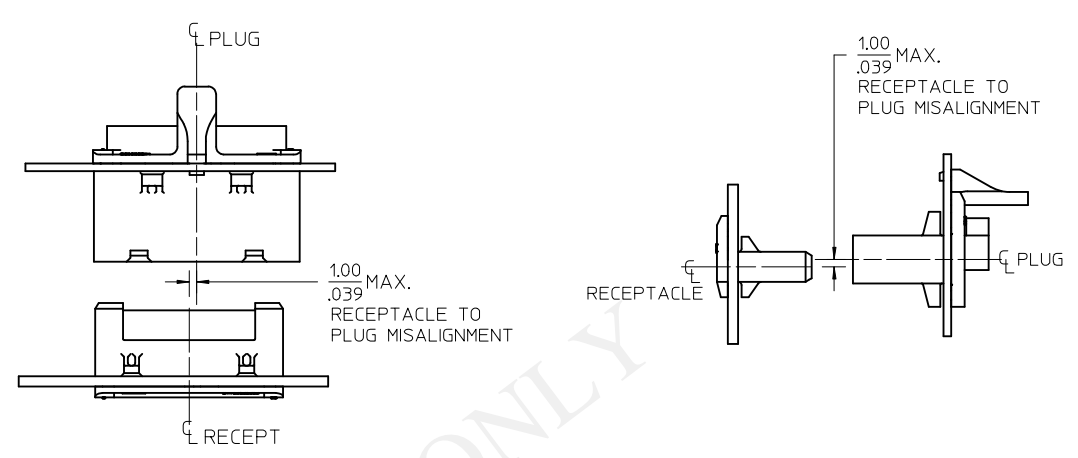


TERMINALS ARE TO BE ORIENTED AND LOADED INTO THE HOUSING AS SHOWN ABOVE

CREATE DRAWING EC NO: UCP2014-0988 DRAWING: NGUYEN 2013/09/03 CHKD: BANDERSON 2013/09/03 APPR: NGUYEN 2013/09/11	QUALITY SYMBOLS	GENERAL TOLERANCES (UNLESS SPECIFIED)	DIMENSION STYLE	SCALE	DESIGN UNITS	THIRD ANGLE PROJECTION
	▽=0	mm INCH	MM/IN	4:1	METRIC	
	▽=3	4 PLACES ± --- ± ---	DRAWN BY DATE	TITLE		
	▽=0	3 PLACES ± --- ± .010	NGUYEN 2013/09/03	SAAVIK SINGLE ROW RECEPTACLE HOUSING		
		2 PLACES ± 0.25 ± .014	CHECKED BY DATE			
		1 PLACE ± 0.35 ± ---	BANDERSON 2013/09/03			
		0 PLACE ± ±	APPROVED BY DATE			
			NGUYEN 2013/09/11			
		ANGULAR ± 2 °	MATERIAL NO.	DOCUMENT NO.		
		DRAFT WHERE APPLICABLE MUST REMAIN WITHIN DIMENSIONS	SEE CHART	SD-172062-100		
			SIZE C	THIS DRAWING CONTAINS INFORMATION THAT IS PROPRIETARY TO MOLEX INCORPORATED AND SHOULD NOT BE USED WITHOUT WRITTEN PERMISSION		SHEET NO. 1 OF 2



PANEL CUTOUT  
WIRE ENTRY SIDE VIEW  
PANEL THICKNESS: SEE CHART

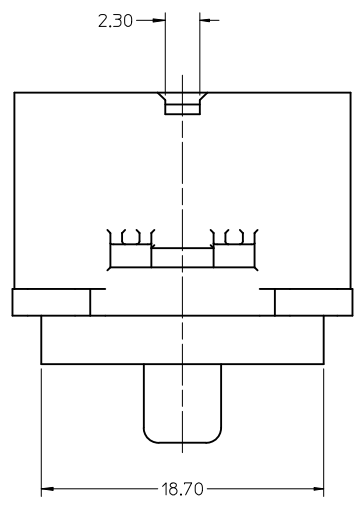
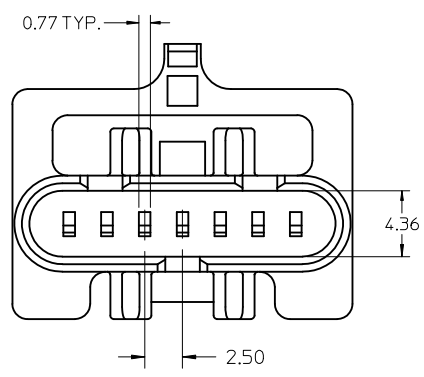
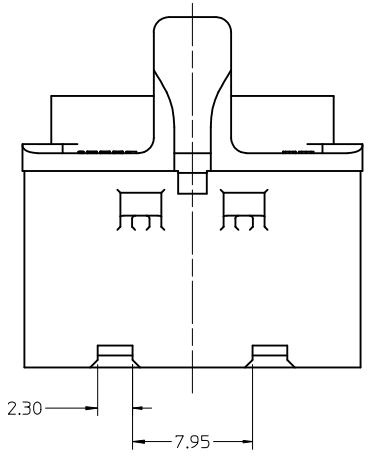


PANEL TO PANEL STACK HEIGHT

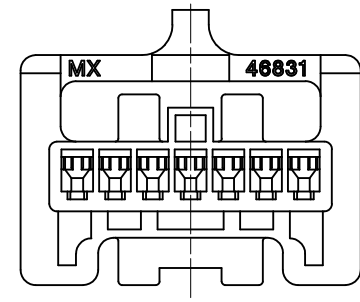
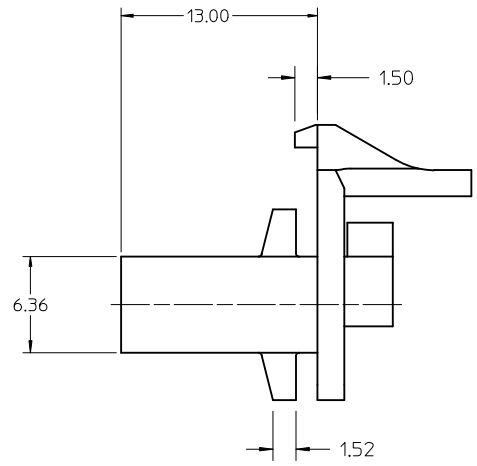
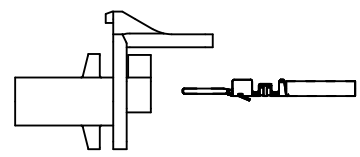
- NOTES:
- TO ALIGN 46831 PANEL CUTOUT WITH 172062 PANEL CUTOUT: ALIGN HORIZONTAL CENTERLINES AND KEEP 2.70MM BETWEEN VERTICAL CENTERLINES OF THE PANEL CUTOUT IN THE DRAWING SD-46831-\*
  - TERMINALS MUST BE ALLOWED TO FLOAT FREELY WITHIN EACH CORE DO NOT TIE WIRES TOGETHER TIGHTLY, ALLOW WIRE TO MOVE.

SEE SHEET 1 EC NO: UCP2014-0988 DRAWING: NGUYEN 2013/09/03 CHKD: BANDERSON 2013/09/03 APPR: NGUYEN 2013/09/11	QUALITY SYMBOLS ∇=0 ∇=0 ∇=0	GENERAL TOLERANCES (UNLESS SPECIFIED)		DIMENSION STYLE MM/IN		SCALE 2:1	DESIGN UNITS METRIC	THIRD ANGLE PROJECTION			
		4 PLACES ± --- ± ---	3 PLACES ± --- ± .010	2 PLACES ± 0.25 ± .014	1 PLACE ± 0.35 ± ---	0 PLACE ± ±	DRAWN BY NGUYEN	DATE 2013/09/03	TITLE SAAVIK SINGLE ROW RECEPTACLE HOUSING		
		ANGULAR ± 2 °					CHECKED BY BANDERSON	DATE 2013/09/03	APPROVED BY NGUYEN		
		DRAFT WHERE APPLICABLE MUST REMAIN WITHIN DIMENSIONS					MATERIAL NO. SEE SHEET 1	DATE 2013/09/11	DOCUMENT NO. SD-172062-100		SHEET NO. 2 OF 2

THIS DRAWING CONTAINS INFORMATION THAT IS PROPRIETARY TO MOLEX INCORPORATED AND SHOULD NOT BE USED WITHOUT WRITTEN PERMISSION

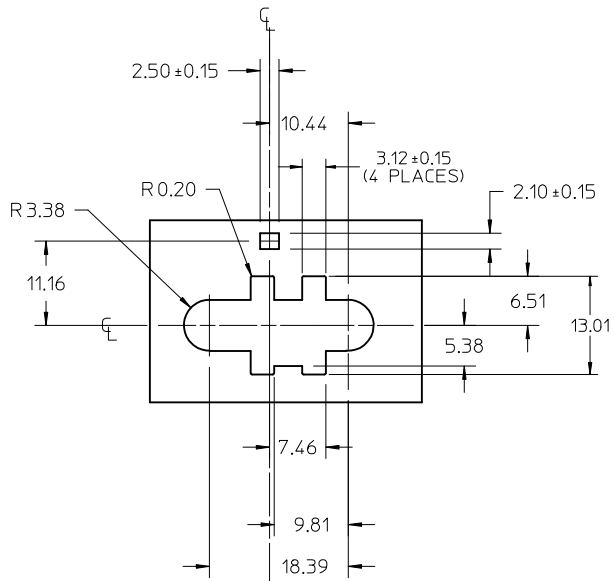


TERMINALS TO BE ORIENTED AND LOADED INTO THE HOUSING AS SHOWN BELOW

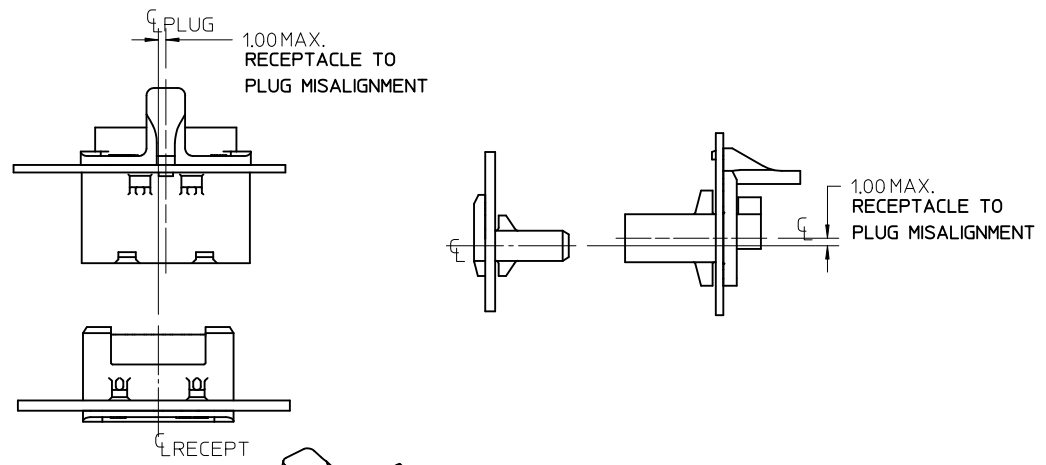


- NOTES:
1. MATERIAL: HALOGEN-FREE PBT. COLOR: BLACK.
  2. PRODUCT CONFORMS TO PRODUCT SPECIFICATION PS-45579-001.
  3. USES MALE CRIMP TERMINALS SERIES 45627.
  4. PART MATES WITH MOLEX RECEPTACLE 46528-0007.
  5. PACKAGING: 2,500 PCS PER MOLEX SHIPPING CARTON 96707-0007.
  6. SEE PAGE 2 OF 2 FOR PANEL CUTOUT DIMENSIONS AND THE ALLOWED PANEL TO PANEL MISALIGNMENT.
  7. USE MOLEX EXTRACTION TOOL 63813-1400 TO REMOVE TERMINAL WITHOUT DAMAGING THE PLUG CORE. RELOAD PLUG CORE WITH NEW TERMINAL ONLY. REMOVED TERMINAL AFTER EXTRACTION IS NOT USABLE.

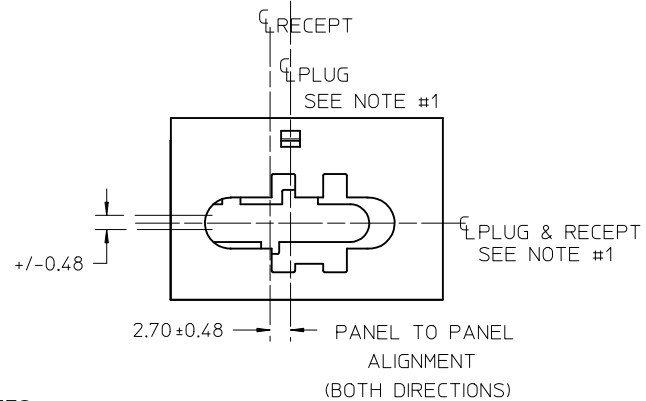
CORRECTED PS NUMBER EC NO: UCP2011-1191 DRWN: DROSCA 2010/10/29 CHKD: APPR: JCOMERCI 2010/10/29	QUALITY SYMBOLS ▽ 0 ▽ 0	GENERAL TOLERANCES (UNLESS SPECIFIED)		SCALE 4:1	DESIGN UNITS METRIC	THIRD ANGLE PROJECTION	REVISE ON CAD ONLY		
			mm	INCH	DIMENSION STYLE MM ONLY		TITLE SPOX BMI 1X7 PLUG HOUSING		
		4 PLACES	± ---	± ---	DRAWN BY DROSCA	DATE 2010/03/29	MOLEX INCORPORATED		
		3 PLACES	± ---	± ---	CHECKED BY JCOMERCI	DATE 2010/03/29			
2 PLACES	± 0.13	± ---	DRAFT WHERE APPLICABLE MUST REMAIN WITHIN DIMENSIONS		APPROVED BY JCOMERCI	DATE 2010/10/29	MATERIAL NO. 468310002	DOCUMENT NO. SD-46831-002	SHEET NO. 1 OF 2
1 PLACE	± 0.25	± ---	ANGULAR ±1/2°		THIS DRAWING CONTAINS INFORMATION THAT IS PROPRIETARY TO MOLEX INCORPORATED AND SHOULD NOT BE USED WITHOUT WRITTEN PERMISSION				



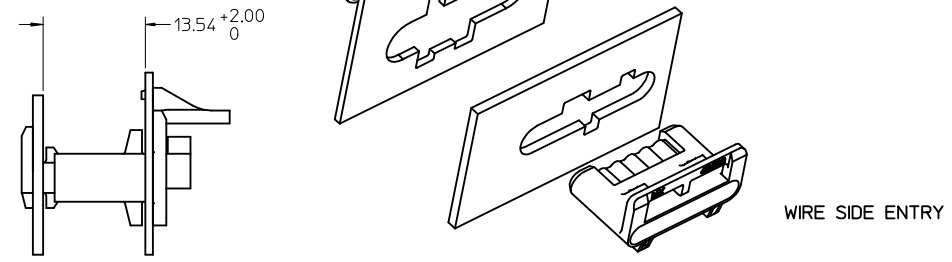
PANEL CUTOUT  
WIRE ENTRY SIDE VIEW  
PANEL THICKNESS 1.00mm +/-0.15



WIRE SIDE ENTRY



PANEL TO PANEL STACK HEIGHT

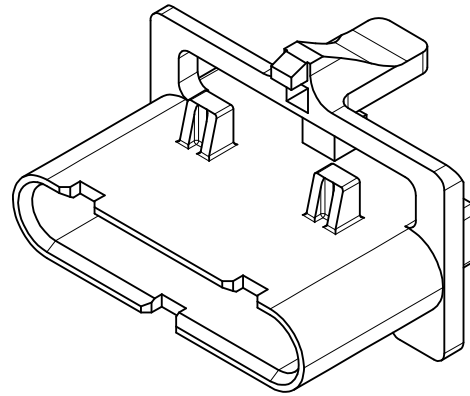
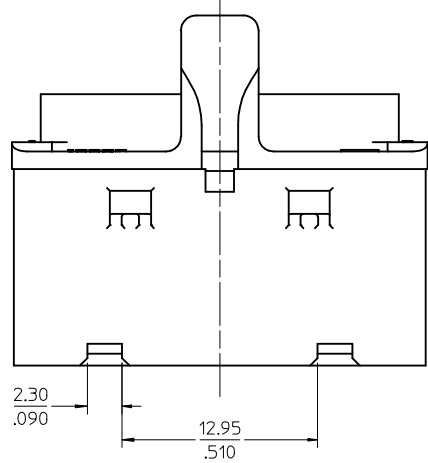


WIRE SIDE ENTRY

NOTES:

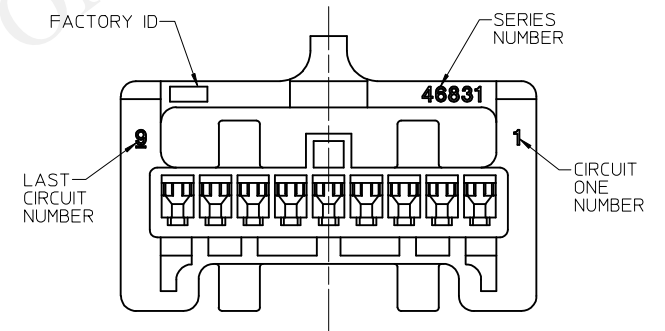
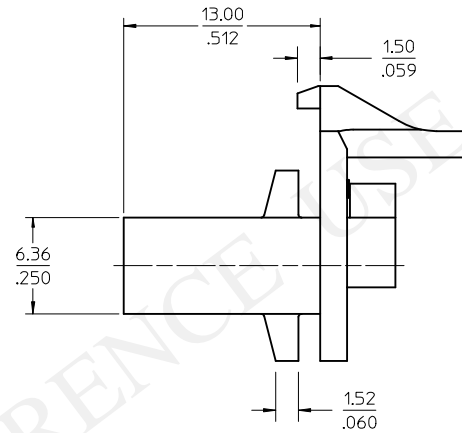
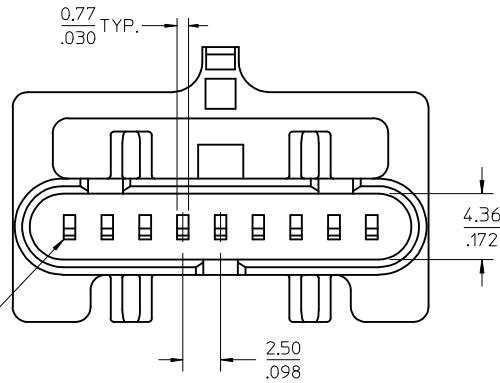
1. TO ALIGN 46831 PANEL CUTOUT WITH 46528 PANEL CUTOUT, ALIGN HORIZONTAL CENTERLINES AND KEEP 2.70MM BETWEEN VERTICAL CENTERLINES OF THE PANEL CUTOUT IN THE DRAWING SD-46528-077.
2. TERMINALS MUST BE ALLOWED TO FLOAT FREELY WITHIN EACH CORE DO NOT TIE WIRES TOGETHER TIGHTLY, ALLOW WIRE TO MOVE.

EC NO: UCP2011-1191 DRWN: DROSCA 2010/10/29 CHKD: APPR: JCOMERCI 2010/10/29	QUALITY SYMBOLS ▽ 0 ∇ 0	GENERAL TOLERANCES (UNLESS SPECIFIED)		SCALE 2:1	DESIGN UNITS METRIC	THIRD ANGLE PROJECTION	REVISE ON CAD ONLY	
		4 PLACES ± --- ± ---	3 PLACES ± --- ± ---	DIMENSION STYLE MM ONLY		TITLE SPOX BMI 1X7 PLUG HOUSING		
		2 PLACES ± 0.13 ± ---	1 PLACE ± 0.25 ± ---	DRAWN BY DROSCA	DATE 2010/03/29	MOLEX INCORPORATED		
		ANGULAR ± 1/2°		CHECKED BY JCOMERCI	DATE 2010/03/29	MATERIAL NO. SEE PAGE 1		
A	REV	DRAFT WHERE APPLICABLE MUST REMAIN WITHIN DIMENSIONS		APPROVED BY JCOMERCI	DATE 2010/10/29	DOCUMENT NO. SD-46831-002	SHEET NO. 2 OF 2	

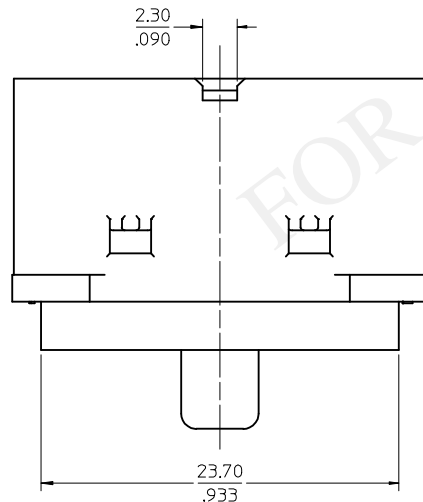
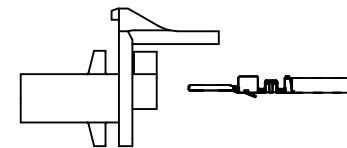


NOTES:

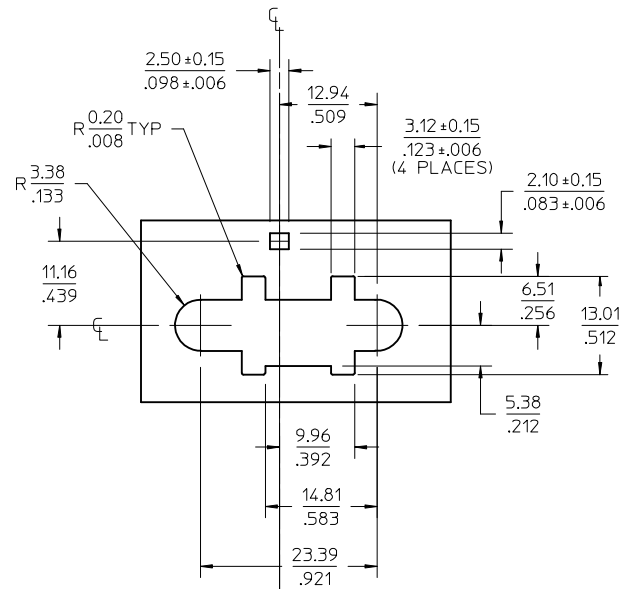
1. MATERIAL: NYLON, UL94V-0, LOW HALOGEN, COLOR: BLACK.
2. FINISH: N/A
3. PRODUCT SPECIFICATION: PS-45579-001.
4. PACKAGING: TBD PCS PER SHIPPING CARTON
5. MATES WITH: 172062-1\*09 RECEPTACLE HOUSING.
6. FOR USE WITH 45627 MALE CRIMP TERMINALS
7. THIS PART CONFORMS TO CLASS B REQUIREMENTS OF COSMETIC SPEC PS-45499-002.
8. SEE PAGE 2 OF 2 FOR PANEL CUTOUT DIMENSIONS AND THE ALLOWED PANEL TO PANEL MISALIGNMENT.
9. USE MOLEX EXTRACTION TOOL 63813-1400 TO REMOVE TERMINAL WITHOUT DAMAGING THE HOUSING. RELOAD HOUSING WITH NEW TERMINAL ONLY. EXTRACTED TERMINALS ARE NOT REUSABLE.



TERMINALS TO BE ORIENTED AND LOADED INTO THE HOUSING AS SHOWN BELOW

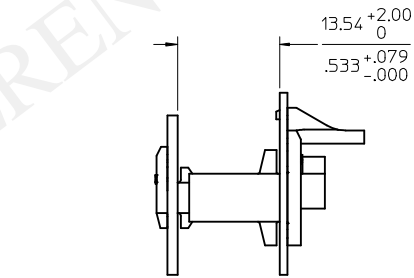
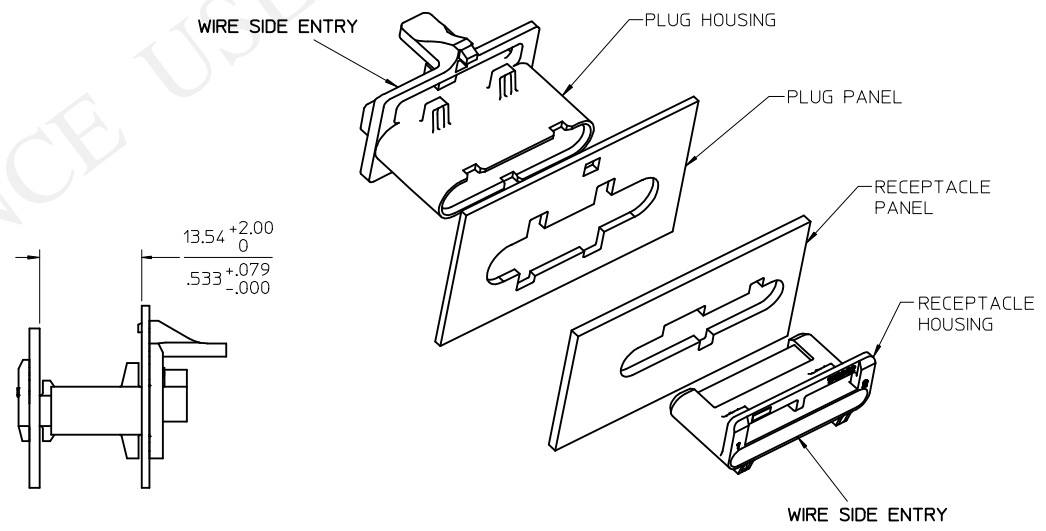
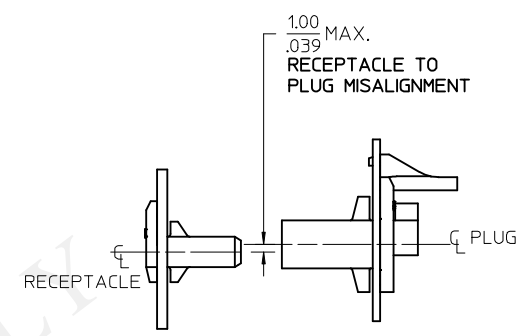
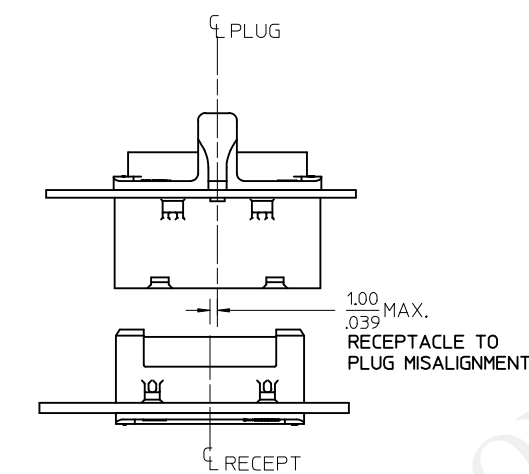
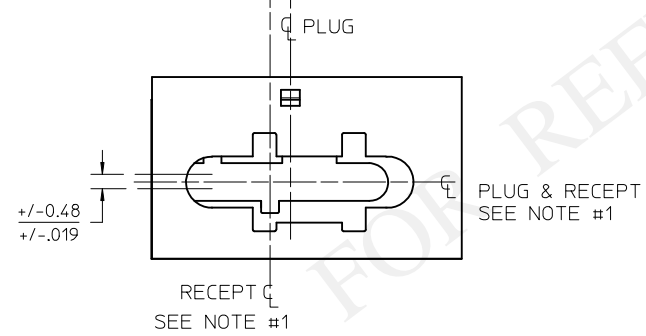


<b>CREATE DRAWING</b> EC NO: UCP2014-0988 DRAWN: NGUYEN 2013/08/30 CHKD: BANDERSON 2013/08/30 APPR: NGUYEN 2013/09/11	QUALITY SYMBOLS ▽=0 ▽=0 ▽=0	GENERAL TOLERANCES (UNLESS SPECIFIED)		DIMENSION STYLE <b>MM/IN</b>	SCALE <b>4:1</b>	DESIGN UNITS <b>METRIC</b>	THIRD ANGLE PROJECTION		
		4 PLACES ± --- ± --- 3 PLACES ± --- ± .010 2 PLACES ± 0.25 ± .014 1 PLACE ± 0.35 ± --- 0 PLACE ± ±	mm INCH	DRAWN BY NGUYEN	DATE 2013/08/30	TITLE <b>SPOX BMI 1X9 PLUG HOUSING</b>			
		ANGULAR ± 2 °		CHECKED BY BANDERSON	DATE 2013/08/30	<b>molex</b>			
		DRAFT WHERE APPLICABLE MUST REMAIN WITHIN DIMENSIONS		APPROVED BY NGUYEN	DATE 2013/09/11	MATERIAL NO. <b>468310003</b>	DOCUMENT NO. <b>SD-46831-003</b>	SHEET NO. <b>1 OF 2</b>	



PANEL CUTOUT  
WIRE ENTRY SIDE VIEW  
PANEL THICKNESS 1.00mm +/-0.15

PANEL TO PANEL 2.70±0.48  
ALIGNMENT .106±.019  
(BOTH DIRECTIONS)



PANEL TO PANEL STACK HEIGHT

- NOTES:
- TO ALIGN 46831 PANEL CUTOUT WITH 172062 PANEL CUTOUT:  
ALIGN HORIZONTAL CENTERLINES AND KEEP 2.70MM BETWEEN VERTICAL CENTERLINES OF THE PANEL CUTOUT IN THE DRAWING SD-172062-100.
  - TERMINALS MUST BE ALLOWED TO FLOAT FREELY WITHIN EACH CORE  
DO NOT TIE WIRES TOGETHER TIGHTLY, ALLOW WIRE TO MOVE.

SEE SHEET 1 EC NO: UCP2014-0988 DRAWN: NGUYEN 2013/08/30 CHKD: BANDERSON 2013/08/30 APPR: NGUYEN 2013/09/11	QUALITY SYMBOLS ▽=0 ▽=0 ▽=0	GENERAL TOLERANCES (UNLESS SPECIFIED)		DIMENSION STYLE MM/IN		SCALE 2:1	DESIGN UNITS METRIC	THIRD ANGLE PROJECTION		
		4 PLACES ± --- ± ---	DRAWN BY NGUYEN	DATE 2013/08/30	TITLE SPOX BMI 1X9 PLUG HOUSING					
		3 PLACES ± --- ± .010	CHECKED BY BANDERSON	DATE 2013/08/30						
		2 PLACES ± 0.25 ± .014	APPROVED BY NGUYEN	DATE 2013/09/11						
1 PLACE ± 0.35 ± ---	ANGULAR ± 2 °		MATERIAL NO.	DOCUMENT NO.		SHEET NO.		2 OF 2		
0 PLACE ± ±	DRAFT WHERE APPLICABLE MUST REMAIN WITHIN DIMENSIONS		SEE SHEET 1		SD-46831-003					
THIS DRAWING CONTAINS INFORMATION THAT IS PROPRIETARY TO MOLEX INCORPORATED AND SHOULD NOT BE USED WITHOUT WRITTEN PERMISSION										