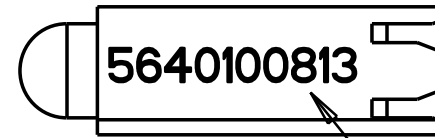
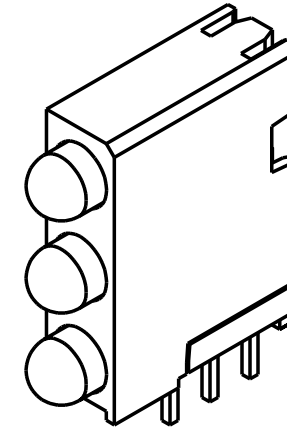
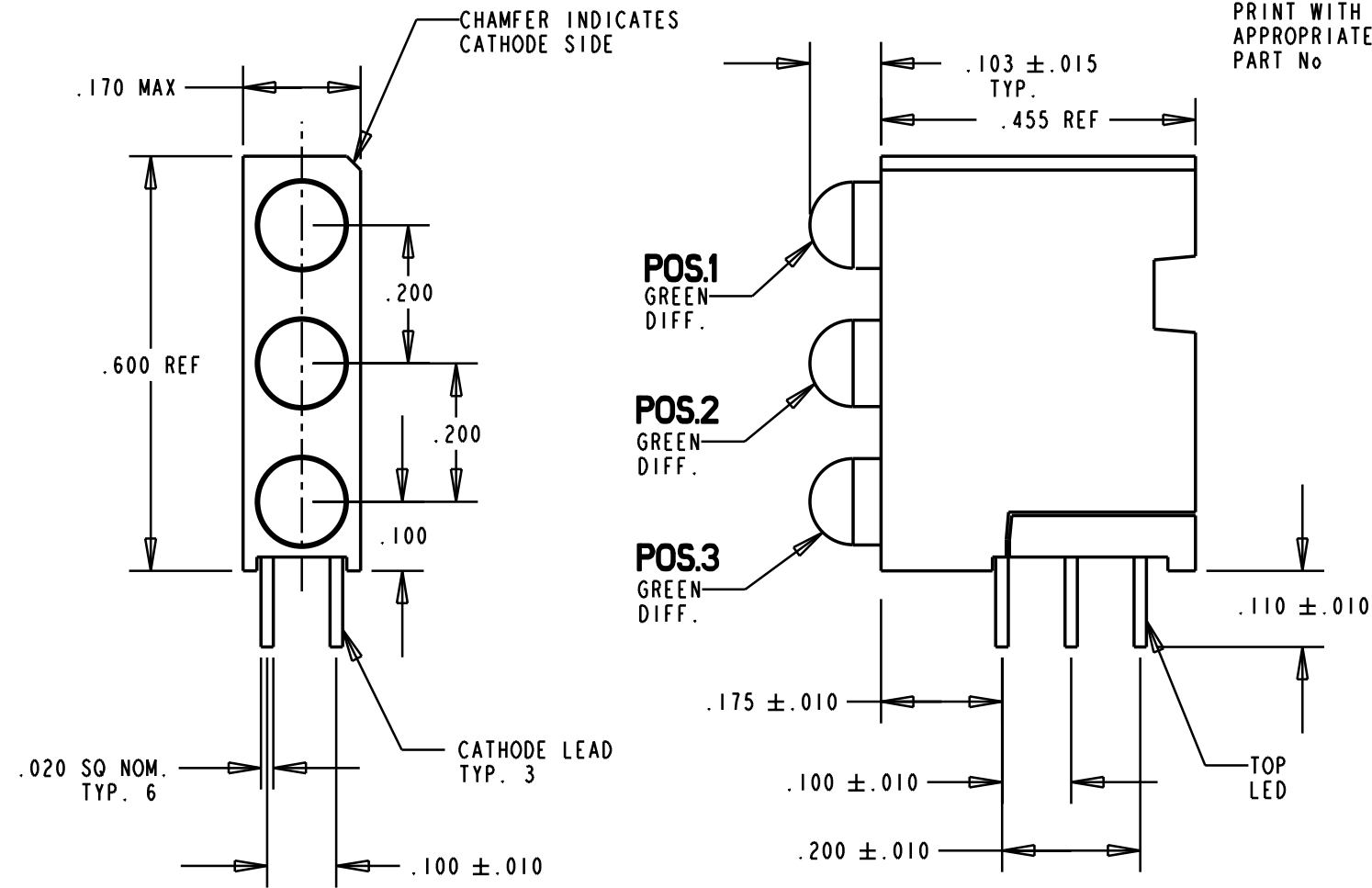


REV.	ECN NO.	REVISIONS	DRN.	CKD.	APP.	DATE
A		NEW RELEASE	TC	DC	N.O.	3-24-99
B		REORIENTED PRINTING.	TC			

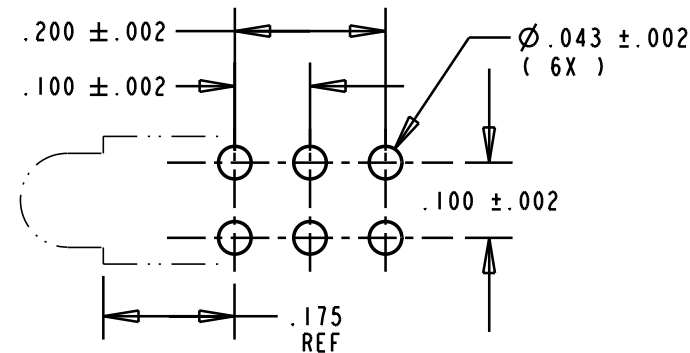
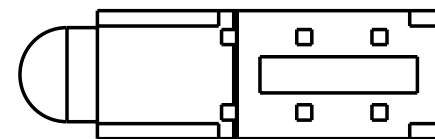


LEGEND AREA  
-----  
PRINT WITH  
APPROPRIATE  
PART No



ABSOLUTE MAXIMUM RATING AT 25°C AMBIENT	UNITS	GREEN DIFF.
POWER DISSIPATION	mW	100
DERATE LINEARLY FROM 50°C	mA/°C	0.4
CONTINUOUS FORWARD CURRENT	mA	30
PEAK FORWARD CURRENT (1/10 DUTY CYCLE, 0.1 ms PULSE WIDTH)	mA	120
LEAD SOLDERING TEMPERATURE, 5 SEC., 1/16" FROM BODY	°C	260
OPERATING TEMPERATURE	°C	-55 TO 100
STORAGE TEMPERATURE	°C	-55 TO 100

LED COLOR =						
OPERATING CHARACTERISTICS AT 25°C AMBIENT						
CHARACTERISTICS	LED COLOR	MIN	TYP	MAX	UNITS	TEST CONDITIONS
LUMINOUS INTENSITY	GREEN DIFF.	4.7	12.6		mc d	$I_f = 10 \text{ mA}$
FORWARD VOLTAGE	GREEN DIFF.		2.1	2.8	V	$I_f = 20 \text{ mA}$
REVERSE CURRENT	GREEN DIFF.			100	$\mu\text{A}$	$V_R = 5 \text{ V}$
PEAK WAVELENGTH	GREEN DIFF.		565		nm	
VIEWING ANGLE	GREEN DIFF.		60		Degree	
CAPACITANCE	GREEN DIFF.		35		pf	$V_f = 0, f = 1 \text{ MHz}$



RECOMMENDED PC BOARD HOLE PATTERN

NOTES:  
1- LEADS TO FIT INTO HOLES SPACED AS PER HOLE PATTERN.  
2- LED LEAD DIMENSIONS SHOWN ARE MEASURED AT HOUSING EXIT  
3- DIALIGHT PART NUMBER 564-0100-813.

THIS DRAWING AND THE CONTENTS HEREIN ARE CONFIDENTIAL AND THE SOLE PROPERTY OF DIALIGHT. REPRODUCTION OF THIS DRAWING OR CONSTRUCTION OF ANY PARTS WITHIN THIS DRAWING ARE FORBIDDEN WITHOUT THE WRITTEN CONSENT OF DIALIGHT.

SCALE 4:1	DRAWING NUMBER	REV
ALL DIM'S IN: INCHES	C-16476	B
TOLERANCES: UNLESS OTHERWISE SPECIFIED	TITLE STANDARD 3XI CBI BLOCK	
FRACTIONS: $\pm 1/64$ DECIMALS (.XX): $\pm .020$ DECIMALS (.XXX): $\pm .015$	MATERIAL	
ANGLES: $\pm 3^\circ$	Dialight	
FINISH:	1913 ATLANTIC AVE. MANASQUAN, N.J. 08736	
FSCM 83330	SHEET OF	FAMILY TABLE: