

4

3

2

1


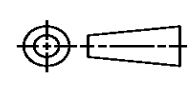
THIS DRAWING IS UNPUBLISHED. RELEASED FOR PUBLICATION
 © COPYRIGHT ALL RIGHTS RESERVED.

LOC		DIST		REVISIONS			
P	LTR	DESCRIPTION		DATE	DWN	APVD	
	B1	ECR-14-002334		18FEB2014	GK	HMR	

REPLACED BY OCEAN STYLE APPLICATOR PART NUMBER 2151022-1

FOR REPLACEMENT PARTS FOR APPLICATOR 1855467
 REFER TO ADDITIONAL PAGE(S). SPARE PARTS KIT (IF LISTED)
 WILL REMAIN AVAILABLE.

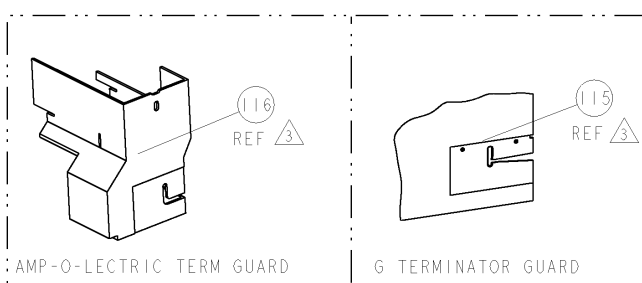
THE REPLACEMENT OCEAN STYLE APPLICATOR HAS THE
 SAME TERMINATOR/PRESS INTERFACE AS APPLICATOR
 1855467

THIS DRAWING IS A CONTROLLED DOCUMENT.		DWN	GOPALAKRISHNA HV		 TE Connectivity	
DIMENSIONS:		CHK	RAGHAVENDRA			
		APVD	RAGHAVENDRA		NAME FINE ADJUST SIDE FEED HDM APPLICATOR	
TOLERANCES UNLESS OTHERWISE SPECIFIED: 0 PLC ± 1 PLC ± 2 PLC ± 3 PLC ± 4 PLC ± ANGLES ±		PRODUCT SPEC				
MATERIAL	FINISH	APPLICATION SPEC	SIZE	CAGE CODE	DRAWING NO	RESTRICTED TO
			A3		©- 1855467	
CUSTOMER DRAWING			SCALE	SHEET 1 OF 2	REV B1	

PART NUMBER	REV	FIRST USED	POWER UNIT	FEED TYPE	DESCRIPTION
1855467-1	A	122500-1	LEADMAKER	POST FEED	CUTS CARRIER
1855467-2	A	565435-5	BENCH MODEL K	PRE FEED	CUTS CARRIER
1855467-3	A	354500-1	BENCH MODEL G	PRE FEED	CUTS CARRIER
1855467-6	B	122500-1	LEADMAKER	POST FEED	CONTINUOUS CARRIER
7-1855467-7	A	-	-	-	SPARE PARTS

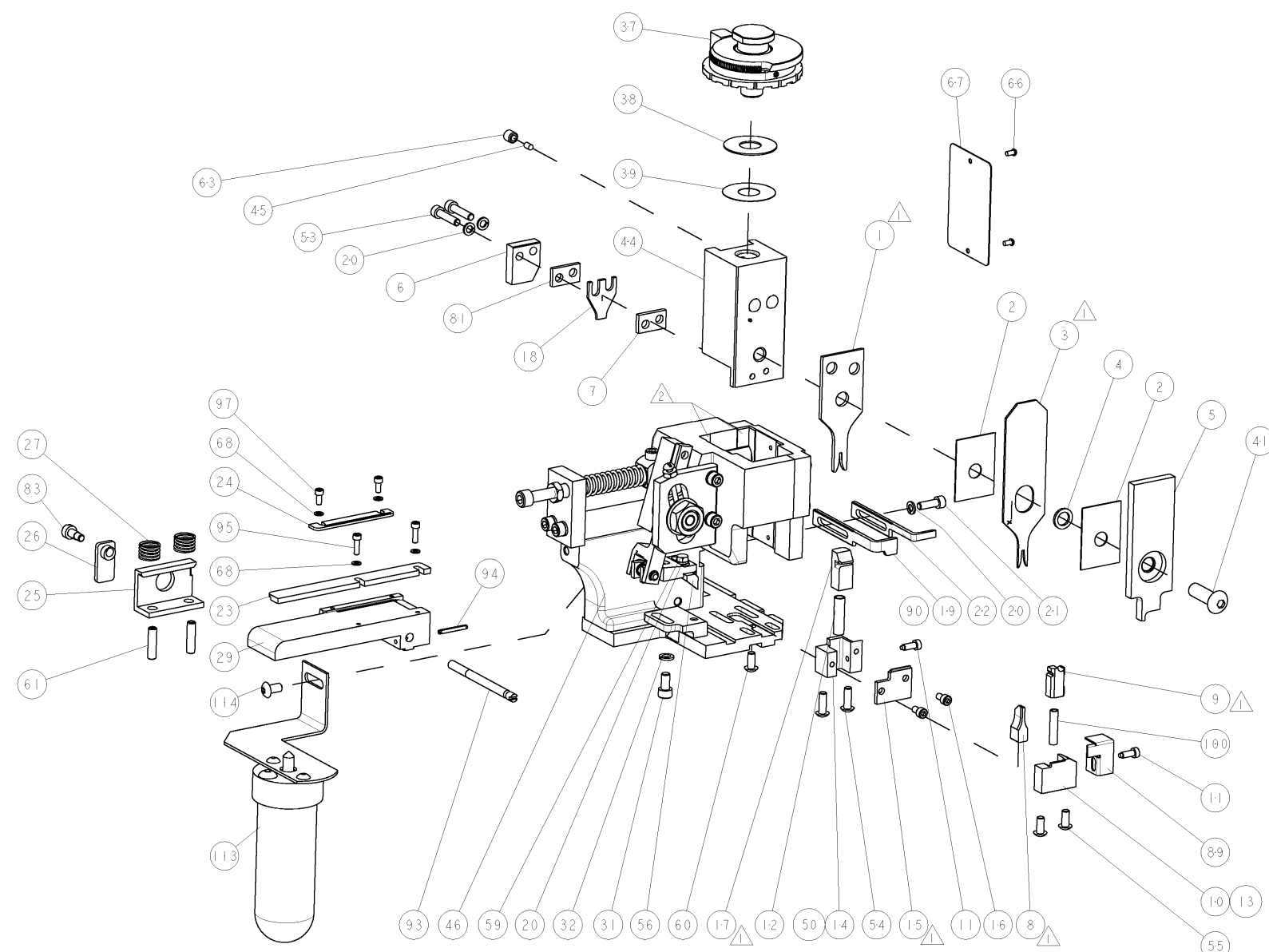
- △ RECOMMENDED SPARE PARTS
- △ GREASE LIGHTLY
- △ GUARD MUST BE IN PLACE WHEN OPERATING APPLICATOR IN A BENCH MACHINE

*** WARNING**
ON INSTALLATION, SET WIRE DISC TO LARGEST WIRE SIZE SETTING. USE OF SETTINGS BELOW MIN. REQUIRED CRIMP HEIGHT SETTING WILL CAUSE DAMAGE TO CRIMP TOOLING.

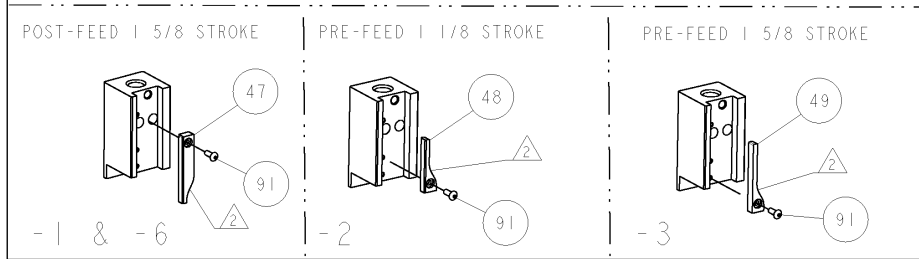


TERMINAL NAME: CONTACT, RECEPTACLE, MICRO MATE-N-LOCK			
TE PN	TE TERMINAL	TE CRIMP SPECS	REF SETTING
794606	-	-	-
-	-	CRIMP HEIGHT	WIRE SIZE
-	-	.89mm+.05/- .05 [.035+.002/- .002]	20AWG
-	-	.79mm+.05/- .05 [.031+.002/- .002]	22AWG
-	-	.69mm+.05/- .05 [.027+.002/- .002]	24AWG
-	-	-	-
-	-	CRIMP	SIZE
-	-	WIRE	1.40mm [.055]
-	-	INSUL	1.78mm [.070]
-	-	FEED	6.35
-	-	APPLICATOR INSTRUCTIONS	408-8040
-	-	SET UP GAGE	458637-1

REV	DESCRIPTION	DATE	BY	CHKD
A	RELEASED	04FEB2009	RK	GB
B	ECR-09-012984	08JAN2009	MY	GB



REV	DESCRIPTION	DATE	BY	CHKD
-	REF -	455749-1	GUARD WINDOW	116
-	REF -	679532-1	INSERT, GUARD	115
-	-	2-21002-6	SCR, BTN SKT HD CAP 10-32 X .375	114
-	-	1-465184-0	LUBRICATOR ASSY	113
-	-	6-22279-3	SPRING, COMPRESSION	100
-	-	1-21000-3	SCR, SKT HD CAP 4-40 X .250	97
-	-	1-21000-4	SCR, SKT HD CAP 4-40 X .375	95
-	-	4-21028-0	PIN, SLOTTED SPRING .094 X .750	94
-	-	690432-3	ADJUSTMENT SCREW	93
-	-	1-21002-7	SCR, BTN SKT HD CAP 6-32 X .375	91
-	-	318563-1	GUARD, FRONT CHIP	89
-	-	22353-8	SCR, SHLD, SLOT HD, 3/16 DIA	83
-	-	240641-9	SPACER	81
-	-	4088040	SF APPL INST 408-8040	72
-	-	217238-1	GENERAL INSTRUCTION PKG	71
-	-	21024-2	WASHER, SPRG LOCK, REG NO 4	68
-	-	461264-5	PLATE, IDENTIFICATION	67
-	-	21017-2	SCREW, DRIVE	66
-	-	21009-2	SCR, SET, SELF LOCKING 1/4-20 X .250	63
-	-	5-21006-6	SCR, SET, CUP POINT 10-32 X .750	61
-	-	22733-8	SCR, BHSC, SELF-LOCKING, 8-32 X .375	60
-	-	2-22603-0	SCREW, MACH, HEX HD, 8-32 X .312	59
-	-	694433-7	FEED PAWL	56
-	-	2-21002-1	SCR, BTN SKT HD CAP 8-32 X .375	55
-	-	2-21002-2	SCR, BTN SKT HD CAP 8-32 X .500	54
-	-	2-21000-9	SCR, SKT HD CAP 8-32 X .750	53
-	-	681023-1	SHEAR HOLDER, REAR	50
-	-	690602-6	CAM, PRE FEED, 1 5/8	49
-	-	690602-5	CAM, PRE FEED, 1 1/8	48
-	-	690501-4	CAM, POST-FEED 1 5/8	47
-	-	459456-1	APPL, BASIC SUB ASSY (SIDE WISE MOCA)	46
-	-	690191-1	PLUG, NYLON	45
-	-	455673-1	RAM, SIDE FEED	44
-	-	7-21002-9	SCR, BTN SKT HD CAP 5/16-24 X 1.00	41
-	-	690125-1	SHIM SUB-ASSY	39
-	-	469367-8	SHIM	38
-	-	879103-3	FINE ADJUST HEAD ASSEMBLY	37
-	-	21024-5	WASHER, SPRG LOCK, REG NO 10	32
-	-	3-21000-4	SCR, SKT HD CAP 10-32 X .375	31
-	-	844048-1	PLATE, REAR STRIP GUIDE	29
-	-	455888-5	SPACER, CRIMPER	28
-	-	1-22284-0	SPRING, COMPRESSION	27
-	-	356835-1	LEVER, DRAG RELEASE	26
-	-	240792-1	DRAG, TERMINAL	25
-	-	690438-1	FRONT STRIP GUIDE	24
-	-	189124-7	GUIDE, FRONT STRIP	23
-	-	690472-2	STRIPPER	22
-	-	2-21000-7	SCR, SKT HD CAP 8-32 X .500	21
-	-	21024-4	WASHER, SPRG LOCK, REG NO 8	20
-	-	691353-1	STRIPPER	19
-	-	1-690518-0	HOLD DOWN, TERMINAL	18
-	-	690463-1	FLOATING SHEAR, REAR	17
-	-	1-21000-8	SCR, SKT HD CAP 6-32 X .250	16
-	-	1-690691-1	PLATE, REAR SHEAR	15
-	-	690462-1	SHEAR HOLDER, REAR	14
-	-	1-679625-9	SHEAR HOLDER, FRONT (NO CUT)	13
-	-	3-22280-3	SPRING, COMPRESSION	12
-	-	690461-1	STOP, SHEAR	11
-	-	468798-1	HOLDER, SHEAR, FRONT	10
-	-	462006-3	FLOATING SHEAR, FRONT	9
-	-	3-904132-6	ANVIL, COMBINATION	8
-	-	240641-2	SPACER	7
-	-	690468-2	DEPRESSOR SHEAR, REAR	6
-	-	455889-9	DEPRESSOR, SHEAR	5
-	-	2-238011-0	BLOCK, CRIMPER SPACER	4
-	-	2-683453-0	CRIMPER, INSULATION PREMIUM	3
-	-	455888-5	SPACER, CRIMPER	2
-	-	4-456402-5	CRIMPER, WIRE PREMIUM	1



APPROVED: [Signature]	DATE: 08 JAN 2009	DESIGNED: [Signature]	DATE: 04 FEB 2009
DIMENSIONS: INCHES		TOLERANCES UNLESS OTHERWISE SPECIFIED:	
0 PLC	± .01	1 PLC	± .01
2 PLC	± .01	3 PLC	± .01
4 PLC	± .001	5 PLC	± .001
6 PLC	± .0001	7 PLC	± .0001
MATERIAL: -		FINISH: -	
WEIGHT: -		SCALE: 3:5	
CUSTOMER DRAWING		SHEET 1 OF 1	