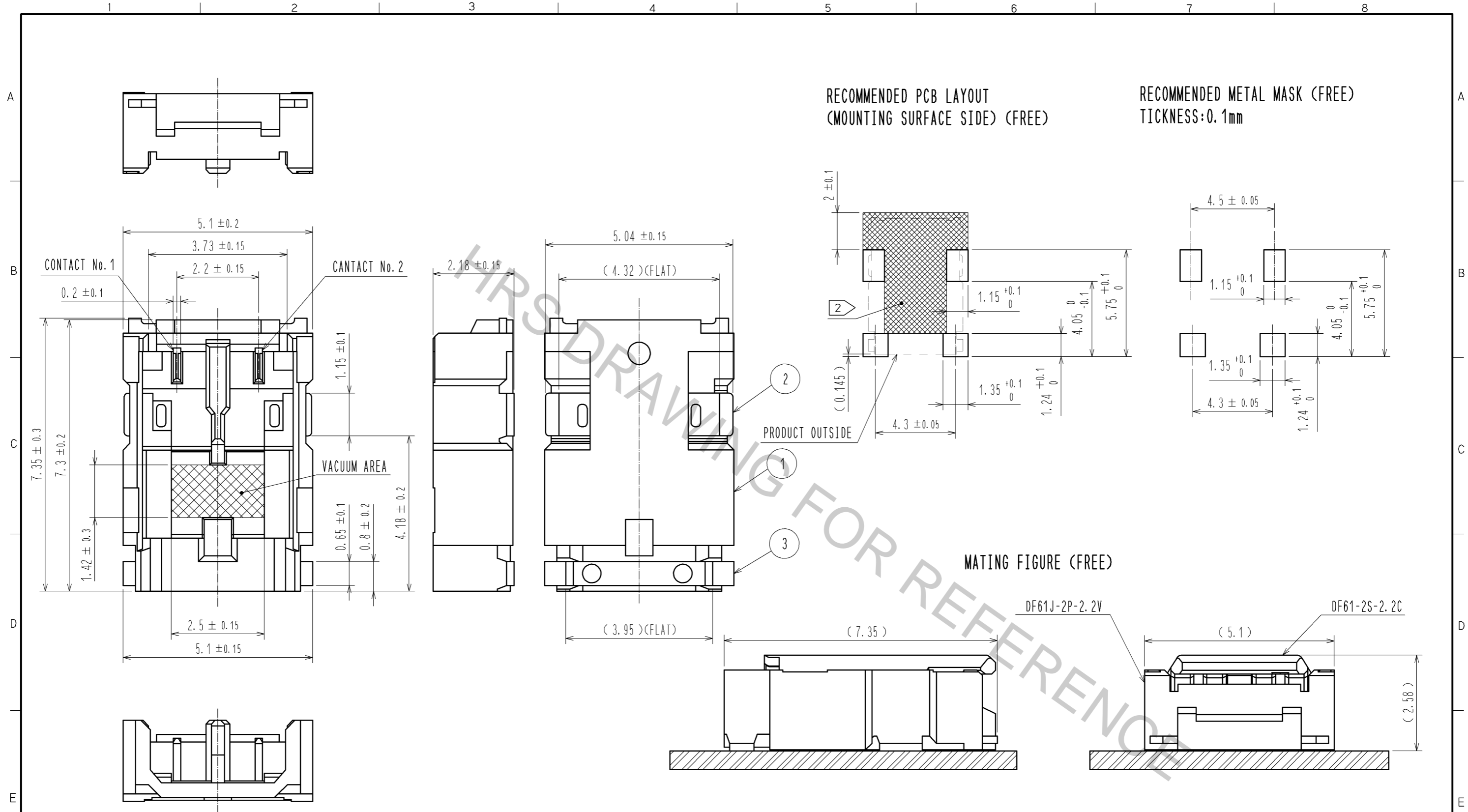
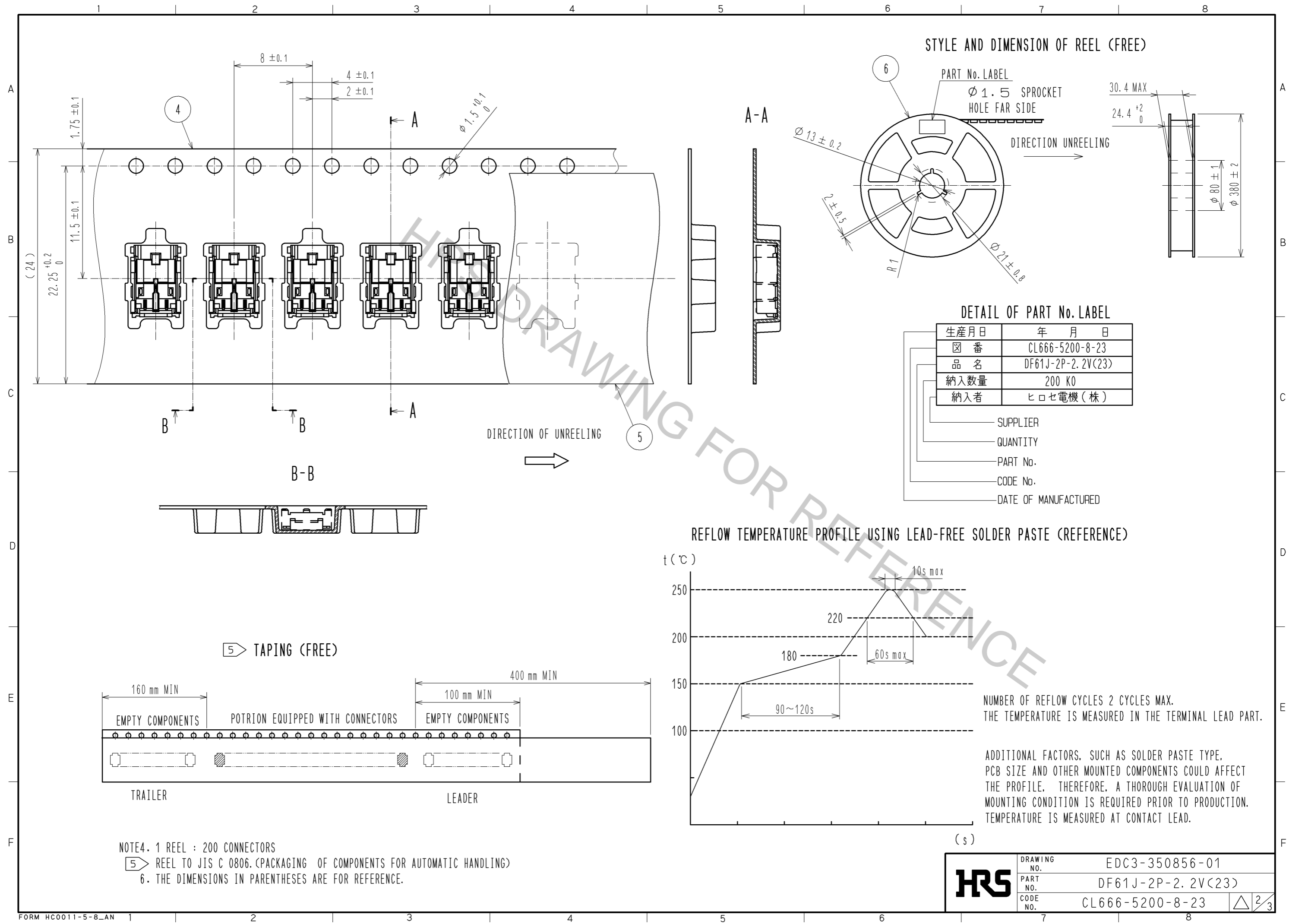


Apr.1.2017 Copyright 2017 HIROSE ELECTRIC CO., LTD. All Rights Reserved.



NOTE1. LEAD CO-PLANARITY SHALL BE 0.1mmMAX
 2. :FOR THE USE UNDER 350 V CONDITION. PLEASE DESIGN THE LAYOUT TO KEEP ENOUGH CREEPAGE DISTANCE. AND ARRANGE NO CONDUCTIVE TRACE OR RESIST COVERAGE IF NECESSARY.
 3. PLEASE CONSULT HIROSE WHEN THE PRODUCT IS MONUTED TO FPC.

3	BRASS	SURFACE:TIN PLATING 1μmMIN UNDER PLATING:NICKEL PLATING 0.5μmMIN			
2	BRASS	SURFACE:TIN PLATING 1μmMIN UNDER PLATING:NICKEL PLATING 0.5μmMIN	6	PS	REEL. BLACK
1	LCP	UL94V-0. BEIGE	5	POLYESTER	CLEER(COVER TAPE)
			4	PS	CLEER(CENBOSSED CARRIER TAPE)
NO.	MATERIAL	FINISH . REMARKS	NO.	MATERIAL	FINISH . REMARKS
UNITS		SCALE	COUNT	DESCRIPTION OF REVISIONS	
mm		10:1		DESIGNED	CHECKED
HRS HIROSE ELECTRIC CO., LTD.		APPROVED : KI. AKIYAMA	13.04.22	DRAWING NO. EDC3-350856-01	
		CHECED : HK. UMEHARA	13.04.22	PART NO. DF61J-2P-2.2V(23)	
		DESIGNED : ST. SATO	13.04.19	CODE NO. CL666-5200-8-23	
		DRAWN : ST. SATO	13.04.19	1/3	



STYLE AND DIMENSION OF REEL (FREE)

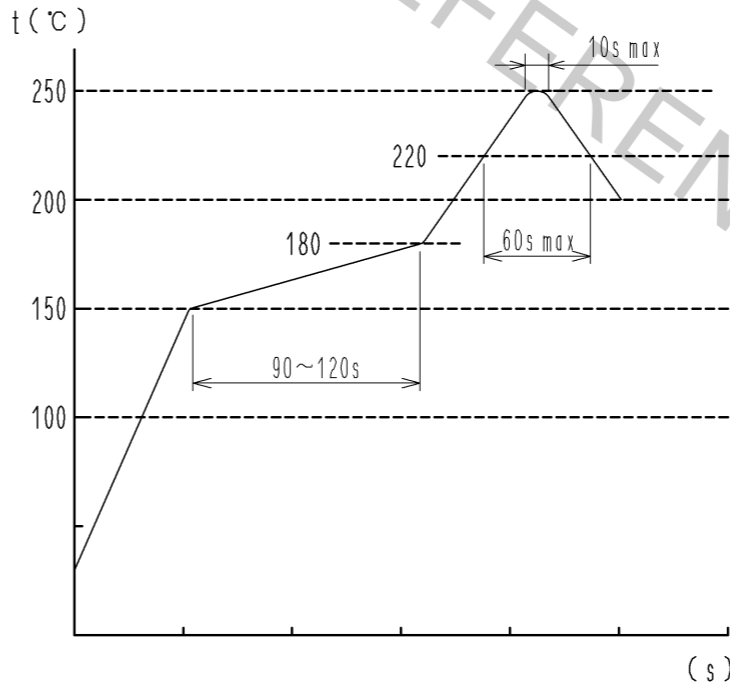
PART No. LABEL
 Ø 1.5 SPROCKET HOLE FAR SIDE

DETAIL OF PART No. LABEL

生産月日	年 月 日
☒ 番	CL666-5200-8-23
品名	DF61J-2P-2.2V(23)
納入数量	200 KO
納入者	ヒロセ電機(株)

- SUPPLIER
- QUANTITY
- PART No.
- CODE No.
- DATE OF MANUFACTURED

REFLOW TEMPERATURE PROFILE USING LEAD-FREE SOLDER PASTE (REFERENCE)



NUMBER OF REFLOW CYCLES 2 CYCLES MAX.
 THE TEMPERATURE IS MEASURED IN THE TERMINAL LEAD PART.

ADDITIONAL FACTORS, SUCH AS SOLDER PASTE TYPE, PCB SIZE AND OTHER MOUNTED COMPONENTS COULD AFFECT THE PROFILE. THEREFORE, A THOROUGH EVALUATION OF MOUNTING CONDITION IS REQUIRED PRIOR TO PRODUCTION. TEMPERATURE IS MEASURED AT CONTACT LEAD.

- NOTE4. 1 REEL : 200 CONNECTORS
 5 TAPING (FREE)
 6. THE DIMENSIONS IN PARENTHESES ARE FOR REFERENCE.

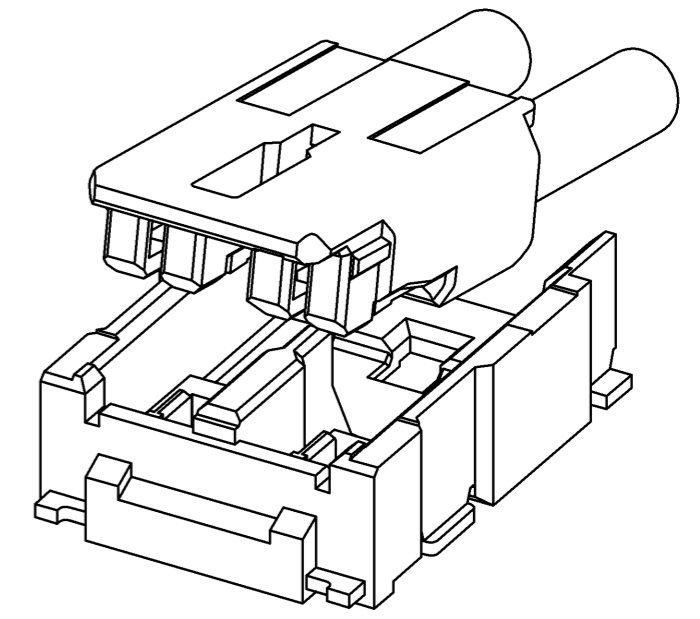
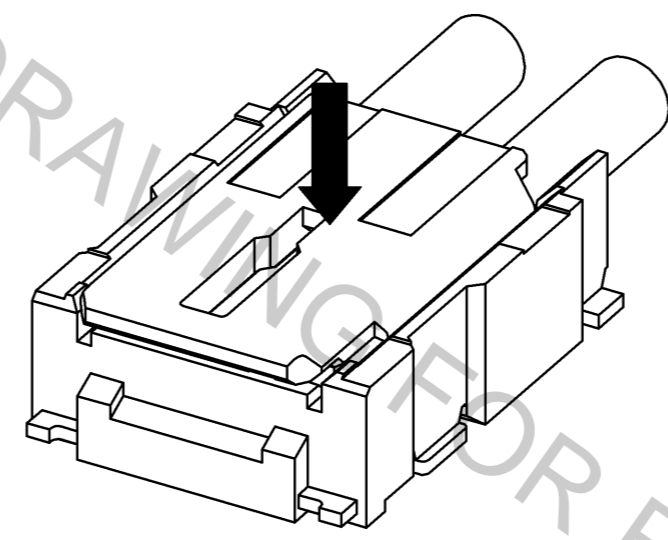
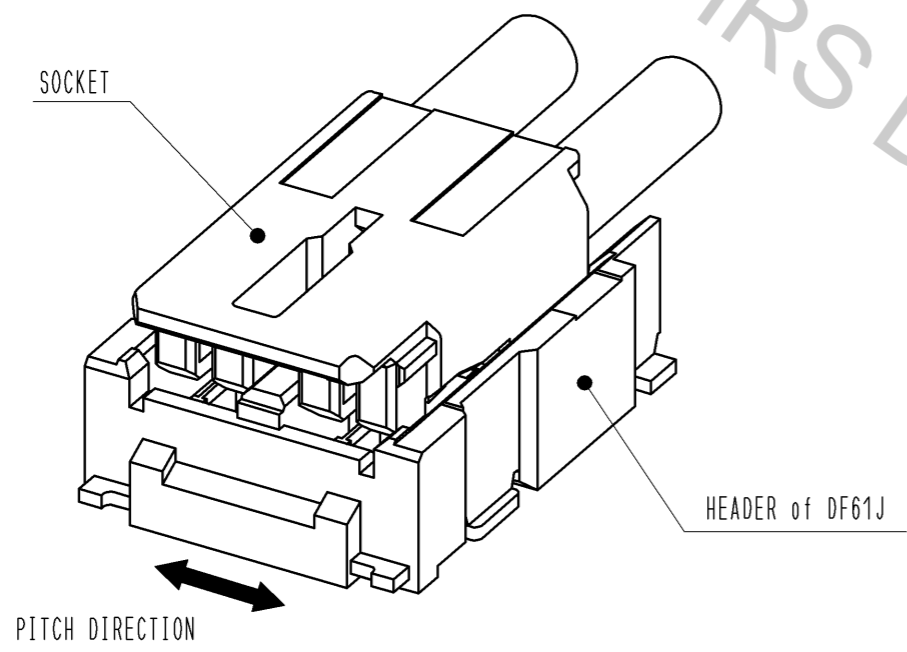
HRS	DRAWING NO.	EDC3-350856-01
	PART NO.	DF61J-2P-2.2V(23)
	CODE NO.	CL666-5200-8-23
		△ 2/3

Test Instruction by DF61J Series

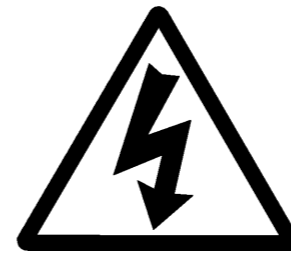
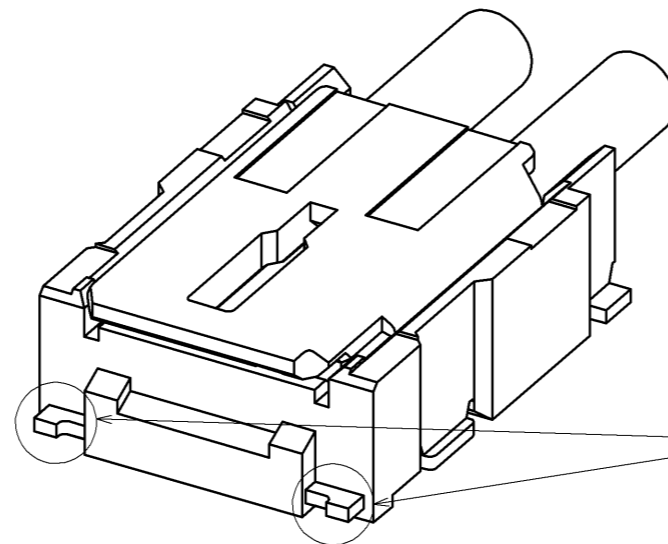
① By positioning the convexity of the socket sides to the header concavity, align the centers of the socket and the header in pitch direction.

② Press the socket down for mating.
Keep pressing the socket to avoid unmating while testing.

③ Remove the socket.



ELECTRICAL SHOCK HAZARD



DO NOT TOUCH THIS PART !

HRS	DRAWING NO.	EDC3-350856-01	3/3
	PART NO.	DF61J-2P-2.2V(23)	
	CODE NO.	CL666-5200-8-23	