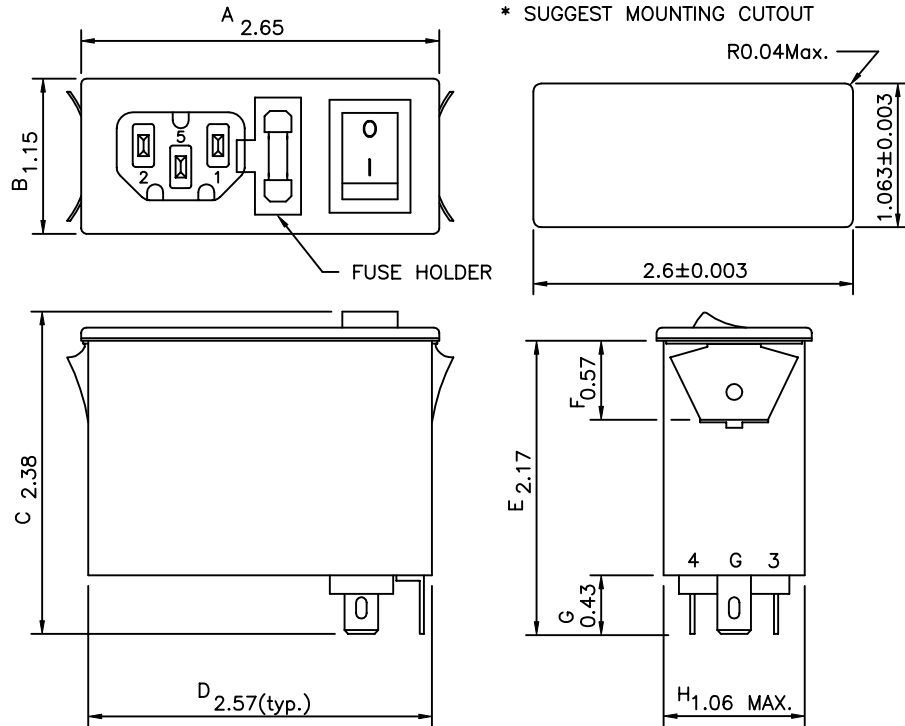


Revision			
Rev.	Description	Date	Approved

1. PHYSICAL DIMENSIONS:



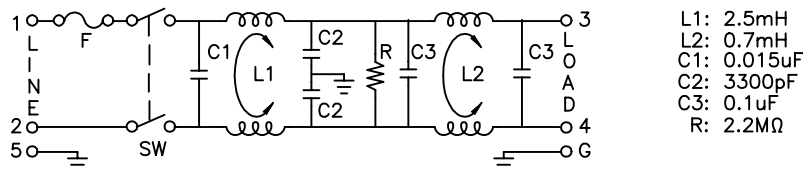
- * SUGGESTED THICKNESS OF MOUNTING PANEL IS FROM 0.04 TO 0.07 INCH
- * SUGGEST MOUNTING CUTOUT

1. ELECTRICAL CHARACTERISTICS:

- 1-1. VOLTAGE RATING 115/250VAC
- 1-2. CURRENT RATING
 - A. AT 115VAC 6 A RMS Max.
 - B. AT 250VAC 4 A RMS Max.
- 1-3. OPERATING FREQUENCY..... 50/60 Hz
- 1-4. LEAKAGE CURRENT: EACH LINE TO GROUND
 - A. @115VAC 60Hz 0.25 mA MAX.
 - B. @250VAC 50Hz 0.45 mA MAX.
- 1-5. HIPOT RATING (FOR ONE MINUTE)
 - A. LINE TO GROUND 2250VDC
 - B. LINE TO LINE 1450VDC
- 1-6. TEMPERATURE RANGE: -25 TO +85 DEGREE C
- 1-7. MINIMUM INSERTION LOSS IN dB: (AT 50 OHM SYSTEM)

FREQ. MHz	.01	.05	.10	.15	.50	1.0	5.0	10	30
COM. MODE dB	/	/	22	34	60	60	45	40	30
DIF. MODE dB	/	/	5	10	10	50	50	45	40

2. SCHEMATIC:



1-8. SAFETY



Dim range (mm)		Tolerance +/- (mm)		Qualtek Electronics Corp. PPC DIVISION		
Part Number: 863-06/003				Description: EMI FILTER		
0-1	0.15	UNIT: INCH		Approved/Date		
1-6	0.20			JZH/09-17-01		
6-18	0.30					
18-50	0.50					
50-120	0.70					
120-250	0.90					
250-500	1.20					
				Drawn/Date	Checked/Date	Approved/Date
				B.ZHANG 09-17-01	BAC 09-17-01	JZH/09-17-01