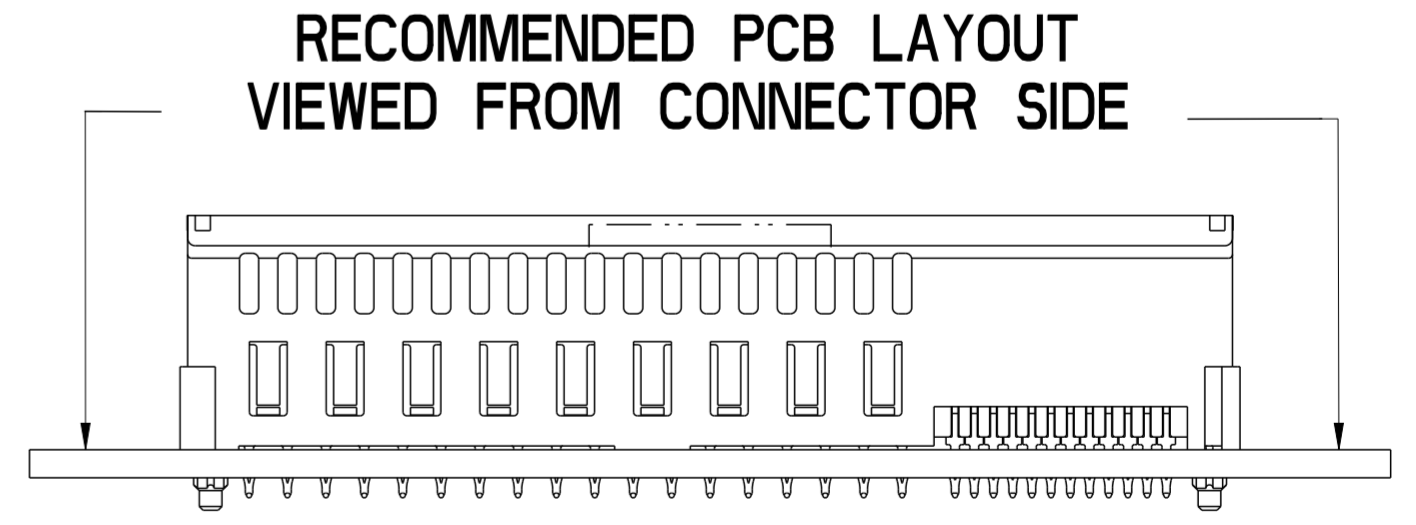
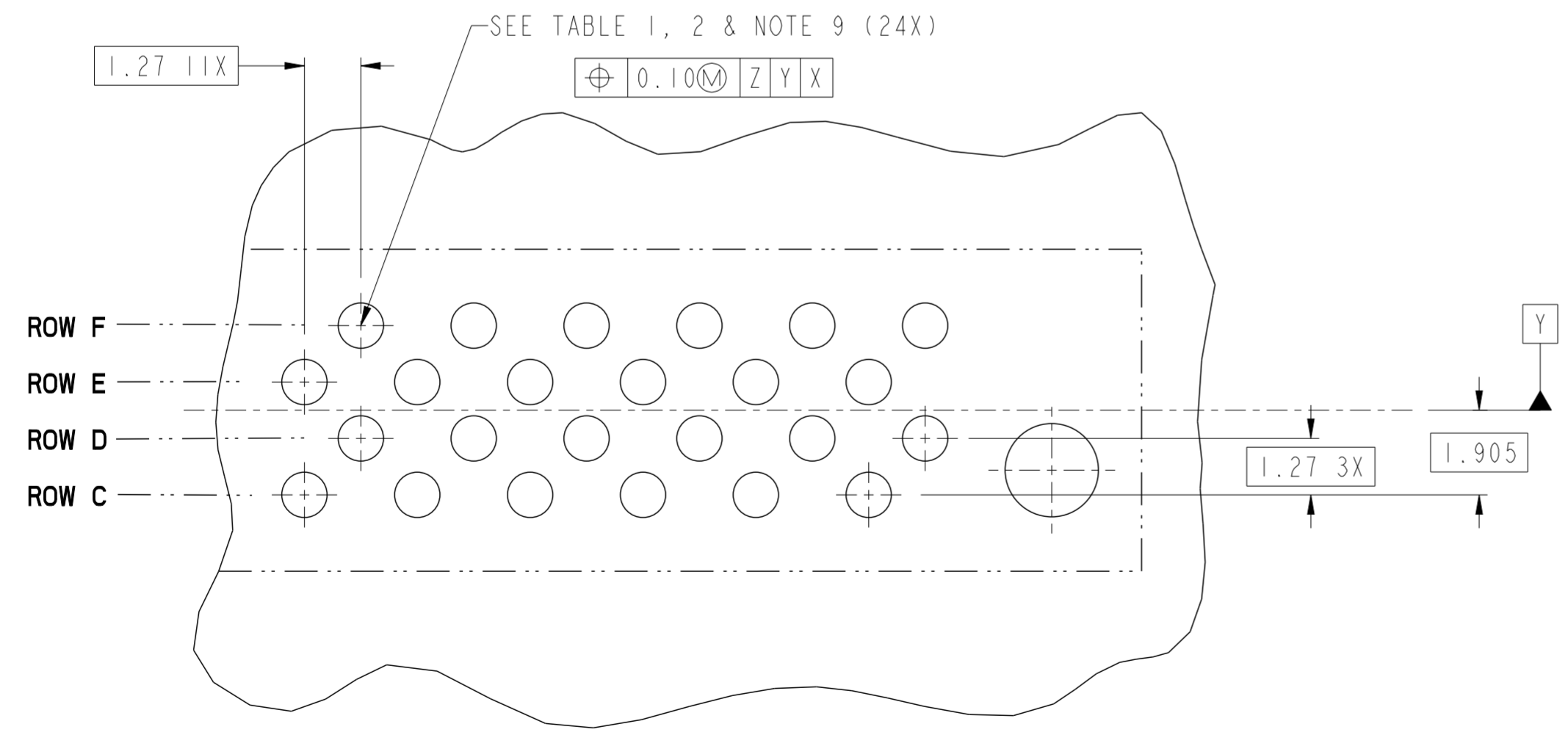
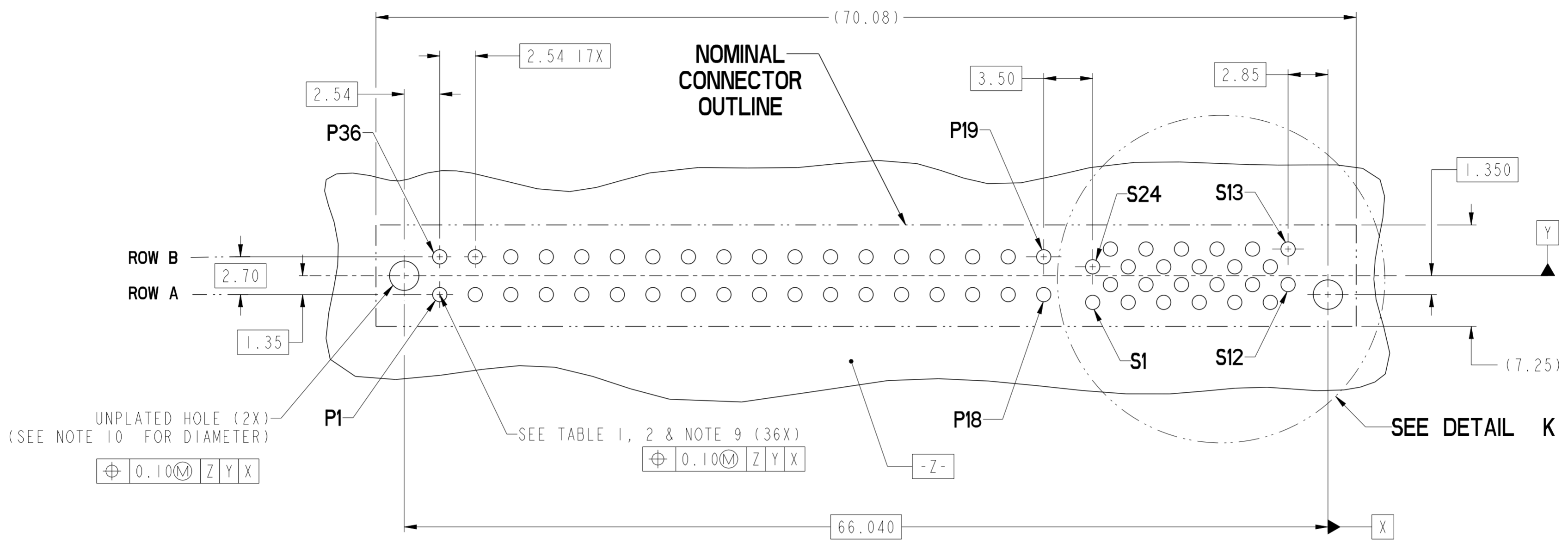


SECTION C-C

SECTION D-D

rev	ecn no	dr	date	spec ref	dr	Wei-Long Zhang	2011/05/20	projection	MM	size	A2	scale	4:1
A	-	HZ	2011-10-27	tolerance std	eng	Wei-Long Zhang	2012/09/17			ecn no	ELX-DG-012747-1	rel level	Released
B	ELX-DG-012747-1	HZ	2012-09-06	ASME Y14.5	chr	-	product family						
-	-	-	-	surface	appr	Pei-Ming Zheng	2012/09/18			cat. no.	10118251	rev	B
-	-	-	-	ASME Y14.5	TOLERANCES UNLESS OTHERWISE SPECIFIED linear 0.X ±0.3 0.XX ±0.1 0.XXX ±0.05 angular 0° ±2°			www.fci.com		VERT RECT (36P 24S) HIGH POWER CARD EDGE		Product - Customer Draw sheet 1 of 4	

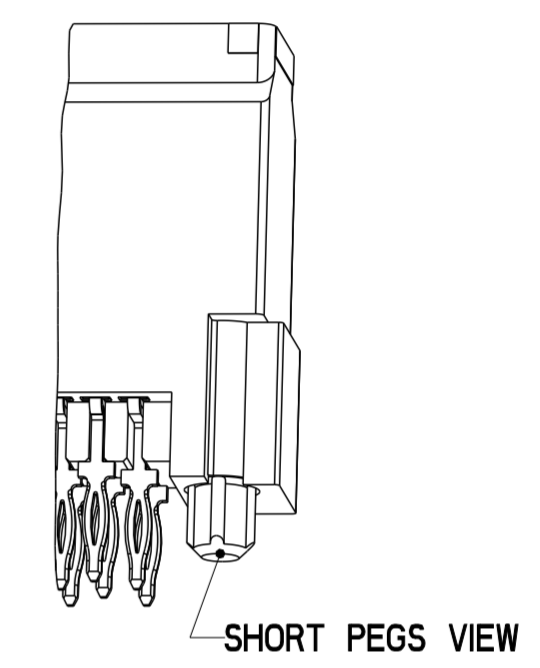
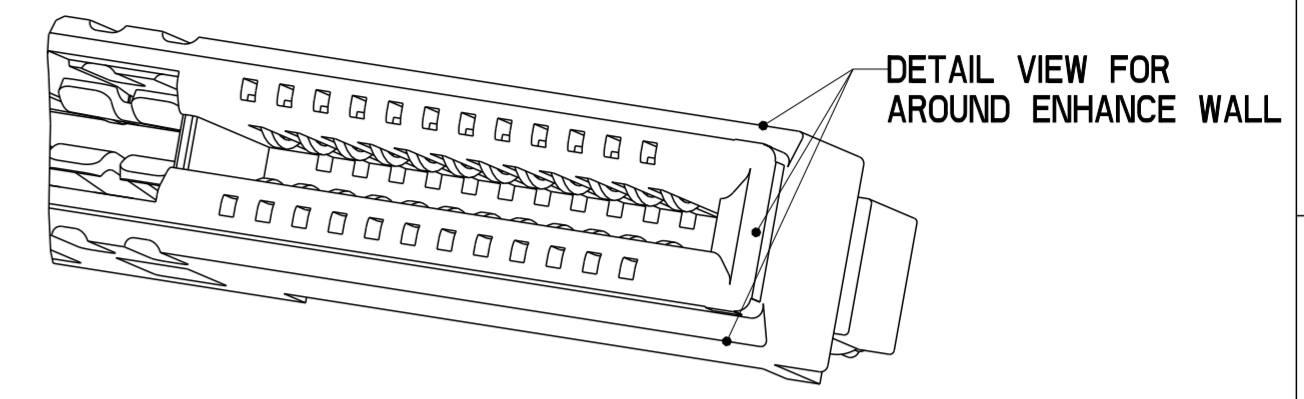


dr	Wei-Long Zhang	2011/05/20	projection	MM	size	A2	scale	4:1	
eng	Wei-Long Zhang	2012/09/17			ecn no	ELX-DG-012747-1			
chr	-	-			rel level	Released			
appr	Pai-Ming Zheng	2012/09/18	product family	CARD EDGE	rel level	Released			
		title	VERT RECT (36P 24S) HIGH POWER CARD EDGE		dwg no	10118251		rev	B
www.fci.com		cat. no.	-		Product - Customer Drw	sheet 2 of 4			

Copyright FCI.

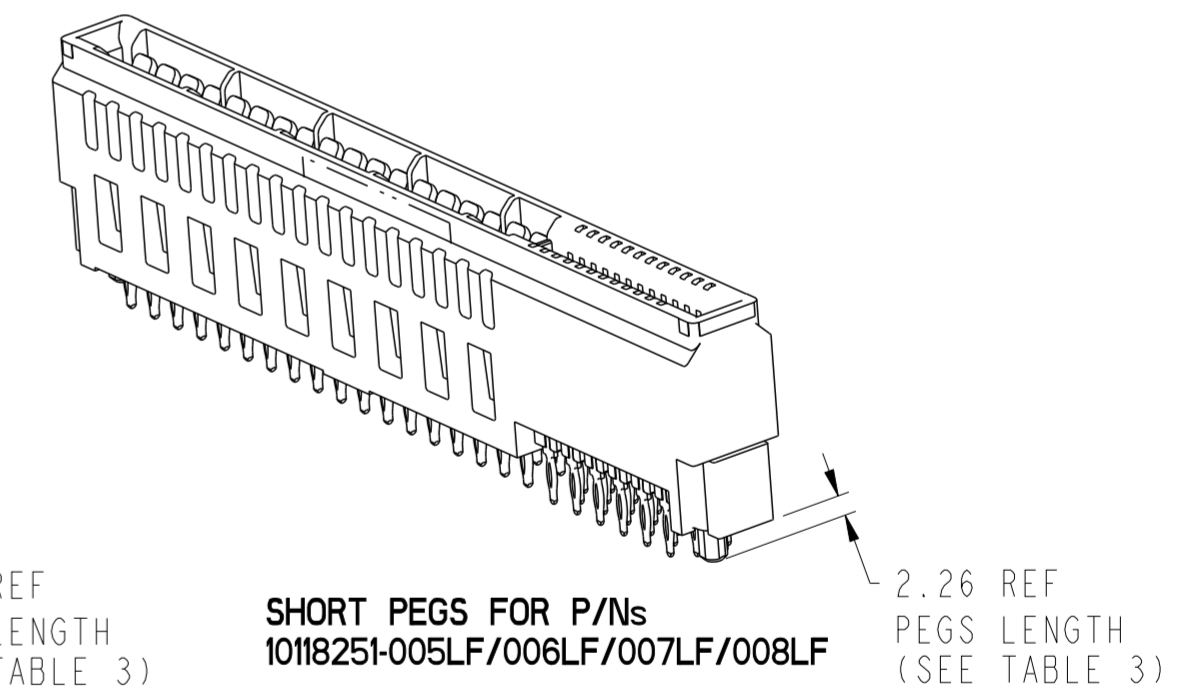
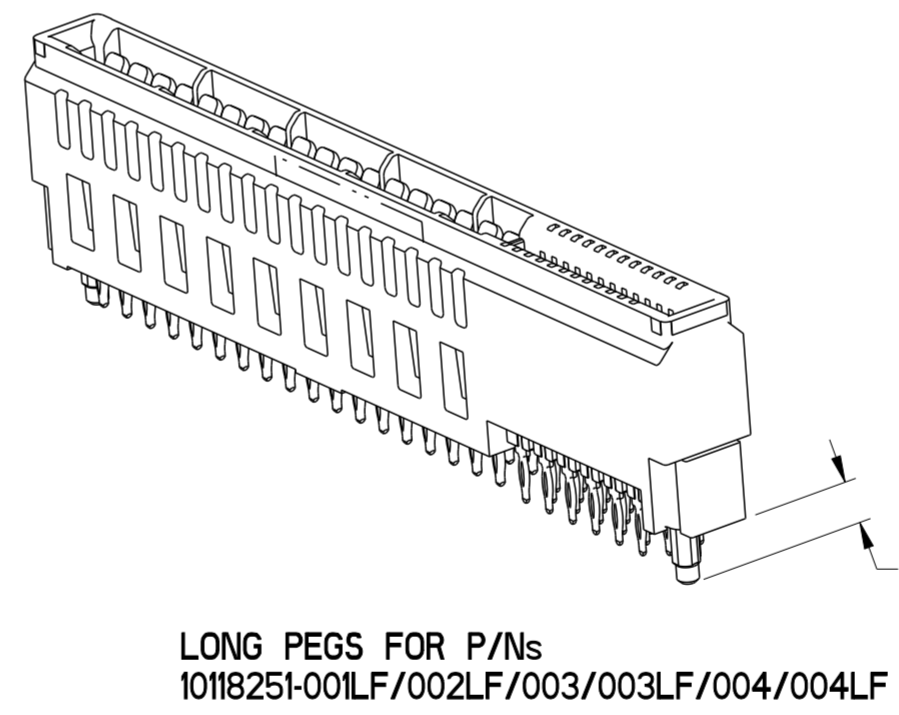
HPCE PART NUMBER (TABLE 3)

PART NUMBER	TAIL TYPE	ORIENTATION KEY	DIM "A" TYPICAL TAIL LENGTH	DIM "B" RECOMMENDED BOARD THICKNESS	DIM "C" REF PEGS LENGTH	SPECIFIED APPLICATION TOOL
10118251-001LF	SOLDER	YES	3.17 ±0.25	1.59 - 2.38	4.00	NO
10118251-002LF	SOLDER	NO				
10118251-003	PRESS-FIT	YES	3.17 ±0.25	1.57 MIN	4.00	YES NOTE 11
10118251-003LF	PRESS-FIT	YES				
10118251-004	PRESS-FIT	NO				
10118251-004LF	PRESS-FIT	NO	3.17 ±0.25	1.59 - 2.38	2.26	NO
10118251-005LF	SOLDER	YES				
10118251-006LF		NO				
10118251-007LF	PRESS-FIT	YES	3.17 ±0.25	1.57 MIN	2.26	YES NOTE 11
10118251-008LF		NO				



NOTES:

- CONNECTOR MATERIALS:
 HOUSING: HIGH TEMPERATURE THERMAL PLASTIC, BLACK
 UL 94V-0 COMPLIANT
 CONTACTS: HIGH PERFORMANCE COPPER ALLOY.
- CONTACT FINISH REF. GS-12-604 SECTION 5.2.
- PRODUCT SPECIFICATION: GS-12-604.
- APPLICATION SPECIFICATION: GS-20-128.
- PRODUCT MARKING (FCI - PART NUMBER & DATE CODE) ON HOUSING IN AREA SHOWN.
- PACKAGING MEETS FCI SPECIFICATION GS-14-937.
- HOUSING COMPONENT WILL WITHSTAND EXPOSURE TO 260°C PEAK TEMPERATURE FOR 60 SECONDS IN A CONVECTION, INFRA-RED, OR VAPOR PHASE REFLOW OVEN.
- COPPER PLATING THICKNESS IN CENTER OF VIA-HOLE CAN BE NO MORE THAN 0.003 LESS THAN OTHER AREAS.
- ALL HOLE SIZES ARE FINISHED HOLE SIZES.
- MOUNTING HOLES ARE UNPLATED
 Ø 2.40 +/- 0.1 FOR PRESS-FIT TAILS
 Ø 2.10 +/- 0.1 FOR SOLDER TAILS
 Ø 2.18 +/- 0.03 FOR SOLDER TAILS WITH LOW INSERTION FORCE CREATED BY PEGS.
- APPLICATION TOOL DRAWING: 10119453.



Copyright FCI. FCI

dr	Wei-Long Zhang	2011/05/20	projection	MM	size	A2	scale	4:1
eng	Wei-Long Zhang	2012/09/17			ecn no	ELX-DG-012747-1		
chr	-	-			rel level	Released		
appr	Pai-Ming Zheng	2012/09/18	product family	CARD EDGE	rel level	Released		
		title	VERT RECT (36P 24S)		dwg no	10118251		rev
www.fci.com		cat. no.	-		Product - Customer Drw	sheet 4 of 4		B