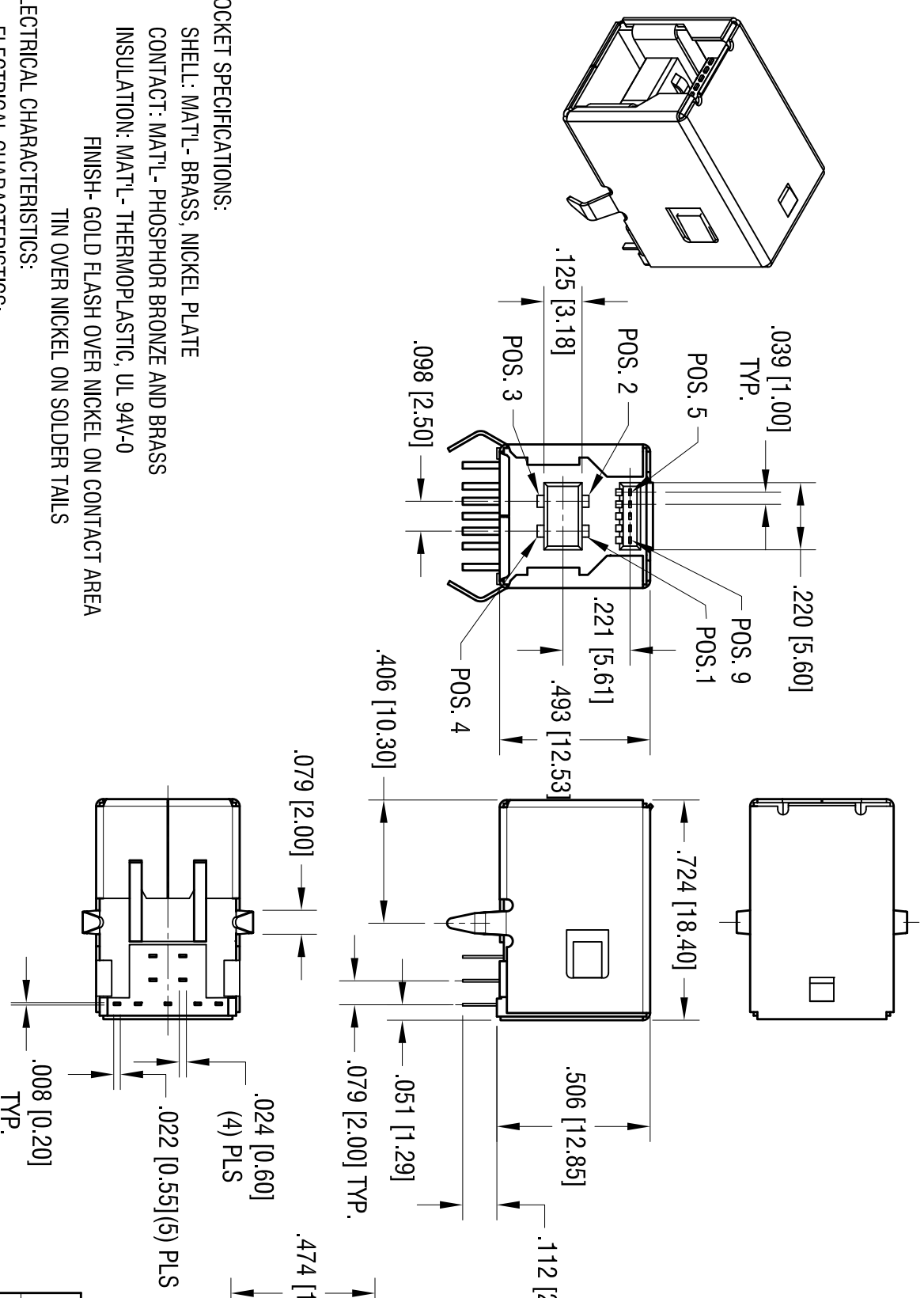
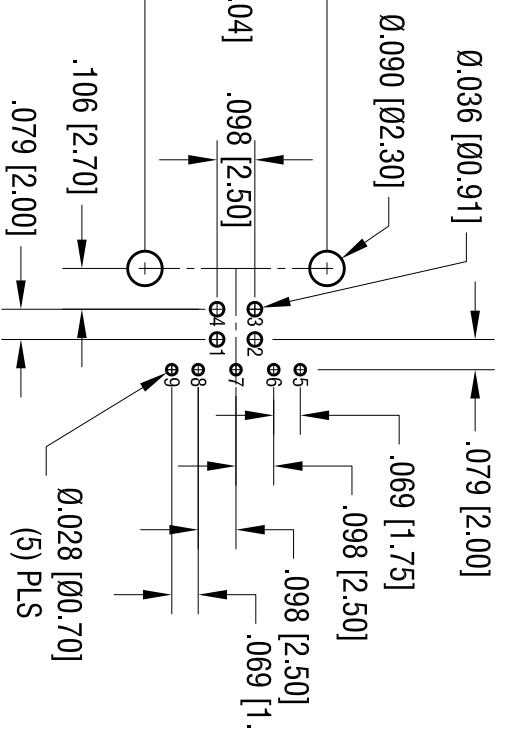


DATE	DESCRIPTION	REV.
5.23.11	CHANGE AS PER ECN 11-067	A



**SB3.0 'B' RECEPTACLE FOOTPRINT**  
TOLERANCE ±.002 [±0.05]



**SOCKET SPECIFICATIONS:**

- SHELL: MAT'L- BRASS, NICKEL PLATE
- CONTACT: MAT'L- PHOSPHOR BRONZE AND BRASS
- INSULATION: MAT'L- THERMOPLASTIC, UL 94V-0
- FINISH- GOLD FLASH OVER NICKEL ON CONTACT AREA
- TIN OVER NICKEL ON SOLDER TAILS

**ELECTRICAL CHARACTERISTICS:**

- CONTACT RESISTANCE: 30m Ω max.
- INSULATION RESISTANCE: 1000 mega Ω min.
- DIELECTRIC VOLTAGE : 1.8 Amp AT 250 V AC MIN.

**MECHANICAL CHARACTERISTICS:**

- OPERATING TEMPERATURE: -13°F (-25°C) TO 176°F (+80°C)
- INSERTION FORCE: 35N MAX.

**KEYSTONE ELECTRONICS CORP.**  
www.keystone.com • ASTORIA, N.Y. 11105-2017 • Tel (718) 956-8900

PART NAME: **USB 3.0 TYPE B**

MATERIAL: **AS NOTED**

FINISH: **AS NOTED**

THIS DOCUMENT IS THE PROPERTY OF KEYSTONE ELECTRONICS CORP. AND SHALL NOT BE REPRODUCED, DISTRIBUTED OR USED AS A BASIS FOR MANUFACTURE WITHOUT PRIOR WRITTEN PERMISSION FROM KEYSTONE ELECTRONICS CORP.

TOLERANCES	INCH	[MM]	CODE	DWG NO.
DECIMAL	± .010	[± 0.25]	C/M	950
ANGULAR	± 1°			
FINISH	AS NOTED			
DRN BY	NT	DATE	4.9.10	
APP'D	LN	SCALE	2X	