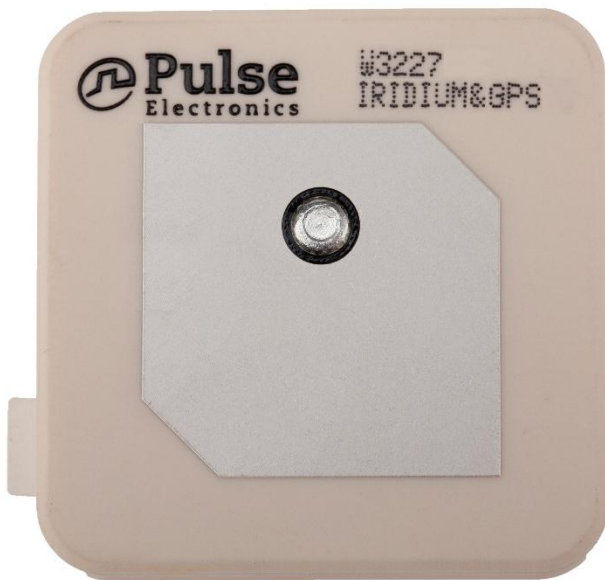


Series: Patch Antenna

**Description:** Ceramic Patch Antenna, 40x40x6.6mm  
PIN Mount, GNSS/IRIDIUM

**PART NUMBER: W3227**



### Features:

- Center Frequency 1621 MHz
- Band Width 177MHz
- Polarization RHCP
- Gain 4dBic
- Size 1.575 x 1.575 x 0.26"

### Applications:

- Satellite signal reception
- Iridium
- GNSS (Beidou, GPS, Galileo, Glonass)
- Timing Antennas
- Tracking
- Asset Management

All dimensions are in mm / inches

Issue: 1721

In the effort to improve our products, we reserve the right to make changes judged to be necessary.

CONFIDENTIAL AND PROPRIETARY INFORMATION

This document contains confidential and proprietary information of Pulse Electronics, Inc. (Pulse) and is protected by copyright, trade secret and other state and federal laws. Its receipt or possession does not convey any rights to reproduce, disclose its contents, or to manufacture, use or sell anything it may describe. Reproduction, disclosure or use without specific written authorization of Pulse is strictly forbidden.

For more information:

Pulse Worldwide Headquarters  
15255 Innovation Drive #100  
San Diego, CA 92128  
USA  
Tel: 1-858-674-8100

Pulse/Larsen Antennas  
18110 SE 34<sup>th</sup> St Bldg 2 Suite 250  
Vancouver, WA 98683  
USA  
Tel: 1-360-944-7551

Europe Headquarters  
Pulse GmbH & Do, KG  
Zeppelinstrasse 15  
Herrenberg, Germany  
Tel: 49 7032 7806 0

Pulse (Suzhou) Wireless Products Co, Inc.  
99 Huo Ju Road(#29 Bldg,4<sup>th</sup> Phase  
Suzhou New District  
Jiangsu Province, Suzhou 215009 PR China  
Tel: 86 512 6807 9998



**Description:** Ceramic Patch Antenna, 40x40x6.6mm  
PIN Mount, GNSS/IRIDIUM

**Series:** Patch Antenna

**PART NUMBER: W3227**

### ELECTRICAL SPECIFICATIONS\*

Antenna Type	Ceramic Patch antenna
Center Frequency	1621MHz ±10MHz
Frequency band	1532-1709MHz
Nominal Impedance	50 Ω
VSWR in whole band	<3.5:1
VSWR at center frequency	<1.7:1
Peak RHCP Gain at Zenith	>4dBic at center frequency
Half Power Beam Width	110° Solid angle
Efficiency	60% typical
Polarization	RHCP

\* All test on 63X63mm ground plane

### MECHANICAL SPECIFICATIONS

Overall Length	1.575 x 1.575 x 0.26"
Weight	35.8 g
Antenna Color / Material	White

### ENVIRONMENTAL SPECIFICATIONS

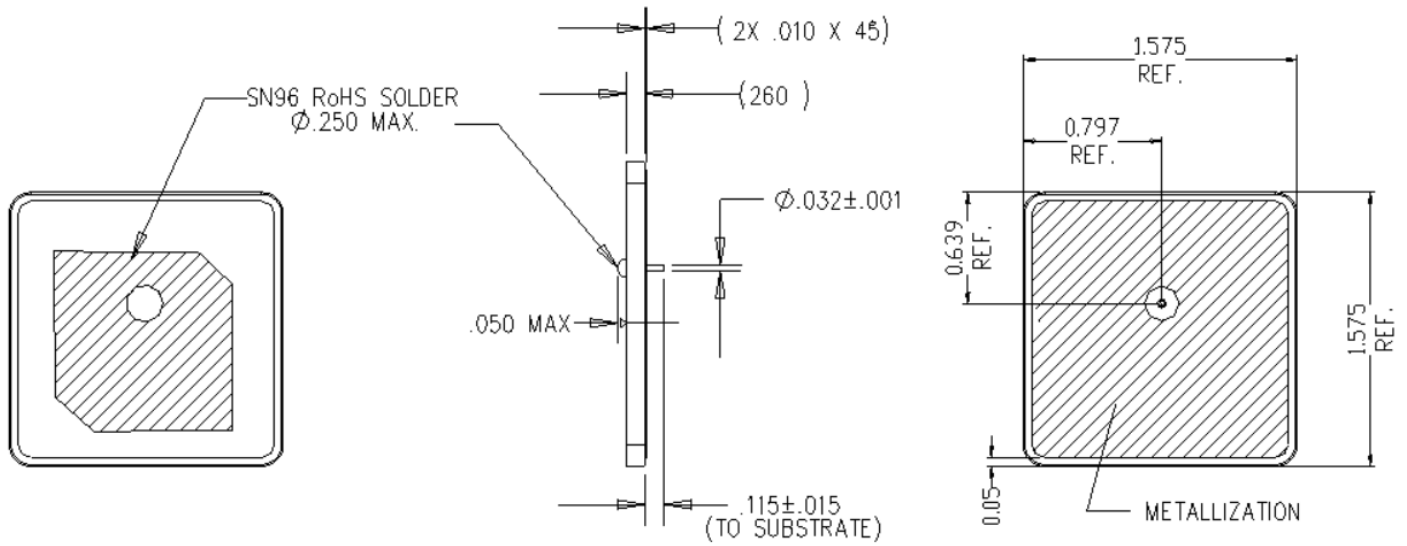
Operating Temperature	-40°C to +105°C
Storage Temperature	-40°C to +105°C

**Description:** Ceramic Patch Antenna, 40x40x6.6mm  
PIN Mount, GNSS/IRIDIUM

**Series:** Patch Antenna

**PART NUMBER:** W3227

**MECHANICAL DRAWING**



Issue: 1721

In the effort to improve our products, we reserve the right to make changes judged to be necessary.

CONFIDENTIAL AND PROPRIETARY INFORMATION

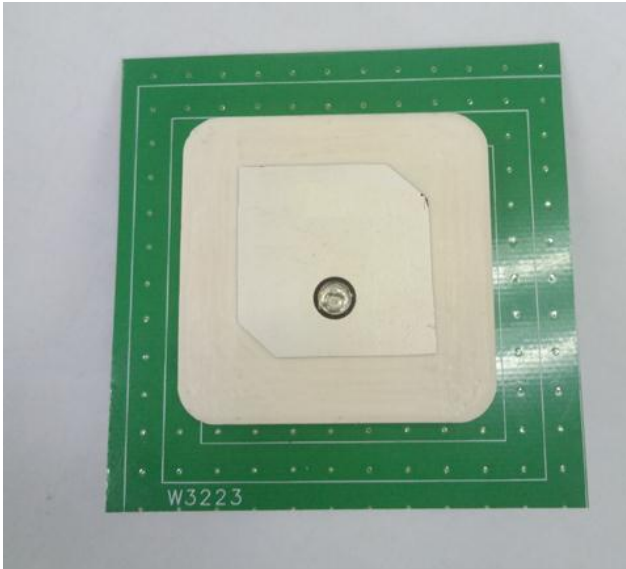
This document contains confidential and proprietary information of Pulse Electronics, Inc. (Pulse) and is protected by copyright, trade secret and other state and federal laws. Its receipt or possession does not convey any rights to reproduce, disclose its contents, or to manufacture, use or sell anything it may describe. Reproduction, disclosure or use without specific written authorization of Pulse is strictly forbidden.

**Description:** Ceramic Patch Antenna, 40x40x6.6mm  
PIN Mount, GNSS/IRIDIUM

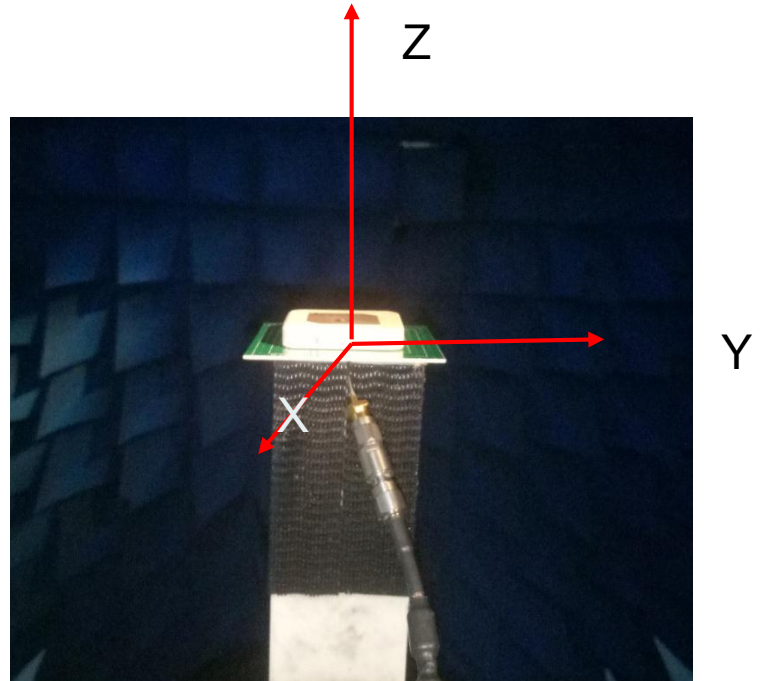
**Series:** Patch Antenna

**PART NUMBER:** W3227

**TEST SETUP**



For VSWR  
On 63X63 mm ground plane



In Chamber

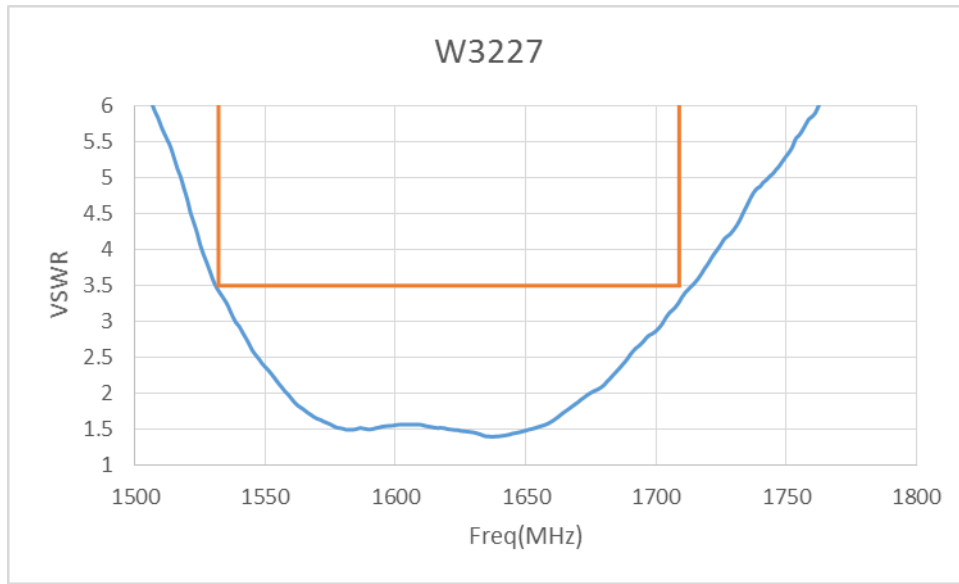
**Description:** Ceramic Patch Antenna, 40x40x6.6mm  
PIN Mount, GNSS/IRIDIUM

**Series:** Patch Antenna

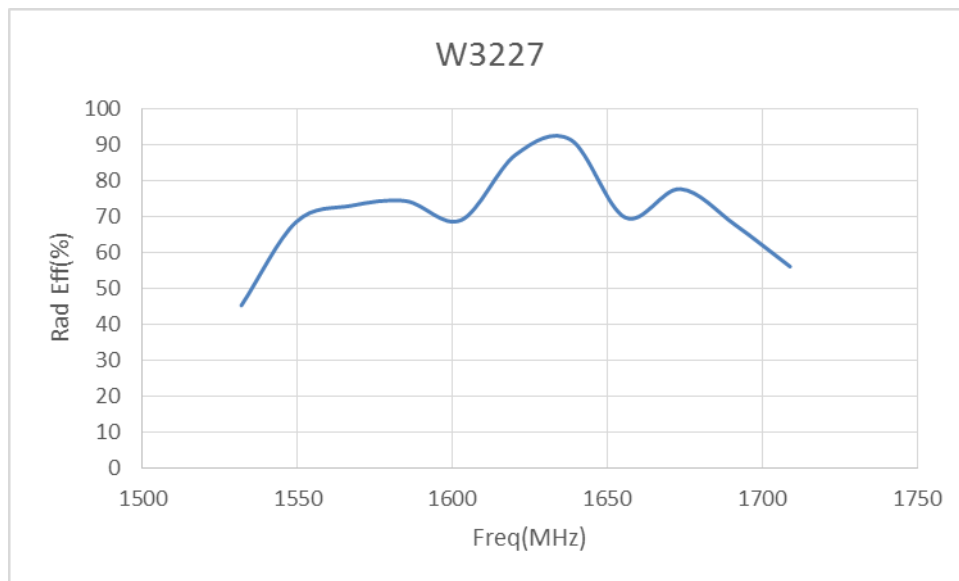
**PART NUMBER:** W3227

CHARTS

VSWR



Radiation Efficiency



Issue: 1721

In the effort to improve our products, we reserve the right to make changes judged to be necessary.

CONFIDENTIAL AND PROPRIETARY INFORMATION

This document contains confidential and proprietary information of Pulse Electronics, Inc. (Pulse) and is protected by copyright, trade secret and other state and federal laws. Its receipt or possession does not convey any rights to reproduce, disclose its contents, or to manufacture, use or sell anything it may describe. Reproduction, disclosure or use without specific written authorization of Pulse is strictly forbidden.

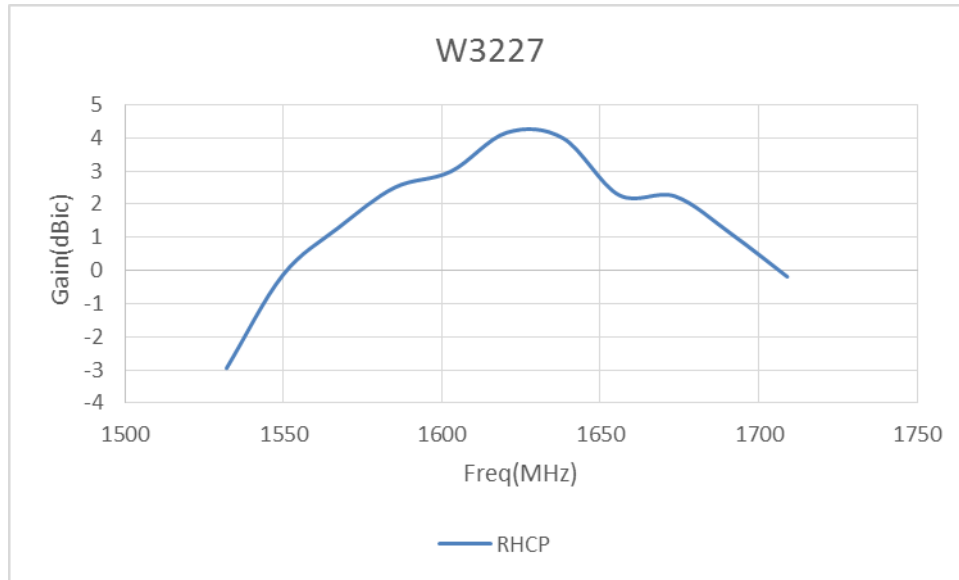
**Description:** Ceramic Patch Antenna, 40x40x6.6mm  
PIN Mount, GNSS/IRIDIUM

**Series:** Patch Antenna

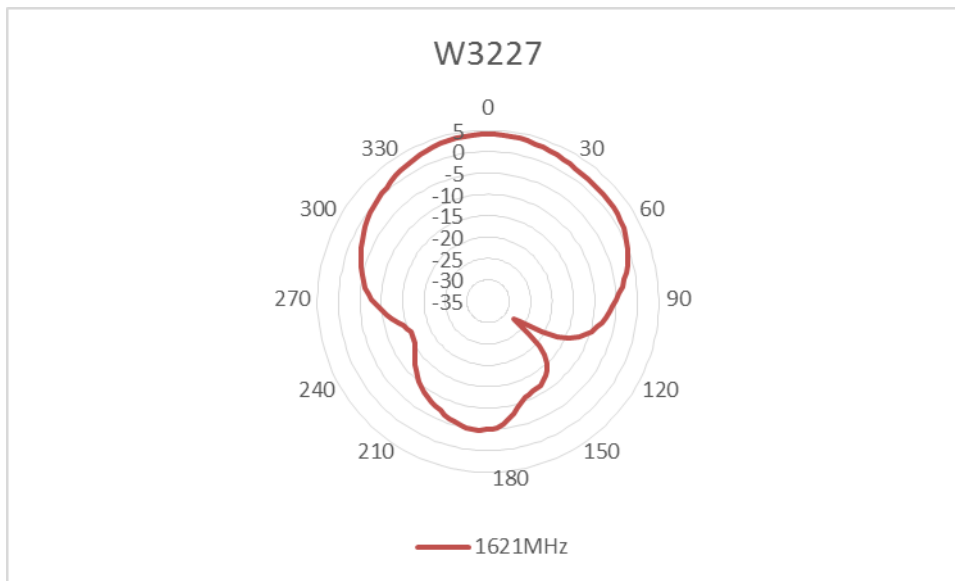
**PART NUMBER:** W3227

CHARTS

RHCP Gain at Zenith



Radiation Pattern



Issue: 1721

In the effort to improve our products, we reserve the right to make changes judged to be necessary.

CONFIDENTIAL AND PROPRIETARY INFORMATION

This document contains confidential and proprietary information of Pulse Electronics, Inc. (Pulse) and is protected by copyright, trade secret and other state and federal laws. Its receipt or possession does not convey any rights to reproduce, disclose its contents, or to manufacture, use or sell anything it may describe. Reproduction, disclosure or use without specific written authorization of Pulse is strictly forbidden.

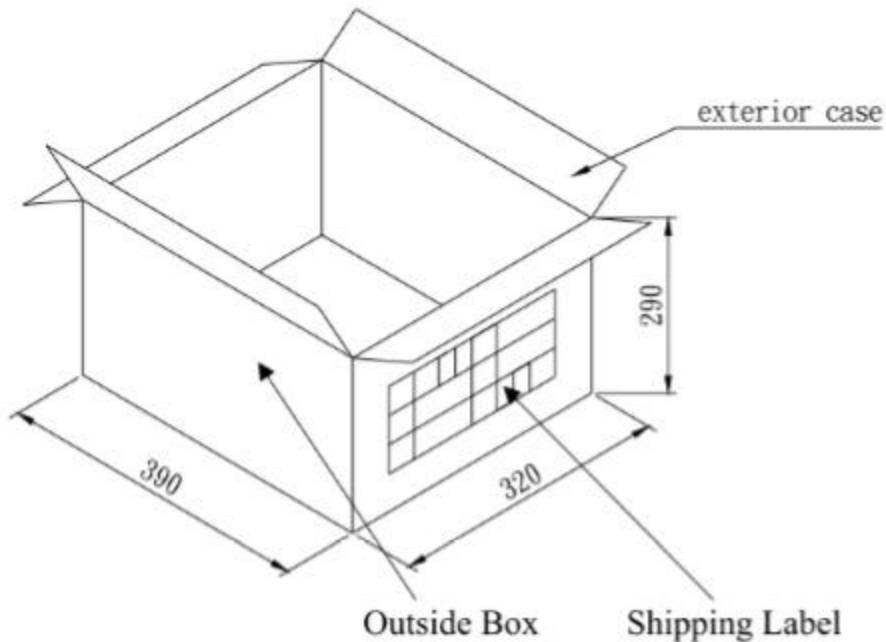
**Description:** Ceramic Patch Antenna, 40x40x6.6mm  
PIN Mount, GNSS/IRIDIUM

**Series:** Patch Antenna

**PART NUMBER:** W3227

## PACKAGING

Pack 42 Antennae in Tray, 29 Tray in one box



Issue: 1721

In the effort to improve our products, we reserve the right to make changes judged to be necessary.

CONFIDENTIAL AND PROPRIETARY INFORMATION

This document contains confidential and proprietary information of Pulse Electronics, Inc. (Pulse) and is protected by copyright, trade secret and other state and federal laws. Its receipt or possession does not convey any rights to reproduce, disclose its contents, or to manufacture, use or sell anything it may describe. Reproduction, disclosure or use without specific written authorization of Pulse is strictly forbidden.