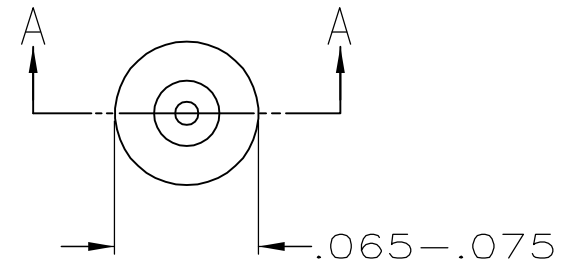
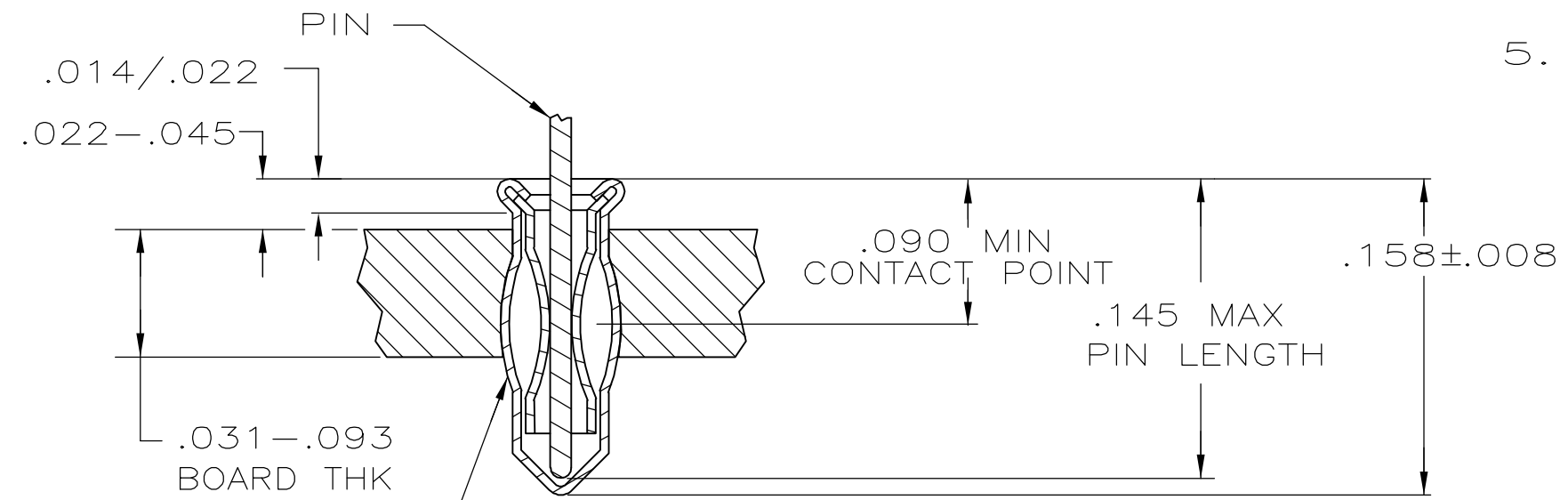


THIS DRAWING IS UNPUBLISHED. RELEASED FOR PUBLICATION
 © COPYRIGHT - BY TYCO ELECTRONICS CORPORATION. ALL RIGHTS RESERVED.

| LOC | DIST | REVISIONS | | | | | |
|-----|------|-----------|-----|---------------------------|---------|-----|------|
| AG | 53 | P | LTR | DESCRIPTION | DATE | DWN | APVD |
| | | | A | REVISED PER ECO-06-001742 | 31JAN06 | JDP | JGH |



- MATERIAL:
 EYELET - COPPER PER ASTM B 152
 SPRING - BERYLLIUM COPPER PER ASTM B 194
- TIN PLATE PER ASTM B 545 .000100 MIN THICK.
- GOLD PLATE PER ASTM B 488 .000030 MIN THICK OVER NICKEL PER QQ-N-290 ON CONTACT AREA.
- TO INSURE 1/2 OZ MIN RETENTION DO NOT EXCEED .004 DIFFERENCE IN PIN DIA WHEN CHANGING TO A SMALLER DIA PIN
- HOLE SIZE FOR HAND INSERTION .053-.055



INSERTION MACHINE CAPABLE OF OVALIZING SOCKET FOR RETENTION IN PC BOARD WITH .052±.003 DIA HOLE PRIOR TO SOLDERING OPERATION

SECTION A-A

| | | | | |
|-----------|-------------------|--------------------|-------------------|-----------|
| .090/.145 | .014/.022 | GOLD $\triangle 3$ | TIN $\triangle 2$ | 5645951-5 |
| | .020/.026 | TIN $\triangle 2$ | | 5645951-2 |
| LENGTH | DIA $\triangle 4$ | SPRING | EYELET | 5645951-1 |
| PIN | | FINISH | | PART NO |

| | | | | |
|----------------------------------------|----------------------------------------|---------------------------------------|-----------------------------------------------------------|---------------|
| THIS DRAWING IS A CONTROLLED DOCUMENT. | | DWN L. VARELA - DOCK5 19APR2005 | Tyco Electronics Corporation Harrisburg, PA 17105-3608 | |
| DIMENSIONS: INCHES | TOLERANCES UNLESS OTHERWISE SPECIFIED: | CHK J. HAVENER 19APR2005 | NAME MINIATURE SPRING SOCKET ASSEMBLY SERIES 2 SHORT | |
| | 0 PLC ± - | APVD J. HAVENER 19APR2005 | PRODUCT SPEC 108-14008 | |
| | 1 PLC ± - | | APPLICATION SPEC 114-13152 | |
| MATERIAL | FINISH | WEIGHT | SIZE | CAGE CODE |
| NOTE 1 | SEE TABLE | - | A3 | 00779 |
| CUSTOMER DRAWING | | | DRAWING NO | RESTRICTED TO |
| | | | C=5645951 | - |
| | | | SCALE | SHEET |
| | | | NTS | 1 OF 1 |
| | | | REV | A |