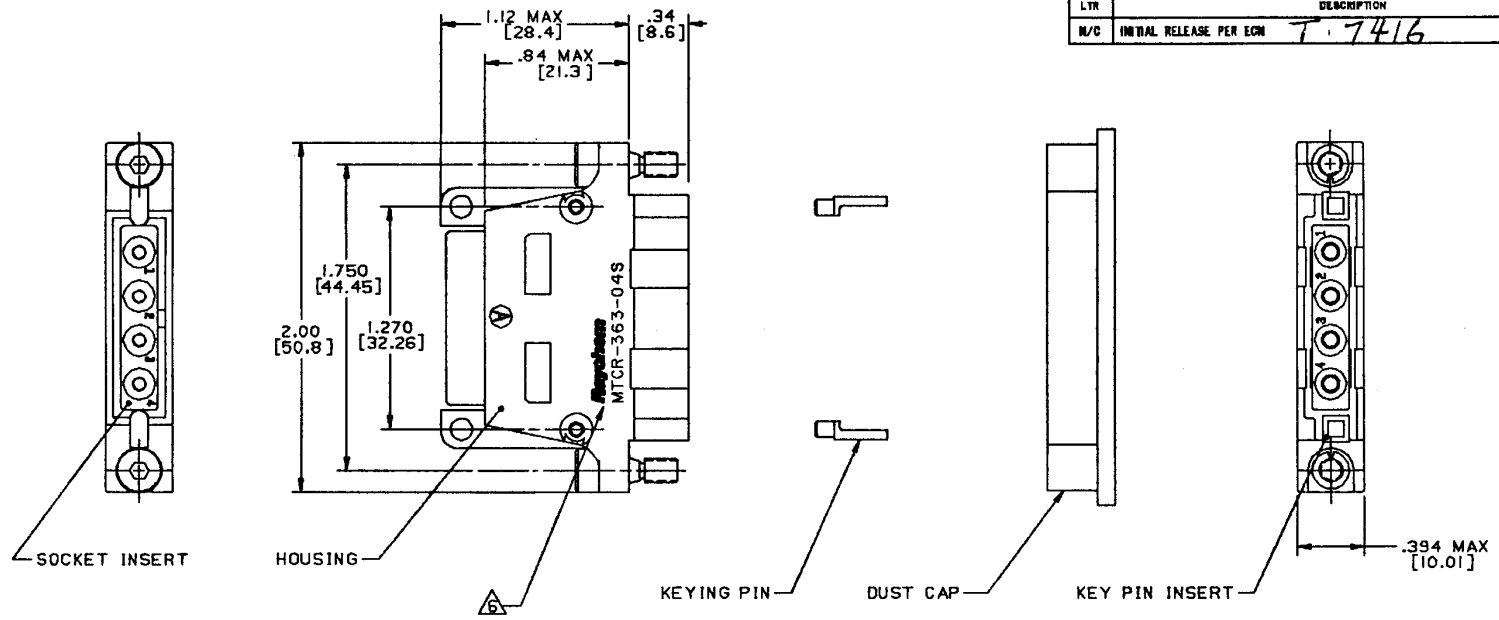


REVISIONS			
LTR	DESCRIPTION	DATE	APPROVED
M/C	INITIAL RELEASE PER ECR	T-7416	12-3-86 JS



NOTES:

1. THIS PART IS DESIGNED TO MEET THE REQUIREMENTS OF RAYCHEM SPECIFICATION C-6115. QUALIFICATION IS PENDING.
2. MATERIAL: MATERIALS ARE IN ACCORDANCE WITH RAYCHEM SPECIFICATION C-6115.
3. FINISH: FINISHES ARE IN ACCORDANCE WITH RAYCHEM SPECIFICATION C-6115.
4. FOR MOUNTING / MATING AND KEYING INFORMATION, SEE RAYCHEM DRAWING D652-0012
5. DUST CAP SUPPLIED INSTALLED WITH EACH RECEPTACLE
6. RAYCHEM, PART NO. MTCR-363-04S, AND DATE CODE ARE STAMPED APPROXIMATELY AS SHOWN.
7. CONNECTOR ACCOMODATES CONTACTS PER TABLE I.
8. INSERT IS PERMANENTLY INSTALLED.
9. CONTACTS ARE INSERTED AND REMOVED USING TOOL NUMBER M81969/14-04.
10. UNUSED CAVITIES ARE TO BE SEALED USING SEALING PLUG NUMBER MS27488-12.
11. TOLERANCES: UNLESS OTHERWISE SPECIFIED
 .XXX ± .005 [±.13]
 .XX ± .02 [±.5]

13. WEIGHT: .044 lbs [19.96 g]

If this document is printed it becomes uncontrolled.
 Check with the web for latest revision.

SOCKET CONTACT AND TOOLING INFORMATION

CONTACT TYPE	MILITARY PART NO.	WIRE STRIP LENGTH	TERMINATION TOOL
SHIELDED CONTACT FOR COAX CABLE D-602-0107 OR D-602-0095		SEE DRAWING D-602-0107 OR D-602-0095	SEE DRAWING D-602-0107 OR D-602-0095
CONTACT FOR TWISTED PAIR D-602-0105		SEE DRAWING D-602-0105	SEE DRAWING D-602-0105
POWER CONTACT SIZE 12	M39029/5-12-12	1/4" TO 5/16"	M22520/1-01 POSITIONER M22520/1-02

SPECIFICATION CONTROL DRAWING © Raychem Corporation 1985

DRAWN	D.J.K.	11-24-86	Raychem	RAYCHEM CORPORATION 300 CONSTITUTION DRIVE MENLO PARK, CALIFORNIA 94025	
CHECKED	B			CONNECTOR, PLUG, 1" CADMIUM PLATED, FIXED SOCKET INSERT EME CLASS, MTC SERIES	
APPROVED	<i>Blair</i>	11-25-86			
APPROVED	<i>Kumar</i>	12-4-86			
UNLESS OTHERWISE SPECIFIED DIMENSIONS ARE IN INCHES. METRIC DIMENSIONS ARE IN PARENTHESIS			SIZE	CODE IDENT. NO.	DWS NO.
DO NOT SCALE THIS DRAWING			C	06090	MTCR-363-04S
			WEIGHT	SHEET 1 OF 1	