

Customer Information Sheet

DRAWING No.: S481-46

SHEET 3 OF 3

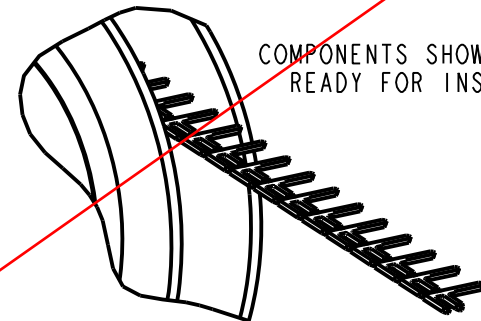
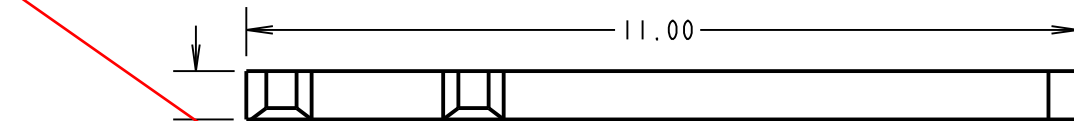
IF IN DOUBT - ASK

©

NOT TO SCALE

THIRD ANGLE PROJECTION

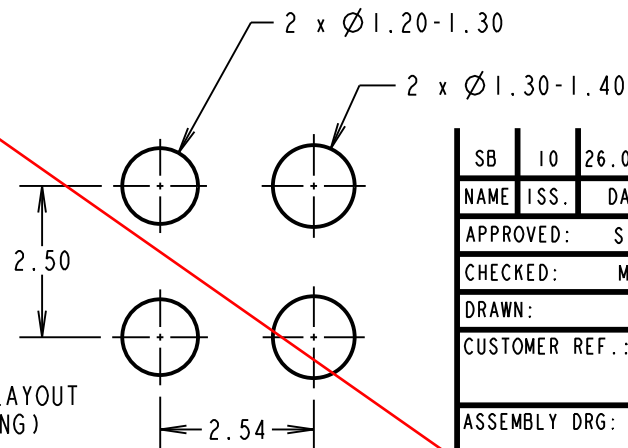
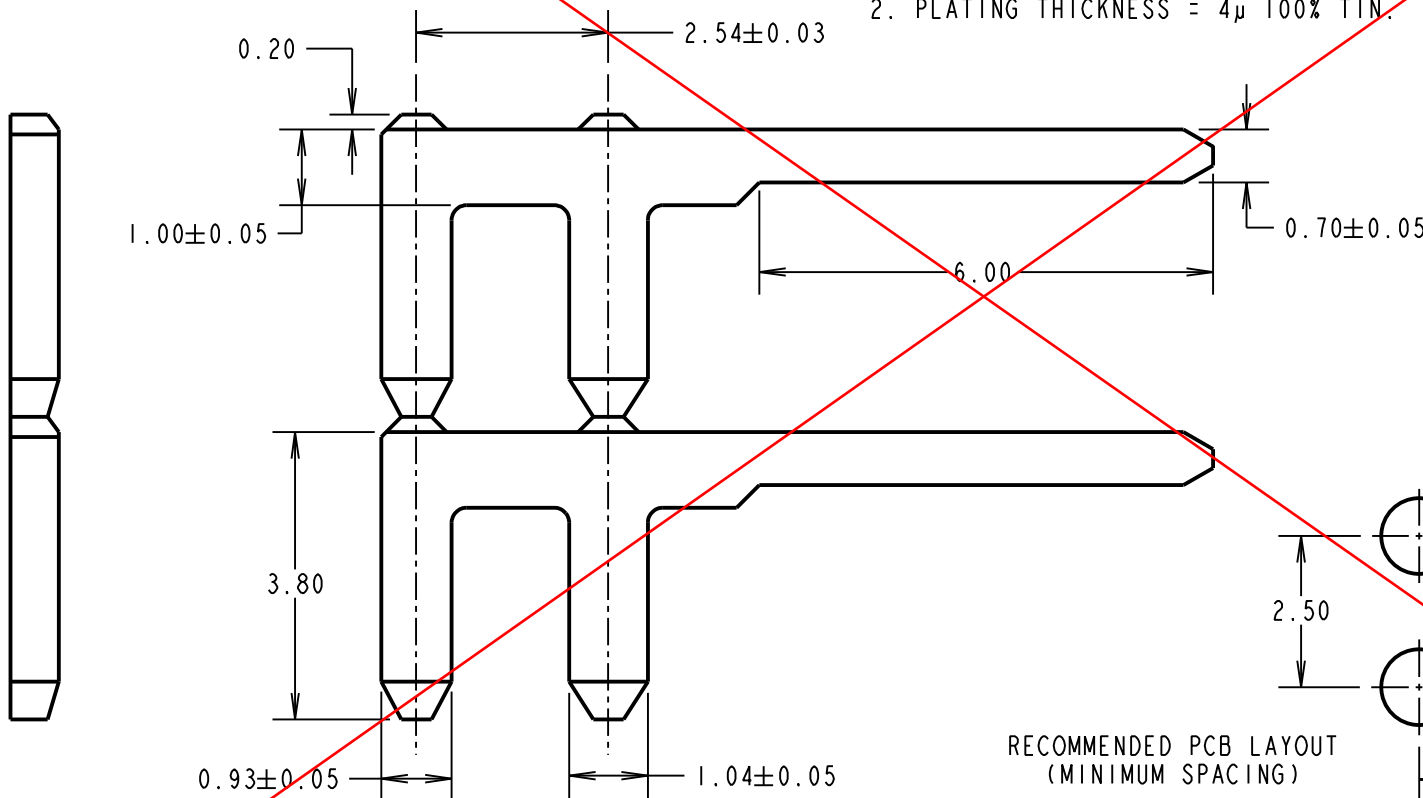
ALL DIMENSIONS IN mm



NOTES:

1. QUANTITY OF TABS PER REEL = 50K.
TOTAL WEIGHT PER REEL = 6.7kg
(INCLUDING REEL).
2. PLATING THICKNESS = 4µ 100% TIN.

OBSOLETE



RECOMMENDED PCB LAYOUT
(MINIMUM SPACING)

SB	10	26.05.16	13384
NAME	ISS.	DATE	C/NOTE
APPROVED:		S.BENNETT	
CHECKED:		M.PERREN	
DRAWN:		A.J.F	
CUSTOMER REF.:			
ASSEMBLY DRG:			

HARWIN

www.harwin.com
technical@harwin.com

THIS DRAWING AND ANY INFORMATION OR DESCRIPTIVE MATTER SET OUT HEREON ARE CONFIDENTIAL AND COPYRIGHT PROPERTY OF THE HARWIN GROUP AND MUST NOT BE DISCLOSED, LOANED, COPIED OR USED FOR MANUFACTURING, TENDERING OR FOR ANY OTHER PURPOSE WITHOUT THEIR WRITTEN PERMISSION.

TOLERANCES
X. = ±1mm
X.X = ±0.50mm
X.XX = ±0.10mm
X.XXX = ±0.01mm
ANGLES = ±5°
UNLESS STATED

MATERIAL:
BRASS CW508L H150
TO BS EN 1652
(CuZn37 HARD)

FINISH: SEE NOTES

S/AREA: mm²

TITLE:
HORIZONTAL REELED
POST TERMINAL

DRAWING NUMBER:
S481-46

SHT
3 OF 3