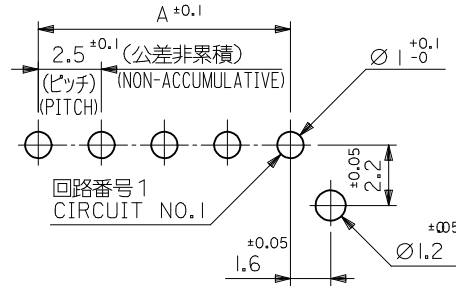
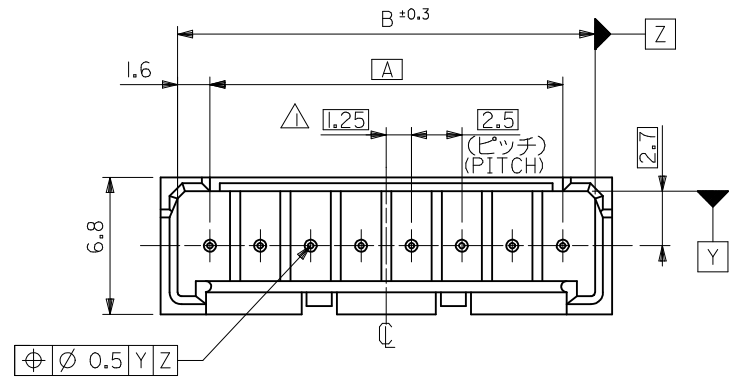
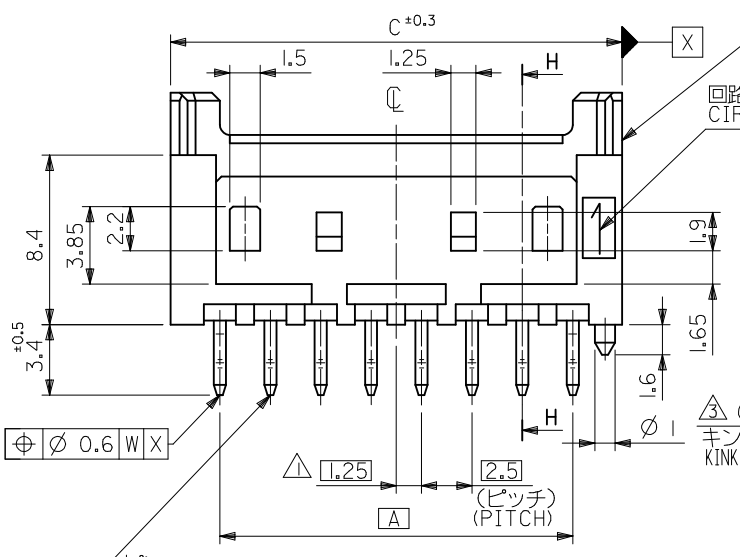


注記
NOTES

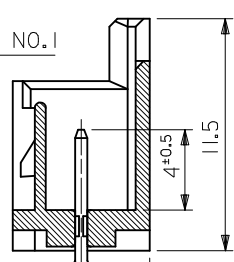
- △ 偶数極品に適用。
APPLIES ONLY TO EVEN NO. CKT. SIZES.
- 2. 嵌合相手：51103 シリーズ
MATES WITH：51103 SERIES.
- △ 3極以上のキンク形状は両サイドが(A)、その他の極はすべて(B)形状とする。
KINK FORM
MORE THAN 2 CIRCUIT:
PINS AT BOTH ENDS ARE KINK FORMED TO (A),
THE OTHER PINS ARE KINK FORMED TO (B).
- 4. 製品番号の下1桁は色を表します。
LAST DIGIT OF PART NUMBER INDICATES COLOR.
0:白 WHITE 1:黒 BLACK 2:赤 RED
3:黄 YELLOW 4:青 BLUE
- 5. 材料 ウエハー：PBTP(15%G.F.)，UL94V-0
WEFER
ピン：リン青銅 錫メッキ 1.0μm以上
下地銅メッキ 0.5μm以上
PIN: PHOSPHOR BRONZE,
TIN 1.0 micrometer MINMUM
OVER COPPER 0.5 micrometer MINIMUM
PLATING.



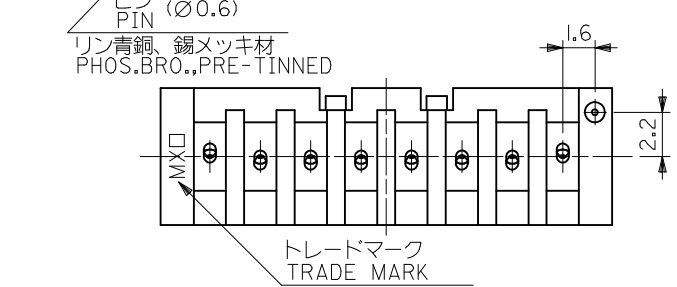
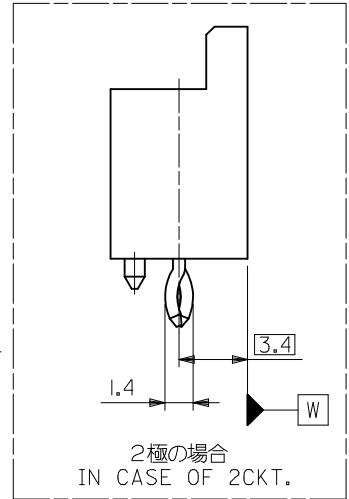
基板取付穴推奨寸法 (マウント面)
RECOMMENDED P.C.BOARD HOLE DIMENSION
(MOUNTING SIDE)
($t=1.6$) (SCALE 5 : 1)



ウエハー
WAFER
PBTP(15%G.F.)，UL94V-0
回路番号1
CIRCUIT NO.1

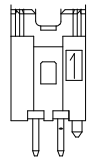


断面 H-H
SECT. H-H

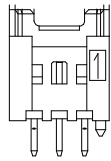


| | | | | |
|------|------|------|---|-----------------------|
| 39.9 | 38.2 | 35 | 53375-15 * | 15 |
| 37.4 | 35.7 | 32.5 | ↑ -14 * | 14 |
| 34.9 | 33.2 | 30 | -13 * | 13 |
| 32.4 | 30.7 | 27.5 | -12 * | 12 |
| 29.9 | 28.2 | 25 | -11 * | 11 |
| 27.4 | 25.7 | 22.5 | -10 * | 10 |
| 24.9 | 23.2 | 20 | -09 * | 9 |
| 22.4 | 20.7 | 17.5 | -08 * | 8 |
| 19.9 | 18.2 | 15 | -07 * | 7 |
| 17.4 | 15.7 | 12.5 | -06 * | 6 |
| 14.9 | 13.2 | 10 | -05 * | 5 |
| 12.4 | 10.7 | 7.5 | -04 * | 4 |
| 9.9 | 8.2 | 5 | -03 * | 3 |
| 7.4 | 5.7 | 2.5 | 53375-02 * | 2 |
| C | B | A | POLY BAG PACKAGE ORDER NO. MODEL NO. 53375-xx * | 極数 NO. OF CKTS. |

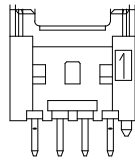
| | | | | | | | |
|--|-------------|--|-------|----------------------------|--|------------------------|---|
| REVISED EC NO: J2013-1080 2013/04/01 DRWNR:HORI CHKD:KASAKAWA 2013/04/01 APPR:Y010 2013/04/01 | DESCRIPTION | GENERAL TOLERANCES (UNLESS SPECIFIED) | | DIMENSION STYLE MM ONLY | SCALE 4:1 | DESIGN UNITS METRIC | TITLE 2.5 W/B CONN WAFER ASSY WITH KINK -LEAD FREE- molex DOCUMENT NO. SD-53375-001 SHEET NO. 1 OF 2 |
| | | 10 UNDER | ±0.2 | DRAWN BY K. TOJO | DATE 1992/05/06 | THIRD ANGLE PROJECTION | |
| | | 10 OVER 30 UNDER | ±0.25 | CHECKED BY H. HIRAMOTO | DATE 1994/03/08 | | |
| | | 30 OVER | ±0.3 | APPROVED BY M. FUKUSUMA | DATE 1994/03/08 | | |
| | | ANGULAR | ±3 ° | MATERIAL NO. | | | |
| | | DRAFT WHERE APPLICABLE MUST REMAIN WITHIN DIMENSIONS | | SIZE A3 | THIS DRAWING CONTAINS INFORMATION THAT IS PROPRIETARY TO MOLEX INCORPORATED AND SHOULD NOT BE USED WITHOUT WRITTEN PERMISSION | | |



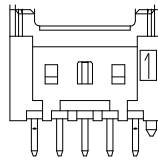
2極
2 CKT.



3極
3 CKT.



4極
4 CKT.



5極
5 CKT.

ロック形状図
LOCK CONFIGURATION

| | | | | |
|----------------------------|------------------------------|---------------------------|----------------------------|------|
| 53375-1514 | 53375-1513 | | 53375-1510 | 15 |
| | | | 53375-1410 | 14 |
| | | | 53375-1310 | 13 |
| 53375-1214 | 53375-1213 | | 53375-1210 | 12 |
| | | | 53375-1110 | 11 |
| | | | 53375-1010 | 10 |
| | | | 53375-0910 | 9 |
| 53375-0814 | | 53375-0812 | 53375-0810 | 8 |
| | | 53375-0712 | 53375-0710 | 7 |
| 53375-0614 | 53375-0613 | 53375-0612 | 53375-0610 | 6 |
| | | 53375-0512 | 53375-0510 | 5 |
| | | | 53375-0410 | 4 |
| | | | 53375-0310 | 3 |
| 53375-0214 | 53375-0213 | 53375-0212 | 53375-0210 | 2 |
| 53375-**14 COLOR : BLUE | 53375-**13 COLOR : YELLOW | 53375-**12 COLOR : RED | 53375**10 COLOR : WHITE | CKT. |
| TRAY PACKAGE ORDER No. | | | | |

| | | | | | | | | |
|--|---------------------------------------|---|----------------------------|------------------------------|--|------------------------|------------------------|--|
| REVISED EC NO: J2013-1080 2013/04/01 DRWNR:HORI 2013/04/01 CHKD:KASAKAWA 2013/04/01 APPR:YOKO 2013/04/01 | GENERAL TOLERANCES (UNLESS SPECIFIED) | | DIMENSION STYLE MM ONLY | | SCALE 4:1 | DESIGN UNITS METRIC | THIRD ANGLE PROJECTION | |
| | 10 UNDER | ±0.2 | DRAWN BY K. TOJO | DATE 1992/05/06 | TITLE 2.5 W/B CONN WAFER ASSY WITH KINK -LEAD FREE- molex | | | |
| | 10 OVER 30 UNDER | ±0.25 | CHECKED BY H. HIRAMOTO | DATE 1994/03/08 | | | | |
| | 30 OVER | ±0.3 | APPROVED BY M. FUKUSUMA | DATE 1994/03/08 | | | | |
| ANGULAR ±3 ° | | MATERIAL NO. SEE TABLE | | DOCUMENT NO. SD-53375-001 | | SHEET NO. 2 OF 2 | | |
| DRAFT WHERE APPLICABLE MUST REMAIN WITHIN DIMENSIONS | | THIS DRAWING CONTAINS INFORMATION THAT IS PROPRIETARY TO MOLEX INCORPORATED AND SHOULD NOT BE USED WITHOUT WRITTEN PERMISSION | | | | | | |