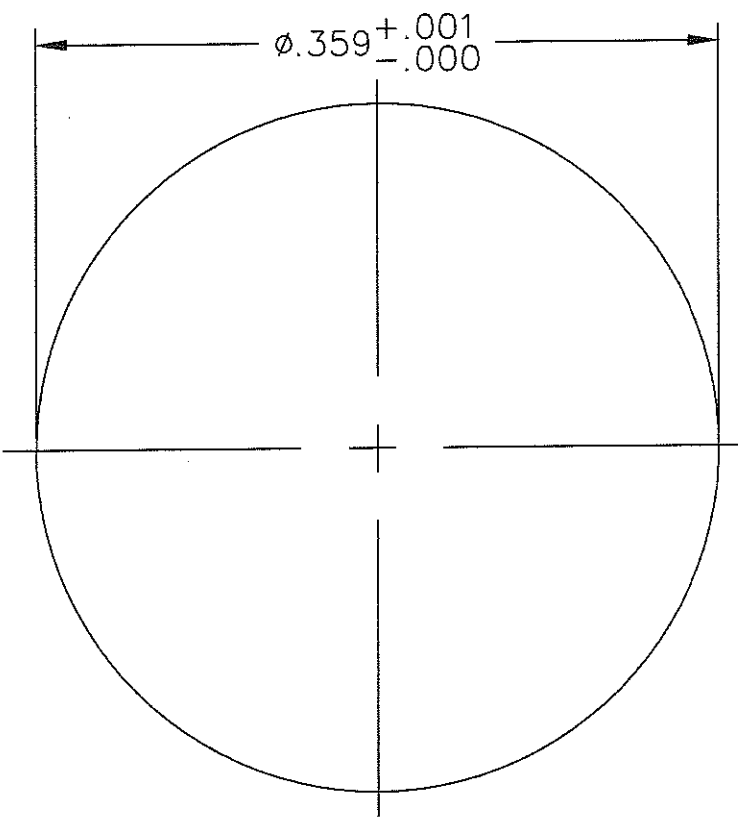
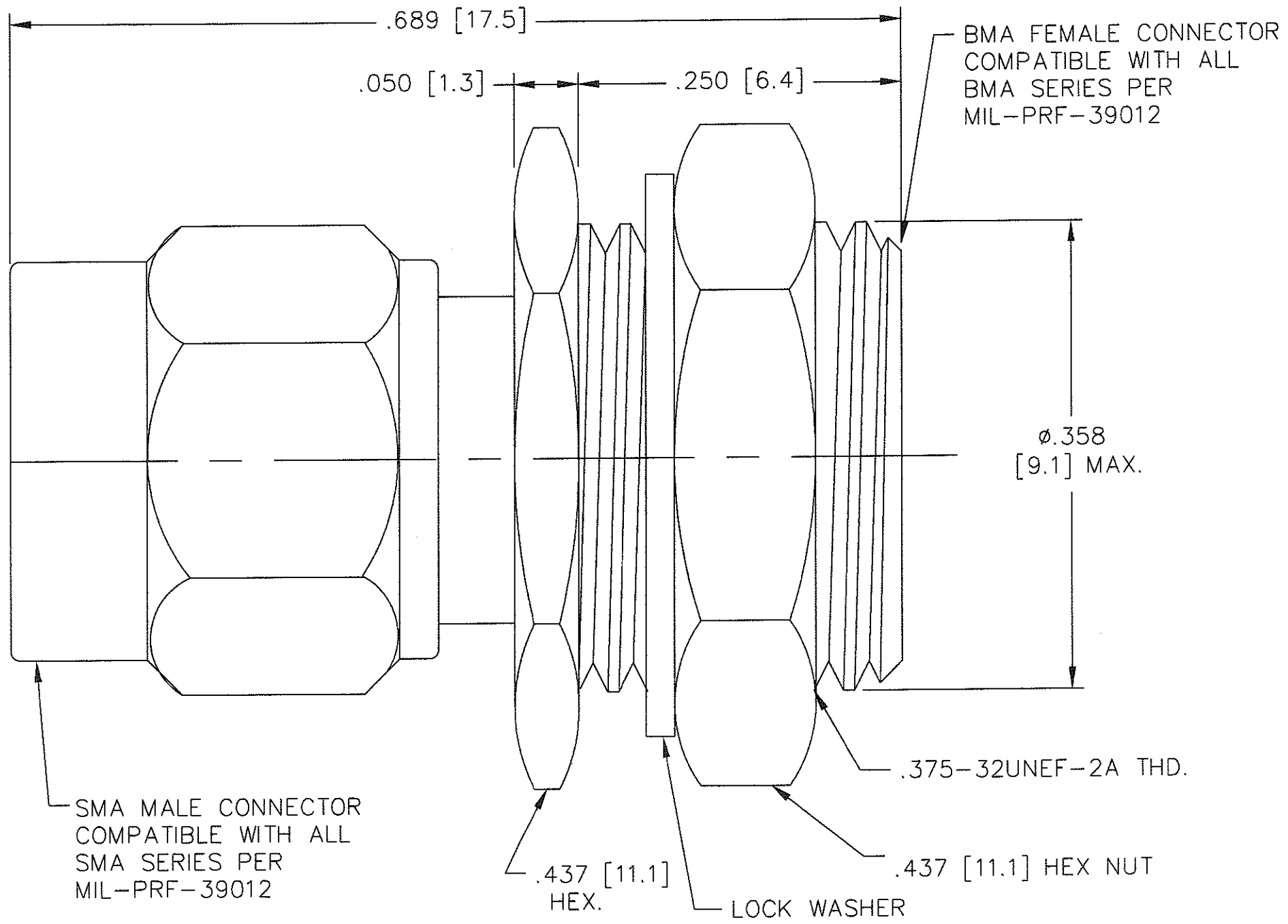


- NOTES:
- 1.0 MATERIAL:
 - 1.1 HOUSING, NUTS AND WASHER: STAINLESS STEEL PER QQ-S-764 AND ASTM-A-582, TYPE 303.
 - 1.2 DIELECTRIC: PTFE FLUOROCARBON PER ASTM-B194.
 - 1.3 CENTER CONTACT AND EXTENSION: BERYLLIUM COPPER ROD ALLOY C172, PER ASTM-D1457.
 - 2.0 PLATING:
 - 2.1 HOUSING, NUTS AND WASHER: PASSIVATED PER QQ-P-35 AND MIL-F-14072.
 - 2.2 CENTER CONTACT AND EXTENSION: GOLD PER MIL-G-45204, TYPE II, CLASS 1.
 - 3.0 MECHANICAL:
 - 3.1 INTERFACES PER MIL-STD-348A.
 - 3.2 CENTER CONTACT CAPTURED.
 - 4.0 ELECTRICAL:
 - 4.1 FREQUENCY RANGE: DC to 18.0 GHz
 - 4.2 MAX V.S.W.R.: $1.05 + .005f(\text{GHz})$
 - 4.3 NOMINAL IMPEDANCE: 50 OHMS
 - 5.0 DIMENSIONS IN BRACKETS ARE IN MILLIMETERS.



MOUNTING HOLE

UNLESS OTHERWISE NOTED DIMENSIONS ARE IN INCHES AND TOLERANCES ARE:		FSCM NO. 34078		MIDWEST MICROWAVE	
3 PLACE DECIMALS $\pm .005$		NOTICE: The information contained in this drawing is proprietary and must not be used without the permission of Midwest Microwave		TITLE ADAPTER - SMA MALE TO BMA FEMALE BULKHEAD OUTLINE	
2 PLACE DECIMALS $\pm .02$				DRAWING NUMBER ADT-2807-SM-BMF-02	
FRACTIONS $\pm 1/64$		DRAWN/DATE S. ORLOV 8/9/02	ENG./DATE C. 8/9/02	SCALE: 10=1	
PARALLELITY: T.I.R. _____		CHECKED/DATE	APPROVED/DATE	SHEET 1 of 1	
FLATNESS: T.I.R. _____		ANGLES AND PERPENDICULARITY: $\pm 1^\circ$			
CONCENTRICITY: T.I.R. _____					

REV.	DESCRIPTION	DATE
-	RELEASED	8/9/02