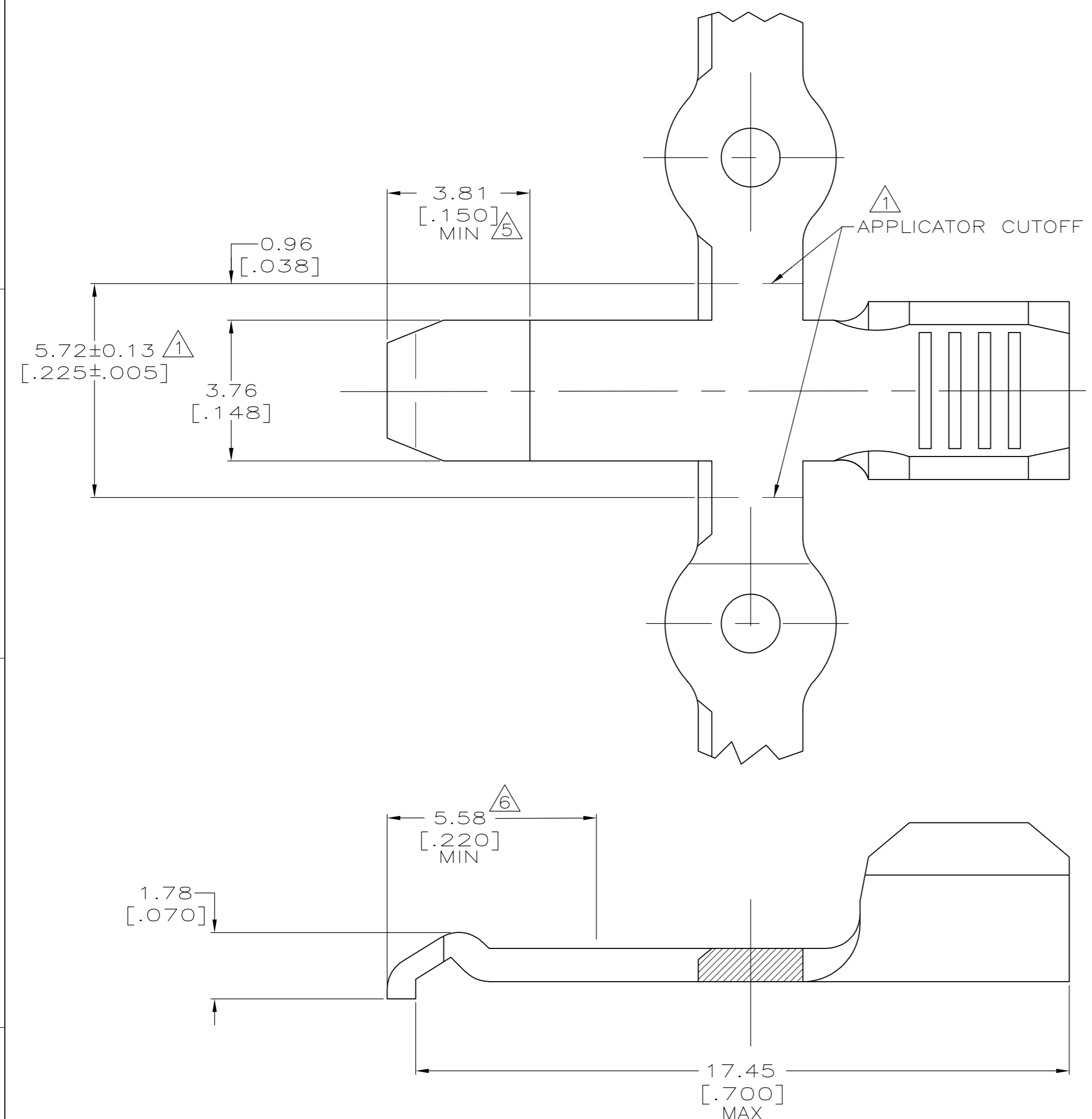
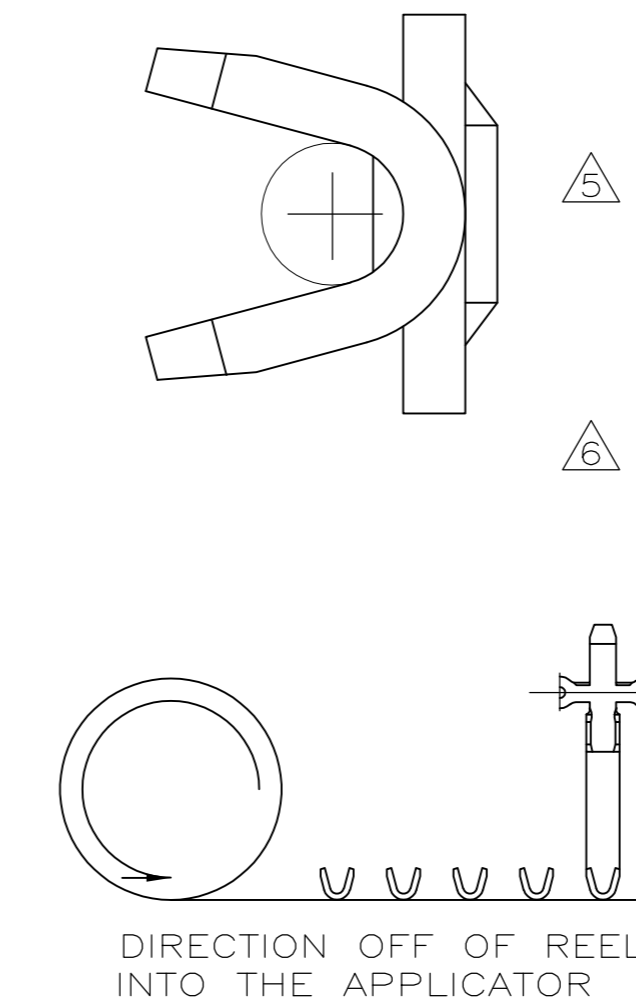


LOC	DIST	REVISIONS					
FT	60	P	LTR	DESCRIPTION	DATE	OWN	APVD
		M1		REVISED PER ECO-11-004820	11MAR11	RK	HMR



- ① REFER TO AMP INSTRUCTION SHEET IS 2928 FOR APPLICATOR AND CUTOFF DETAILS.
- ② MATERIAL: COPPER
- ③ FINISH: 0.05 [.000200] MINIMUM THICK SILVER PLATING.
- ④ FINISH: 0.00076 [.000030] MINIMUM THICK GOLD PLATING OVER 0.00127 [.000050] MINIMUM THICK NICKEL PLATING.
- ⑤ FINISH: 0.00076 [.000030] MINIMUM THICK GOLD PLATING OVER TOP SURFACE INDICATED AND GOLD FLASH OVER REMAINING SURFACES OVER 0.00127 [.000050] MINIMUM NICKEL PLATING.
- ⑥ TOP SURFACE IS GRAPHITE COATED IN AREA INDICATED.



SCALE: NONE

SUPERSEDED BY -2	③ ⑥	STRIP	1-53892-1
	⑤	STRIP	53892-8
	④	LOOSE PIECE	53892-7
	③	LOOSE PIECE	53892-4
	③	STRIP	53892-2
		FINISH	DESCRIPTION
			PART NO

THIS DRAWING IS A CONTROLLED DOCUMENT.		DWN	K TILLMAN/UTA	3-21-94	<b>STE</b> TE Connectivity
DIMENSIONS: MM [INCHES]		CHK	D. HUSSEY	3-23-94	
TOLERANCES UNLESS OTHERWISE SPECIFIED:		APVD	D. KEMPKA	3-23-94	NAME
0 PLC	± -	PRODUCT SPEC		108-11026	CONTACT, CRIMP BARREL, SERIES 1, POWER LOCK
1 PLC	± -	APPLICATION SPEC		114-6032	
2 PLC	± 0.20 [.008]	WEIGHT		-	SIZE
3 PLC	± -	CUSTOMER DRAWING		SCALE 10:1	CAGE CODE
4 PLC	± - 5°	FINISH		SEE TABLE	DRAWING NO
ANGLES	± - 5°	MATERIAL		②	00779
		FINISH		SEE TABLE	53892
		MATERIAL		②	RESTRICTED TO
		FINISH		SEE TABLE	1 of 1
		MATERIAL		②	REV M1