

4

3

2

1

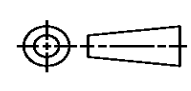
THIS DRAWING IS UNPUBLISHED. RELEASED FOR PUBLICATION
 © COPYRIGHT ALL RIGHTS RESERVED.

LOC	DIST	REVISIONS			
P	LTR	DESCRIPTION	DATE	DWN	APVD
	L1	ECR-14-003111	03MAR2014	GK	HMR

REPLACED BY OCEAN STYLE APPLICATOR PART NUMBER 2151060-1

FOR REPLACEMENT PARTS FOR APPLICATOR 1528101
 REFER TO ADDITIONAL PAGE(S). SPARE PARTS KIT (IF LISTED)
 WILL REMAIN AVAILABLE.

THE REPLACEMENT OCEAN STYLE APPLICATOR HAS THE
 SAME TERMINATOR/PRESS INTERFACE AS APPLICATOR
 1528101

THIS DRAWING IS A CONTROLLED DOCUMENT.		DWN	GOPALAKRISHNA HV		
DIMENSIONS:		CHK	RAGHAVENDRA		
		APVD	RAGHAVENDRA		
TOLERANCES UNLESS OTHERWISE SPECIFIED:		PRODUCT SPEC	NAME		
0 PLC	±	APPLICATION SPEC	FINE ADJ SIDE FD HD-I APPL		
1 PLC	±		SIZE	CAGE CODE	DRAWING NO
2 PLC	±		A3		©- 1528101
3 PLC	±				RESTRICTED TO
4 PLC	±				
ANGLES	±	WEIGHT			
MATERIAL	FINISH	CUSTOMER DRAWING	SCALE	SHEET 1 OF 2	REV L1

THIS DRAWING IS UNPUBLISHED. RELEASED FOR PUBLICATION
 BY TYCO ELECTRONICS CORPORATION. ALL RIGHTS RESERVED.

REV	DATE	DESCRIPTION	DATE	BY	APP'D
A	66	ECR-11-019491	22SEP2011	LZ	SX

PART NUMBER	REV	FIRST USED	TERMINATOR	FEED TYPE	DESCRIPTION
1528101-1	L	-	LEADMAKER	MECH POST FEED	CUTS CARRIER
1528101-2	L	-	BENCH	MECH PRE FEED	CUTS CARRIER
1528101-6	L	-	LEADMAKER	MECH POST FEED	CONTINUOUS CARRIER
7-1528101-1	L	-	LEADMAKER	MECH POST FEED	-1 AND SPARE PARTS
7-1528101-2	L	-	BENCH	MECH PRE FEED	-2 AND SPARE PARTS
7-1528101-6	L	-	LEADMAKER	MECH POST FEED	-6 AND SPARE PARTS
7-1528101-7	J	-	-	-	SPARE PARTS KIT

CRIMP DATA (AMP TERMINAL)

TERMINAL NAME: JUNIOR POWER TIMER CONTACT A

CRIMP	SIZE	TYPE	RANGE
WIRE	2.03 [.080 IN]	F	0.50mm ² - 1.00mm ²
INSUL	4.06 [.160 IN]	0	1.40-2.70 [.055-.106 IN]

WIRE STRIP LENGTH: 4.20-4.80 [.165-.189 IN] APPL INSTRUCTION: 408-8322 & 408-8490

TERMINAL	SEAL	FEED
114-18051 (B)	114-18387 (C)	14.00 [.551 IN]
APPL SPEC 114-18050 (A)	-	-

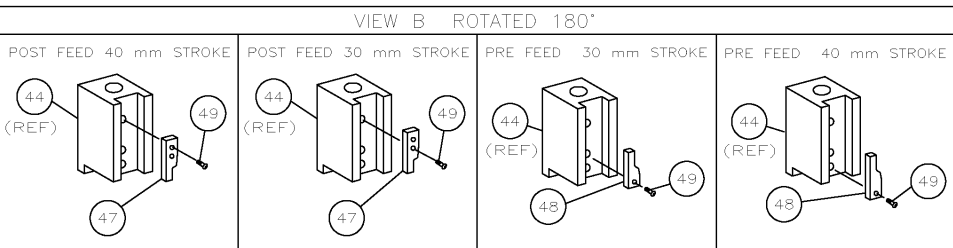
TERMINALS APPLIED

TERMINAL	SEAL	FEED
964286 (A)	963294-1	-
964300 (B)	963293-1	-
1241394 (C)	-	-

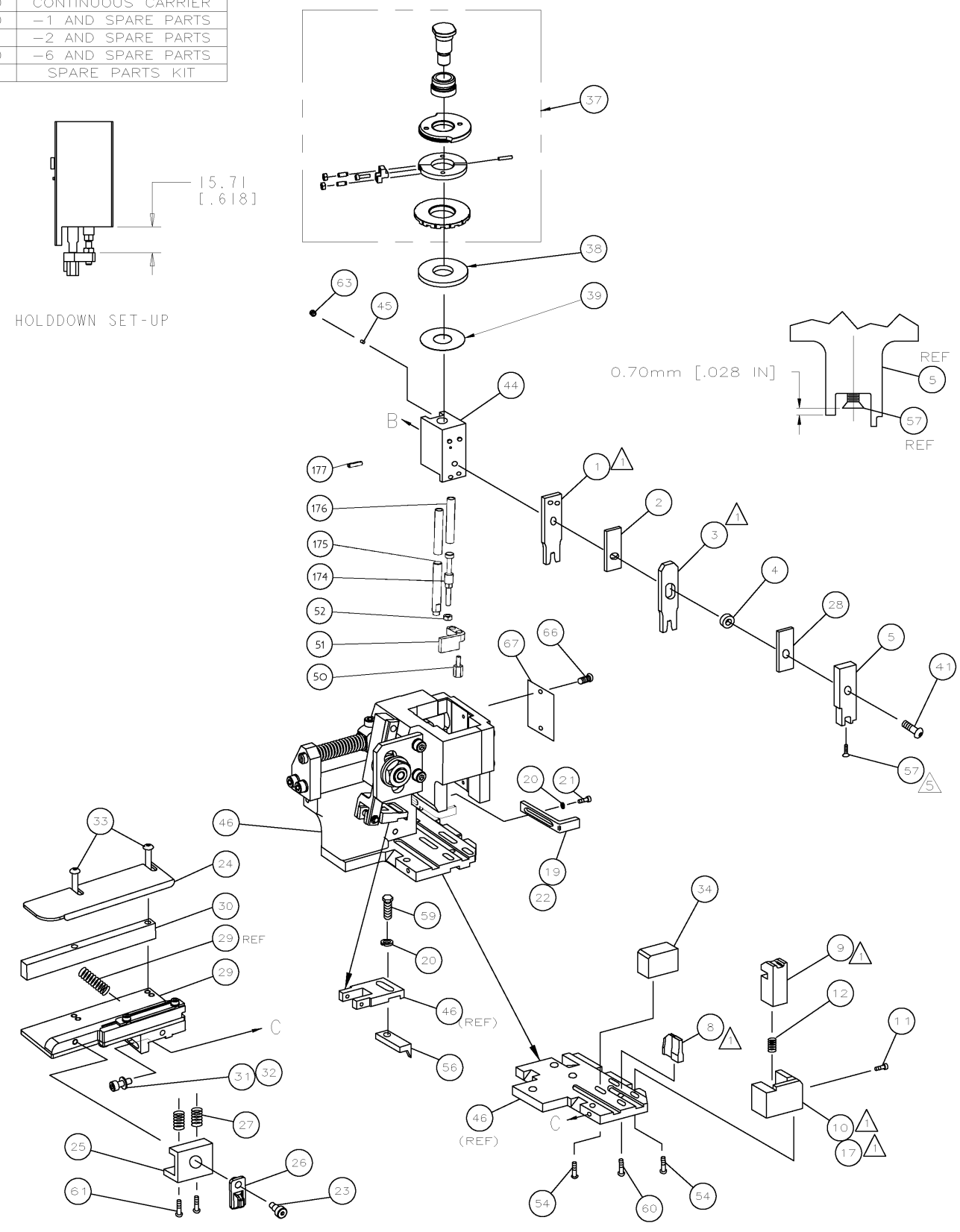
WIRE SIZE mm ² awg	CRIMP HEIGHT *	REF SETTING *
1.00mm ²	1.20 ±0.05 [.047 ±0.002 IN]	B 3
0.75mm ²	1.18 ±0.05 [.046 ±0.002 IN]	C 1
0.50mm ²	1.15 ±0.05 [.045 ±0.002 IN]	C 8

SET UP GAGE	LAYOUT
458637-3	L1426005

- △ RECOMMENDED SPARE PARTS.
- 2. GREASE RAM, CAM, CAM FOLLOWER AND FEED ROD LIGHTLY.
- 3. LUBRICATE DAILY PER THE APPLICATOR INSTRUCTION SHEET SUPPLIED WITH THE APPLICATOR.
- 4. THIS APPLICATOR APPLIES TERMINAL WITH A SEAL.
- 5. APPLY TORO-SEAL IN ALLEN SOCKET TO FILL HOLE AFTER FLAT HD HAS BEEN ADJUSTED TO CORRECT HEIGHT AT QUALIFICATION. APPLY #1-23419-5 LOC-TITE TO THREADS.
- △ FEED MAY REQUIRE ADJUSTMENT WHEN CHANGING FROM ONE TERMINAL TO ANOTHER.



*** WARNING:**
 ON INSTALLATION, SET WIRE DISC TO LARGEST WIRE SIZE SETTING. USE OF SETTINGS BELOW MIN REQ'D CRIMP HEIGHT SETTING WILL CAUSE DAMAGE TO CRIMP TOOLING.



QTY	REQD	PER	ASSY	PART NO	DESCRIPTION	ITEM NO		
-	1	1	1	1	1	993111-8	PIN, SLOTTED SPRING 3.0X12.0	177
-	2	2	2	2	2	3-22280-7	SPRING, COMPRESSION	176
-	1	1	1	1	1	1752353-1	GUIDE PIN, HOLD DOWN	175
-	1	1	1	1	1	1901680-1	GUIDE PIN, HOLD DOWN	174
-	1	1	1	1	1	1528101	PRINT, APPLICATOR LOG SHEET	72
-	1	1	1	1	1	1338705-3	DOCUMENTATION PACKAGE	71
-	1	1	1	1	1	461264-5	PLATE, IDENTIFICATION	67
-	2	2	2	2	2	21017-2	SCR_DRIVE(#2x.19)ID PLATE	66
-	-	-	-	-	-	-	-	65
-	-	-	-	-	-	-	-	64
-	1	1	1	1	1	3-18031-0	SCR_SKT_SET(M6X6 LW)RAM	63
-	-	-	-	-	-	-	-	62
-	2	2	2	2	2	2-18032-5	SCR_SET(M5X20)DRAG	61
-	1	1	1	1	1	18024-7	SCR_BHC(M4X10)ANVIL	60
-	1	1	1	1	1	5-18022-2	SCR_HEX(M4X8)FEED FINGER	59
-	-	-	-	-	-	-	-	58
-	1	1	1	1	1	985575-3	SCR_FHC(M3X10)DEP	57
-	1	1	1	1	1	1338685-1	PAWL, FEED	56
-	-	-	-	-	-	-	-	55
-	4	4	4	4	4	18024-8	SCR_BHC(M4X12)SHEAR HOLDER	54
-	-	-	-	-	-	-	-	53
-	1	1	1	1	1	1-18030-0	NUT, HEX, REG M3.5	52
-	1	1	1	1	1	1901681-1	HOLD DOWN, TERMINAL	51
-	1	1	1	1	1	2-1752354-7	STANDOFF, HOLD-DOWN	50
-	1	1	1	1	1	18024-3	SCR_BHC(M3X10)CAM	49
-	-	-	-	-	-	-	-	48
-	1	-	1	-	-	1338675-1	CAM, PRE FEED 30 & 40 mm ST	47
-	1	-	1	-	-	1338676-1	CAM, POST FEED 30 & 40 mm ST	46
-	1	1	1	1	1	1320999-3	APPLICATOR BASIC SUBASSY	45
-	1	1	1	1	1	690191-1	PLUG, NYLON	44
-	1	1	1	1	1	1633724-1	RAM	43
-	-	-	-	-	-	-	-	42
-	1	1	1	1	1	2-18024-6	SCR_BHC(M8X25)RAM	41
-	-	-	-	-	-	-	-	40
-	1	1	1	1	1	690125-1	SHIM SUBASSY	39
-	1	1	1	1	1	469367-9	SPACER, FINE ADJUST	38
-	1	1	1	1	1	879103-2	FINE ADJUST HEAD SUBASSY	37
-	-	-	-	-	-	-	-	36
-	-	-	-	-	-	-	-	35
-	1	1	1	1	1	1-1752356-6	SUPPORT, TERMINAL	34
-	2	2	2	2	2	1-18024-0	SCR_BHC(M4X20)STRIP GUIDE	33
-	1	1	1	1	1	18027-2	WASHER, FLAT(M4)	32
-	1	1	1	1	1	1-18023-2	SCR_SKT_CAP(M4X12)MOUNT BLOCK	31
-	1	1	1	1	1	1320908-8	SPACER, STRIP GUIDE	30
-	1	1	1	1	1	1633073-2	STRIP GUIDE PLATE ASSY	29
-	1	1	1	1	1	1-455888-6	SPACER, FRONT SHEAR DEP	28
-	2	2	2	2	2	1-22284-0	SPRING, DRAG	27
-	1	1	1	1	1	356835-1	LEVER, DRAG RELEASE	26
-	1	1	1	1	1	240792-1	DRAG, TERMINAL	25
-	1	1	1	1	1	1320928-1	GUIDE, STRIP (REAR)	24
-	1	1	1	1	1	980371-4	SCR_SHC SHLD	23
-	1	-	1	-	-	690472-2	STRIPPER	22
-	1	1	1	1	1	1-18023-1	SCR_SHC(M4X10)STRIPPER	21
-	2	2	2	2	2	18025-2	WASHER_LOCK(M4)STRIPPER	20
-	-	-	-	-	-	-	-	19
-	-	-	-	-	-	-	-	18
-	1	-	-	-	-	1338684-2	HOLDER, SHEAR, FRONT (NO-CUT)	17
-	-	-	-	-	-	-	-	16
-	-	-	-	-	-	-	-	15
-	-	-	-	-	-	-	-	14
-	-	-	-	-	-	-	-	13
-	1	1	1	1	1	3-22280-3	SPRING, SHEAR	12
-	1	1	1	1	1	356885-5	STOP, SHEAR	11
-	-	1	-	-	-	1-1320921-0	HOLDER, SHEAR, FRONT (CUT)	10
-	1	1	1	1	1	318707-1	SHEAR, FLOAT (FRONT)	9
-	1	2	2	2	1	1333204-4	ANVIL	8
-	-	-	-	-	-	-	-	7
-	-	-	-	-	-	-	-	6
-	1	1	1	1	1	1338680-1	DEPRESSOR, SHEAR (FRONT)	5
-	1	1	1	1	1	3-238011-3	SPACER, BLOCK CRIMPER	4
-	1	2	2	2	1	1583690-9	CRIMPER, INSULATION	3
-	1	1	1	1	1	455888-5	SPACER, CRIMPER	2
-	1	2	2	1	1	1-456405-7	CRIMPER, WIRE	1

DIMENSIONS:		TOLERANCES UNLESS OTHERWISE SPECIFIED:	
INCHES	0 PLC	± .005	
	1 PLC	± .010	
	2 PLC	± .015	
	3 PLC	± .020	
	4 PLC	± .030	
	ANGLES	± .005	

DRW: M. CLIFFORD 22APR02
 CHK: F. BACKHURST 23APR02
 NAME: TE CONNECTIVITY
 SIZE: A1
 CAGE CODE: 00779
 DRAWING NO: 1528101
 SHEET 1 OF 1