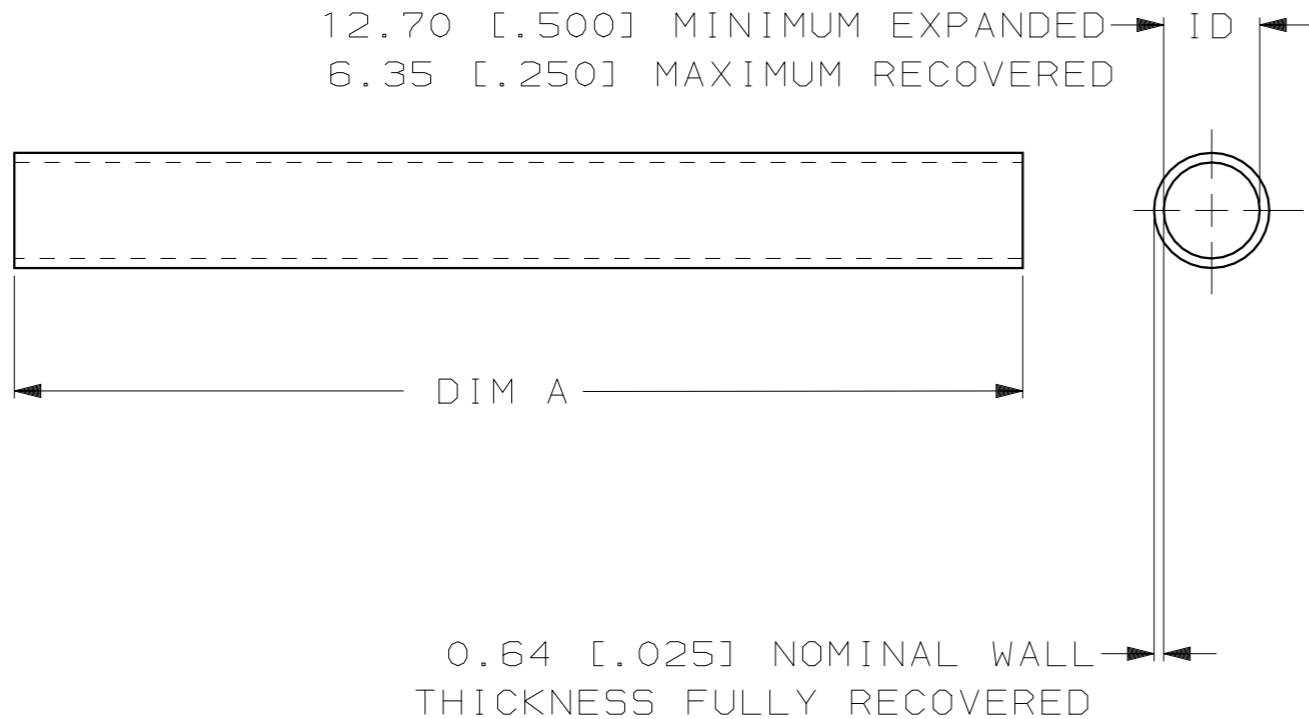


THIS DRAWING IS UNPUBLISHED. RELEASED FOR PUBLICATION, 19 .
 © COPYRIGHT 19 BY AMP INCORPORATED. ALL INTERNATIONAL RIGHTS RESERVED.

LOC	DIST	P	F	ZONE	LTR	DESCRIPTION	DATE	APPD
FI	25				H	OBS: -8; EC ON20-0023-96	20AUG96	D5 EH



- TUBING MEETS REQUIREMENTS OF MIL-I-23053/5-208-C.
- WEIGHT PER LINEAR FOOT/304.8 mm: 3.456 GRAMS/.0076 POUND.

60.96m [200 FEET] MINIMUM		603347-2	
1219.2 ±12.7 [48.00 ±.50]		603347-1	
DIM A (LENGTH)		PART NO	
DO NOT SCALE PRINT. UNLESS SPECIFIED DIMENSIONS IN mm [INCHES] TOLERANCES ON: 2 PLC DEC ± - 3 PLC DEC ± - ANGLES ± -	DR 7-18-94 W CHANDLER	AMP Incorporated Harrisburg, PA 17105-3608	
	CHK 10-13-94 D HUSSEY		
MATERIAL CLEAR POLYOLEFIN	APPD 10-13-94 D KAAT	NAME AMPSULATION FP21, 1/2 INCH ID, CLEAR	
	APPD 10-13-94 F HARNED		
FINISH -	PRODUCT SPEC -	SIZE B	CAGE CODE 00779
	APPLICATION SPEC -	DRAWING NO C-603347	
	WEIGHT	SCALE NONE	SHEET 1 OF 1

THIS DRAWING IS A CONTROLLED DOCUMENT FOR AMP INCORPORATED. IT IS SUBJECT TO CHANGE AND THE CONTROLLING ENGINEERING ORGANIZATION SHOULD BE CONTACTED FOR THE LATEST REVISION.