

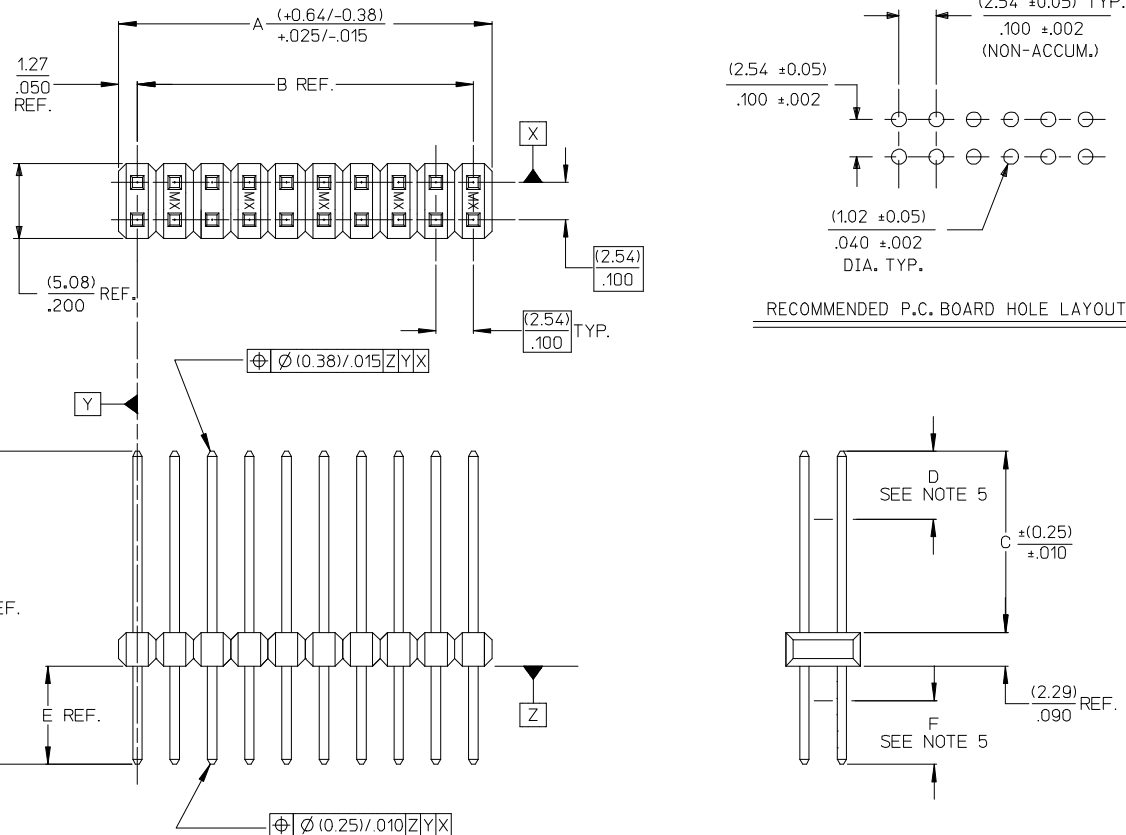
CKT. SIZE	DIM. A REF.		DIM. B REF.		
	(MM)	INCH	(MM)	INCH	
J	4	(5.08)	.200	(2.54)	.100
	6	(7.62)	.300	(5.08)	.200
	8	(10.16)	.400	(7.62)	.300
	10	(12.70)	.500	(10.16)	.400
	12	(15.24)	.600	(12.70)	.500
	14	(17.78)	.700	(15.24)	.600
I	16	(20.32)	.800	(17.78)	.700
	18	(22.86)	.900	(20.32)	.800
	20	(25.40)	1.000	(22.86)	.900
	22	(27.94)	1.100	(25.40)	1.000
	24	(30.48)	1.200	(27.94)	1.100
	26	(33.02)	1.300	(30.48)	1.200
	28	(35.56)	1.400	(33.02)	1.300
H	30	(38.10)	1.500	(35.56)	1.400
	32	(40.64)	1.600	(38.10)	1.500
	34	(43.18)	1.700	(40.64)	1.600
	36	(45.72)	1.800	(43.18)	1.700
	38	(48.26)	1.900	(45.72)	1.800
	40	(50.80)	2.000	(48.26)	1.900
G	42	(53.34)	2.100	(50.80)	2.000
	44	(55.88)	2.200	(53.34)	2.100
	46	(58.42)	2.300	(55.88)	2.200
	48	(60.96)	2.400	(58.42)	2.300
	50	(63.50)	2.500	(60.96)	2.400
	52	(66.04)	2.600	(63.50)	2.500
	54	(68.58)	2.700	(66.04)	2.600
F	56	(71.12)	2.800	(68.58)	2.700
	58	(73.66)	2.900	(71.12)	2.800
	60	(76.20)	3.000	(73.66)	2.900
	62	(78.74)	3.100	(76.20)	3.000
	64	(81.28)	3.200	(78.74)	3.100
	66	(83.82)	3.300	(81.28)	3.200
E	68	(86.36)	3.400	(83.82)	3.300
	70	(88.90)	3.500	(86.36)	3.400
	72	(91.44)	3.600	(88.90)	3.500
	74	(93.98)	3.700	(91.44)	3.600
	76	(96.52)	3.800	(93.98)	3.700
	78	(99.06)	3.900	(96.52)	3.800
D	80	(101.06)	4.000	(99.06)	3.900
	82	(104.14)	4.100	(101.06)	4.000
	84	(106.68)	4.200	(104.14)	4.100
	86	(109.22)	4.300	(106.68)	4.200
	88	(111.76)	4.400	(109.22)	4.300
	90	(114.30)	4.500	(111.76)	4.400
	92	(116.84)	4.600	(114.30)	4.500
C	94	(119.38)	4.700	(116.84)	4.600
	96	(121.92)	4.800	(119.38)	4.700
	98	(124.46)	4.900	(121.92)	4.800
	100	(127.00)	5.000	(124.46)	4.900

NOTES:

- MATERIAL:
PIN: COPPER ALLOY
WAFER: GLASS FILLED LCP (LIQUID CRYSTAL POLYMER, UL 94V-0, COLOR: BLACK).
- FINISH:
TIN = (0.00380)/.000150 MINIMUM TIN PLATE OVER (0.00127)/.000050 MINIMUM NICKEL PLATE.
15 GOLD = (0.00038)/.000015 MINIMUM GOLD PLATE IN SELECT AREA, (0.00190)/.000075 MINIMUM TIN PLATE IN SELECT AREA, OVER (0.00127)/.000050 MINIMUM NICKEL PLATE OVERALL.
30 GOLD = (0.00076)/.000030 MINIMUM GOLD PLATE IN SELECT AREA, (0.00190)/.000075 MINIMUM TIN PLATE IN SELECT AREA, OVER (0.00127)/.000050 MINIMUM NICKEL PLATE OVERALL.
GT15 = (0.00038)/.000015 MINIMUM GOLD PLATE IN SELECT AREA, (0.00254)/.000100 MINIMUM TIN PLATE IN SELECT AREA, OVER (0.00127)/.000050 MINIMUM NICKEL PLATE OVERALL.

- PRODUCT SPECIFICATION NONE
- PACKAGING INFORMATION: (UNLESS OTHERWISE NOTED IN TABLES) BULK PACK PER PK-70873-0353.
- MEASURE POINT FOR PLATING THICKNESS.
- FOR ASSEMBLIES WITH VOIDED PINS, REFER TO DRAWING NO. SDA-70280-5001-9999.
- PIN PUSHOUT FORCE 3 POUNDS MINIMUM IN EITHER DIRECTION.
- FOR ILLUSTRATION PURPOSES, 20 (DUAL 10) CIRCUIT SIZE IS SHOWN.
- PINS MEET SOLDERABILITY SPEC SMES-152. ABSENCE OF PLATING PERMISSIBLE AT BANDOLIER PIN FAYING SURFACE. (APPROXIMATELY (0.64)/.025 INCH LONG BY (0.15)/.006 INCH WIDE AT 2 LOCATIONS)
- PARTS CONFORM TO CLASS B OF COSMETIC SPECIFICATION PS-45499-002

* THE PRIMARY SHIPPING CARTON WILL BE LABELED "COMPLIANT TO RoHS DIRECTIVE 2002/95/EC AND ELV ANNEX II OF DIRECTIVE 2000/53/EC". CARTONS WITHOUT THIS LABEL MAY CONTAIN PRODUCT WITH LEAD PLATING.



ADD P/N 70280-1254 EC NO: UCP2008-2306 DRWN: J.BELL CHKD: LSCMIDT APPR: FSM/TH	2008/03/31 2008/04/07 2008/04/24	DESCRIPTION	QUALITY SYMBOLS ▽=0 ▽=0	GENERAL TOLERANCES (UNLESS SPECIFIED)		DIMENSION STYLE MM/IN		SCALE 4:1	DESIGN UNITS INCH	THIRD ANGLE PROJECTION
				± mm	± INCH	DRAWN BY SMR	DATE 04/19/1993	TITLE SALES ASSY-HIGH TEMP. DUAL ROW WAFER W/BREAK-OFF OPT. .025 SQ PINS		
DRAFT WHERE APPLICABLE MUST REMAIN WITHIN DIMENSIONS				4 PLACES ± --- ± ---		CHECKED BY		DATE		MOLEX INCORPORATED
				3 PLACES ± --- ± .005		DATE				
G6				2 PLACES ± 0.13 ± .01		APPROVED BY SMR		DATE 04/19/1993		SHEET NO. 1 OF 9
				1 PLACE ± 0.25 ± ---		DATE				
G6				ANGULAR ± 1/2°		MATERIAL NO.		DOCUMENT NO.		SALES ASSY-HIGH TEMP. SDA-70280-0001-4000
				SEE TABLE		DATE				
G6				ANGULAR ± 1/2°		MATERIAL NO.		DOCUMENT NO.		SALES ASSY-HIGH TEMP. SDA-70280-0001-4000
				SEE TABLE		DATE				
G6				ANGULAR ± 1/2°		MATERIAL NO.		DOCUMENT NO.		SALES ASSY-HIGH TEMP. SDA-70280-0001-4000
				SEE TABLE		DATE				
G6				ANGULAR ± 1/2°		MATERIAL NO.		DOCUMENT NO.		SALES ASSY-HIGH TEMP. SDA-70280-0001-4000
				SEE TABLE		DATE				
G6				ANGULAR ± 1/2°		MATERIAL NO.		DOCUMENT NO.		SALES ASSY-HIGH TEMP. SDA-70280-0001-4000
				SEE TABLE		DATE				
G6				ANGULAR ± 1/2°		MATERIAL NO.		DOCUMENT NO.		SALES ASSY-HIGH TEMP. SDA-70280-0001-4000
				SEE TABLE		DATE				

J	13	12	11	10	9	8	7	6	5	4	3	2	1	J		
	ENGINEERING NUMBER A-70280-	RELEASE FOR MANUFACTURE					E REF.	J REF.	C (0.25) ±.010	CONNECTOR END PLATING			P.C. BOARD END PLATING		FOR PACKAGING INFORMATION. SEE NOTE 4, SHEET 1 (UNLESS OTHERWISE SPECIFIED BELOW)	
			TYPE	D MEAS.	TYPE	F MEAS.										
	-0629/-0668	R.F.M.			(4.45) .175	(12.83) .505	(6.10) .240		15 GOLD	(2.54) .100	TIN	(1.27) .050				
	-0669/-0708	R.F.M.			(4.45) .175	(12.83) .505	(6.10) .240		30 GOLD	(2.54) .100	TIN	(1.27) .050				
I	-0709/-0748	R.F.M.			(4.70) .185	(15.11) .595	(8.13) .320		TIN	(4.57) .180	TIN	(1.27) .050		I		
	-0749/-0788	R.F.M.			(4.70) .185	(15.11) .595	(8.13) .320		15 GOLD	(4.57) .180	TIN	(1.27) .050				
	-0789/-0828	R.F.M.			(4.70) .185	(15.11) .595	(8.13) .320		30 GOLD	(4.57) .180	TIN	(1.27) .050				
H	-0829/-0868	R.F.M.			(5.08) .200	(13.21) .520	(5.84) .230		TIN	(2.54) .100	TIN	(1.27) .050		H		

G	CKTS	EDP NUMBER	ENG NUMBER	EDP NUMBER	ENG NUMBER	EDP NUMBER	ENG NUMBER	EDP NUMBER	ENG NUMBER	EDP NUMBER	ENG NUMBER	EDP NUMBER	ENG NUMBER	EDP NUMBER	ENG NUMBER	CKTS
		N/A	A-70280-0629	N/A	A-70280-0669	N/A	A-70280-0709	N/A	A-70280-0749	N/A	A-70280-0789	N/A	A-70280-0829	EDP NUMBER	ENG NUMBER	
	04	70280-0630	A-70280-0630	70280-0670	A-70280-0670	70280-0710	A-70280-0710	70280-0750	A-70280-0750	70280-0790	A-70280-0790	70280-0830	A-70280-0830			04
	06	70280-0631	A-70280-0631	70280-0671	A-70280-0671	70280-0711	A-70280-0711	70280-0751	A-70280-0751	70280-0791	A-70280-0791	70280-0831	A-70280-0831			06
	08	70280-0632	A-70280-0632	70280-0672	A-70280-0672	70280-0712	A-70280-0712	70280-0752	A-70280-0752	70280-0792	A-70280-0792	70280-0832	A-70280-0832			08
	10	70280-0633	A-70280-0633	70280-0673	A-70280-0673	70280-0713	A-70280-0713	70280-0753	A-70280-0753	70280-0793	A-70280-0793	70280-0833	A-70280-0833			10
	12	70280-0634	A-70280-0634	70280-0674	A-70280-0674	70280-0714	A-70280-0714	70280-0754	A-70280-0754	70280-0794	A-70280-0794	70280-0834	A-70280-0834			12
	14	70280-0635	A-70280-0635	70280-0675	A-70280-0675	70280-0715	A-70280-0715	70280-0755	A-70280-0755	70280-0795	A-70280-0795	70280-0835	A-70280-0835			14
	16	70280-0636	A-70280-0636	70280-0676	A-70280-0676	70280-0716	A-70280-0716	70280-0756	A-70280-0756	70280-0796	A-70280-0796	70280-0836	A-70280-0836			16
	18	70280-0637	A-70280-0637	70280-0677	A-70280-0677	70280-0717	A-70280-0717	70280-0757	A-70280-0757	70280-0797	A-70280-0797	70280-0837	A-70280-0837			18
	20	70280-0638	A-70280-0638	70280-0678	A-70280-0678	70280-0718	A-70280-0718	70280-0758	A-70280-0758	70280-0798	A-70280-0798	70280-0838	A-70280-0838			20
	22	70280-0639	A-70280-0639	70280-0679	A-70280-0679	70280-0719	A-70280-0719	70280-0759	A-70280-0759	70280-0799	A-70280-0799	70280-0839	A-70280-0839			22
	24	70280-0640	A-70280-0640	70280-0680	A-70280-0680	70280-0720	A-70280-0720	70280-0760	A-70280-0760	70280-0800	A-70280-0800	70280-0840	A-70280-0840			24
F	26	70280-0641	A-70280-0641	70280-0681	A-70280-0681	70280-0721	A-70280-0721	70280-0761	A-70280-0761	70280-0801	A-70280-0801	70280-0841	A-70280-0841			26
	28	70280-0642	A-70280-0642	70280-0682	A-70280-0682	70280-0722	A-70280-0722	70280-0762	A-70280-0762	70280-0802	A-70280-0802	70280-0842	A-70280-0842			28
	30	70280-0643	A-70280-0643	70280-0683	A-70280-0683	70280-0723	A-70280-0723	70280-0763	A-70280-0763	70280-0803	A-70280-0803	70280-0843	A-70280-0843			30
	32	70280-0644	A-70280-0644	70280-0684	A-70280-0684	70280-0724	A-70280-0724	70280-0764	A-70280-0764	70280-0804	A-70280-0804	70280-0844	A-70280-0844			32
	34	70280-0645	A-70280-0645	70280-0685	A-70280-0685	70280-0725	A-70280-0725	70280-0765	A-70280-0765	70280-0805	A-70280-0805	70280-0845	A-70280-0845			34
	36	70280-0646	A-70280-0646	70280-0686	A-70280-0686	70280-0726	A-70280-0726	70280-0766	A-70280-0766	70280-0806	A-70280-0806	70280-0846	A-70280-0846			36
	38	70280-0647	A-70280-0647	70280-0687	A-70280-0687	70280-0727	A-70280-0727	70280-0767	A-70280-0767	70280-0807	A-70280-0807	70280-0847	A-70280-0847			38
E	40	70280-0648	A-70280-0648	70280-0688	A-70280-0688	70280-0728	A-70280-0728	70280-0768	A-70280-0768	70280-0808	A-70280-0808	70280-0848	A-70280-0848			40
	42	70280-0649	A-70280-0649	70280-0689	A-70280-0689	70280-0729	A-70280-0729	70280-0769	A-70280-0769	70280-0809	A-70280-0809	70280-0849	A-70280-0849			42
	44	70280-0650	A-70280-0650	70280-0690	A-70280-0690	70280-0730	A-70280-0730	70280-0770	A-70280-0770	70280-0810	A-70280-0810	70280-0850	A-70280-0850			44
	46	70280-0651	A-70280-0651	70280-0691	A-70280-0691	70280-0731	A-70280-0731	70280-0771	A-70280-0771	70280-0811	A-70280-0811	70280-0851	A-70280-0851			46
	48	70280-0652	A-70280-0652	70280-0692	A-70280-0692	70280-0732	A-70280-0732	70280-0772	A-70280-0772	70280-0812	A-70280-0812	70280-0852	A-70280-0852			48
	50	70280-0653	A-70280-0653	70280-0693	A-70280-0693	70280-0733	A-70280-0733	70280-0773	A-70280-0773	70280-0813	A-70280-0813	70280-0853	A-70280-0853			50
	52	70280-0654	A-70280-0654	70280-0694	A-70280-0694	70280-0734	A-70280-0734	70280-0774	A-70280-0774	70280-0814	A-70280-0814	70280-0854	A-70280-0854			52
	54	70280-0655	A-70280-0655	70280-0695	A-70280-0695	70280-0735	A-70280-0735	70280-0775	A-70280-0775	70280-0815	A-70280-0815	70280-0855	A-70280-0855			54
D	56	70280-0656	A-70280-0656	70280-0696	A-70280-0696	70280-0736	A-70280-0736	70280-0776	A-70280-0776	70280-0816	A-70280-0816	70280-0856	A-70280-0856			56
	58	70280-0657	A-70280-0657	70280-0697	A-70280-0697	70280-0737	A-70280-0737	70280-0777	A-70280-0777	70280-0817	A-70280-0817	70280-0857	A-70280-0857			58
	60	70280-0658	A-70280-0658	70280-0698	A-70280-0698	70280-0738	A-70280-0738	70280-0778	A-70280-0778	70280-0818	A-70280-0818	70280-0858	A-70280-0858			60
	62	70280-0659	A-70280-0659	70280-0699	A-70280-0699	70280-0739	A-70280-0739	70280-0779	A-70280-0779	70280-0819	A-70280-0819	70280-0859	A-70280-0859			62
	64	70280-0660	A-70280-0660	70280-0700	A-70280-0700	70280-0740	A-70280-0740	70280-0780	A-70280-0780	70280-0820	A-70280-0820	70280-0860	A-70280-0860			64
	66	70280-0661	A-70280-0661	70280-0701	A-70280-0701	70280-0741	A-70280-0741	70280-0781	A-70280-0781	70280-0821	A-70280-0821	70280-0861	A-70280-0861			66
	68	70280-0662	A-70280-0662	70280-0702	A-70280-0702	70280-0742	A-70280-0742	70280-0782	A-70280-0782	70280-0822	A-70280-0822	70280-0862	A-70280-0862			68
C	70	70280-0663	A-70280-0663	70280-0703	A-70280-0703	70280-0743	A-70280-0743	70280-0783	A-70280-0783	70280-0823	A-70280-0823	70280-0863	A-70280-0863			70
	72	70280-0664	A-70280-0664	70280-0704	A-70280-0704	70280-0744	A-70280-0744	70280-0784	A-70280-0784	70280-0824	A-70280-0824	70280-0864	A-70280-0864			72
	74	70280-0665	A-70280-0665	70280-0705	A-70280-0705	70280-0745	A-70280-0745	70280-0785	A-70280-0785	70280-0825	A-70280-0825	70280-0865	A-70280-0865			74
	76	70280-0666	A-70280-0666	70280-0706	A-70280-0706	70280-0746	A-70280-0746	70280-0786	A-70280-0786	70280-0826	A-70280-0826	70280-0866	A-70280-0866			76
	78	70280-0667	A-70280-0667	70280-0707	A-70280-0707	70280-0747	A-70280-0747	70280-0787	A-70280-0787	70280-0827	A-70280-0827	70280-0867	A-70280-0867			78
	80	70280-0668	A-70280-0668	70280-0708	A-70280-0708	70280-0748	A-70280-0748	70280-0788	A-70280-0788	70280-0828	A-70280-0828	70280-0868	A-70280-0868			80

B	<p>UPDATE DIMENSIONS EC NO: UCP2007-1440 DRAWN: P. DIER 2006/12/18 CHKD: A. RRR 2006/12/18 APPR: E. SM TH 2007/01/10</p>	<p>QUALITY SYMBOLS ▽=0 ▽=0</p>	<p>GENERAL TOLERANCES (UNLESS SPECIFIED)</p> <table border="1"> <tr> <th></th> <th>mm</th> <th>INCH</th> </tr> <tr> <td>4 PLACES</td> <td>± ---</td> <td>± ---</td> </tr> <tr> <td>3 PLACES</td> <td>± ---</td> <td>± ---</td> </tr> <tr> <td>2 PLACES</td> <td>± ---</td> <td>± ---</td> </tr> <tr> <td>1 PLACE</td> <td>± ---</td> <td>± ---</td> </tr> </table>		mm	INCH	4 PLACES	± ---	± ---	3 PLACES	± ---	± ---	2 PLACES	± ---	± ---	1 PLACE	± ---	± ---	<p>DIMENSION STYLE MM/IN</p>	<p>SCALE ---</p>	<p>DESIGN UNITS INCH</p>	<p>THIRD ANGLE PROJECTION</p>	<p>SALES ASSY-HIGH TEMP. DUAL ROW WAFER W/BREAK-OFF OPTION, .025 SQ PINS</p>	<p>MOLEX INCORPORATED</p>
					mm	INCH																		
4 PLACES	± ---	± ---																						
3 PLACES	± ---	± ---																						
2 PLACES	± ---	± ---																						
1 PLACE	± ---	± ---																						
<p>DRAFT WHERE APPLICABLE MUST REMAIN WITHIN DIMENSIONS</p>	<p>SEE CHART</p>	<p>DOCUMENT NO. SDA-70280-0001-4000</p>	<p>SHEET NO. 4 OF 8</p>																					
A	<p>THIS DRAWING CONTAINS INFORMATION THAT IS PROPRIETARY TO MOLEX INCORPORATED AND SHOULD NOT BE USED WITHOUT WRITTEN PERMISSION</p>																							