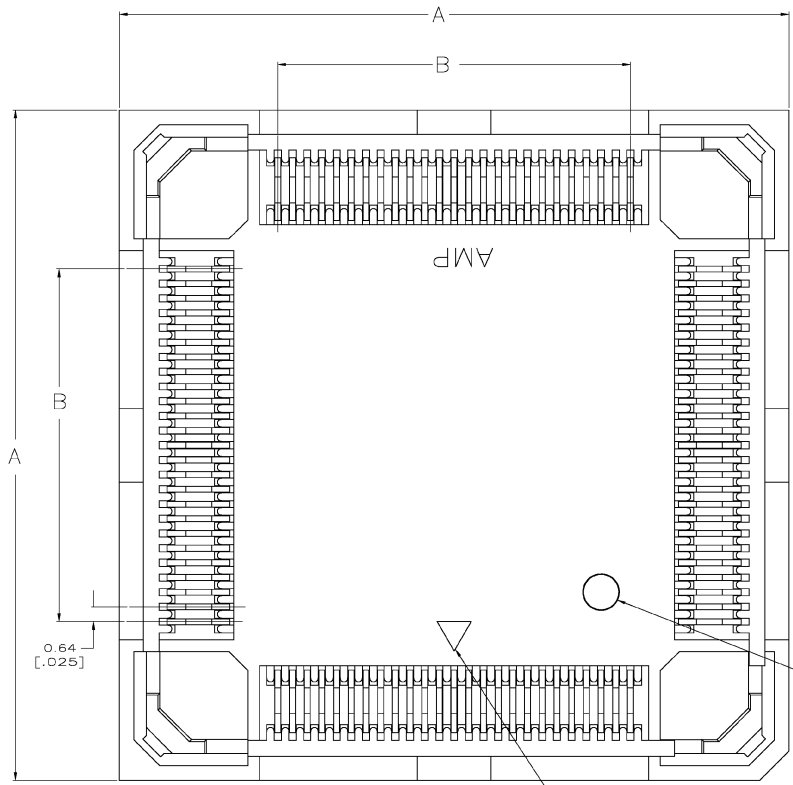
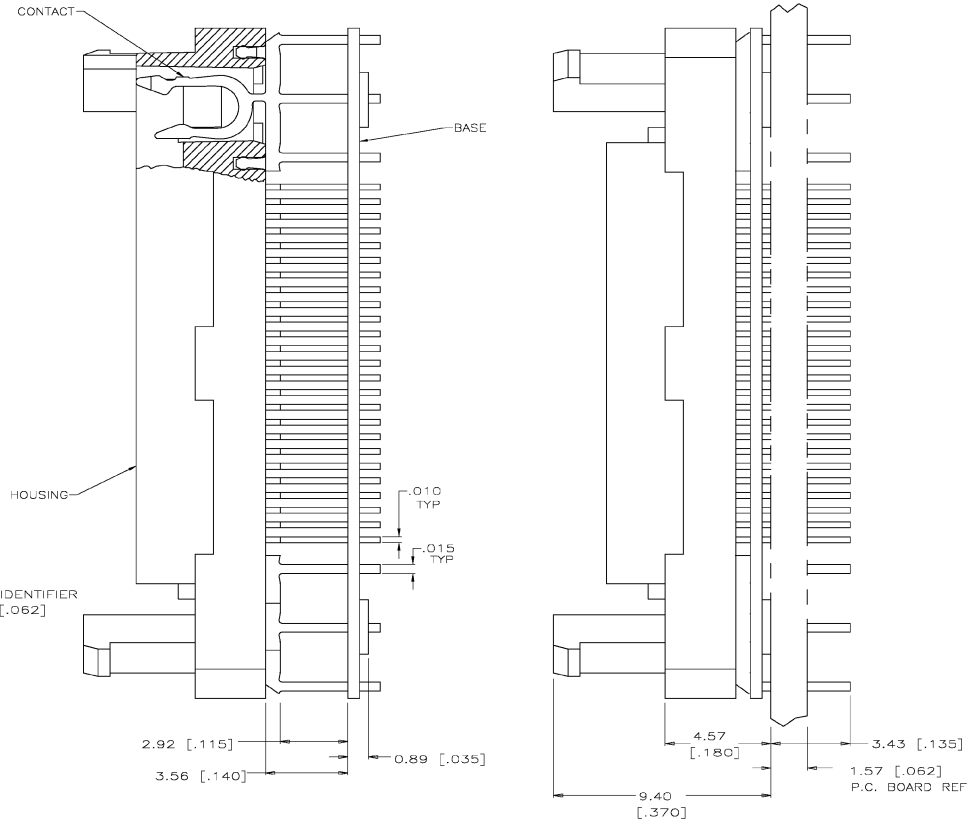


| REV | DATE | DESCRIPTION | BY | CHK | APP |
|-----|------|--------------|----|-----|-----|
| AG | 53 | | | | |
| M | | 063C-0297-03 | | TK | KW |



SUB-ASSEMBLY SHOWN AS SHIPPED SUB-ASSEMBLY SHOWN IN FINAL POSITION



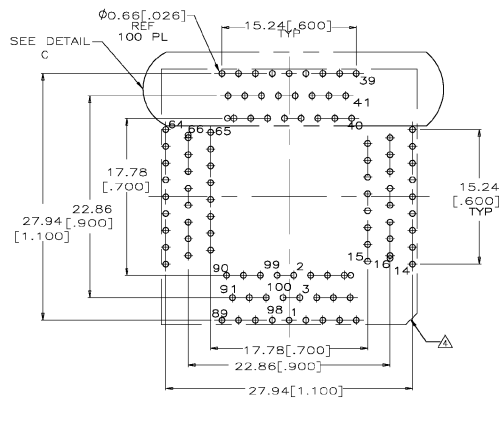
- △ HOUSING MATERIAL SHALL BE LIQUID CRYSTAL POLYMER. (BLACK)
- △ CONTACT MATERIAL SHALL BE PHOS. BRONZE. PLATING SHALL BE 0.00508 [.000200] MIN. TIN LEAD OVER 0.00127 [.000050] MIN. NICKEL ALL OVER.
- △ BASE MATERIAL SHALL BE LIQUID CRYSTAL POLYMER. (BLACK)
- △ SOCKET TO BE MOUNTED WITH AMP LOGO AND CHAMFER ON SOCKET LOCATED IN THIS CORNER OF P.C. BOARD.
- △ THIS AREA TO BE FREE OF COMPONENTS FOR ACCESS OF THE MICRO-PITCH HAND TOOL. MINIMUM OF TWO OPPOSITE SIDES.
- △ CONTACT MATERIAL SHALL BE PHOS. BRONZE. PLATING SHALL BE 0.00508 [.000200] MIN. TIN (LEAD FREE) OVER 0.00127 [.000050] MIN. NICKEL ALL OVER.
- △ PRELIMINARY NOT RELEASED FOR MANUFACTURING.

| | | | | |
|--------|--------------|---------------|--------------|------------|
| △ | 20.32 [.800] | 34.04 [1.340] | 2-821949-5 | 132 |
| △ | 15.24 [.600] | 28.96 [1.140] | △ 2-821949-4 | 100 |
| △ | 20.32 [.800] | 34.04 [1.340] | 821949-5 | 132 |
| △ | 15.24 [.600] | 28.96 [1.140] | 821949-4 | 100 |
| FINISH | B | A | PART NO. | NO OF POSN |

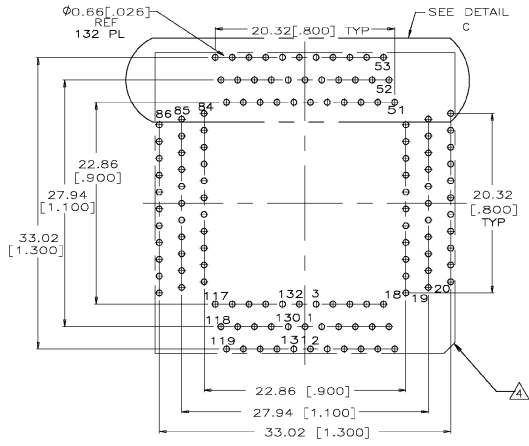
THIS DRAWING IS A CONTROLLED DOCUMENT.

| | | |
|------------------------|--------------------|---|
| DESIGNED BY: K. SALMON | DATE: 12-14-82 | Tyco Electronics Corporation Harrisburg, Pa. |
| DRAWN BY: R. MILLER | DATE: 12-15-82 | |
| PROJ. NO: 063C-0297-03 | DATE: 12-15-82 | MICRO-PITCH SOCKET 025 C/LPQPP GULLWING, HOUSING SUB-ASSEMBLY |
| MATERIAL: PHOS. BRONZE | FINISH: 2-821949-5 | APPLICATION SPEC: --- WEIGHT: --- SIZE: A1 DATE CODE: --- DRAWING NO: 00779 CUSTOMER DRAWING: 821949 SCALE: 10:1 SHEET: 1 OF 3 REV: M |

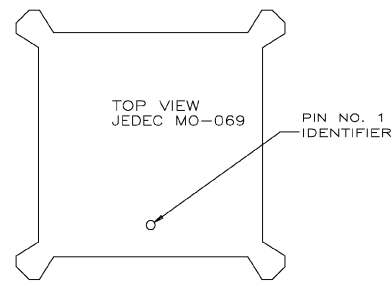
| LOC | REV | REVISIONS | DATE | BY | APP |
|-----|-----|-----------|------|----|-----|
| AC | 53 | | | | |
| | | | | | |
| | | | | | |
| | | | | | |



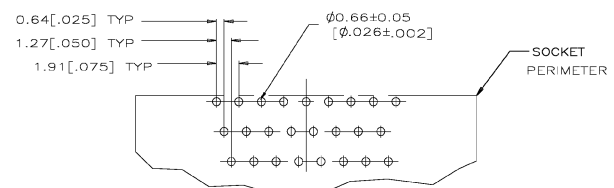
RECOMMENDED P.C. BOARD HOLE PATTERN
 SOCKET SIDE
 100 POSN. SCALE: 4:1



RECOMMENDED P.C. BOARD HOLE PATTERN
 SOCKET SIDE
 132 POSN. SCALE: 4:1



CHIP POLARIZATION REFERENCE VIEW
 (PIN NUMBERING ON THIS SHEET ARE FOR CENTER LOCATION OF PIN 1 IDENTIFIER)

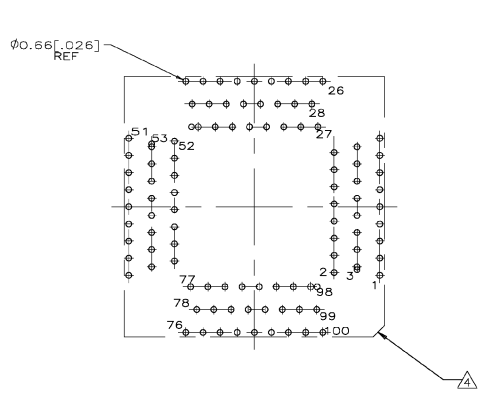


DETAIL C
 (TYP FOR ALL POSITIONS)
 SCALE 5:1

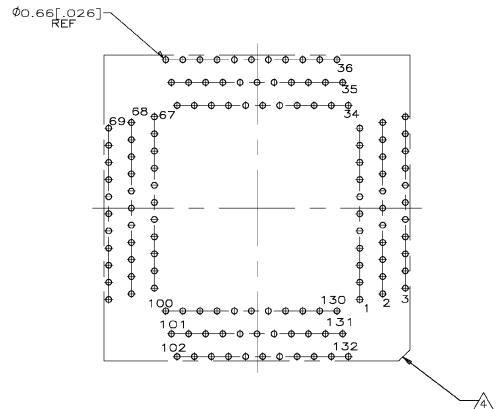
| | | | | | |
|---|--|--|---------------|---------------|---------------|
| THIS DRAWING IS A CONTROLLED DOCUMENT. | | DATE: 10-4-91 | BY: J. SALMON | REV: 10-15-91 | BY: J. MILLER |
| DIMENSIONS IN INCHES | | TFC Electronics Corporation Harrisburg, PA | | | |
| TOLERANCES UNLESS OTHERWISE SPECIFIED | | MICRO-PITCH SOCKET | | | |
| 1. P.L.C. ± .010 2. P.L.C. ± .005 3. P.L.C. ± 0.0025 4. P.L.C. ± 0.0015 5. P.L.C. ± 0.0010 6. P.L.C. ± 0.0005 7. P.L.C. ± 0.00025 8. P.L.C. ± 0.00015 9. P.L.C. ± 0.00010 10. P.L.C. ± 0.00005 | | .025 C/L P/Q/P? GULLWING, HOUSING SUB-ASSEMBLY | | | |
| MATERIAL | | SIZE | DATE CODE | DRAWING NO. | RESTRICTED TO |
| 1. 2. 3. 4. 5. 6. 7. 8. 9. 10. | | A1 | 00779 | 821949 | — |
| CUSTOMER DRAWING | | SCALE | 10:1 | SHEET | 2 OF 3 |

THIS DRAWING IS UNCLASSIFIED. RELEASED FOR PUBLICATION. ALL RIGHTS RESERVED.

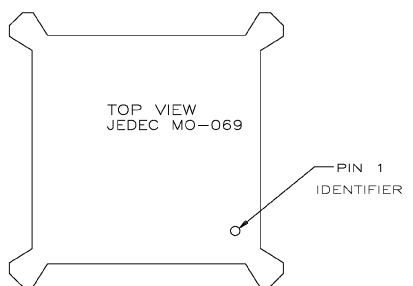
| REV. NO. | | REVISIONS | | | |
|----------|------|-------------|----|-----|-------|
| REV. | DATE | DESCRIPTION | BY | CHK | APP'D |
| M | | SEE SHEET 1 | | | |



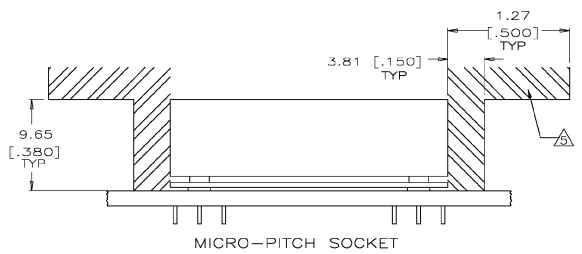
RECOMMENDED P.C. BOARD HOLE PATTERN
 SOCKET SIDE
 100 POSN.
 SEE SHEET 2 100 POSN FOR DIMENSIONS



RECOMMENDED P.C. BOARD HOLE PATTERN
 SOCKET SIDE
 132 POSN.
 SEE SHEET 2 132 POSN FOR DIMENSIONS



CHIP POLARIZATION REFERENCE VIEW
 (PIN NUMBERING ON THIS SHEET IS FOR OFF CENTER LOCATION OF PIN 1 IDENTIFIER)



MICRO-PITCH SOCKET

| | | | | |
|--|--|-------------------|---------------------------|---|
| THIS DRAWING IS A CONTROLLED DOCUMENT. | | BY: K. SALMON | 10-4-90 | Type Electronics Corporation Harrisburg, Pa. |
| DRAWN BY: R. MILLER | | 10-5-90 | NAME: Syntron Electronics | |
| DIMENSIONS: INCHES | | 0 DEC | 10-5-90 | PRODUCT SPEC: MICRO-PITCH SOCKET |
| TOLERANCES UNLESS OTHERWISE SPECIFIED: | | 1 DEC | | 025 C/L PQFP GULLWING HOUSING SUB-ASSEMBLY |
| 1 P.L.C. ± .010 2 P.L.C. ± .005 3 P.L.C. ± .005 4 P.L.C. ± .010 (MKS) 5 P.L.C. ± .010 (MKS) | | APPLICATION SPEC: | | SIZE: A1 |
| 6 ANGLES ± .010 7 FINISH: RA 0.8 8 PARTS: 1 | | WGT: -- | CAGE CODE: 00779 | DRAWING NO: 821949 |
| MATERIAL: -- | | REGR: -- | CUSTOMER DRAWING | SCALE: 10:1 |
| 9 HOLE POSITION: ± .010 10 HOLE POSITION: ± .010 11 HOLE POSITION: ± .010 12 HOLE POSITION: ± .010 13 HOLE POSITION: ± .010 14 HOLE POSITION: ± .010 15 HOLE POSITION: ± .010 16 HOLE POSITION: ± .010 17 HOLE POSITION: ± .010 18 HOLE POSITION: ± .010 19 HOLE POSITION: ± .010 20 HOLE POSITION: ± .010 21 HOLE POSITION: ± .010 22 HOLE POSITION: ± .010 23 HOLE POSITION: ± .010 24 HOLE POSITION: ± .010 25 HOLE POSITION: ± .010 26 HOLE POSITION: ± .010 27 HOLE POSITION: ± .010 28 HOLE POSITION: ± .010 29 HOLE POSITION: ± .010 30 HOLE POSITION: ± .010 31 HOLE POSITION: ± .010 32 HOLE POSITION: ± .010 33 HOLE POSITION: ± .010 34 HOLE POSITION: ± .010 35 HOLE POSITION: ± .010 36 HOLE POSITION: ± .010 37 HOLE POSITION: ± .010 38 HOLE POSITION: ± .010 39 HOLE POSITION: ± .010 40 HOLE POSITION: ± .010 41 HOLE POSITION: ± .010 42 HOLE POSITION: ± .010 43 HOLE POSITION: ± .010 44 HOLE POSITION: ± .010 45 HOLE POSITION: ± .010 46 HOLE POSITION: ± .010 47 HOLE POSITION: ± .010 48 HOLE POSITION: ± .010 49 HOLE POSITION: ± .010 50 HOLE POSITION: ± .010 51 HOLE POSITION: ± .010 52 HOLE POSITION: ± .010 53 HOLE POSITION: ± .010 54 HOLE POSITION: ± .010 55 HOLE POSITION: ± .010 56 HOLE POSITION: ± .010 57 HOLE POSITION: ± .010 58 HOLE POSITION: ± .010 59 HOLE POSITION: ± .010 60 HOLE POSITION: ± .010 61 HOLE POSITION: ± .010 62 HOLE POSITION: ± .010 63 HOLE POSITION: ± .010 64 HOLE POSITION: ± .010 65 HOLE POSITION: ± .010 66 HOLE POSITION: ± .010 67 HOLE POSITION: ± .010 68 HOLE POSITION: ± .010 69 HOLE POSITION: ± .010 70 HOLE POSITION: ± .010 71 HOLE POSITION: ± .010 72 HOLE POSITION: ± .010 73 HOLE POSITION: ± .010 74 HOLE POSITION: ± .010 75 HOLE POSITION: ± .010 76 HOLE POSITION: ± .010 77 HOLE POSITION: ± .010 78 HOLE POSITION: ± .010 79 HOLE POSITION: ± .010 80 HOLE POSITION: ± .010 81 HOLE POSITION: ± .010 82 HOLE POSITION: ± .010 83 HOLE POSITION: ± .010 84 HOLE POSITION: ± .010 85 HOLE POSITION: ± .010 86 HOLE POSITION: ± .010 87 HOLE POSITION: ± .010 88 HOLE POSITION: ± .010 89 HOLE POSITION: ± .010 90 HOLE POSITION: ± .010 91 HOLE POSITION: ± .010 92 HOLE POSITION: ± .010 93 HOLE POSITION: ± .010 94 HOLE POSITION: ± .010 95 HOLE POSITION: ± .010 96 HOLE POSITION: ± .010 97 HOLE POSITION: ± .010 98 HOLE POSITION: ± .010 99 HOLE POSITION: ± .010 100 HOLE POSITION: ± .010 | | REV: 3 | SHEET: 3 | REV: M |