

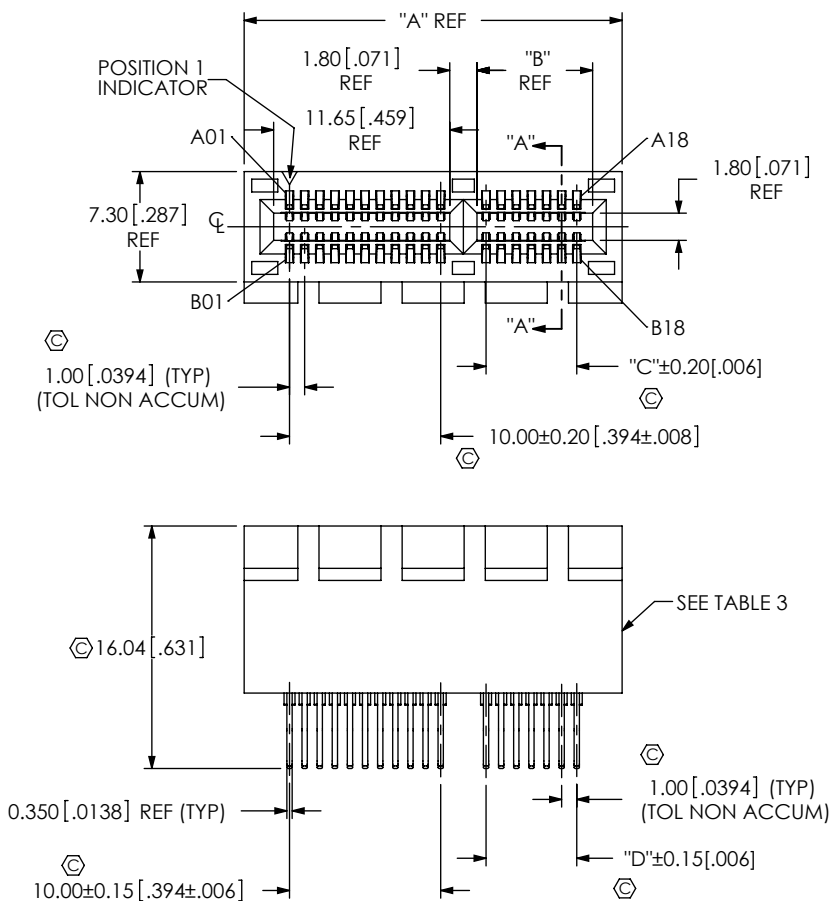
REVISION F

DO NOT SCALE FROM THIS PRINT

NOTES:

- ⊕ REPRESENTS A CRITICAL DIMENSION.
- MINIMUM CONTACT RETENTION: 4.9N.
- PARTS TO BE PACKAGE IN TUBE.

DESIGNED & DIMENSIONED IN MILLIMETERS[INCHES]



PCIE-XXX-02-X-D-EMSX-XX

No. OF POSITIONS
-036, -064, -098, -164 (DOUBLE ROW)

LEAD STYLE
-02: 1.57[.062"] THICK CARD

PLATING SPECIFICATION
-S: 30u" Au IN THE CONTACT AREA, TIN ON THE TAIL
-F: 3u" Au IN THE CONTACT AREA, TIN ON THE TAIL

OPTION
-BG: BOARD GUIDE

OPTION
-EMS2: 1.57[.062"] PCB
-EMS3: 2.36[.093"] PCB

ROW SPECIFICATION
-D: DOUBLE ROW

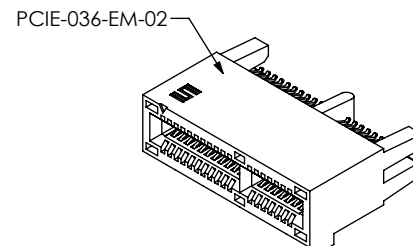
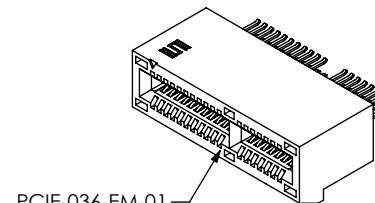


FIG 1
PCIE-036-02-X-D-EMS2 SHOWN

TABLE 2

OPTION	LEAD STYLE	"E"	"F"
NONE	-EMS2	1.50 [0.059]	N/A
	-EMS3	2.25 [0.089]	N/A
-BG	-EMS2	1.50 [0.059]	1.65 [0.065]
	-EMS3	2.25 [0.089]	2.42 [0.095]

TABLE 3

OPTION	EDGE MOUNT OPTION	BODY	CONTACT/PIN
NONE	-EMS2	PCIE-XX-EM-01	C-267-02-X
	-EMS3		C-267-04-X
-BG	-EMS2	PCIE-XX-EM-02	C-267-01-X
	-EMS3	PCIE-XX-EM-03	C-267-03-X

No. OF POS	"A"	"B"	"C"	"D"
-036	25.00 [0.984]	7.65 [0.301]	6.00 [0.236]	6.00 [0.236]
-064	39.00 [1.535]	21.65 [0.852]	20.00 [0.787]	20.00 [0.787]
-98	56.00 [2.205]	38.65 [1.522]	37.00 [1.457]	37.00 [1.457]
-164	89.00 [3.504]	71.65 [2.821]	70.00 [2.756]	70.00 [2.756]

UNLESS OTHERWISE SPECIFIED, DIMENSIONS ARE IN MILLIMETERS[INCHES]. TOLERANCES ARE: DECIMALS ANGLES X.X: ±0.3 [0.1] 2° X.XX: ±0.13 [0.05] X.XXX: ±0.051 [0.020]

PROPRIETARY NOTE

THIS DOCUMENT CONTAINS INFORMATION CONFIDENTIAL AND PROPRIETARY TO SAMTEC, INC. AND SHALL NOT BE REPRODUCED OR TRANSFERRED TO OTHER DOCUMENTS OR DISCLOSED TO OTHERS OR USED FOR ANY PURPOSE OTHER THAN THAT WHICH IT WAS OBTAINED WITHOUT THE EXPRESSED WRITTEN CONSENT OF SAMTEC, INC.



520 PARK EAST BLVD, NEW ALBANY, IN 47150
PHONE: 812-944-6733 FAX: 812-948-5047
e-Mail: info@SAMTEC.com code: 55322

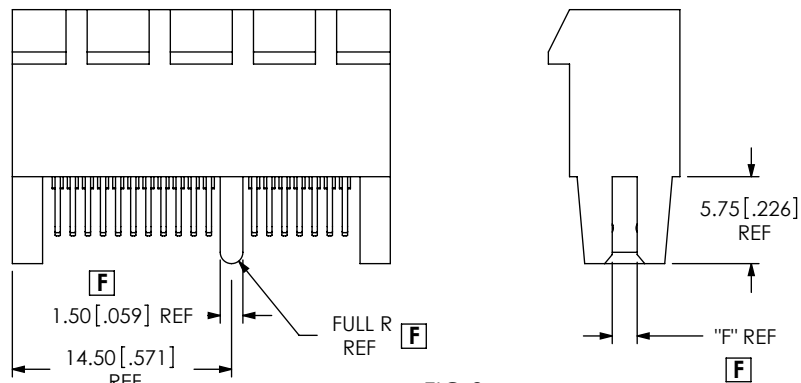
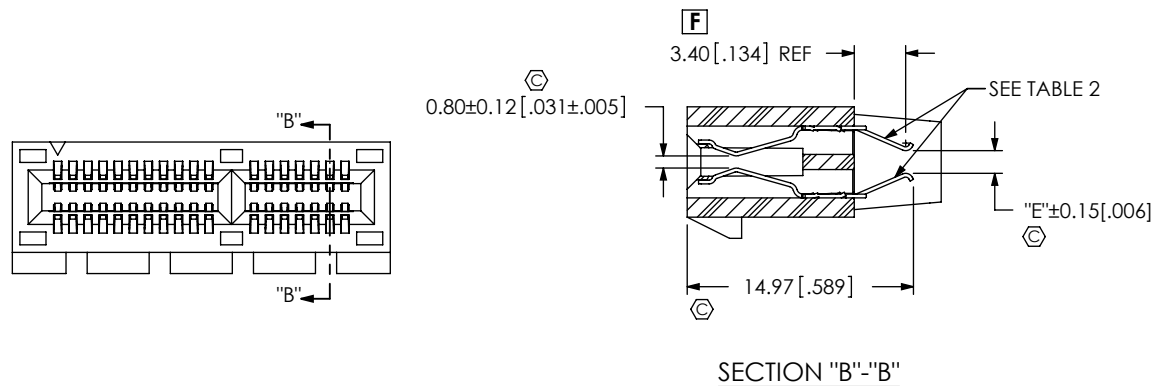
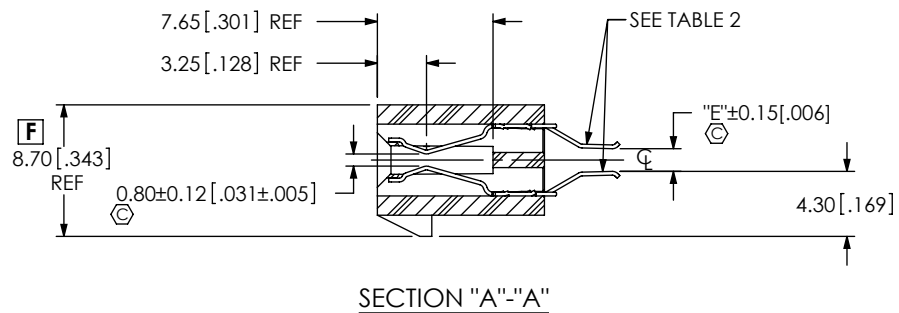
MATERIAL: DO NOT SCALE DRAWING SHEET SCALE: 2:1

INSULATOR: LCP UL 94 VO, COLOR: BLACK
CONTACT : PHOS BRONZE

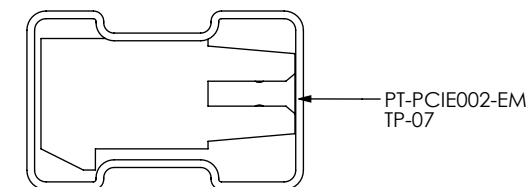
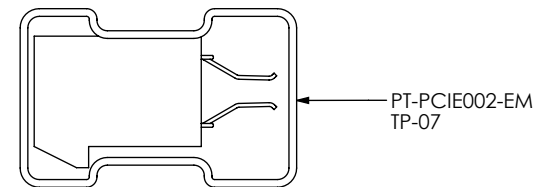
DESCRIPTION:
PCI EXPRESS EDGE MOUNT ASSEMBLY

DWG. NO.
PCIE-XXX-02-X-D-EMSX-XX

BY: VICKY Z 09/01/2009 SHEET 1 OF 2



PCIE-036-02-X-D-EMS2-BG SHOWN
(SAME AS FIG 1, EXCEPT AS SHOWN)



PROPRIETARY NOTE
THIS DOCUMENT CONTAINS INFORMATION CONFIDENTIAL AND PROPRIETARY TO SAMTEC, INC. AND SHALL NOT BE REPRODUCED OR TRANSFERRED TO OTHER DOCUMENTS OR DISCLOSED TO OTHERS OR USED FOR ANY PURPOSE OTHER THAN THAT WHICH IT WAS OBTAINED WITHOUT THE EXPRESSED WRITTEN CONSENT OF SAMTEC, INC.

DO NOT SCALE DRAWING

SHEET SCALE: 2:1

samtec

520 PARK EAST BLVD, NEW ALBANY, IN 47150
PHONE: 812-944-6733 FAX: 812-948-5047
e-Mail: info@SAMTEC.com code: 55322

DESCRIPTION:
PCI EXPRESS EDGE MOUNT ASSEMBLY

DWG. NO.
PCIE-XXX-02-X-D-EMSX-XX

BY: VICKY Z 09/01/2009 SHEET 2 OF 2