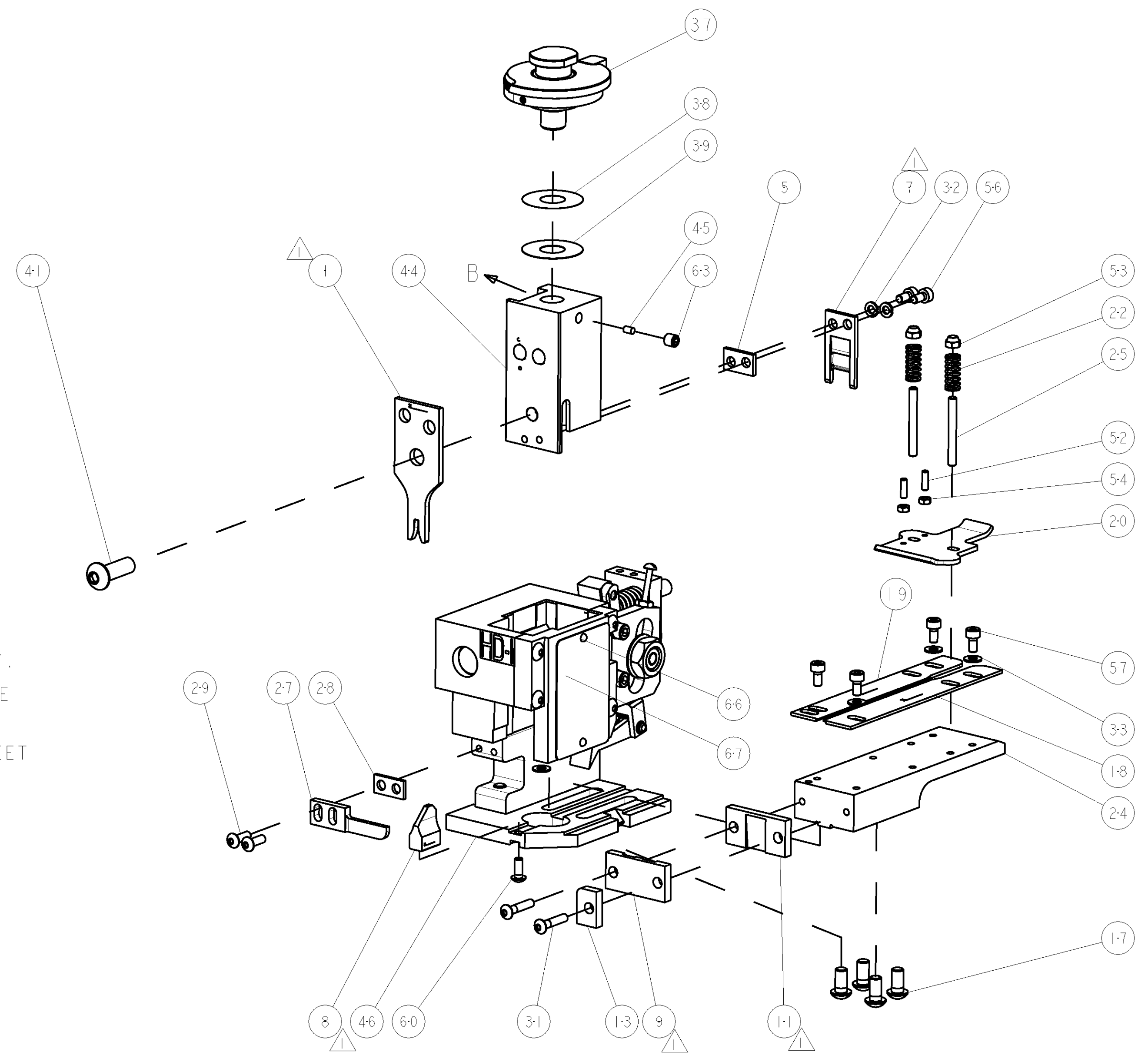
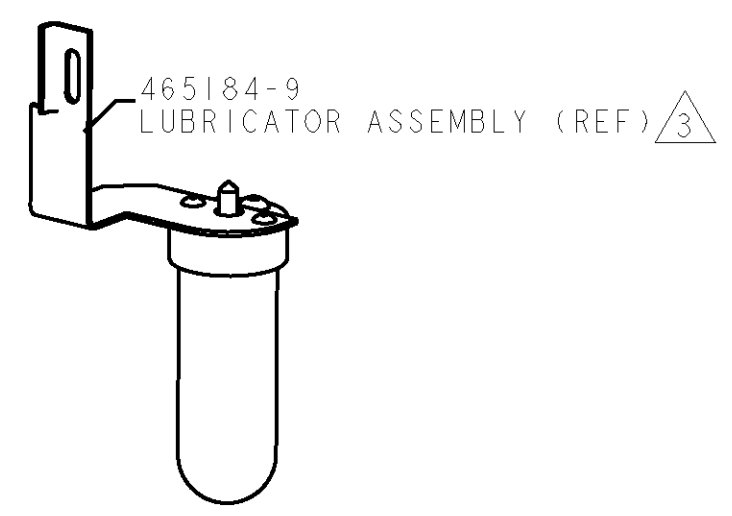


| PART NUMBER | REV | TERMINATOR        | FEED TYPE      | DESCRIPTION        |
|-------------|-----|-------------------|----------------|--------------------|
| 1529272-1   | A   | BENCH & LEADMAKER | MECH POST FEED | HDI APPLICATOR     |
| 7-1529272-1 | A   | BENCH & LEADMAKER | MECH POST FEED | -1 AND SPARE PARTS |
| 7-1529272-7 | A   | -                 | -              | SPARE PARTS KIT    |

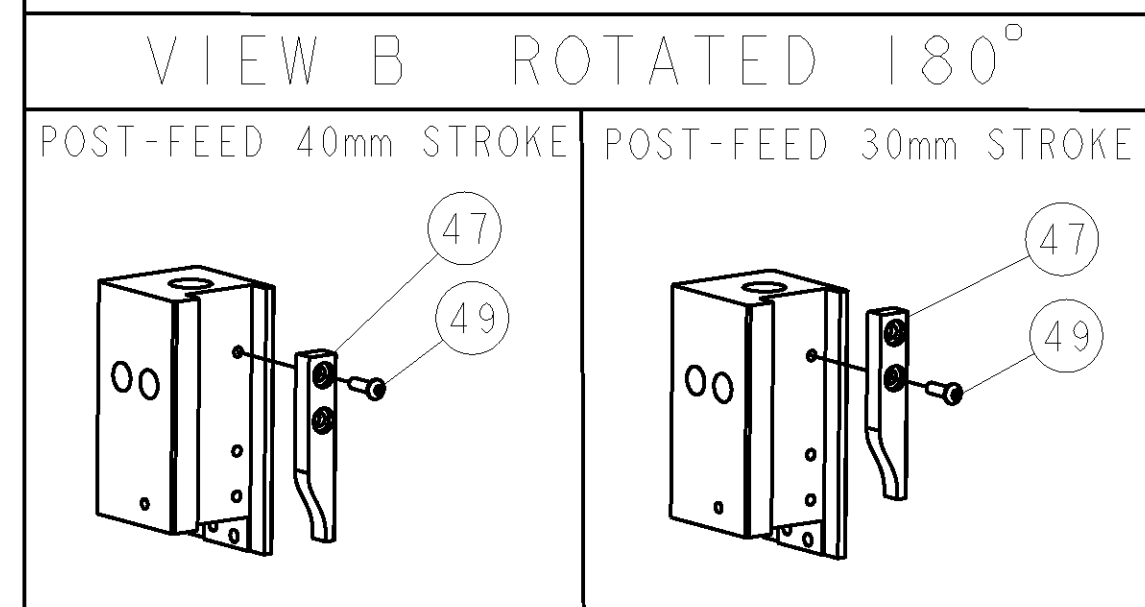
| LOC | DIST | REV | DATE      | BY | CHK | APPR |
|-----|------|-----|-----------|----|-----|------|
| A   | 66   | A   | 15MAY2008 | MB | MC  |      |
|     |      | A1  | 01NOV2010 | RS | SX  |      |

| CRIMP DATA                 | TE TERMINAL    | TE CRIMP SPECS      |
|----------------------------|----------------|---------------------|
| TERMINAL NAME: RING TONGUE |                |                     |
| CRIMP                      | SIZE           | TYPE                |
| WIRE                       | 2.54 [.100 IN] | F                   |
| INSUL                      | -              | -                   |
| WIRE STRIP LENGTH          |                | APPL INSTRUCTIONS   |
| 3.90-4.70 [.154-.185 IN]   |                | 408-8323 & 408-8490 |
| TERMINAL                   | 114-3118       | FEED                |
| APPL SPEC                  | -              | 11.81 [.465 IN]     |

| WIRE SIZE            | CRIMP HEIGHT               | REF SETTING |
|----------------------|----------------------------|-------------|
| 1.50 mm <sup>2</sup> | 1.80 ±0.05 [.071 ±.002 IN] | B7          |
| 1.00 mm <sup>2</sup> | 1.68 ±0.05 [.066 ±.002 IN] | C6          |
| 0.75 mm <sup>2</sup> | 1.63 ±0.05 [.064 ±.002 IN] | D0          |
| 0.50 mm <sup>2</sup> | 1.57 ±0.05 [.062 ±.002 IN] | D4          |



- 1 RECOMMENDED SPARE PARTS
- 2 GREASE RAM, CAM, CAM FOLLOWER AND FEED ROD LIGHTLY.
- 3 CERTAIN TERMINALS REQUIRE LUBRICATION. REFER TO THE APPLICATOR INSTRUCTION SHEET FOR MORE INFORMATION.
- 4 LUBRICATE DAILY PER THE APPLICATOR INSTRUCTION SHEET SUPPLIED WITH THE APPLICATOR.
- 5 WIRE RANGE SHOWN IS THAT OF THE TERMINAL.



**\* WARNING**  
 ON INSTALLATION, SET WIRE DISC TO LARGEST WIRE SIZE SETTING. USE OF SETTINGS BELOW MIN. REQUIRED CRIMP HEIGHT SETTING WILL CAUSE DAMAGE TO CRIMP TOOLING.

| QTY | DESCRIPTION                               | ITEM NO |
|-----|---|---------|
| -   | 1338705-4 DOCUMENTATION PACKAGE           | 71      |
| -   | 461264-5 PLATE, IDENTIFICATION            | 67      |
| -   | 21017-2 SCREW, DRIVE                      | 66      |
| -   | 3-18031-0 SCR, SET, CUP POINT M6 X 6.0    | 63      |
| -   | 18024-7 SCR, BTN SKT HD CAP (M4 X 10.0)   | 60      |
| -   | 1-18023-0 SCR, SKT HD CAP M4 X 8.0        | 57      |
| -   | 1-18023-0 SCR, SKT HD CAP M4 X 8.0        | 56      |
| -   | 18029-1 NUT, HEX, REG M3                  | 54      |
| -   | 986965-1 NUT, LOCK, HEX, TORQUE (M4)      | 53      |
| -   | 2-18032-2 SCR, SET, FLT POINT M3 X 10.0   | 52      |
| -   | 18024-3 SCR, BTN SKT HD CAP (M3 X 10.0)   | 49      |
| -   | 1338676-1 CAM, UNIVERSAL POST-FEED        | 47      |
| -   | 1338662-1 SUB ASSY, APPLICATOR FRAME      | 46      |
| -   | 690191-1 PLUG, NYLON                      | 45      |
| -   | 1320998-1 RAM                             | 44      |
| -   | 2-18024-6 SCR, BTN SKT HD CAP (M8 X 25.0) | 41      |
| -   | 690125-1 SHIM SUB-ASSY                    | 39      |
| -   | 469367-3 SHIM                             | 38      |
| -   | 879103-4 FINE ADJUST HEAD ASSEMBLY        | 37      |
| -   | 18027-2 WASHER, FLAT, REG M4              | 33      |
| -   | 18025-2 WASHER, SPRG LOCK, REG M4         | 32      |
| -   | 1-18024-0 SCR, BTN SKT HD CAP (M4 X 20.0) | 31      |
| -   | 18024-8 SCR, BTN SKT HD CAP (M4 X 12.0)   | 29      |
| -   | 3-690451-2 SPACER, STRIPPER               | 28      |
| -   | 240639-1 STRIPPER (MACHINING)             | 27      |
| -   | 1320906-1 STUD, THREADED                  | 25      |
| -   | 1320995-1 PLATE, STRIP GUIDE              | 24      |
| -   | 4-22281-1 SPRING, DRAG                    | 22      |
| -   | 1338665-1 DRAG                            | 20      |
| -   | 458030-2 STRIP GUIDE, REAR                | 19      |
| -   | 458031-2 STRIP GUIDE, FRONT               | 18      |
| -   | 1-18024-8 SCR, BTN SKT HD CAP (M6 X 12.0) | 17      |
| -   | 690481-2 SPACER, HOLD DOWN                | 13      |
| -   | 240644-1 PLATE, REAR SHEAR                | 11      |
| -   | -   | 10      |
| -   | 690482-5 PLATE, FRONT SHEAR               | 9       |
| 1   | 2 1633385-4 ANVIL, COMBINATION            | 8       |
| -   | 690474-5 BLADE, SLUG                      | 7       |
| -   | 3-240641-7 SPACER                         | 5       |
| -   | -   | 4       |
| -   | -   | 3       |
| -   | -   | 2       |
| 1   | 2 456407-8 CRIMPER, WIRE PREMIUM          | 1       |

| DIMENSIONS: | TOLERANCES UNLESS OTHERWISE SPECIFIED:                                   | DATE             | BY        | CHK       | APPR | NAME         | PRODUCT SPEC | APPLICATION SPEC | SIZE | CAGE CODE                  | DRAWING NO | RESTRICTED TO |
|-------------|--|------------------|-----------|-----------|------|--------------|--------------|------------------|------|----------------------------|------------|---------------|
| INCHES      | 0 PLC ±.01<br>1 PLC ±0.1<br>2 PLC ±0.01<br>3 PLC ±0.001<br>4 PLC ±0.0001 | 09APR2008        | M. BETISS |           |      | M. CLIFFORD  |              |                  | A1   | 00779                      | C=1529272  |               |
| MATERIAL    | FINISH   | CUSTOMER DRAWING |           | SCALE 3:5 |      | SHEET 1 OF 1 |              | REV A1           |      | CUSTOMER VIEWABLE ASSEMBLY |            |               |