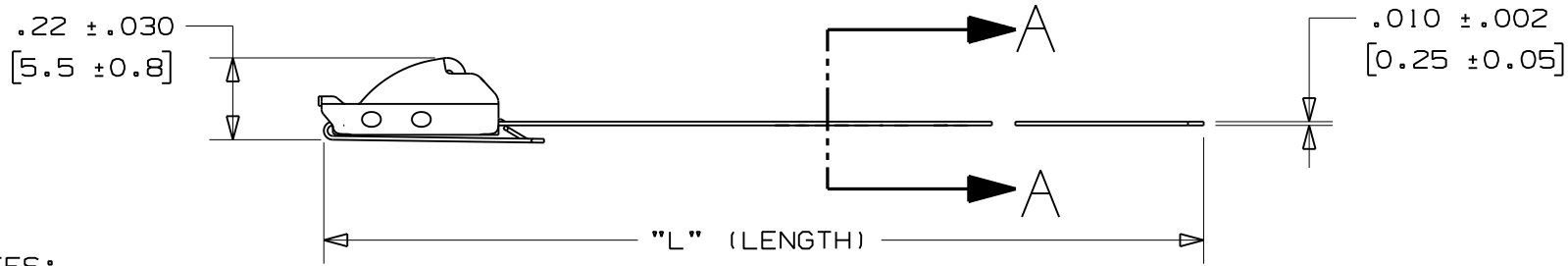
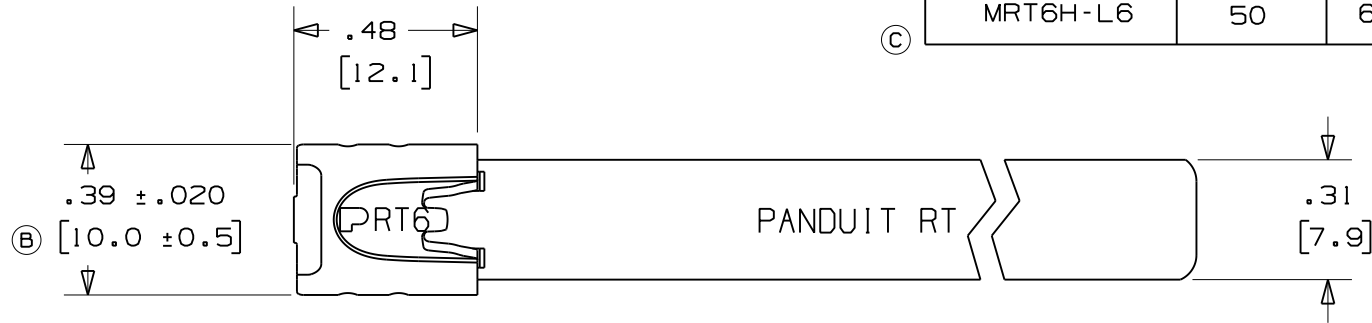


THIS COPY IS PROVIDED ON A RESTRICTED BASIS AND IS NOT TO BE USED IN ANY WAY DETRIMENTAL TO THE INTERESTS OF PANDUIT CORP.

PANDUIT PART NO.	PACKAGE QTY.	MAX. BUNDLE DIAMETER	LENGTH "L" $\pm .3$ " [7]
MRT1.5H-L6	50	1.5" [38]	9.7" [246]
MRT2H-L6	50	2" [51]	11.3" [287]
MRT4H-L6	50	4" [102]	17.6" [447]
MRT6H-L6	50	6" [152]	23.8" [604]




SECTION A - A
SCALE 6:1

NOTES:

- APPLICATION TOOLS - MTRTH
- MINIMUM LOOP TENSILE STRENGTH - 400 LBS. (1780 NEWTONS) WHEN TESTED ON A 1.5" MANDREL.
- BRACKETS [] DENOTES DIMENSION IN MILLIMETERS
- TOLERANCES:
 - .XXX = $\pm .010$ [.25]
 - .XX = $\pm .02$ [.5]
 - .X = $\pm .03$ [.8]
 - ANGLES = $\pm 2^\circ$
- MATERIAL: 316 STAINLESS STEEL

N41236BS_DC/03A

03A	6/07	JAMB	EJD	APPLICATION TOOLS WERE MRT1 & PRT1	-----	 TINLEY PARK, ILLINOIS
02	1/07	JAMB	EJD	REMOVED PART NO'S. MRT8H-L6 & MRT10H-L6 FROM TABLE	SS00317	
01	11/06	JAMB	EJD	ADDED .500" TO THE LENGTH "L" TO ALL PART NO'S. IN TABLE. DIM .39" WAS .392"	SS00277	
00	10/06	JAMB	EJD	DRAWING RELEASED	SS00229	
REV	DATE	BY	CHK	DESCRIPTION	ECN #	DRAWN BY JAMB CHK'D EJD SCALE 2:1 DRAWING NO. N41236BS