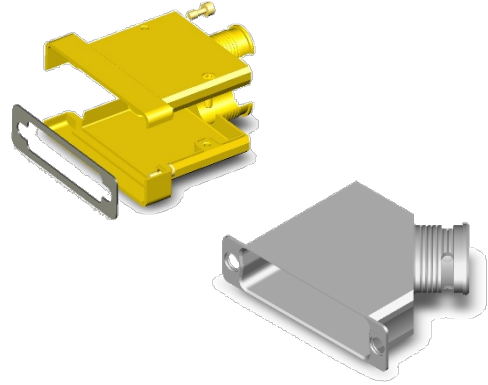


Features/Benefits

- Compliant with ESA specifications 3401/072
- Ultra-light weight
- Solid fully machined aluminium alloy material
- Non Magnetic

Typical Applications

- Space equipment
- Satellites harnesses
- Avionics / Military



Specification

High performance Backshell ESA qualified, for space applications.
Compliant to ESCC specifications 3401/072 Lightweight Accessories for rectangular connectors 3401/001 and 3401/002.
Compatible with ESCC 3401/022 accessories.
Suitable for use in Space, and high performance military/aerospace applications: Board to Cable or Cable to Cable applications.
Sizes available:

E, A, B, C, D and F.

Outlets:

Straight saddle clamp
Straight cylindrical
Straight cylindrical for EMI application
Straight elliptical
45° elliptical
90° cylindrical

Characteristics

CHARACTERISTIC	SPECIFICATION
Operating temperature range	-55 / +125 °C
Storage temperature range	-55 / +125 °C
Residual Magnetism Level	200 Gamma max.

Quality Level

Flying Model: Code 3401 - ESA / ESCC specification. Qualification reviewed every 2 years.
Engineering Model: code FR022 - C&K specification.

Options

Universal male screwlock with "slotted" or "hexagonal hole" head screw (be ordered separately).

Packaging

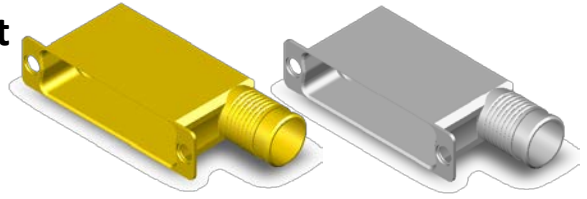
Individual packaging.
Traceability associated as per ESA/ESCC specifications.

Materials & Finishes

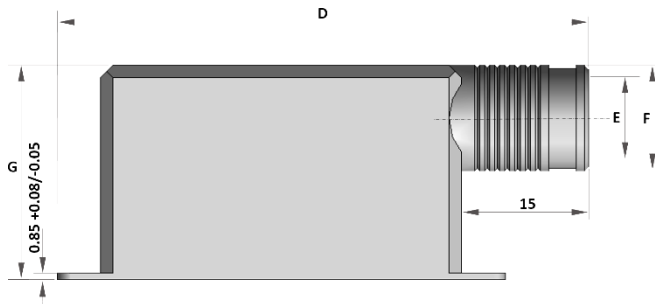
COMPONENT	MATERIAL	FINISH
Shell	Aluminium alloy 6061-T6	Code A174: 25.4 µm min. electroless Nickel No code or FR172: 0.7 µm min. Gold over 25.4 µm min. electroless Nickel
Screws	Brass	0.7 µm Gold over 1 µm min. Cu
Gasket	Silicone conductive elastomer	None

90° Shielded Longitudinal Cable Outlet Right Outlet

(Our design accepts right or left mounting)

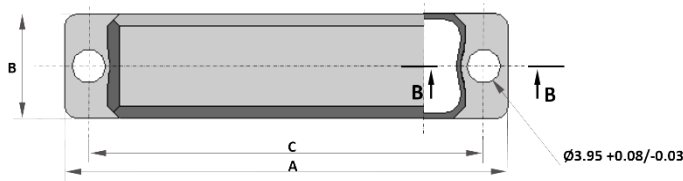


Dimensions and Weight

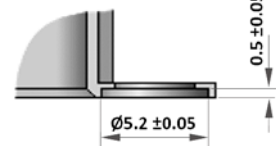


Size	A ±0.2	B ±0.15	C ±0.13	D ±0.50	ØE ±0.15	ØF ±0.15	G ±0.50	Weight (grams)
E	30.68	12.50	24.99	40.6	7.00	9.00	25.4	6.5
A	39.01	12.50	33.32	49.0	10.00	12.00	25.4	10
B	52.91	12.50	47.04	62.7	10.50	12.50	25.4	13.5
C	69.19	12.50	63.50	79.2	10.50	12.50	25.4	18
D	66.80	15.30	61.11	76.7	13.30	15.30	25.4	23
F	69.30	17.30	63.50	79.9	15.30	17.30	35.4	28

Configuration Sizes E-A-B-C-D



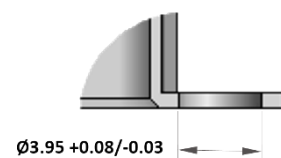
Detail B-B



Configuration Size F



Detail A-A

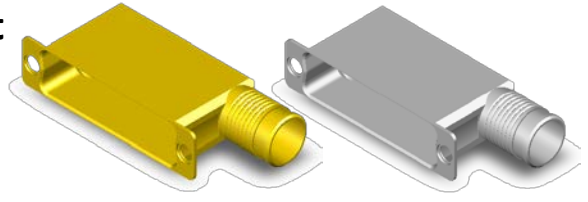


Description and Part Numbers

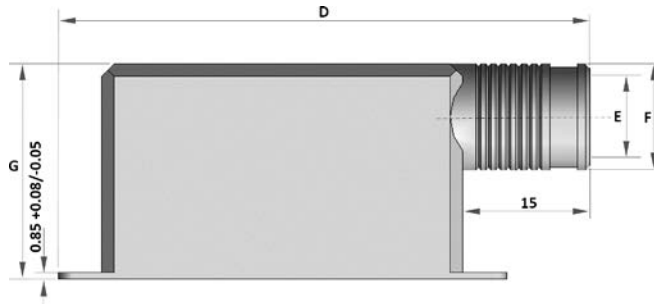
Finish	Size	ESA/ESCC Quality Level		FR022 Quality Level	
		Description	P/N	Description	P/N
Electroless Nickel	E	340107225B NMBA-A174	C115366-2606D	DE-BCKS-05-NMB-A174-FR022	C115366-2606B
	A	340107226B NMBA-A174	C115366-2607D	DA-BCKS-05-NMB-A174-FR022	C115366-2607B
	B	340107227B NMBA-A174	C115366-2608D	DB-BCKS-05-NMB-A174-FR022	C115366-2608B
	C	340107228B NMBA-A174	C115366-2609D	DC-BCKS-05-NMB-A174-FR022	C115366-2609B
	D	340107229B NMBA-A174	C115366-2610D	DD-BCKS-05-NMB-A174-FR022	C115366-2610B
	F	340107276B NMB-A174	C115366-2691D	DF-BCKS-05-NMB-A174-FR022	C115366-2691B
Gold	E	340107225B NMBA	C115366-2606C	DE-BCKS-05-NMB-FR172-FR022	C115366-2606A
	A	340107226B NMBA	C115366-2607C	DA-BCKS-05-NMB-FR172-FR022	C115366-2607A
	B	340107227B NMBA	C115366-2608C	DB-BCKS-05-NMB-FR172-FR022	C115366-2608A
	C	340107228B NMBA	C115366-2609C	DC-BCKS-05-NMB-FR172-FR022	C115366-2609A
	D	340107229B NMBA	C115366-2610C	DD-BCKS-05-NMB-FR172-FR022	C115366-2610A
	F	340107276B NMB	C115366-2691C	DF-BCKS-05-NMB-FR172-FR022	C115366-2691A

90° Shielded Longitudinal Cable Outlet Left Outlet

(Our design accepts right or left mounting)

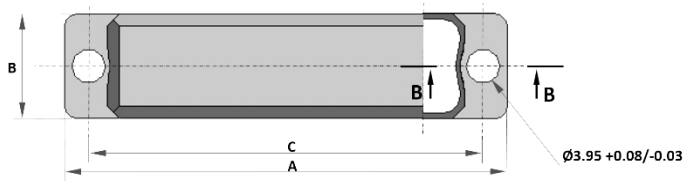


Dimensions and Weight

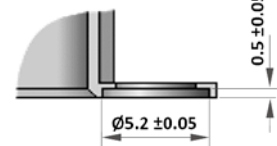


Size	A ±0.2	B ±0.15	C ±0.13	D ±0.50	ØE ±0.15	ØF ±0.15	G ±0.50	Weight (grams)
E	30.68	12.50	24.99	40.6	7.00	9.00	25.4	6.5
A	39.01	12.50	33.32	49.0	10.00	12.00	25.4	10
B	52.91	12.50	47.04	62.7	10.50	12.50	25.4	13.5
C	69.19	12.50	63.50	79.2	10.50	12.50	25.4	18
D	66.80	15.30	61.11	76.7	13.30	15.30	25.4	23
F	69.30	17.30	63.50	79.9	15.30	17.30	35.4	28

Configuration Sizes E-A-B-C-D



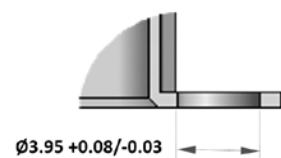
Detail B-B



Configuration Size F



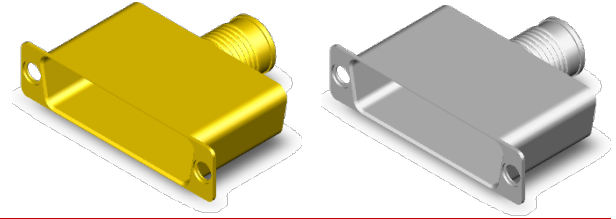
Detail A-A



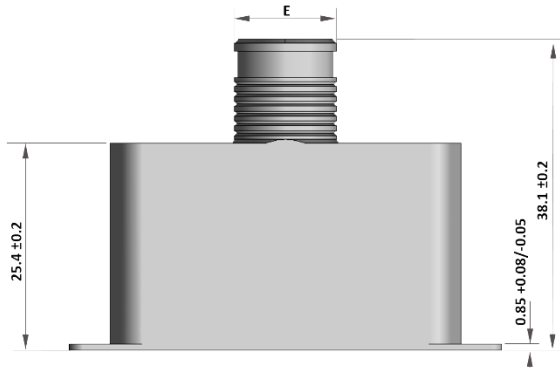
Description and Part Numbers

Finish	Size	ESA/ESCC Quality Level		FR022 Quality Level	
		Description	P/N	Description	P/N
Electroless Nickel	E	340107230B NMBA-A174	C115366-2611D	DE-BCKS-06-NMB-A174-FR022	C115366-2611B
	A	340107231B NMBA-A174	C115366-2612D	DA-BCKS-06-NMB-A174-FR022	C115366-2612B
	B	340107232B NMBA-A174	C115366-2613D	DB-BCKS-06-NMB-A174-FR022	C115366-2613B
	C	340107233B NMBA-A174	C115366-2614D	DC-BCKS-06-NMB-A174-FR022	C115366-2614B
	D	340107234B NMBA-A174	C115366-2615D	DD-BCKS-06-NMB-A174-FR022	C115366-2615B
	F	340107276B NMB-A174	C115366-2691D	DF-BCKS-05-NMB-A174-FR022	C115366-2691B
Gold	E	340107230B NMBA	C115366-2611C	DE-BCKS-06-NMB-FR172-FR022	C115366-2611A
	A	340107231B NMBA	C115366-2612C	DA-BCKS-06-NMB-FR172-FR022	C115366-2612A
	B	340107232B NMBA	C115366-2613C	DB-BCKS-06-NMB-FR172-FR022	C115366-2613A
	C	340107233B NMBA	C115366-2614C	DC-BCKS-06-NMB-FR172-FR022	C115366-2614A
	D	340107234B NMBA	C115366-2615C	DD-BCKS-06-NMB-FR172-FR022	C115366-2615A
	F	340107276B NMB	C115366-2691C	DF-BCKS-05-NMB-FR172-FR022	C115366-2691A

Straight Cable Outlet

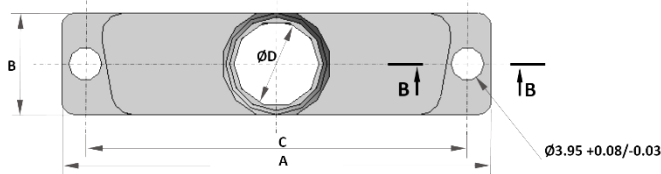


Dimensions and Weight

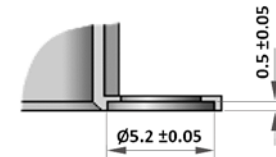


Size	A ±0.2	B ±0.15	C ±0.13	D ±0.20	E ±0.15	Weight (grams)
E	30.68	12.50	24.99	7.00	9.00	6.5
A	39.01	12.50	33.32	10.00	12.00	8.5
B	52.91	12.50	47.04	10.50	12.50	11.5
C	69.19	12.50	63.50	10.50	12.50	13.5
D	66.80	15.30	61.11	13.30	15.30	14.5
F	69.30	17.30	63.50	15.30	17.30	16.5

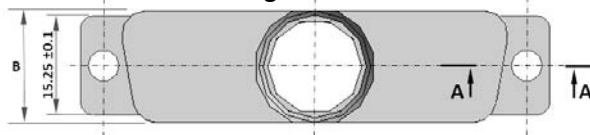
Configuration Sizes E-A-B-C-D



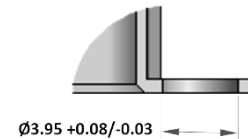
Detail B-B



Configuration Size F



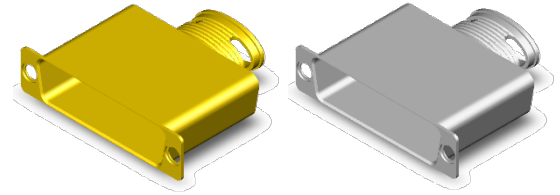
Detail A-A



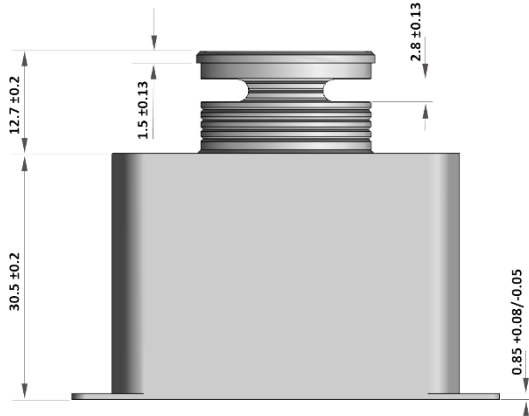
Description and Part Numbers

Finish	Size	ESA/ESCC Quality Level		FR022 Quality Level	
		Description	P/N	Description	P/N
Electroless Nickel	E	340107235B NMBA-A174	C115366-2616D	DE-BCKS-07-NMB-A174-FR022	C115366-2616B
	A	340107236B NMBA-A174	C115366-2617D	DA-BCKS-07-NMB-A174-FR022	C115366-2617B
	B	340107237B NMBA-A174	C115366-2618D	DB-BCKS-07-NMB-A174-FR022	C115366-2618B
	C	340107238B NMBA-A174	C115366-2619D	DC-BCKS-07-NMB-A174-FR022	C115366-2619B
	D	340107239B NMBA-A174	C115366-2620D	DD-BCKS-07-NMB-A174-FR022	C115366-2620B
	F	340107277B NMB-A174	C115366-2692D	DF-BCKS-07-NMB-A174-FR022	C115366-2692B
Gold	E	340107235B NMBA	C115366-2616C	DE-BCKS-07-NMB-FR172-FR022	C115366-2616A
	A	340107236B NMBA	C115366-2617C	DA-BCKS-07-NMB-FR172-FR022	C115366-2617A
	B	340107237B NMBA	C115366-2618C	DB-BCKS-07-NMB-FR172-FR022	C115366-2618A
	C	340107238B NMBA	C115366-2619C	DC-BCKS-07-NMB-FR172-FR022	C115366-2619A
	D	340107239B NMBA	C115366-2620C	DD-BCKS-07-NMB-FR172-FR022	C115366-2620A
	F	340107277B NMB	C115366-2692C	DF-BCKS-07-NMB-FR172-FR022	C115366-2692A

Ultra-Elliptical Band Termination

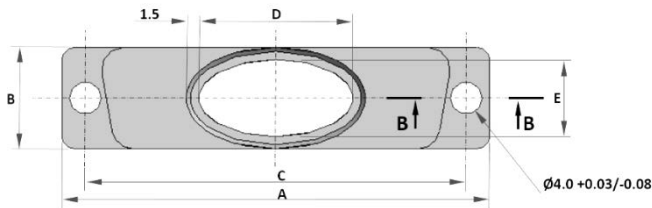


Dimensions and Weight

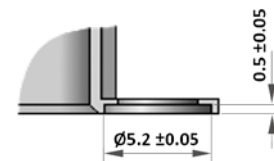


Size	A ±0.2	B ±0.15	C ±0.13	D ±0.38	E ±0.15	Weight (grams)
E	30.68	12.50	24.99	12.70	9.50	8
A	39.01	12.50	33.32	15.87	9.50	13
B	52.91	12.50	47.04	19.05	9.50	18
C	69.19	12.50	63.50	25.40	9.50	23
D	66.80	15.30	61.11	22.22	12.30	28
F	69.30	17.30	63.50	32.00	14.30	33

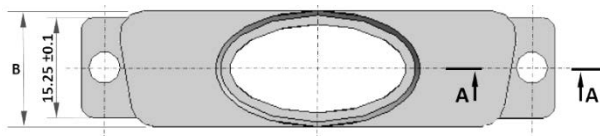
Configuration Sizes E-A-B-C-D



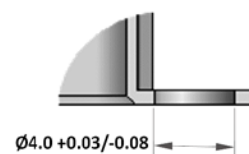
Detail B-B



Configuration Size F



Detail A-A

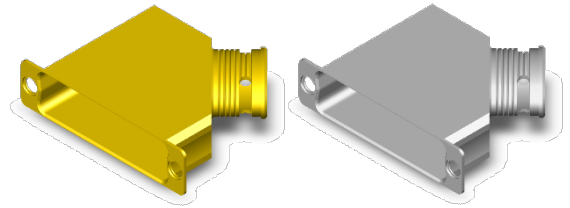


Description and Part Numbers

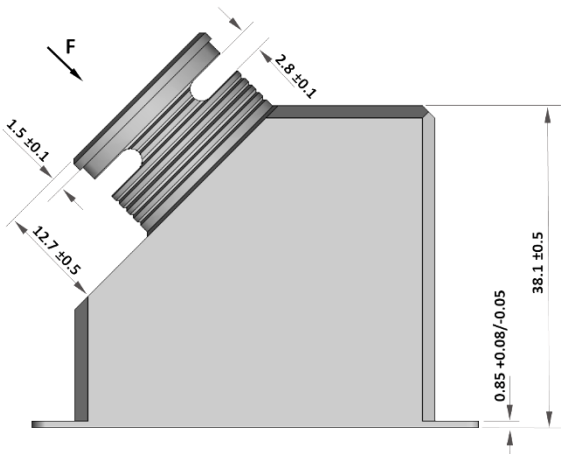
Finish	Size	ESA/ESCC Quality Level		FR022 Quality Level	
		Description	P/N	Description	P/N
Electroless Nickel	E	340107246B NMBA-A174	C115366-2622D	DE-BCKS-11-NMB-A174-FR022	C115366-2622B
	A	340107247B NMBA-A174	C115366-2623D	DA-BCKS-11-NMB-A174-FR022	C115366-2623B
	B	340107248B NMBA-A174	C115366-2624D	DB-BCKS-11-NMB-A174-FR022	C115366-2624B
	C	340107249B NMBA-A174	C115366-2625D	DC-BCKS-11-NMB-A174-FR022	C115366-2625B
	D	340107250B NMBA-A174	C115366-2626D	DD-BCKS-11-NMB-A174-FR022	C115366-2626B
	F	340107278B NMB-A174	C115366-2693D	DF-BCKS-11-NMB-A174-FR022	C115366-2693B
Gold	E	340107246B NMBA	C115366-2622C	DE-BCKS-11-NMB-FR172-FR022	C115366-2622A
	A	340107247B NMBA	C115366-2623C	DA-BCKS-11-NMB-FR172-FR022	C115366-2623A
	B	340107248B NMBA	C115366-2624C	DB-BCKS-11-NMB-FR172-FR022	C115366-2624A
	C	340107249B NMBA	C115366-2625C	DC-BCKS-11-NMB-FR172-FR022	C115366-2625A
	D	340107250B NMBA	C115366-2626C	DD-BCKS-11-NMB-FR172-FR022	C115366-2626A
	F	340107278B NMB	C115366-2693C	DF-BCKS-11-NMB-FR172-FR022	C115366-2693A

45° Ultra Elliptical Band Termination Right Outlet

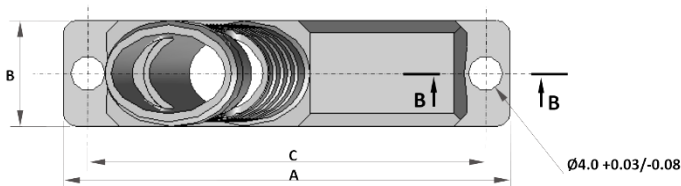
(Our design accepts right or left mounting)



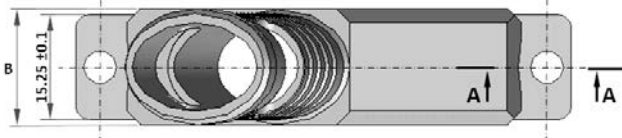
Dimensions and Weight



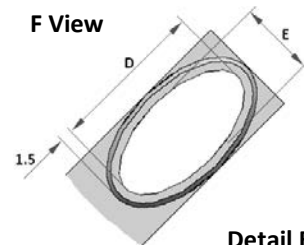
Configuration Sizes E-A-B-C-D



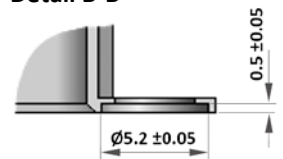
Configuration Size F



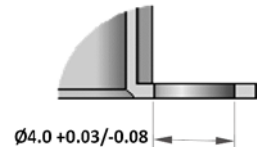
Size	A ±0.2	B ±0.15	C ±0.13	D ±0.38	E ±0.15	Weight (grams)
E	30.68	12.50	24.99	12.70	9.50	10
A	39.01	12.50	33.32	15.87	9.50	14
B	52.91	12.50	47.04	19.05	9.50	20
C	69.19	12.50	63.50	25.40	9.50	26
D	66.80	15.30	61.11	22.22	12.30	33
F	69.30	17.30	63.50	29.00	14.30	40



Detail B-B



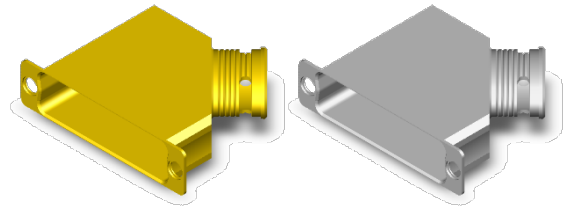
Detail A-A



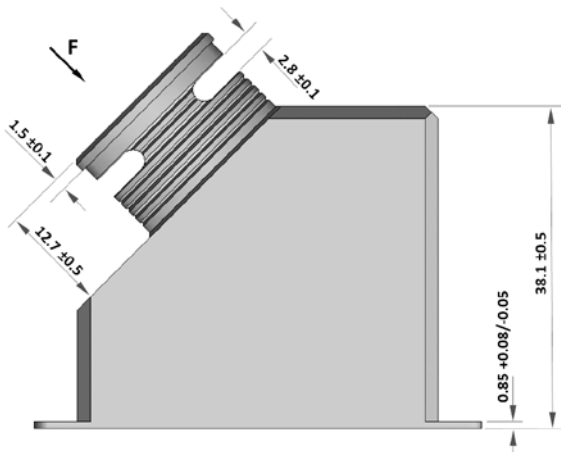
Description and Part Numbers

Finish	Size	ESA/ESCC Quality Level		FR022 Quality Level	
		Description	P/N	Description	P/N
Electroless Nickel	E	340107251B NMBA-A174	C115366-2627D	DE-BCKS-08-NMB-A174-FR022	C115366-2627B
	A	340107252B NMBA-A174	C115366-2628D	DA-BCKS-08-NMB-A174-FR022	C115366-2628B
	B	340107253B NMBA-A174	C115366-2629D	DB-BCKS-08-NMB-A174-FR022	C115366-2629B
	C	340107254B NMBA-A174	C115366-2630D	DC-BCKS-08-NMB-A174-FR022	C115366-2630B
	D	340107255B NMBA-A174	C115366-2631D	DD-BCKS-08-NMB-A174-FR022	C115366-2631B
	F	340107279B NMB-A174	C115366-2694D	DF-BCKS-08-NMB-A174-FR022	C115366-2694B
Gold	E	340107251B NMBA	C115366-2627C	DE-BCKS-08-NMB-FR172-FR022	C115366-2627A
	A	340107252B NMBA	C115366-2628C	DA-BCKS-08-NMB-FR172-FR022	C115366-2628A
	B	340107253B NMBA	C115366-2629C	DB-BCKS-08-NMB-FR172-FR022	C115366-2629A
	C	340107254B NMBA	C115366-2630C	DC-BCKS-08-NMB-FR172-FR022	C115366-2630A
	D	340107255B NMBA	C115366-2631C	DD-BCKS-08-NMB-FR172-FR022	C115366-2631A
	F	340107279B NMB	C115366-2694C	DF-BCKS-08-NMB-FR172-FR022	C115366-2694A

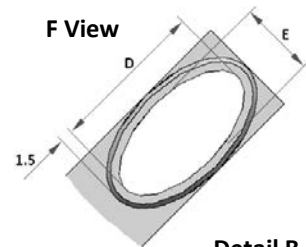
45° Ultra Elliptical Band Termination Left Outlet *(Our design accepts right or left mounting)*



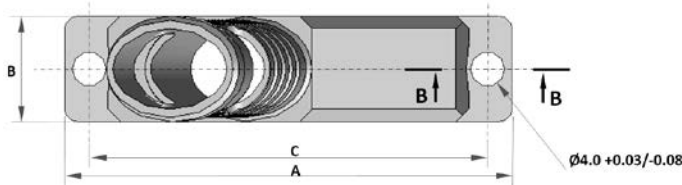
Dimensions and Weight



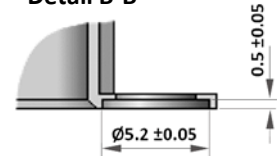
Size	A ±0.2	B ±0.15	C ±0.13	D ±0.38	E ±0.15	Weight (grams)
E	30.68	12.50	24.99	12.70	9.50	10
A	39.01	12.50	33.32	15.87	9.50	14
B	52.91	12.50	47.04	19.05	9.50	20
C	69.19	12.50	63.50	25.40	9.50	26
D	66.80	15.30	61.11	22.22	12.30	33
F	69.30	17.30	63.50	29.00	14.30	40



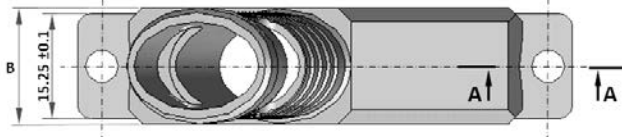
Configuration Sizes E-A-B-C-D



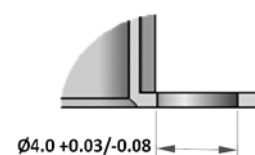
Detail B-B



Configuration Size F



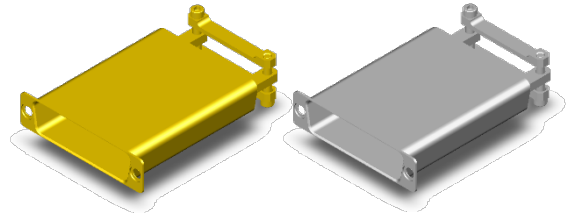
Detail A-A



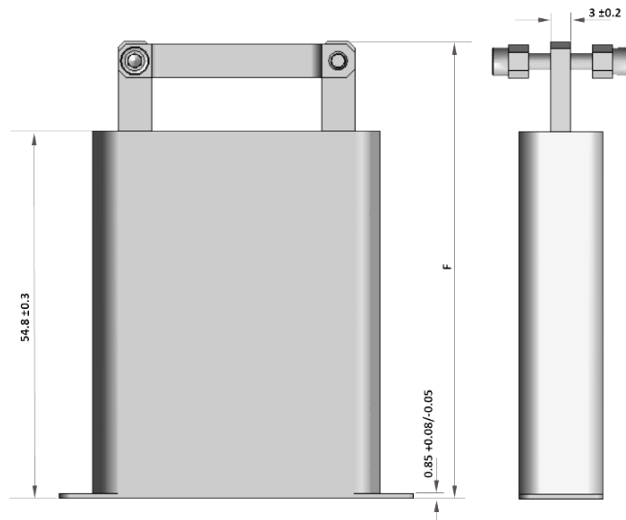
Description and Part Numbers

Finish	Size	ESA/ESCC Quality Level		FR022 Quality Level	
		Description	P/N	Description	P/N
Electroless Nickel	E	340107256B NMBA-A174	C115366-2632D	DE-BCKS-09-NMB-A174-FR022	C115366-2632B
	A	340107257B NMBA-A174	C115366-2633D	DA-BCKS-09-NMB-A174-FR022	C115366-2633B
	B	340107258B NMBA-A174	C115366-2634D	DB-BCKS-09-NMB-A174-FR022	C115366-2634B
	C	340107259B NMBA-A174	C115366-2635D	DC-BCKS-09-NMB-A174-FR022	C115366-2635B
	D	340107260B NMBA-A174	C115366-2636D	DD-BCKS-09-NMB-A174-FR022	C115366-2636B
	F	340107279B NMB-A174	C115366-2694D	DF-BCKS-08-NMB-A174-FR022	C115366-2694B
Gold	E	340107256B NMBA	C115366-2632C	DE-BCKS-09-NMB-FR172-FR022	C115366-2632A
	A	340107257B NMBA	C115366-2633C	DA-BCKS-09-NMB-FR172-FR022	C115366-2633A
	B	340107258B NMBA	C115366-2634C	DB-BCKS-09-NMB-FR172-FR022	C115366-2634A
	C	340107259B NMBA	C115366-2635C	DC-BCKS-09-NMB-FR172-FR022	C115366-2635A
	D	340107260B NMBA	C115366-2636C	DD-BCKS-09-NMB-FR172-FR022	C115366-2636A
	F	340107279B NMB	C115366-2694C	DF-BCKS-08-NMB-FR172-FR022	C115366-2694A

Saddle Clamp for Straight Relief

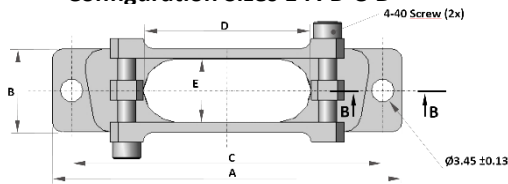


Dimensions and Weight

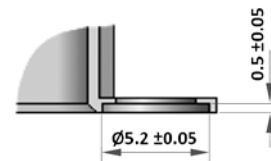


Size	A ±0.2	B ±0.15	C ±0.13	D ±0.30	E ±0.25	F ±0.50	Weight (grams)
E	30.68	12.50	24.99	9.50	9.50	66.75	15.5
A	39.01	12.50	33.32	18.10	9.50	66.75	19
B	52.91	12.50	47.04	25.40	9.50	68.35	23
C	69.19	12.50	63.50	34.90	9.50	68.35	29
D	66.80	15.30	61.11	35.70	11.90	68.35	33
F	69.30	17.30	63.50	47.00	13.90	68.35	37

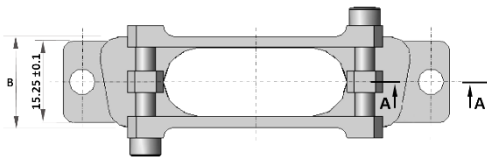
Configuration Sizes E-A-B-C-D



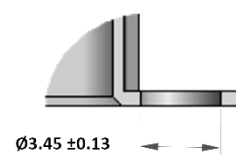
Detail B-B



Configuration Size F



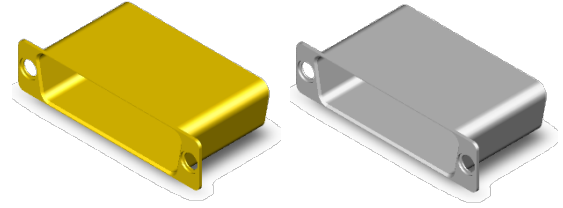
Detail A-A



Description and Part Numbers

Finish	Size	ESA/ESCC Quality Level		FR022 Quality Level	
		Description	P/N	Description	P/N
Electroless Nickel	E	340107205B NMBA-A174	C115366-2586D	DE-BCKS-01-NMB-A174-FR022	C115366-2586B
	A	340107206B NMBA-A174	C115366-2587D	DA-BCKS-01-NMB-A174-FR022	C115366-2587B
	B	340107207B NMBA-A174	C115366-2588D	DB-BCKS-01-NMB-A174-FR022	C115366-2588B
	C	340107208B NMBA-A174	C115366-2589D	DC-BCKS-01-NMB-A174-FR022	C115366-2589B
	D	340107209B NMBA-A174	C115366-2590D	DD-BCKS-01-NMB-A174-FR022	C115366-2590B
	F	340107272B NMB-A174	C115366-2687D	DF-BCKS-01-NMB-A174-FR022	C115366-2687B
Gold	E	340107205B NMBA	C115366-2586C	DE-BCKS-01-NMB-FR172-FR022	C115366-2586A
	A	340107206B NMBA	C115366-2587C	DA-BCKS-01-NMB-FR172-FR022	C115366-2587A
	B	340107207B NMBA	C115366-2588C	DB-BCKS-01-NMB-FR172-FR022	C115366-2588A
	C	340107208B NMBA	C115366-2589C	DC-BCKS-01-NMB-FR172-FR022	C115366-2589A
	D	340107209B NMBA	C115366-2590C	DD-BCKS-01-NMB-FR172-FR022	C115366-2590A
	F	340107272B NMB	C115366-2687C	DF-BCKS-01-NMB-FR172-FR022	C115366-2687A

Shorting Can

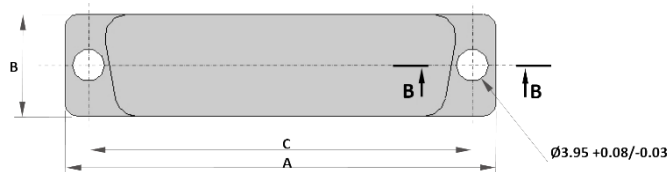


Dimensions and Weight

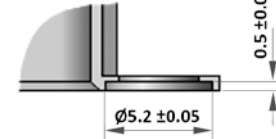


Size	A ±0.2	B ±0.15	C ±0.13	Weight (grams)
E	30.68	12.50	24.99	8
A	39.01	12.50	33.32	10
B	52.91	12.50	47.04	14
C	69.19	12.50	63.50	20
D	66.80	15.30	61.11	26
F	69.30	17.30	63.50	30

Configuration Sizes E-A-B-C-D



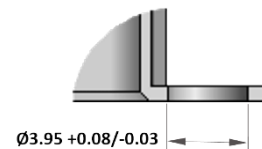
Detail B-B



Configuration Size F



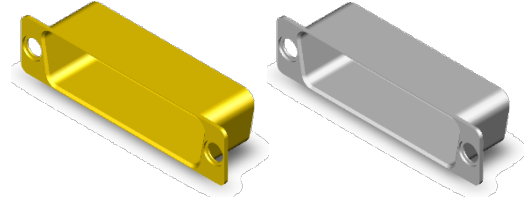
Detail A-A



Description and Part Numbers

Finish	Size	ESA/ESCC Quality Level		FR022 Quality Level	
		Description	P/N	Description	P/N
Electroless Nickel	E	340107210B NMBA-A174	C115366-2591D	DE-BCKS-02-NMB-A174-FR022	C115366-2591B
	A	340107211B NMBA-A174	C115366-2592D	DA-BCKS-02-NMB-A174-FR022	C115366-2592B
	B	340107212B NMBA-A174	C115366-2593D	DB-BCKS-02-NMB-A174-FR022	C115366-2593B
	C	340107213B NMBA-A174	C115366-2594D	DC-BCKS-02-NMB-A174-FR022	C115366-2594B
	D	340107214B NMBA-A174	C115366-2595D	DD-BCKS-02-NMB-A174-FR022	C115366-2595B
	F	340107273B NMB-A174	C115366-2688D	DF-BCKS-02-NMB-A174-FR022	C115366-2688B
Gold	E	340107210B NMBA	C115366-2591C	DE-BCKS-02-NMB-FR172-FR022	C115366-2591A
	A	340107211B NMBA	C115366-2592C	DA-BCKS-02-NMB-FR172-FR022	C115366-2592A
	B	340107212B NMBA	C115366-2593C	DB-BCKS-02-NMB-FR172-FR022	C115366-2593A
	C	340107213B NMBA	C115366-2594C	DC-BCKS-02-NMB-FR172-FR022	C115366-2594A
	D	340107214B NMBA	C115366-2595C	DD-BCKS-02-NMB-FR172-FR022	C115366-2595A
	F	340107273B NMB	C115366-2688C	DF-BCKS-02-NMB-FR172-FR022	C115366-2688A

Extra Shorting Can

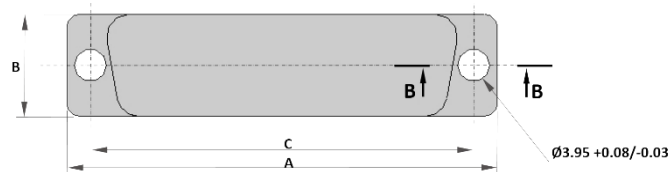


Dimensions and Weight

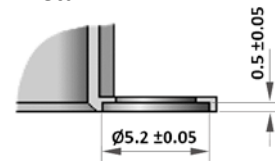


Size	A ±0.2	B ±0.15	C ±0.13	Weight (grams)
E	30.68	12.50	24.99	8
A	39.01	12.50	33.32	10
B	52.91	12.50	47.04	14
C	69.19	12.50	63.50	20
D	66.80	15.30	61.11	26
F	69.30	17.30	63.50	30

Configuration Sizes E-A-B-C-D



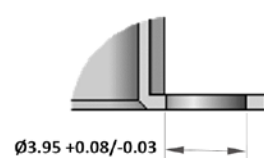
Detail B-B



Configuration Size F



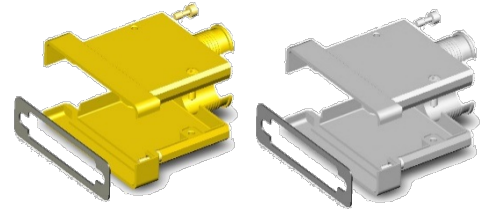
Detail A-A



Description and Part Numbers

Finish	Size	ESA/ESCC Quality Level		FR022 Quality Level	
		Description	P/N	Description	P/N
Electroless Nickel	E	340107261B NMBA-A174	C115366-2637D	DE-BCKS-10-NMB-A174-FR022	C115366-2637B
	A	340107262B NMBA-A174	C115366-2638D	DA-BCKS-10-NMB-A174-FR022	C115366-2638B
	B	340107263B NMBA-A174	C115366-2639D	DB-BCKS-10-NMB-A174-FR022	C115366-2639B
	C	340107264B NMBA-A174	C115366-2640D	DC-BCKS-10-NMB-A174-FR022	C115366-2640B
	D	340107265B NMBA-A174	C115366-2641D	DD-BCKS-10-NMB-A174-FR022	C115366-2641B
	F	340107280B NMB-A174	C115366-2695D	DF-BCKS-10-NMB-A174-FR022	C115366-2695B
Gold	E	340107261B NMBA	C115366-2637C	DE-BCKS-10-NMB-FR172-FR022	C115366-2637A
	A	340107262B NMBA	C115366-2638C	DA-BCKS-10-NMB-FR172-FR022	C115366-2638A
	B	340107263B NMBA	C115366-2639C	DB-BCKS-10-NMB-FR172-FR022	C115366-2639A
	C	340107264B NMBA	C115366-2640C	DC-BCKS-10-NMB-FR172-FR022	C115366-2640A
	D	340107265B NMBA	C115366-2641C	DD-BCKS-10-NMB-FR172-FR022	C115366-2641A
	F	340107280B NMB	C115366-2695C	DF-BCKS-10-NMB-FR172-FR022	C115366-2695A

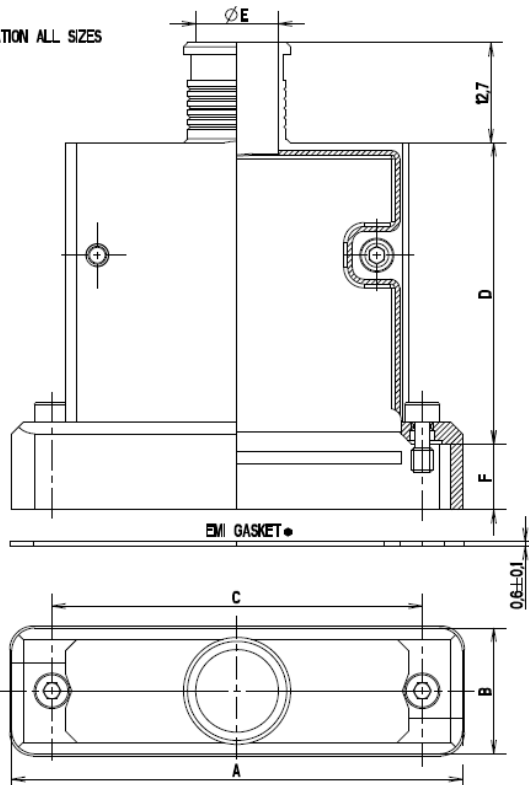
Straight Cable Outlet for EMI Application
(EMI performances linked to the design of the harness)



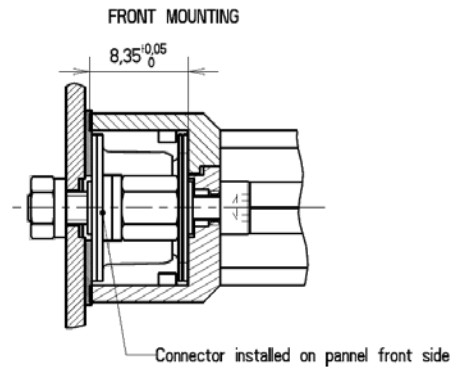
Dimensions and Weight

Front Mounting Only

CONFIGURATION ALL SIZES





Size	A ±0.25	B ±0.25	C ±0.13	D ±0.30	E ±0.25	F +0.05/0	Weight (grams)
E	35.03	15.98	24.99	32.70	6.73	8.35	21
A	43.36	15.98	33.32	32.70	9.90	8.35	26
B	57.25	15.98	47.04	38.30	10.54	8.35	30
C	73.53	15.98	63.50	38.30	10.54	8.35	35
D	71.14	18.75	61.11	38.30	13.33	8.35	40



Description and Part Numbers

Finish	Size	ESA/ESCC Quality Level		FR022 Quality Level	
		Description	P/N	Description	P/N
Electroless Nickel	E	340107215B NMBA-A174	C115366-2596D	DE-BCKS-03-NMB-A174-FR022	C115366-2596B
	A	340107216B NMBA-A174	C115366-2597D	DA-BCKS-03-NMB-A174-FR022	C115366-2597B
	B	340107217B NMBA-A174	C115366-2598D	DB-BCKS-03-NMB-A174-FR022	C115366-2598B
	C	340107218B NMBA-A174	C115366-2599D	DC-BCKS-03-NMB-A174-FR022	C115366-2599B
	D	340107219B NMBA-A174	C115366-2600D	DD-BCKS-03-NMB-A174-FR022	C115366-2600B
Gold	E	340107215B NMBA	C115366-2596C	DE-BCKS-03-NMB-FR172-FR022	C115366-2596A
	A	340107216B NMBA	C115366-2597C	DA-BCKS-03-NMB-FR172-FR022	C115366-2597A
	B	340107217B NMBA	C115366-2598C	DB-BCKS-03-NMB-FR172-FR022	C115366-2598A
	C	340107218B NMBA	C115366-2599C	DC-BCKS-03-NMB-FR172-FR022	C115366-2599A
	D	340107219B NMBA	C115366-2600C	DD-BCKS-03-NMB-FR172-FR022	C115366-2600A

Accessories

Universal Male Screwlock Slotted Head Screw	ESA/ESCC Quality Level		FR022 Quality Level	
	Description	P/N	Description	P/N
	340102287B NMB	C115366-2408C	D115440-0165-FR022	C115440-0165A
Hexagonal Hole Head Screw	Description	P/N	Description	P/N
	340102289B NMB	C115366-2410C	D115440-0167-FR022	C115440-0167A

For the complete range of accessories and details, consult our D-Sub accessories datasheet.