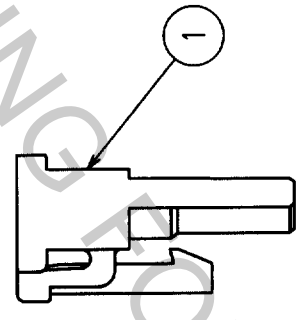
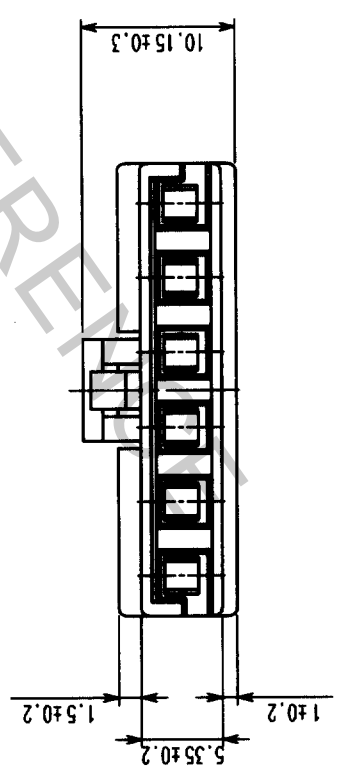
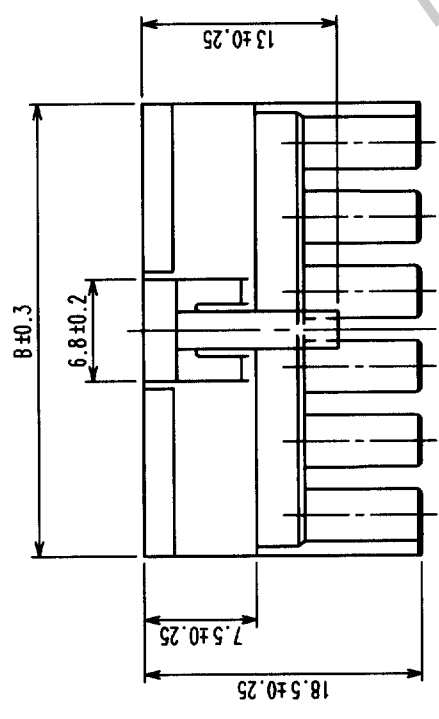
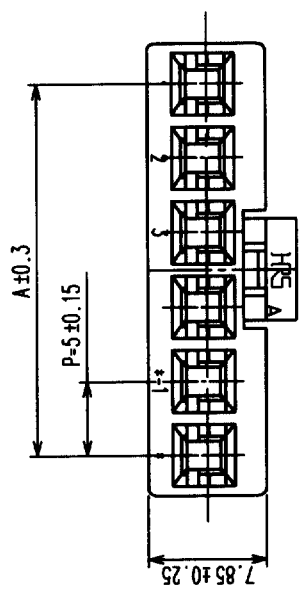


1 2 3 4 5 6 7 8

A B C D E F



PRODUCT NO.	HRS NO.	CONTACTS	A	B
DF5A-2S-5C	CL676-0007-8	2	5	10.5
DF5A-3S-5C	CL676-0008-0	3	10	15.5
DF5A-4S-5C	CL676-0009-3	4	15	20.5
DF5A-5S-5C	CL676-0010-2	5	20	25.5
DF5A-6S-5C	CL676-0011-5	6	25	30.5
DF5A-7S-5C	CL676-0012-8	7	30	35.5
DF5A-8S-5C	CL676-0013-0	8	35	40.5
DF5A-9S-5C	CL676-0014-3	9	40	45.5
DF5A-10S-5C	CL676-0015-6	10	45	50.5

COUNT	DESCRIPTION OF REVISIONS	BY	CHKD	DATE	COUNT	DESCRIPTION OF REVISIONS	BY	CHKD	DATE
△					△				
△					△				
△					△				

NOTE 1: A PACKAGING QUANTITY IS DELIVERED BY THE BAG UNIT(100 PCS.)

NO.	MATERIAL	FINISH, REMARKS	NO.	MATERIAL	FINISH, REMARKS
1	POLYAMIDE	NATURAL (WHITE)	1	POLYAMIDE	NATURAL (WHITE), UL94V-0
CL	CL		CL	CL	
DRAWING NO.		EDC3-160243	PART NO.		DF5A-S-5C
SCALE		2 : 1	CODE NO.		CL676
UNITS		MM	DESIGNED		IDENPOUYA
			CHECKED		H. Iwashita
			APPROVED		K. Katayama
			RELEASED		

TO	