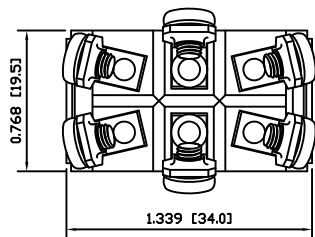


**MATERIALS**

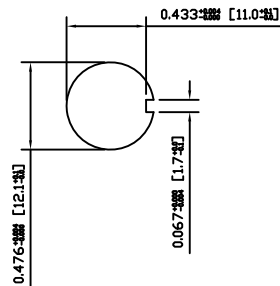
- BODY:**  
Phenolic, UL94 V-0
- ACTUATOR:**  
Nickel Plated Brass
- BUSHING:**  
Nickel Plated Brass
- HOUSING:**  
Stainless Steel
- HARDWARE:**  
Nickel Plated Steel
- FUNCTION PLATE:**  
Stainless Steel
- SPACER PLATE:**  
Laminate Board
- SPRING:**  
Steel
- PLUNGER:**  
Nylon
- MOBILE CONTACT:**  
Silver Plated Copper
- MOBILE CONTACT PIVOT:**  
Silver Plated Copper
- CONTACTS:**  
Silver Alloy Clad Copper
- TERMINALS:**  
Brass  
Steel

**SPECIFICATIONS**

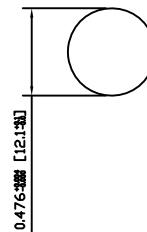
- FUNCTION:**  
2P2T ON-OFF-ON
- RATINGS:**  
ANSI/UL1054 and CAN/CSA C22.2 No.55 (E194579):  
20A 125VAC [cURus]  
15A 277VAC [cURus]  
2HP 125/277VAC [cURus]
- CONTACT RESISTANCE:**  
Initial: 50mΩ Max. at 50VAC
- INSULATION RESISTANCE:**  
800MΩ Min. at 500VDC
- DIELECTRIC STRENGTH:**  
1,500VAC for 1 Minute
- OPERATING LIFE:**  
6,000 Cycles [cURus]
- TEMPERATURE:**  
Operating: -20°C to 85°C [cURus]
- APPROVALS:**



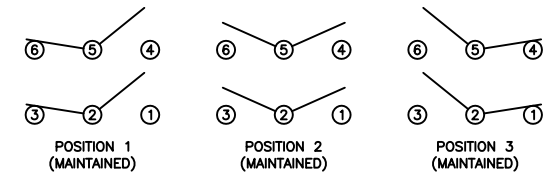
**SUGGESTED PANEL CUTOUT**



**ALTERNATE PANEL CUTOUT**



**SCHEMATIC**



ACTUATOR	B	10/11/16	CAB
BODY	C	11/02/14	CAB
MATERIALS	A	09/06/03	CAB
SPECIFICATIONS	A	09/06/03	CAB
REFERENCE	REV.	DATE	BY

THE INFORMATION CONTAINED IN THIS DOCUMENT IS PROPRIETARY TO E-SWITCH AND IS NOT TO BE COPIED OR TRANSFERRED

C	CORRECTED THREADING	19877	11/02/14	CAB
B	CORRECTED PANEL CUTOUT DIMENSIONS	19380	10/11/16	CAB
A	INITIAL RELEASE	PCRD0051	09/06/05	CAB
REV.	DESCRIPTION	PCR	DATE	DRAWN BY

DIMENSIONS	
INCHES [MILLIMETERS]	
GENERAL TOLERANCES	
0.000~0.236: ±0.004 [0~6: ±0.1]	
0.236~1.181: ±0.012 [6~30: ±0.3]	
1.181~4.724: ±0.020 [30~120: ±0.5]	
SCALE	PROJECTION
DRAWING NOT TO SCALE	1st Angle

<b>ST266D00</b>		
ITEM NUMBER	DATE	REVISION
34-ST266D00	FEBRUARY 14, 2011	C