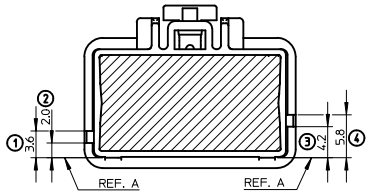
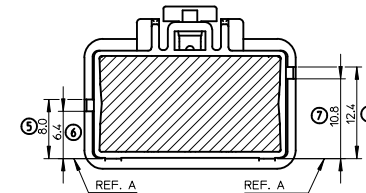


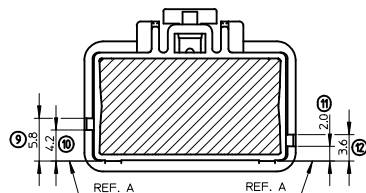
**CODINGS** FRONT VIEW WITHOUT TPA (SCALE 2.5:1)



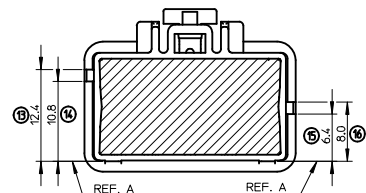
WHITE COLOR - 0989061010



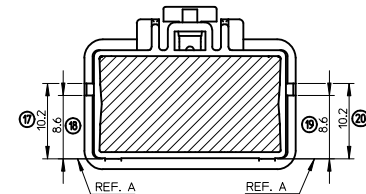
BLACK COLOR - 0989061011



GREEN COLOR - 0989061015

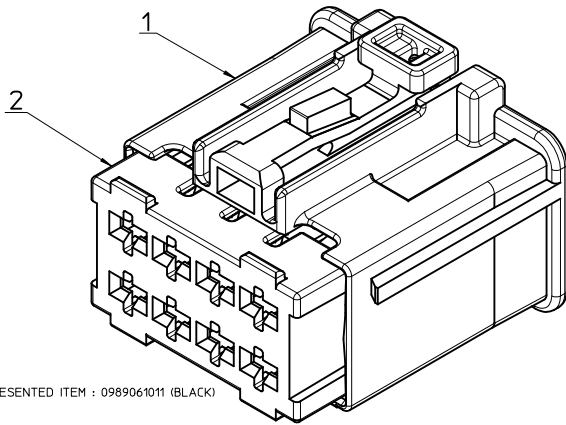
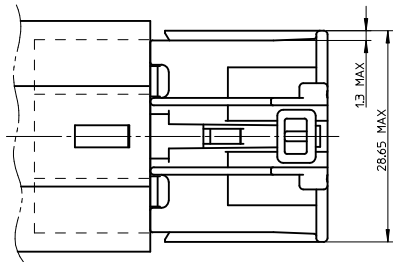
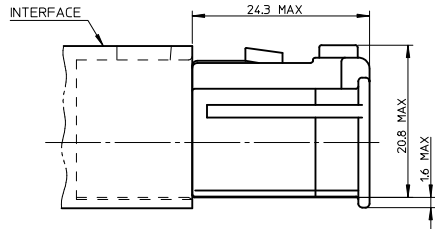


GREY COLOR - 0989061018



BROWN COLOR - 0989061019

**MATING AND UNMATING**



REPRESENTED ITEM : 0989061011 (BLACK)

ITEM	QTY	PART NAME	COLOR	MOLEX MAT.-NO.	MATERIAL	WEIGHT (g)
2	1	TPA	YELLOW	0989060014		
		UCC RCPT CONN 2.8 8CKT	BROWN	0989060019		
		UCC RCPT CONN 2.8 8CKT	GREY	0989060018	POLYESTER (PBT)	6.475
		UCC RCPT CONN 2.8 8CKT	GREEN	0989060015		
		UCC RCPT CONN 2.8 8CKT	BLACK	0989060011		
		UCC RCPT CONN 2.8 8CKT	WHITE	0989060010		

INSPECTION BALLOON NUMBER LOG	
PER DRAWING REVISION: A	
LAST BALLOON NUMBER USED: 28	
ADDED BALLOON NUMBERS: NONE	
REMOVED BALLOON NUMBERS: NONE	

**MARKINGS**

- [1] ASSY REVISION LEVEL
- [2] ENGINEERING CONTROL ID
- [3] REF. MOLEX 5 DIGITS
- [4] RCPT MATERIAL
- [4.2] TPA MATERIAL
- [5] RCPT MOLD CAVITY NUMBER
- [5.2] TPA MOLD CAVITY NUMBER
- [6] RCPT DATUM
- [6.2] TPA DATUM
- [7] CAVITIES IDENTIFICATION
- [8] RCPT MOLD REVISION LEVEL
- [8.2] TPA MOLD REVISION LEVEL

**NOTES**

- MATERIAL : SEE CHART
- PRODUCT SPECIFICATION : AS-98906-001
- THIS FEMALE CONNECTOR FITS INTO A HEADER DEFINED ON DRAWING : SD-98906-003
- PACKAGING SPECIFICATION : PK-98906-001
- TEMPERATURE CLASS : -40°C/+85°C
- TERMINALS USED : 2.8 SMDZ

TABLE OF CONTENTS	
SHEET 2	GENERAL VIEWS
SHEET 1	NOTES - BOM - ISO VIEW - CODINGS

REVISED EEC NO: G2012-0160 DRW:PBOSQUAIN 2012/03/14 CHK:OPLESSIS 2012/03/14 APPR:JDUCCLOS 2012/04/27 A	QUALITY SYMBOLS ∇-0 ∇-0 ∇-0	GENERAL TOLERANCES (UNLESS SPECIFIED) mm INCH 4 PLACES ± --- + --- 3 PLACES ± --- + --- 2 PLACES ± --- + --- 1 PLACE ± 0.1 + --- 0 PLACE ± --- + --- ANGULAR ± --- °	DIMENSION STYLE MM ONLY DRAWN BY: PBOSQUAIN CHECKED BY: OPLESSIS APPROVED BY: DATE: 2012/03/14	SCALE: 5:1 DESIGN UNITS: METRIC FIRST ANGLE PROJECTION	TITLE: UCC RCPT CONN 2.8 8CKT UNSEALED ASSY
		MATERIAL NO. SEE CHART DOCUMENT NO. SD-98906-001	SHEET NO. 1 OF 2		
		THIS DRAWING CONTAINS INFORMATION THAT IS PROPRIETARY TO MOLEX INCORPORATED AND SHOULD NOT BE USED WITHOUT WRITTEN PERMISSION			
		mox			

UPDATE : MARKINGS POSITION - NOTES ADD CAVITIES POSITION DIMENSIONS

