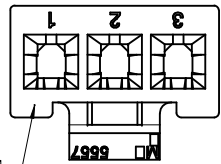


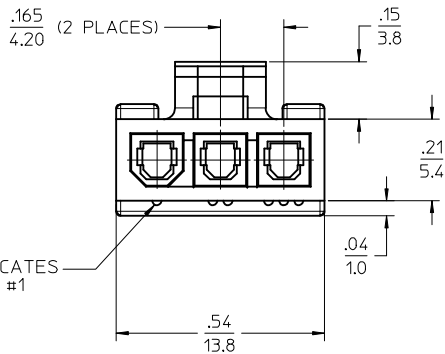
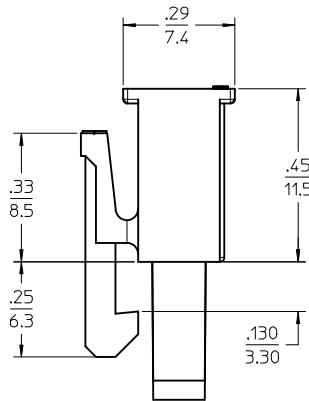
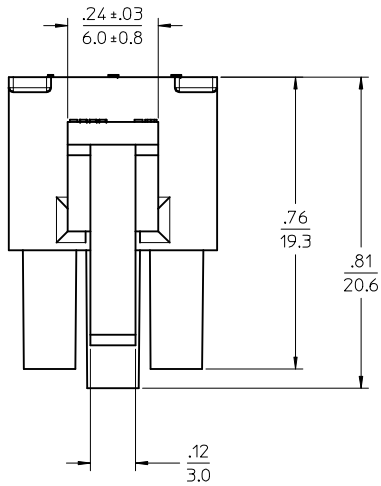
PART NO.	ENG. NO.	CKT SIZE	MATERIAL (SEE NOTE 1)
50-29-1662	5557-03R2-225	3	UL 94V-2, BLACK

LEGEND

5557-03R2-225
 CKT SIZE
 RECEPTACLE
 MATERIAL OPTION (SEE NOTE 1)



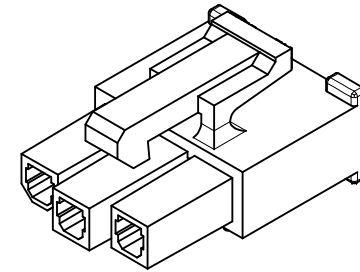
SEE NOTE 11



RIB INDICATES CIRCUIT #1

NOTES:

- MATERIAL:
 225=NYLON (PA6), UL94V-2, COLOR: BLACK,
 IEC 60335-1, 4th EDITION GLOW WIRE CAPABLE
- FINISH: NOT APPLICABLE
- PRODUCT SPECIFICATION: PS-5556-001
- PACKAGING: PK-5557-002
- PART MATES WITH MOLEX RIGHT ANGLE HEADER #5569-03A*, VERTICAL HEADER #5566-03A3* AND PLUG #5559-03P*.
- PART TO BE USED WITH MOLEX FEMALE TERMINAL #5556.
- WHEN MATING WITH ANOTHER CONNECTOR, THE CENTER CIRCUIT WILL "MAKE FIRST AND BREAK LAST".
- PART IS NOT DESIGNED FOR CURRENT SHARING.
- CONNECTOR ASSEMBLIES ARE NOT TO BE MATED OR UNMATED WHILE CIRCUITS ARE LIVE.
- WIRES ARE TO BE DRESSED IN SUCH A MANNER TO ALLOW THE TERMINALS TO FLOAT FREELY IN THE POCKET.
- *MX* FACTORY ID MAY BE LOCATED ON LATCH OR SURFACE INDICATED. CAVITY NO. MAY BE LOCATED ON EITHER SIDE OF SERIES NO. ON LATCH.
- PART CONFORMS TO CLASS "B" REQUIREMENTS OF COSMETIC SPECIFICATION PS-45499-002 WITH THE EXCEPTION OF DISCOLORATION, FLASH AND SINK MEET CLASS "C" REQUIREMENTS.



CHANGE MATERIAL EC NO: UCP2013-1694 DRWN:BBEE 2012/10/30 CHKD:JBELL 2012/10/30 APPR:FSMITH 2012/11/20	QUALITY SYMBOLS ▽=0 ▽=0 ▽=0	GENERAL TOLERANCES (UNLESS SPECIFIED)		DIMENSION STYLE	SCALE	DESIGN UNITS	THIRD ANGLE PROJECTION
		mm	INCH	IN/MM	4:1	METRIC	
REV B	DESCRIPTION	4 PLACES	± .010	CLS	DATE	3 CIRCUIT RECEPTACLE, (MINI-FIT JR.) (MAKE-FIRST/BREAK-LAST)	
		3 PLACES	± .015	CHECKED BY	DATE		
		2 PLACES	± 0.25	GEP	2004/09/29		
		1 PLACE	± 0.38	APPROVED BY	DATE		
		0 PLACE	±	YM	2004/09/29		
ANGULAR ±1/2°		MATERIAL NO.		DOCUMENT NO.			SHEET NO. 1 OF 1
DRAFT WHERE APPLICABLE MUST REMAIN WITHIN DIMENSIONS		SEE CHART		SD-5557-225			
THIS DRAWING CONTAINS INFORMATION THAT IS PROPRIETARY TO MOLEX INCORPORATED AND SHOULD NOT BE USED WITHOUT WRITTEN PERMISSION							