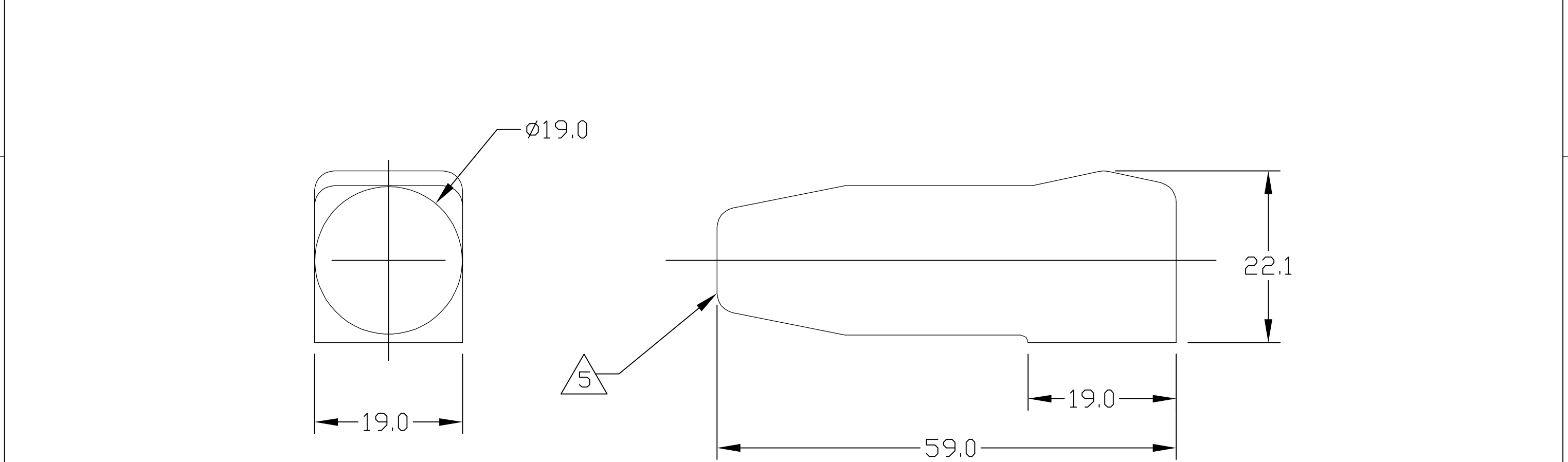


THIS DRAWING IS UNPUBLISHED. RELEASED FOR PUBLICATION
 © COPYRIGHT BY TYCO ELECTRONICS CORPORATION. ALL RIGHTS RESERVED.

LOC	DIST	REVISIONS					
GP	00	P	LTR	DESCRIPTION	DATE	DWN	APVD
		B		REV PER ECO-06-006262	16MAR06	RG	MP



- 5 CABLE ENTRY OF BOOT IS MOULDED SOLID AND CROPPED TO SUIT CABLE USED BY CUSTOMER.
- 4. MATERIAL: ALL COLORS TO BE FIRE RETARDANT GRADE PVC 55 SHORE A, RATED TO UL94V-0. COLORS: SEE TABLE
- 3. FINISH: GLOSSY, CLEAN WITH NO INTERNAL & EXTERNAL BURRS.
- 2. ITEMS PROVIDED TO THIS SPECIFICATION SHALL BE IDENTIFIED ON THE CONTAINER WITH THE FOLLOWING INFORMATION: PART NUMBER & DATE CODE OF MANUFACTURE.
- 1. PART NUMBER CHANGES AND OR DESIGN CHANGES AFFECTING ITEM INTERCHANGEABILITY REQUIRE PRIOR TYCO APPROVAL AND AUTHORIZATION BY REVISION TO THIS DRAWING.

1766600-4	BLUE
1766600-3	GREY
1766600-2	RED
1766600-1	BLACK
TYCO PN:	COLOR

ELCON RAPID LOCK

THIS DRAWING IS A CONTROLLED DOCUMENT.		DWN	16FEB05	Tyco Electronics Corporation	
		CHK	M.C.CANT/GRZYBOWSKI	Harrisburg, PA 17105-3608	
DIMENSIONS: mm		APVD	25FEB05	NAME	
TOLERANCES UNLESS OTHERWISE SPECIFIED:		PRODUCT SPEC		INSULATION BOOT	
0 PLC ± -		APPLICATION SPEC		SIZE #2	
1 PLC ± .5				SIZE	CAGE CODE
2 PLC ± .25				A3	00779
3 PLC ± -				DRAWING NO	C=1766600
4 PLC ± -				RESTRICTED TO	
ANGLES ± .5		WEIGHT	-	SCALE	1:1
MATERIAL	FINISH			SHEET	1 OF 1
-	-			REV	B
CUSTOMER DRAWING					