

► General data



Power supply unit, common-mode, input 120 V AC, output 2 x 12 V DC/1 A

| | |
|--------------|--------------------------|
| Order number | 2943796 |
| Type | CM 90-PS-120AC/ 2X12DC/1 |

| | |
|----------------|---------------|
| Barcode number | 4017918081348 |
| Unit pack | 1 Pcs. |
| Customs tariff | 85044094000 |

► Technical data

Input data

| | |
|---------------------------|----------------------|
| Nominal input voltage | 120 V AC +6 % -10 % |
| Frequency range | 50 Hz ... 60 Hz |
| Nominal power consumption | 65 VA |
| Input fuse | Thermal release fuse |

Output data

| | |
|------------------------------|-----------------------------|
| Nominal output voltage | ± 12 V DC ±4 % |
| Output current | 1 A (2 x) |
| Residual ripple | < 30 mV _{ss} |
| Output fuse | IEC 127-2/EN 60 127-2 (2 x) |
| Protective circuit/component | Damping diode, varistor |

General data

| | |
|---------------------------------|---|
| Width | 90 mm |
| Height | 146 mm |
| Depth | 75 mm |
| Weight | 1.5 kg |
| Operating mode | 100% operating factor |
| Test voltage input/output | 4 kV AC |
| Degree of protection | IP 20 |
| Ambient temperature (operation) | 0 °C ... 60 °C |
| Installation position | On horizontal DIN rail, venting slits above and below |
| Assembly instructions | Can be aligned with spacing = 10 mm |
| Standards/regulations | IEC 664/IEC 664 A/DIN VDE 0110-1:1989-01 |
| Standards/regulations | DIN VDE 0551 |

Connection data, input

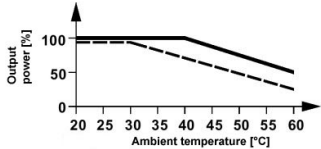
| | |
|--|---------------------|
| Screw thread | M 2,5 |
| Stripping length | 8 mm |
| Type of connection | Screw connection |
| Min. conductor cross section AWG/kcmil | 24 |
| Conductor cross section AWG/kcmil max | 14 |
| Min. conductor cross section, rigid | 0.2 mm ² |
| Conductor cross section, rigid max. | 2.5 mm ² |
| Conductor cross section flexible min. | 0.2 mm ² |
| Max. conductor cross section, flexible | 2.5 mm ² |

Connection data, output

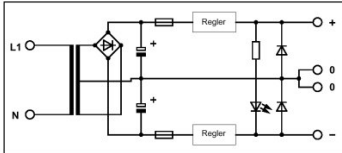
| | |
|--|---------------------|
| Stripping length | 8 mm |
| Type of connection | Screw connection |
| Min. conductor cross section AWG/kcmil | 24 |
| Conductor cross section AWG/kcmil max | 14 |
| Min. conductor cross section, rigid | 0.2 mm ² |
| Conductor cross section, rigid max. | 2.5 mm ² |
| Conductor cross section flexible min. | 0.2 mm ² |
| Max. conductor cross section, flexible | 2.5 mm ² |

▸ Drawings

Diagram



Circuit diagram



► Address

Phoenix Contact GmbH & Co. KG
Flachsmarktstr. 8
32825 Blomberg
Germany
Tel + 49 - (0) 52 35 - 3-00
Fax + 49 - (0) 52 35 - 3-4 12 00
www.phoenixcontact.com

© Phoenix Contact
Technical modifications reserved