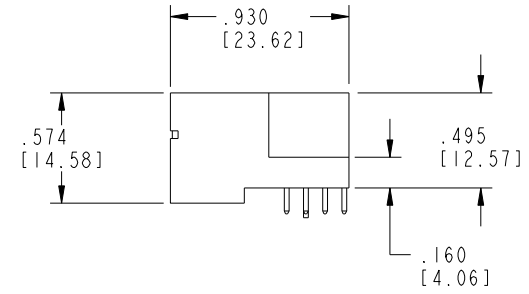
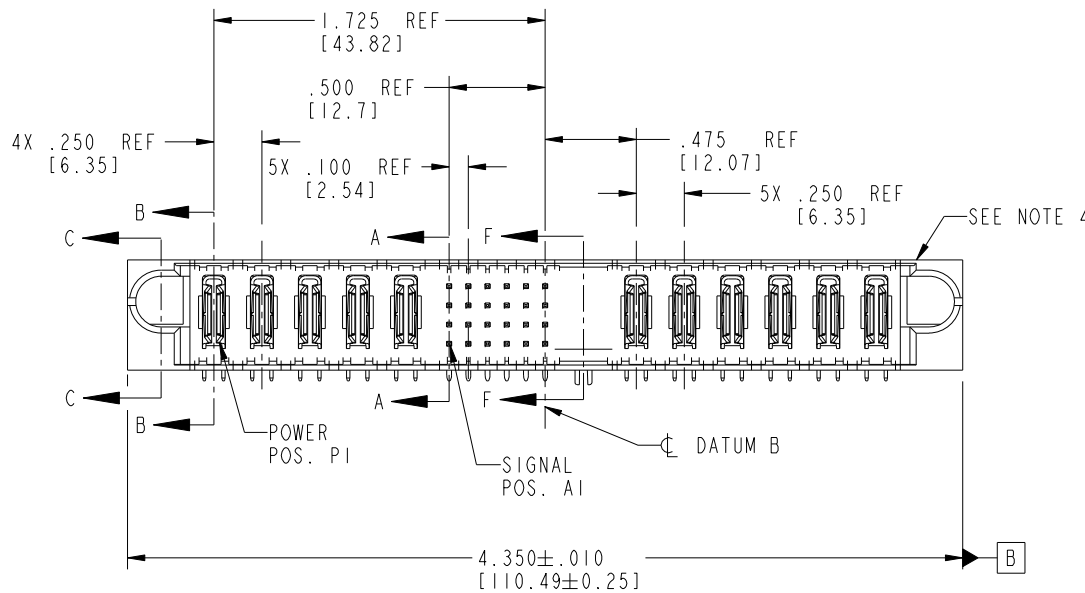
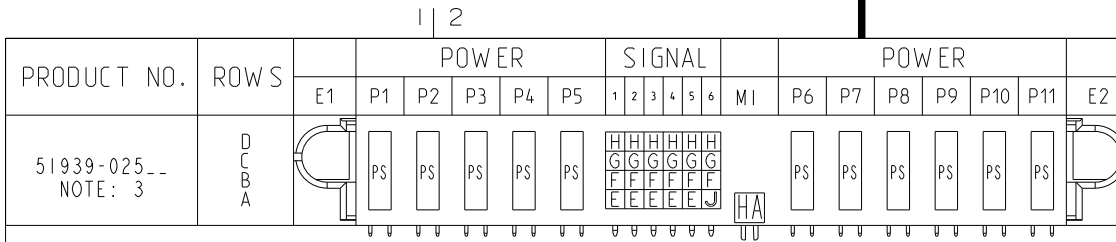


Tous droits strictement réservés. Reproduction ou communication a des tiers interdite sous quelque forme que ce soit sans autorisation écrite du propriétaire. Propriété de c FCI. Droits de reproduction FCI.

All rights strictly reserved. Reproduction or issue to third parties in any form whatever is not permitted without written authority from the proprietor. Property of FCI. Copyright FCI.



CODE	DIM "M" MATING LENGTH	CONTACT TYPE
E	.220 [5.59]	SIGNAL
F	.220 [5.59]	SIGNAL
G	.220 [5.59]	SIGNAL
H	.220 [5.59]	SIGNAL
J	.170 [4.32]	SIGNAL
PS	N/A [N/A]	POWER
HA	N/A [N/A]	HOLD-DOWN

mat'l code				SEE NOTE 2		tolerances unless otherwise specified		CUSTOMER	
ltr	ecn no.	dr	date	linear	.XX±.01/0.X±0.13	projection		www.fciconnect.com	
A	V21369	CGD	08/21/02		.XXX±.005/0.XX±0.13	INCH/MM		title 5P + 24S + 1M + 6P RIGHT ANGLE SOLDER HEADER	
B	DG05-0240	GuoJM	07/26/05	angles	.XXXX±.0020/0.XXX±0.051	scale		product family PwrBlade code 213	
C	DG06-0008	JMG	01/07/06		0°±2°	1:1		size dwg no 51939-025 sheet 1 of 4	
D	DG08-0272	WD	09/28/08	dr	C. DAILY 08/21/02			cage code 22526	
				enrg	M. MOSTOLLER 08/21/02				
				chr	M. MOSTOLLER 08/21/02				
				appd	M. MOSTOLLER 08/21/02				
sheet index	revision sheet	D 1	D 2	D 3	D 4				

A

B

1 | 2

3 |

4

Pro/E

PDM: Rev: D

STATUS: Released

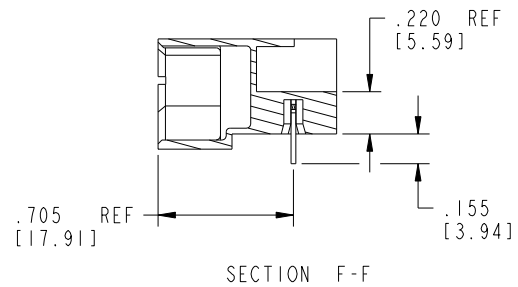
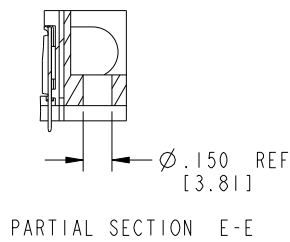
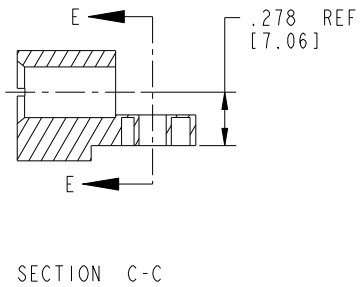
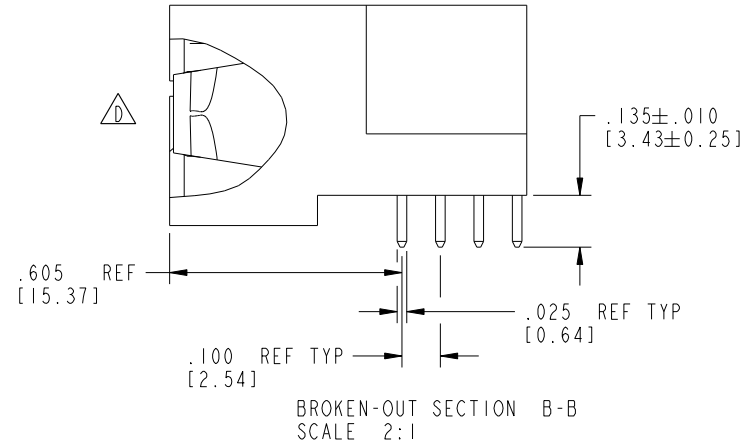
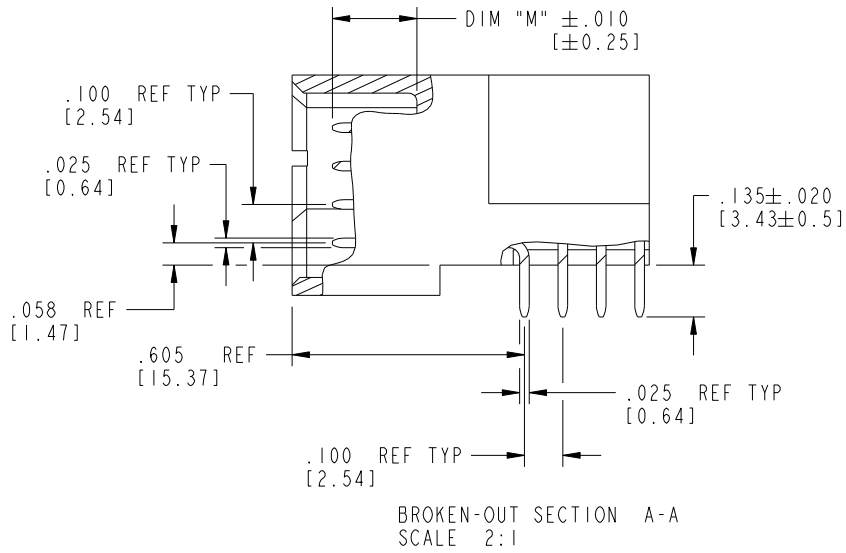
Printed: Dec 20, 2010

Tous droits strictement réservés. Reproduction ou communication a des tiers interdite sous quelque forme que ce soit sans autorisation écrite du propriétaire. Propriété de c FCI. Droits de reproduction FCI.

All rights strictly reserved. Reproduction or issue to third parties in any form whatever is not permitted without written authority from the proprietor. Property of FCI. Copyright FCI.



PRODUCT NUMBER
51939-025__
NOTE: 3



mat'l code		SEE NOTE 2		tolerances unless otherwise specified		CUSTOMER		FCI	
lir	ecn no.	dr	date	linear	.XX±.01/0.X±0.3	COPY		www.fciconnect.com	
D				projection	.XX±.005/0.XX±0.13	INCH/MM		title 5P + 24S + 1M + 6P RIGHT ANGLE SOLDER HEADER	
				angles	.XXX±.0020/0.XXX±0.051	scale		product family PwrBlade code 213	
				dr	0° ± 2°	1:1		size dwg no 51939-025 sheet 2 of 4	
				engr	C. DAILY 08/21/02				
				chr	M. MOSTOLLER 08/21/02				
				appd	M. MOSTOLLER 08/21/02				
sheet index	revision sheet								

Pro/E

PDM: Rev:D

STAT: Released

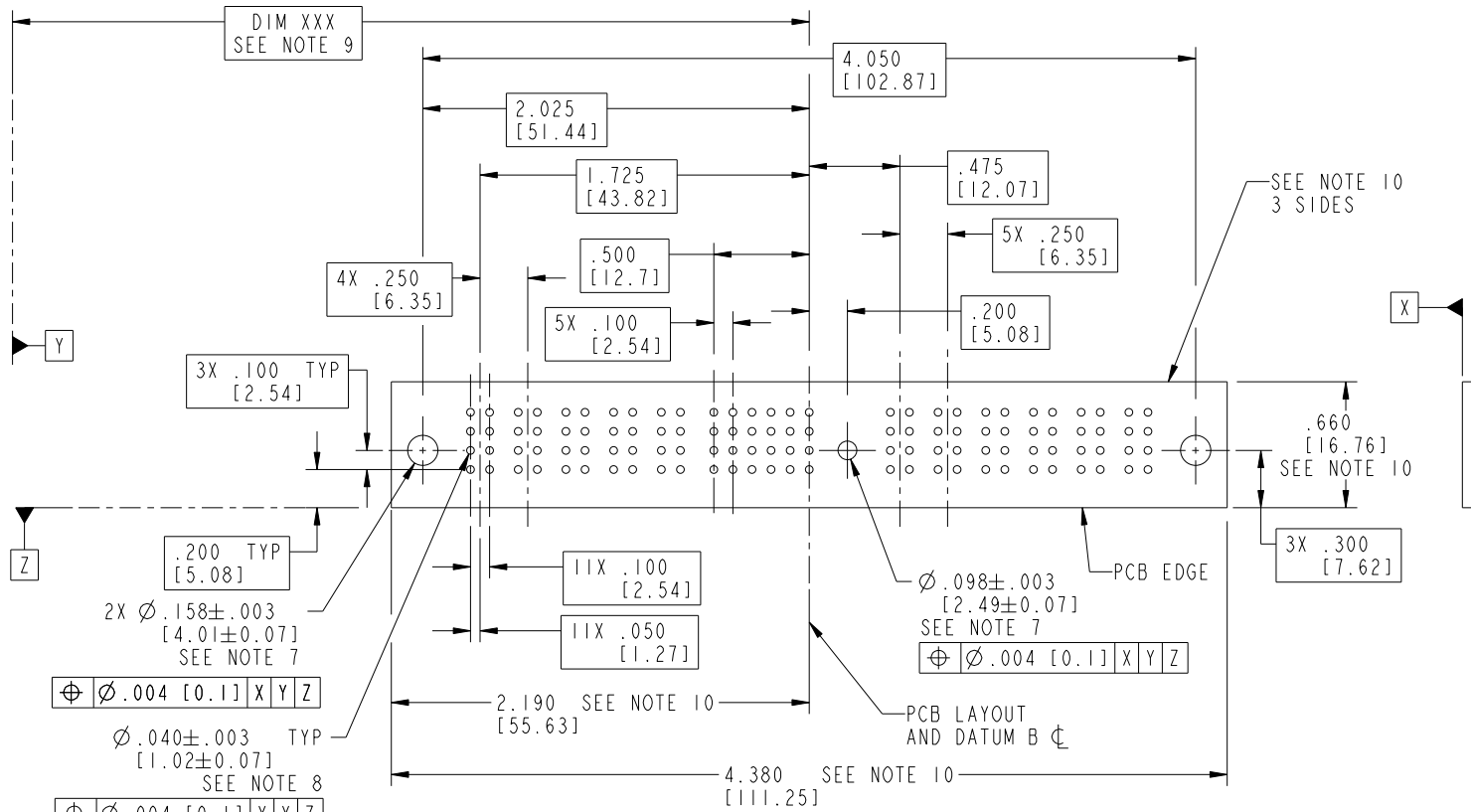
Printed: Dec 20, 2010

Tous droits strictement réservés. Reproduction ou communication a des tiers interdite sous quelque forme que ce soit sans autorisation écrite du propriétaire. Propriété de c FCI. Droits de reproduction FCI.

All rights strictly reserved. Reproduction or issue to third parties in any form whatever is not permitted without written authority from the proprietor. Property of FCI. Copyright FCI.



PRODUCT NUMBER
51939-025__
NOTE: 3



RECOMMENDED PCB LAYOUT

mat'l code		SEE NOTE 2		tolerances unless otherwise specified		CUSTOMER		 www.fciconnect.com	
ltr	ecn no.	dr	date	linear	.XX±.01/0.X±0.3	projection	title 5P + 24S + 1M + 6P RIGHT ANGLE SOLDER HEADER		
D				angles	.XXY±.005/0.XX±0.13 XXXX±.0020/0.XXX±0.051 0°±2°	 INCH/MM	product family PwrBlade		code 213
				dr	C. DAILY 08/21/02	scale	size dwg no		sheet 3 of 4
				engr	M. MOSTOLLER 08/21/02	1:1	A 51939-025		
				chr	M. MOSTOLLER 08/21/02				
				appd	M. MOSTOLLER 08/21/02				
sheet index	revision sheet								

cage code 22526

Pro/E

PDM: Rev: D

STATUS: Released

Printed: Dec 20, 2010

PRODUCT NUMBER
 51939-025__
 NOTE: 3

NOTES:

1. DIMENSIONS AND TOLERANCES ARE IN ACCORDANCE WITH ASME Y14.5M, 1994 UNLESS OTHERWISE SPECIFIED.

CONNECTOR NOTES:

- 2. HOUSING MATERIAL: UL 94 V-0 GLASS FILLED HIGH-TEMP THERMOPLASTIC
 POWER CONTACT MATERIAL: COPPER ALLOY
 SIGNAL PIN MATERIAL: COPPER ALLOY

3. SEE ITEM 1 & 2 IN PRINT 10064183 FOR PLATING SPEC OF 51939-025 AND 51939-025LF RESPECTIVELY.

4. MANUFACTURER'S NAME, P/N, AND DATE CODE TO APPEAR ON THIS SURFACE.

5. PRODUCT SPECIFICATION GS-12-149.
APPLICATION SPECIFICATION BUS-20-067.

PCB NOTES:

- 6. ALL HOLE DIAMETERS ARE FINISHED HOLE SIZE.
- 7. MOUNTING HOLES, WHERE APPLICABLE, ARE UNPLATED.

8. $\varnothing .0453 \pm .0010$ [1.151 \pm 0.025] DRILLED HOLES PLATED WITH .0003 [0.008] MIN SnPb OVER .001 [0.03] TO .003 [0.08] Cu PLATING TO ACHIEVE $\varnothing .040 \pm .003$ [1.02 \pm .07] HOLE.

9. "DIM XXX" TO BE DETERMINED BY THE CUSTOMER.

10. CONNECTOR KEEP-OUT ZONE.

11. A Δ SYMBOL WILL BE NEXT TO ANY DIMENSION, VIEW, OR NOTE WHICH HAS BEEN MODIFIED WITH THE CURRENT DRAWING REVISION.

mat'l code				SEE NOTE 2		tolerances unless otherwise specified		CUSTOMER		FCI	
ltr	ecn no.	dr	date	linear	.XX \pm .01 / 0.X \pm 0.3	projection		COPY		www.fciconnect.com	
D					.XXX \pm .005 / 0.XX \pm 0.13	INCH/MM		title		5P + 24S + 1M + 6P	
				angles	.XXX \pm .0020 / 0.XXX \pm 0.051	scale		product family		PwrBlade	
				dr	0° + 2°	1:1		size		213	
				enrg	C. DAILY 08/21/02			dwg no		sheet	
				chr	M. MOSTOLLER 08/21/02			A		4 of 4	
				appd	M. MOSTOLLER 08/21/02			51939-025			
sheet index	revision sheet										

Tous droits strictement réservés. Reproduction ou communication a des tiers interdite sous quelque forme que ce soit sans autorisation écrite du propriétaire. Propriete de c FCI. Droits de reproduction FCI.



All rights strictly reserved. Reproduction or issue to third parties in any form whatever is not permitted without written authority from the proprietor. Property of FCI. Copyright FCI.