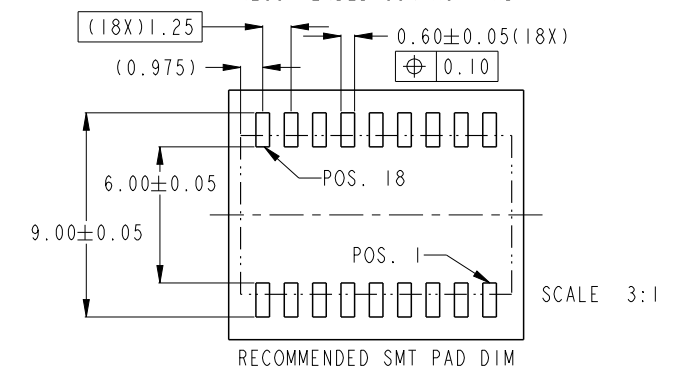
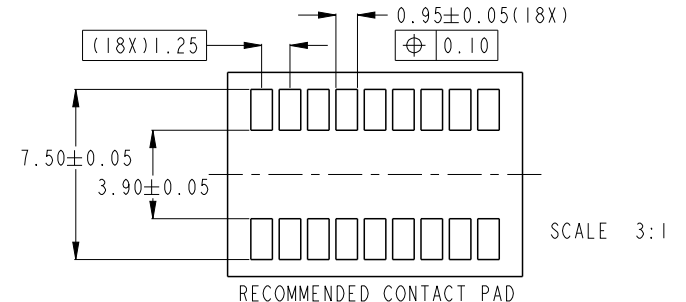
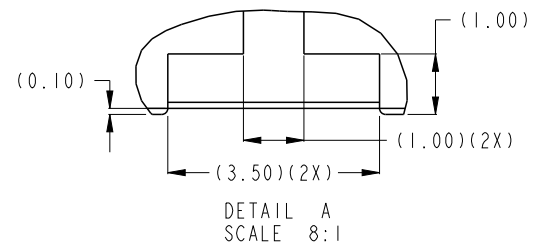
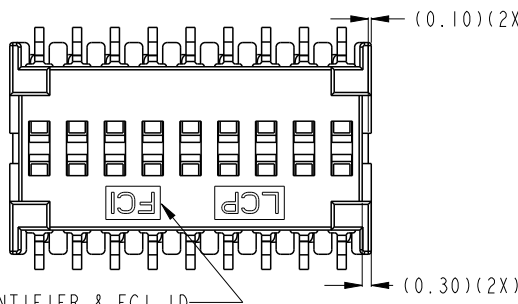
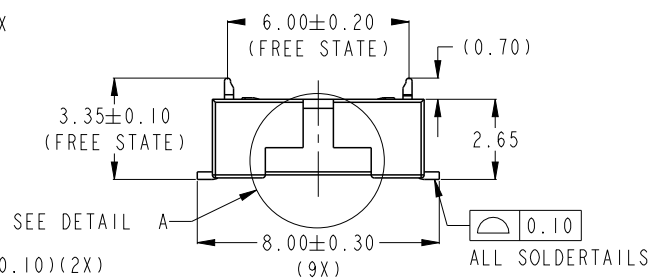
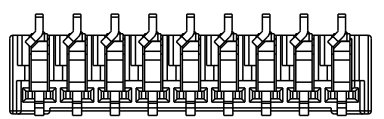
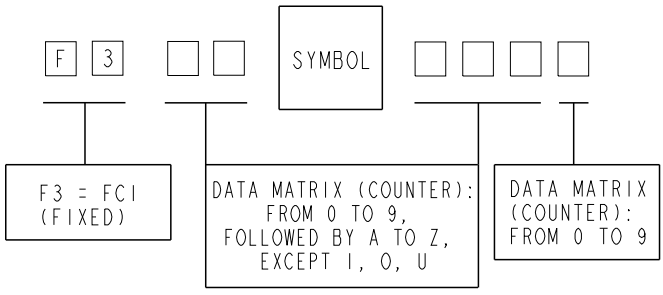
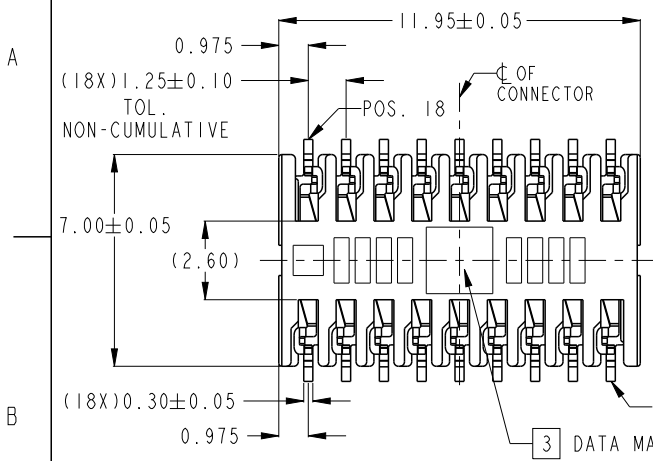
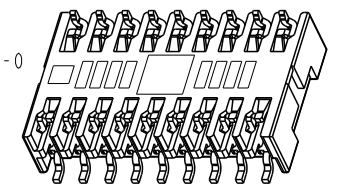


PRODUCT No.
10103958-001LF

VERICODE IDENTIFICATION:
(SERIAL NUMBER ID)

- NOTES:
- MATERIAL:
HOUSING: LCP, BLACK, UL94 V-0
CONTACT: COPPER ALLOY
 - FINISH:
0.76um MIN, MATTE TIN OVER
0.76um, NICKEL PLATING
 - DATA MATRIX CODING
OF 8 DIGITS (8 DIGITS, HUMAN READABLE) SCALE 3:1
USING ALPHANUMERIC, EXCEPT I, O, U FOR 3rd-7th DIGIT,
USING NUMBER ONLY FOR 8th DIGIT (REFER DIAGRAM)
 - PACKAGING TAPE AND REEL
 - THE HOUSING WILL WITHSTAND
EXPOSURE TO 260° PEAK TEMPERATURE FOR 10 SECONDS
IN A CONVECTION, INFRA-RED OR VAPOR PHASE REFLOW OVEN.
 - THIS PRODUCT MEETS EUROPEAN UNION DIRECTIVES AND
OTHER COUNTRY REGULATIONS AS DESCRIBED ON GS-22-008.
 - APPROXIMATED LOCATION FOR
MATERIAL IDENTIFIER & FCI ID.



7 MATERIAL IDENTIFIER & FCI ID



Copyright FCI.

spec ref	-	dr	Koon-Poh Tay	2011/08/18	projection	MM	size	A4	scale	4:1		
tolerance std	ASME Y14.5	eng	Dennis Goh	2014/10/08		←→	ecn no	ELX-S-18890-1				
TOLERANCES UNLESS OTHERWISE SPECIFIED		chr	-	-				rel level	Released			
surface	✓	appr	Chen-Hong Tan	2015/06/30	product family	-	rev	10103958				
ASME Y14.5	linear	0.X	±0.20		title		COMPRESSION CONNECTOR		cat. no.	Product - Customer Drw	sheet 1 of 1	
		0.XX	±0.20		1.25mm PITCH		dwg no	10103958				
	angular	0°	±2°		www.fci.com			C				

Prod File - REV C - 2009-06-09