

E

D


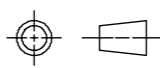
C

B

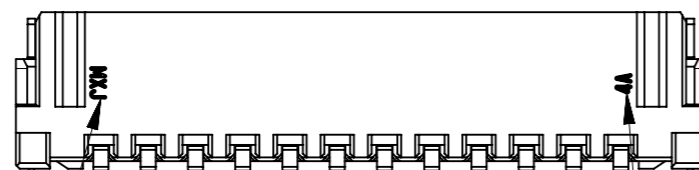
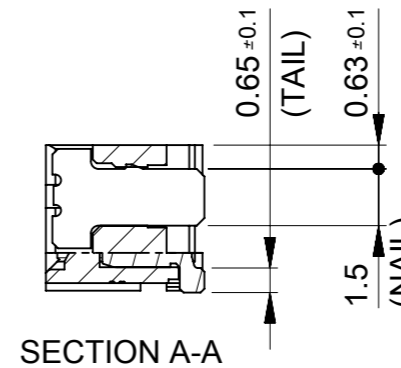
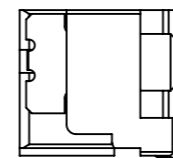
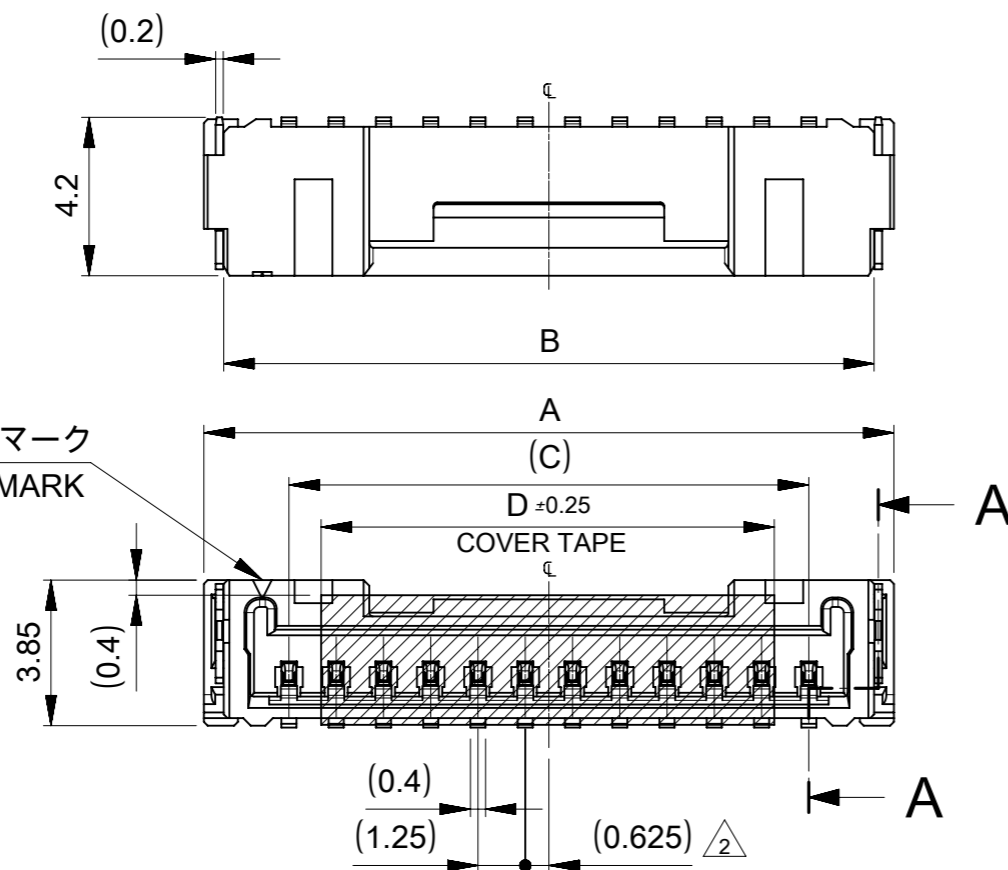
A

| ORANGE | GREEN | BLUE | YELLOW | RED | BLACK | NATURAL (BEIGE) | HSG COLOR |
|--------------------|--------------------|--------------------|--------------------|--------------------|--------------------|--------------------|---------------|
| 5055681678 | 5055681676 | 5055681674 | 5055681673 | 5055681672 | 5055681671 | 5055681670 | 16 |
| 5055681578 | 5055681576 | 5055681574 | 5055681573 | 5055681572 | 5055681571 | 5055681570 | 15 |
| 5055681478 | 5055681476 | 5055681474 | 5055681473 | 5055681472 | 5055681471 | 5055681470 | 14 |
| 5055681378 | 5055681376 | 5055681374 | 5055681373 | 5055681372 | 5055681371 | 5055681370 | 13 |
| 5055681278 | 5055681276 | 5055681274 | 5055681273 | 5055681272 | 5055681271 | 5055681270 | 12 |
| 5055681178 | 5055681176 | 5055681174 | 5055681173 | 5055681172 | 5055681171 | 5055681170 | 11 |
| 5055681078 | 5055681076 | 5055681074 | 5055681073 | 5055681072 | 5055681071 | 5055681070 | 10 |
| 5055680978 | 5055680976 | 5055680974 | 5055680973 | 5055680972 | 5055680971 | 5055680970 | 9 |
| 5055680878 | 5055680876 | 5055680874 | 5055680873 | 5055680872 | 5055680871 | 5055680870 | 8 |
| 5055680778 | 5055680776 | 5055680774 | 5055680773 | 5055680772 | 5055680771 | 5055680770 | 7 |
| 5055680678 | 5055680676 | 5055680674 | 5055680673 | 5055680672 | 5055680671 | 5055680670 | 6 |
| 5055680578 | 5055680576 | 5055680574 | 5055680573 | 5055680572 | 5055680571 | 5055680570 | 5 |
| 5055680478 | 5055680476 | 5055680474 | 5055680473 | 5055680472 | 5055680471 | 5055680470 | 4 |
| 5055680378 | 5055680376 | 5055680374 | 5055680373 | 5055680372 | 5055680371 | 5055680370 | 3 |
| 5055680278 | 5055680276 | 5055680274 | 5055680273 | 5055680272 | 5055680271 | 5055680270 | 2 |
| EMBOSSSED TAPE PKG | EMBOSSSED TAPE PKG | EMBOSSSED TAPE PKG | EMBOSSSED TAPE PKG | EMBOSSSED TAPE PKG | EMBOSSSED TAPE PKG | EMBOSSSED TAPE PKG | 極数 CKT NO. |
| ORDER NO. | ORDER NO. | ORDER NO. | ORDER NO. | ORDER NO. | ORDER NO. | ORDER NO. | |

THIS DRAWING CONTAINS INFORMATION THAT IS PROPRIETARY TO MOLEX ELECTRONIC TECHNOLOGIES, LLC AND SHOULD NOT BE USED WITHOUT WRITTEN PERMISSION

| | | | | | | | | | | |
|---|--|---------------------------------------|-------|-----------------|---|---|--|-----------------|--------------|--|
| REDRAWN EC NO: 121145 DRWN: RWATANABE01 CHK'D: KOMURAKAMI APPR: TKANEKO | 2017/08/28 | GENERAL TOLERANCES (UNLESS SPECIFIED) | | DIMENSION UNITS | SCALE |  | | | | |
| | 2017/09/26 | ANGULAR TOL ± 1.0 ° | | mm | NTS | | | | | |
| | A REV | 4 PLACES | ± 0.2 | DRWN BY | DATE | | MICRO-LOCK PLUS 1.25 W/B SINGLE ROW ST SMT EMBOSSSED TAPE PKG | | | |
| | | 3 PLACES | ± 0.2 | RWATANABE01 | 2017/08/28 | | | | | |
| | | 2 PLACES | ± 0.2 | CHK'D BY | DATE | | | | | |
| | | 1 PLACE | ± 0.2 | KOMURAKAMI | 2017/09/26 | | | | | |
| | | 0 PLACES | ± 0.2 | APPR BY | DATE | | | | | |
| | DRAFT WHERE APPLICABLE MUST REMAIN WITHIN DIMENSIONS | | | TKANEKO | 2017/09/26 | | PRODUCT CUSTOMER DRAWING | | | |
| | | | | DRAWING SIZE | THIRD ANGLE PROJECTION | | SERIES | MATERIAL NUMBER | CUSTOMER | |
| | | | | A3 |  | | 505568 | SEE SHEET2 | GENERAL | |
| | | | | | | DOCUMENT NUMBER | DOC TYPE | DOC PART | SHEET NUMBER | |
| | | | | | | 5055680000-SD | PSD | 000 | 2 OF 2 | |

回路番号1 マーク
CKT No.1 MARK



奇数キャビティ : キャビティ番号及び金型番号
偶数キャビティ : トレードマーク
ODD CAVITY:CAVITY AND MOLD NO.
EVEN CAVITY:TRADE MARK

奇数キャビティ : トレードマーク
偶数キャビティ : キャビティ番号及び金型番号
ODD CAVITY:TRADE MARK
EVEN CAVITY:CAVITY AND MOLD NO.

NOTES:

1. 嵌合相手 : 505565**0*
MATE WITH: 505565**0*
2. 偶数極 に適用
APPLY FOR EVEN CKT.
3. 製品仕様書 : 5055650000 PS 000
PRODUCT SPECIFICATION:5055650000 PS 000
4. オーダー番号と色、極数の関係
RELATION ORDER NUMBER AND COLOR, CKT.

505568**7*

| 極数 | 色 | NO. | COLOR |
|----|---|-----|---------|
| 0 | | 0 | NATURAL |
| 1 | | 1 | BLACK |
| 2 | | 2 | RED |
| 3 | | 3 | YELLOW |
| 4 | | 4 | BLUE |
| 6 | | 6 | GREEN |
| 8 | | 8 | ORANGE |

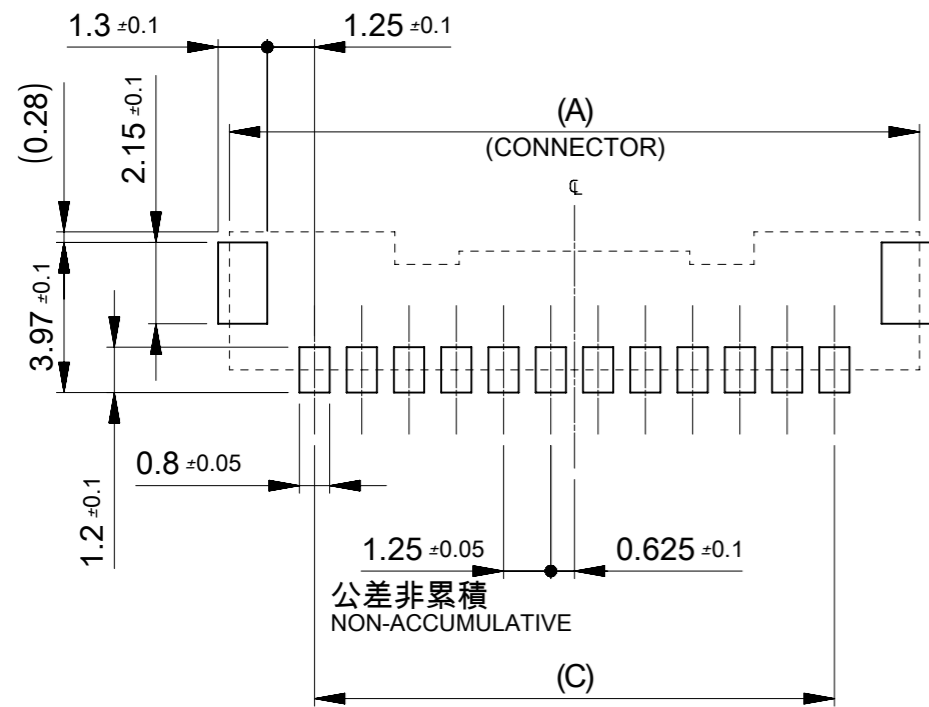
5. ターミナルとネイルの平坦度は0.1mm以下
TERMINAL AND NAIL COPLANARITY : 0.1mm MAX.

| | | | | | |
|----|-------|-------|-------|-------------------|---------------|
| 12 | 18.75 | 22.20 | 23.25 | 505568167* | 16 |
| 12 | 17.50 | 20.95 | 22.00 | 505568157* | 15 |
| 12 | 16.25 | 19.70 | 20.75 | 505568147* | 14 |
| 12 | 15.00 | 18.45 | 19.50 | 505568137* | 13 |
| 12 | 13.75 | 17.20 | 18.25 | 505568127* | 12 |
| 12 | 12.50 | 15.95 | 17.00 | 505568117* | 11 |
| 12 | 11.25 | 14.70 | 15.75 | 505568107* | 10 |
| 10 | 10.00 | 13.45 | 14.50 | 505568097* | 9 |
| 8 | 8.75 | 12.20 | 13.25 | 505568087* | 8 |
| 8 | 7.50 | 10.95 | 12.00 | 505568077* | 7 |
| 8 | 6.25 | 9.70 | 10.75 | 505568067* | 6 |
| 8 | 5.00 | 8.45 | 9.50 | 505568057* | 5 |
| 7 | 3.75 | 7.20 | 8.25 | 505568047* | 4 |
| 5 | 2.50 | 5.95 | 7.00 | 505568037* | 3 |
| 5 | 1.25 | 4.70 | 5.75 | 505568027* | 2 |
| D | C | B | A | EMBOSSED TAPE PKG | 極数 CKT NO. |
| | | | | ORDER NO. | |

| 部品 PART | 材質 MATERIAL |
|-------------------|--|
| ハウジング HOUSING | ポリアミド(PA),ガラス充填,UL94 V-0,色 : SHEET 2参照 POLYAMIDE (PA),GLASS FILLED,UL94 V-0,COLOR:SEE SHEET 2 |
| ターミナル TERMINAL | 黄銅 BRASS |
| | 錫ビスマスめっき : 1.0 MICRO-METER MIN. TIN-BISMUTH PLATED (MATTE TIN) |
| ネイル NAIL | ニッケルめっき(下地) : 1.0 MICRO-METER MIN. NICKEL (UNDER-PLATED) |
| | 黄銅 BRASS |
| | 錫めっき : 1.0 MICRO-METER MIN. TIN PLATED(MATTE TIN) |
| | ニッケルめっき(下地) : 1.0 MICRO-METER MIN. NICKEL (UNDER-PLATED) |

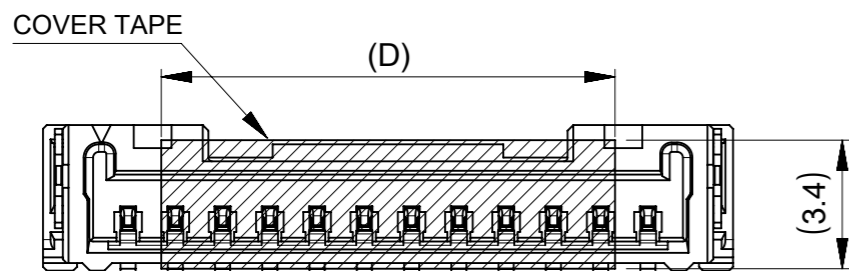
THIS DRAWING CONTAINS INFORMATION THAT IS PROPRIETARY TO MOLEX ELECTRONIC TECHNOLOGIES, LLC AND SHOULD NOT BE USED WITHOUT WRITTEN PERMISSION

| | | | | | | | | | |
|---|----------------|--|---------------------------------------|--------------------------|------------------------|-----------------|---|----------|--------------|
| REDRAWN EC NO: 121145 DRWN: RWATANABE01 CHK'D: KOMURAKAMI APPR: TKANEKO | 2017/08/25 | 2017/09/26 | GENERAL TOLERANCES (UNLESS SPECIFIED) | DIMENSION UNITS | SCALE | | | | |
| | 2017/08/25 | 2017/09/26 | | mm | 5:1 | | | | |
| | 4 PLACES ± 0.2 | 3 PLACES ± 0.2 | | DRWN BY | DATE | | MICRO-LOCK PLUS 1.25 W/B SINGLE ROW ST SMT PLUG ASSY | | |
| | 2 PLACES ± 0.2 | 1 PLACE ± 0.2 | | RWATANABE01 | 2017/08/25 | | | | |
| 0 PLACES ± 0.2 | | CHK'D BY | DATE | PRODUCT CUSTOMER DRAWING | | | | | |
| | | KOMURAKAMI | 2017/09/26 | | | | | | |
| | | APPR BY | DATE | DRAWING SIZE | THIRD ANGLE PROJECTION | SERIES | MATERIAL NUMBER | CUSTOMER | |
| | | TKANEKO | 2017/09/26 | A3 | | 505568 | SEE SHEET2 | GENERAL | |
| | | DRAFT WHERE APPLICABLE MUST REMAIN WITHIN DIMENSIONS | | | | DOCUMENT NUMBER | DOC TYPE | DOC PART | SHEET NUMBER |
| | | | | | | 5055680001-SD | PSD | 000 | 1 OF 2 |

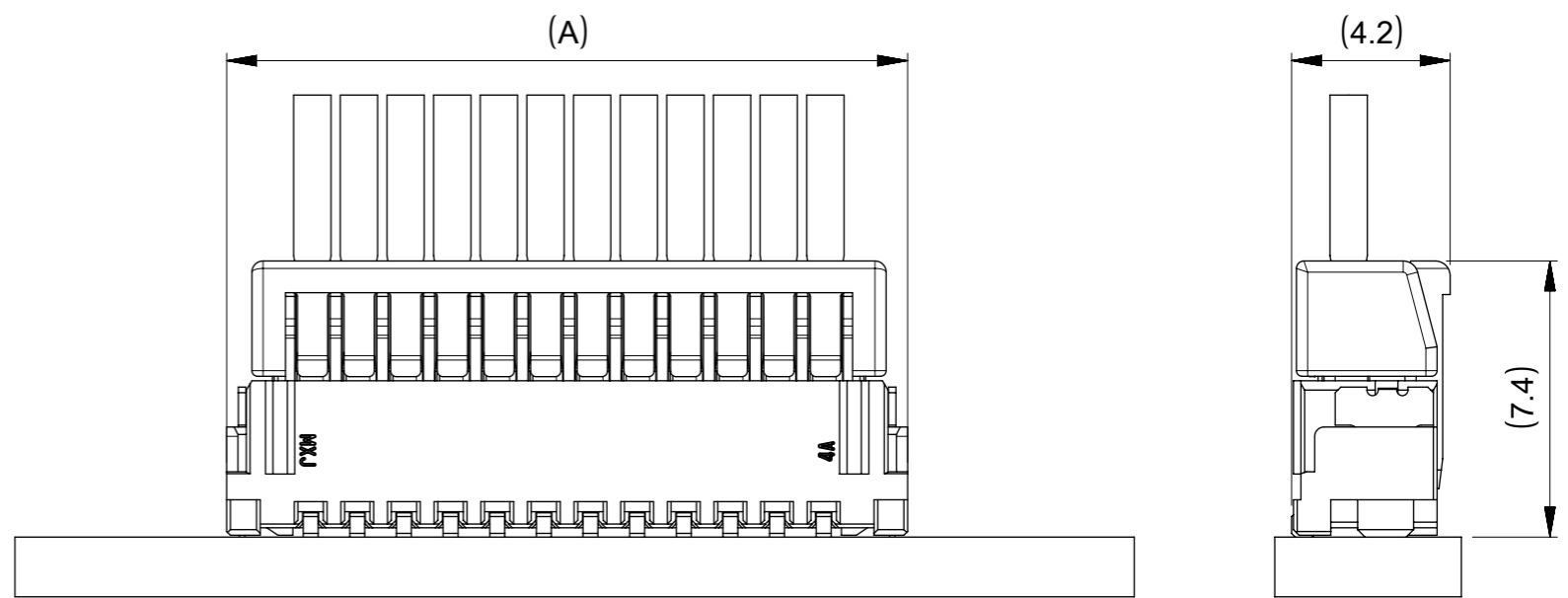


推奨基板レイアウト
RECOMMENDED PCB PATTERN LAYOUT

(参考:メタルマスク厚さ 150μm, マスク開口率 100%)
(REFERENCE: METAL MASK THICKNESS 150μm, APERTURE RASIO 100%)



吸着範囲
VACCUME AREA



嵌合状態図
MATED CONNECTORS

| ORANGE | GREEN | BLUE | YELLOW | RED | BLACK | NATURAL (BEIGE) | HOUSING COLOR |
|--------------------|--------------------|--------------------|--------------------|--------------------|--------------------|--------------------|---------------|
| 5055681678 | 5055681676 | 5055681674 | 5055681673 | 5055681672 | 5055681671 | 5055681670 | 16 |
| 5055681578 | 5055681576 | 5055681574 | 5055681573 | 5055681572 | 5055681571 | 5055681570 | 15 |
| 5055681478 | 5055681476 | 5055681474 | 5055681473 | 5055681472 | 5055681471 | 5055681470 | 14 |
| 5055681378 | 5055681376 | 5055681374 | 5055681373 | 5055681372 | 5055681371 | 5055681370 | 13 |
| 5055681278 | 5055681276 | 5055681274 | 5055681273 | 5055681272 | 5055681271 | 5055681270 | 12 |
| 5055681178 | 5055681176 | 5055681174 | 5055681173 | 5055681172 | 5055681171 | 5055681170 | 11 |
| 5055681078 | 5055681076 | 5055681074 | 5055681073 | 5055681072 | 5055681071 | 5055681070 | 10 |
| 5055680978 | 5055680976 | 5055680974 | 5055680973 | 5055680972 | 5055680971 | 5055680970 | 9 |
| 5055680878 | 5055680876 | 5055680874 | 5055680873 | 5055680872 | 5055680871 | 5055680870 | 8 |
| 5055680778 | 5055680776 | 5055680774 | 5055680773 | 5055680772 | 5055680771 | 5055680770 | 7 |
| 5055680678 | 5055680676 | 5055680674 | 5055680673 | 5055680672 | 5055680671 | 5055680670 | 6 |
| 5055680578 | 5055680576 | 5055680574 | 5055680573 | 5055680572 | 5055680571 | 5055680570 | 5 |
| 5055680478 | 5055680476 | 5055680474 | 5055680473 | 5055680472 | 5055680471 | 5055680470 | 4 |
| 5055680378 | 5055680376 | 5055680374 | 5055680373 | 5055680372 | 5055680371 | 5055680370 | 3 |
| 5055680278 | 5055680276 | 5055680274 | 5055680273 | 5055680272 | 5055680271 | 5055680270 | 2 |
| EMBOSSSED TAPE PKG | EMBOSSSED TAPE PKG | EMBOSSSED TAPE PKG | EMBOSSSED TAPE PKG | EMBOSSSED TAPE PKG | EMBOSSSED TAPE PKG | EMBOSSSED TAPE PKG | 極数 CKT NO. |
| ORDER NO. | ORDER NO. | ORDER NO. | ORDER NO. | ORDER NO. | ORDER NO. | ORDER NO. | |

THIS DRAWING CONTAINS INFORMATION THAT IS PROPRIETARY TO MOLEX ELECTRONIC TECHNOLOGIES, LLC AND SHOULD NOT BE USED WITHOUT WRITTEN PERMISSION

| | | | | |
|---|---|---|---|---|
| REDRAWN EC NO: 121145 DRWN: RWATANABE01 CHK'D: KOMURAKAMI APPR: TKANEKO | 2017/08/25 2017/09/26 2017/09/26 | GENERAL TOLERANCES (UNLESS SPECIFIED) ANGULAR TOL ± 1.0 ° 4 PLACES ± 0.2 3 PLACES ± 0.2 2 PLACES ± 0.2 1 PLACE ± 0.2 0 PLACES ± 0.2 | DIMENSION UNITS: mm SCALE: 5:1 DRWN BY: RWATANABE01 DATE: 2017/08/25 CHK'D BY: KOMURAKAMI DATE: 2017/09/26 APPR BY: TKANEKO DATE: 2017/09/26 | <p>MICRO-LOCK PLUS 1.25 W/B SINGLE ROW ST SMT PLUG ASSY</p> <p>PRODUCT CUSTOMER DRAWING</p> <p>SERIES: 505568 MATERIAL NUMBER: SEE CHART CUSTOMER: GENERAL</p> <p>DOCUMENT NUMBER: 5055680001-SD DOC TYPE: PSD DOC PART: 000 SHEET NUMBER: 2 OF 2</p> |
| | DRAFT WHERE APPLICABLE MUST REMAIN WITHIN DIMENSIONS | DRAWING SIZE: A3 THIRD ANGLE PROJECTION | | |
| | A | | | |
| | REV | | | |