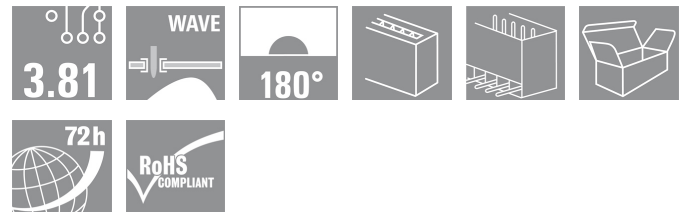


**BC/SC 3.81 series**  
**SC 3.81/02/180G 3.2SN OR BX**

**Weidmüller Interface GmbH & Co. KG**  
 Klingenbergstraße 16  
 D-32758 Detmold  
 Germany  
 Fon: +49 5231 14-0  
 Fax: +49 5231 14-292083  
 www.weidmueller.com



The SC pin header has a perpendicular (standing) plugging direction in relation to the PCB. It is available in closed (G) and screw flange (F) versions.

Weidmüller's 3.81-mm-pitch (0.15 inch) plug-in connectors are compatible with the layouts of standard connectors and offer space for labelling and coding.

- 320 V (IEC) / 300 V (UL)
- 17.5 A (IEC) / 10 A (UL)

**General ordering data**

Order No.	<a href="#">1942840000</a>
Type	SC 3.81/02/180G 3.2SN OR BX
Version	PCB plug-in connector, male header, closed side, Solder connection, 3.81 mm, No. of poles: 2, 180°, Solder pin length (l): 3.2 mm, tinned, Orange, Box
GTIN (EAN)	4032248654758
Qty.	50 pc(s).
Product data	IEC: 320 V / 17.5 A UL: 300 V / 10 A
Packaging	Box

Creation date February 20, 2013 9:11:21 PM CET

**BC/SC 3.81 series**  
**SC 3.81/02/180G 3.2SN OR BX**

**Weidmüller Interface GmbH & Co. KG**  
 Klingenbergstraße 16  
 D-32758 Detmold  
 Germany  
 Fon: +49 5231 14-0  
 Fax: +49 5231 14-292083  
 www.weidmueller.com

**Technical data**
**Dimensions and weights**

Net weight 0.7 g

**System parameters**

Product family	BC/SC 3.81 series	Mounting onto the PCB	Solder connection
Outgoing elbow	180°	Pitch in mm (P)	3.81 mm
Pitch in inches (P)	0.15 inch	No. of poles	2
Solder pin length (l)	3.2 mm	Pin dimensions	d = 1.0 mm, Octagonal
Can be coded	Yes	Number of rows	1
Number of solder pins per pole	1	Solder eyelet hole diameter (D)	1.2 mm
Solder eyelet hole diameter tolerance (D)+ 0,1 mm		L1 in mm	3.81 mm
L1 in inches	0.15 inch	Insulation resistance	10 <sup>6</sup> Ω
Touch-safe protection acc. to DIN VDE 0470	IP 20	Touch-safe protection acc. to DIN VDE 57 106	Safe from finger touch

**Material data**

Insulating material	PA GF	Colour	Orange
Insulating material group	II	UL 94 flammability rating	V-0
CTI	≥ 550	Contact material	Copper alloy
Contact surface	tinned	Continuous operating temp., min.	-25 °C
Continuous operating temp., max.	120 °C	Max. relative humidity during storage	93 %

**DIN IEC rating data**

Rated current, min. no. of poles (Tu=20°C)	17.5 A	Rated current, max. no. of poles (Tu=20°C)	17.1 A
Rated current, number of poles (Tu=40°C), min	17.5 A	Rated current, number of poles (Tu=40°C), max.	17.1 A
Rated voltage for surge voltage class / pollution degree III/3	160 V	Rated impulse voltage for surge voltage class/ contamination degree III/3	2.5 kV
Rated voltage for surge voltage class / pollution degree III/2	160 V	Rated impulse voltage for surge voltage class/ pollution degree III/2	2.5 kV
Rated voltage for surge voltage class / pollution degree II/2	320 V	Rated impulse voltage for surge voltage class/ pollution degree II/2	2.5 kV
Short-time withstand current resistance	3 x 1s with 76 A		

**CSA rating data**

Rated voltage (Use group B)	300 V	Rated current (use group B)	10 A
Rated voltage (use group D)	300 V	Rated current (use group D)	10 A

**UL 1059 rating data**

Rated voltage (use group B)	300 V	Rated current (use group B)	10 A
Rated voltage (use group D)	300 V	Rated current (use group D)	10 A

**Classifications**

UNSPSC	30-21-18-11	eClass 5.1	27-26-11-02
eClass 6.0	27-26-07-04	eClass 7.0	27-44-04-02

**Data sheet...****BC/SC 3.81 series**  
**SC 3.81/02/180G 3.2SN OR BX****Weidmüller Interface GmbH & Co. KG**  
Klingenbergstraße 16  
D-32758 Detmold  
Germany  
Fon: +49 5231 14-0  
Fax: +49 5231 14-292083  
www.weidmueller.com**Technical data****Notes**

Notes

- Additional colours on request
- Gold-plated contact surfaces on request
- Rated current related to rated cross-section & min. No. of poles.
- Rated data refer only to the component itself. Clearance and creepage distances to other components are to be designed in accordance with the relevant application standards.
- P on drawing = pitch

**Approvals**

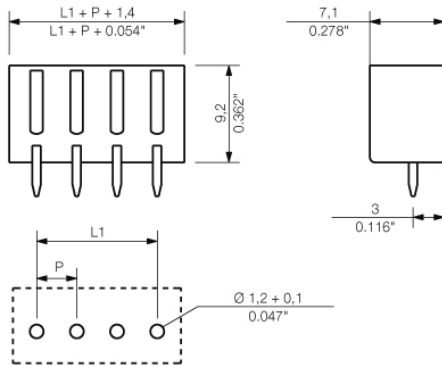
Approvals



**BC/SC 3.81 series**  
**SC 3.81/02/180G 3.2SN OR BX**

**Weidmüller Interface GmbH & Co. KG**  
 Klingenbergstraße 16  
 D-32758 Detmold  
 Germany  
 Fon: +49 5231 14-0  
 Fax: +49 5231 14-292083  
 www.weidmueller.com

**Drawings**



**BC/SC 3.81 series**  
**SC 3.81/02/180G 3.2SN OR BX**

**Weidmüller Interface GmbH & Co. KG**  
 Klingenbergstraße 16  
 D-32758 Detmold  
 Germany  
 Fon: +49 5231 14-0  
 Fax: +49 5231 14-292083  
 www.weidmueller.com

**Mating connector (conditionally pluggable)**

**BCZ 3.81/180F**



Female socket connectors with clamping-yoke screw system for connecting wires. Three wire-outlet directions are available and provide flexible connection-level design options:

- 180° wire parallel to plugging direction
- 90° wire perpendicular and above plugging direction
- 270° wire perpendicular and below plugging direction

There are three housing shapes, covering many different requirements, to choose from:

- Standard housing without flange
- Flange with screw (F)
- Flange featuring Weidmüller's patented release latch (LR) for lock-and-release latching with no strain and no tools needed.

Weidmüller's 3.81-mm-pitch (0.15 inch) plug-in connectors are compatible with the layouts of customary connectors and offer space for labelling and coding.

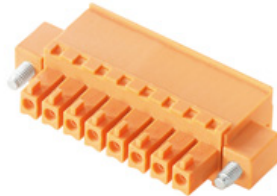
- 0.20 - 1.5 mm<sup>2</sup> (IEC) / 28 - 16 AWG (UL)
- 250 V (IEC) / 300 V (UL)
- 17.5 A (IEC) / 10 A (UL)

**General ordering data**

Order No.	Type	Version	GTIN (EAN)	Qty.	Product data	Packaging
<a href="#">1793040000</a>	BCZ 3.81/02/180F SN GN BX	PCB plug-in connector, female plug, 3.81 mm, No. of poles: 2, 180°, Clamping yoke connection, Clamping range, rated connection, max.: 1.5 mm <sup>2</sup> , Box	4032248227129	50 pc(s).	IEC: 320 V / 17.5 A / 0.2 - 1.5 mm <sup>2</sup> UL: 300 V / 10 A / AWG 28 - AWG 16	Box
<a href="#">1941010000</a>	BCZ 3.81/02/180F SN OR BX	PCB plug-in connector, female plug, 3.81 mm, No. of poles: 2, 180°, Clamping yoke connection, Clamping range, rated connection, max.: 1.5 mm <sup>2</sup> , Box	4032248655830	50 pc(s).	IEC: 320 V / 17.5 A / 0.2 - 1.5 mm <sup>2</sup> UL: 300 V / 10 A / AWG 28 - AWG 16	Box
<a href="#">1792950000</a>	BCZ 3.81/02/180F SN BK BX	PCB plug-in connector, female plug, 3.81 mm, No. of poles: 2, 180°, Clamping yoke connection, Clamping range, rated connection, max.: 1.5 mm <sup>2</sup> , Box	4032248227037	50 pc(s).	IEC: 320 V / 17.5 A / 0.2 - 1.5 mm <sup>2</sup> UL: 300 V / 10 A / AWG 28 - AWG 16	Box

**BC/SC 3.81 series  
SC 3.81/02/180G 3.2SN OR BX**

**Weidmüller Interface GmbH & Co. KG**  
 Klingenbergstraße 16  
 D-32758 Detmold  
 Germany  
 Fon: +49 5231 14-0  
 Fax: +49 5231 14-292083  
 www.weidmueller.com

**Mating connector (conditionally pluggable)**
**BCZ 3.81/270F**


Female socket connectors with clamping-yoke screw system for connecting wires.

Three wire-outlet directions are available and provide flexible connection-level design options:

- 180° wire parallel to plugging direction
- 90° wire perpendicular and above plugging direction
- 270° wire perpendicular and below plugging direction

There are three housing shapes, covering many different requirements, to choose from:

- Standard housing without flange
- Flange with screw (F)
- Flange featuring Weidmüller's patented release latch (LR) for lock-and-release latching with no strain and no tools needed.

Weidmüller's 3.81-mm-pitch (0.15 inch) plug-in connectors are compatible with the layouts of customary connectors and offer space for labelling and coding.

- 0.20 - 1.5 mm<sup>2</sup> (IEC) / 28 - 16 AWG (UL)
- 250 V (IEC) / 300 V (UL)
- 17.5 A (IEC) / 10 A (UL)

**General ordering data**

Order No.	Type	Version	GTIN (EAN)	Qty.	Product data	Packaging
<a href="#">1940460000</a>	BCZ 3.81/02/270F SN OR BX	PCB plug-in connector, female plug, 3.81 mm, No. of poles: 2, 270°, Clamping yoke connection, Clamping range, rated connection, max.: 1.5 mm <sup>2</sup> , Box	4032248656370	50 pc(s).	IEC: 320 V / 17.5 A / 0.2 - 1.5 mm <sup>2</sup> UL: 300 V / 10 A / AWG 28 - AWG 16	Box
<a href="#">1799100000</a>	BCZ 3.81/02/270F SN BK BX	PCB plug-in connector, female plug, 3.81 mm, No. of poles: 2, 270°, Clamping yoke connection, Clamping range, rated connection, max.: 1.5 mm <sup>2</sup> , Box	4032248243990	50 pc(s).	IEC: 320 V / 17.5 A / 0.2 - 1.5 mm <sup>2</sup> UL: 300 V / 10 A / AWG 28 - AWG 16	Box
<a href="#">1799170000</a>	BCZ 3.81/02/270F SN GN BX	PCB plug-in connector, female plug, 3.81 mm, No. of poles: 2, 270°, Clamping yoke connection, Clamping range, rated connection, max.: 1.5 mm <sup>2</sup> , Box	4032248244065	50 pc(s).	IEC: 320 V / 17.5 A / 0.2 - 1.5 mm <sup>2</sup> UL: 300 V / 10 A / AWG 28 - AWG 16	Box

**BC/SC 3.81 series  
SC 3.81/02/180G 3.2SN OR BX**

**Weidmüller Interface GmbH & Co. KG**  
 Klingenbergstraße 16  
 D-32758 Detmold  
 Germany  
 Fon: +49 5231 14-0  
 Fax: +49 5231 14-292083  
 www.weidmueller.com

**Mating connector (conditionally pluggable)**
**BCZ 3.81/180LR**


Female socket connectors with clamping-yoke screw system for connecting wires.

Three wire-outlet directions are available and provide flexible connection-level design options:

- 180° wire parallel to plugging direction
- 90° wire perpendicular and above plugging direction
- 270° wire perpendicular and below plugging direction

There are three housing shapes, covering many different requirements, to choose from:

- Standard housing without flange
- Flange with screw (F)
- Flange featuring Weidmüller's patented release latch (LR) for lock-and-release latching with no strain and no tools needed.

Weidmüller's 3.81-mm-pitch (0.15 inch) plug-in connectors are compatible with the layouts of customary connectors and offer space for labelling and coding.

- 0.20 - 1.5 mm<sup>2</sup> (IEC) / 28 - 16 AWG (UL)
- 250 V (IEC) / 300 V (UL)
- 17.5 A (IEC) / 10 A (UL)

**General ordering data**

Order No.	Type	Version	GTIN (EAN)	Qty.	Product data	Packaging
<a href="#">1941590000</a>	BCZ 3.81/02/180LR SN GN BX	PCB plug-in connector, female plug, 3.81 mm, No. of poles: 2, 180°, Clamping yoke connection, Clamping range, rated connection, max.: 1.5 mm <sup>2</sup> , Box	4032248698516	50 pc(s).	IEC: 320 V / 17.5 A / 0.2 - 1.5 mm <sup>2</sup> UL: 300 V / 10 A / AWG 28 - AWG 16	Box
<a href="#">1941400000</a>	BCZ 3.81/02/180LR SN OR BX	PCB plug-in connector, female plug, 3.81 mm, No. of poles: 2, 180°, Clamping yoke connection, Clamping range, rated connection, max.: 1.5 mm <sup>2</sup> , Box	4032248698325	50 pc(s).	IEC: 320 V / 17.5 A / 0.2 - 1.5 mm <sup>2</sup> UL: 300 V / 10 A / AWG 28 - AWG 16	Box
<a href="#">1941780000</a>	BCZ 3.81/02/180LR SN BK BX	PCB plug-in connector, female plug, 3.81 mm, No. of poles: 2, 180°, Clamping yoke connection, Clamping range, rated connection, max.: 1.5 mm <sup>2</sup> , Box	4032248698707	50 pc(s).	IEC: 320 V / 17.5 A / 0.2 - 1.5 mm <sup>2</sup> UL: 300 V / 10 A / AWG 28 - AWG 16	Box

**BC/SC 3.81 series  
SC 3.81/02/180G 3.2SN OR BX**

**Weidmüller Interface GmbH & Co. KG**  
 Klingenbergstraße 16  
 D-32758 Detmold  
 Germany  
 Fon: +49 5231 14-0  
 Fax: +49 5231 14-292083  
 www.weidmueller.com

**Mating connector (conditionally pluggable)**
**BCZ 3.81/90F**


Female socket connectors with clamping-yoke screw system for connecting wires.

Three wire-outlet directions are available and provide flexible connection-level design options:

- 180° wire parallel to plugging direction
- 90° wire perpendicular and above plugging direction
- 270° wire perpendicular and below plugging direction

There are three housing shapes, covering many different requirements, to choose from:

- Standard housing without flange
- Flange with screw (F)
- Flange featuring Weidmüller's patented release latch (LR) for lock-and-release latching with no strain and no tools needed.

Weidmüller's 3.81-mm-pitch (0.15 inch) plug-in connectors are compatible with the layouts of customary connectors and offer space for labelling and coding.

- 0.20 - 1.5 mm<sup>2</sup> (IEC) / 28 - 16 AWG (UL)
- 250 V (IEC) / 300 V (UL)
- 17.5 A (IEC) / 10 A (UL)

**General ordering data**

Order No.	Type	Version	GTIN (EAN)	Qty.	Product data	Packaging
<a href="#">1798850000</a>	BCZ 3.81/02/90F SN GN BX	PCB plug-in connector, female plug, 3.81 mm, No. of poles: 2, 90°, Clamping yoke connection, Clamping range, rated connection, max.: 1.5 mm <sup>2</sup> , Box	4032248243532	50 pc(s).	IEC: 320 V / 17.5 A / 0.2 - 1.5 mm <sup>2</sup> UL: 300 V / 10 A / AWG 28 - AWG 16	Box
<a href="#">1939980000</a>	BCZ 3.81/02/90F SN OR BX	PCB plug-in connector, female plug, 3.81 mm, No. of poles: 2, 90°, Clamping yoke connection, Clamping range, rated connection, max.: 1.5 mm <sup>2</sup> , Box	4032248656844	50 pc(s).	IEC: 320 V / 17.5 A / 0.2 - 1.5 mm <sup>2</sup> UL: 300 V / 10 A / AWG 28 - AWG 16	Box
<a href="#">1798780000</a>	BCZ 3.81/02/90F SN BK BX	PCB plug-in connector, female plug, 3.81 mm, No. of poles: 2, 90°, Clamping yoke connection, Clamping range, rated connection, max.: 1.5 mm <sup>2</sup> , Box	4032248243464	50 pc(s).	IEC: 320 V / 17.5 A / 0.2 - 1.5 mm <sup>2</sup> UL: 300 V / 10 A / AWG 28 - AWG 16	Box



**BC/SC 3.81 series**  
**SC 3.81/02/180G 3.2SN OR BX**

**Weidmüller Interface GmbH & Co. KG**  
 Klingenbergstraße 16  
 D-32758 Detmold  
 Germany  
 Fon: +49 5231 14-0  
 Fax: +49 5231 14-292083  
 www.weidmueller.com

**Mating connector (fully pluggable)****BCZ 3.81/90**

Female socket connectors with clamping-yoke screw system for connecting wires.

Three wire-outlet directions are available and provide flexible connection-level design options:

- 180° wire parallel to plugging direction
- 90° wire perpendicular and above plugging direction
- 270° wire perpendicular and below plugging direction

There are three housing shapes, covering many different requirements, to choose from:

- Standard housing without flange
- Flange with screw (F)
- Flange featuring Weidmüller's patented release latch (LR) for lock-and-release latching with no strain and no tools needed.

Weidmüller's 3.81-mm-pitch (0.15 inch) plug-in connectors are compatible with the layouts of customary connectors and offer space for labelling and coding.

- 0.20 - 1.5 mm<sup>2</sup> (IEC) / 28 - 16 AWG (UL)
- 250 V (IEC) / 300 V (UL)
- 17.5 A (IEC) / 10 A (UL)

**General ordering data**

Order No.	Type	Version	GTIN (EAN)	Qty.	Product data	Packaging
<a href="#">1899490000</a>	BCZ 3.81/15/90 SN GN BX	PCB plug-in connector, female plug, 3.81 mm, No. of poles: 15, 90°, Clamping yoke connection, Clamping range, rated connection, max.: 1.5 mm <sup>2</sup> , Box	4032248519392	50 pc(s).	IEC: 320 V / 17.5 A / 0.2 - 1.5 mm <sup>2</sup> UL: 300 V / 10 A / AWG 28 - AWG 16	Box
<a href="#">1939870000</a>	BCZ 3.81/06/90 SN OR BX	PCB plug-in connector, female plug, 3.81 mm, No. of poles: 6, 90°, Clamping yoke connection, Clamping range, rated connection, max.: 1.5 mm <sup>2</sup> , Box	4032248656950	50 pc(s).	IEC: 320 V / 17.5 A / 0.2 - 1.5 mm <sup>2</sup> UL: 300 V / 10 A / AWG 28 - AWG 16	Box
<a href="#">1798500000</a>	BCZ 3.81/02/90 SN BK BX	PCB plug-in connector, female plug, 3.81 mm, No. of poles: 2, 90°, Clamping yoke connection, Clamping range, rated connection, max.: 1.5 mm <sup>2</sup> , Box	4032248243006	50 pc(s).	IEC: 320 V / 17.5 A / 0.2 - 1.5 mm <sup>2</sup> UL: 300 V / 10 A / AWG 28 - AWG 16	Box
<a href="#">1798130000</a>	BCZ 3.81/08/90 SN BK BX	PCB plug-in connector, female plug, 3.81 mm, No. of poles: 8, 90°, Clamping yoke connection, Clamping range, rated connection, max.: 1.5 mm <sup>2</sup> , Box	4032248241323	50 pc(s).	IEC: 320 V / 17.5 A / 0.2 - 1.5 mm <sup>2</sup> UL: 300 V / 10 A / AWG 28 - AWG 16	Box
<a href="#">1939960000</a>	BCZ 3.81/15/90 SN OR BX	PCB plug-in connector, female plug, 3.81 mm, No. of poles: 15, 90°, Clamping yoke connection, Clamping	4032248656868	50 pc(s).	IEC: 320 V / 17.5 A / 0.2 - 1.5 mm <sup>2</sup> UL: 300 V / 10 A / AWG 28 - AWG 16	Box

Creation date February 20, 2013 9:11:21 PM CET

**BC/SC 3.81 series**  
**SC 3.81/02/180G 3.2SN OR BX**

**Weidmüller Interface GmbH & Co. KG**  
 Klringenbergstraße 16  
 D-32758 Detmold  
 Germany  
 Fon: +49 5231 14-0  
 Fax: +49 5231 14-292083  
 www.weidmueller.com

**Mating connector (fully pluggable)**

	range, rated connection, max.: 1.5 mm <sup>2</sup> , Box		
<a href="#">1798610000</a> BCZ 3.81/10/90 SN BK BX	PCB plug-in connector, female plug, 3.81 mm, No. of poles: 10, 90°, Clamping yoke connection, Clamping range, rated connection, max.: 1.5 mm <sup>2</sup> , Box	4032248243242 50 pc(s).	IEC: 320 V / 17.5 A / 0.2 - 1.5 mm <sup>2</sup> Box UL: 300 V / 10 A / AWG 28 - AWG 16
<a href="#">1939970000</a> BCZ 3.81/16/90 SN OR BX	PCB plug-in connector, female plug, 3.81 mm, No. of poles: 16, 90°, Clamping yoke connection, Clamping range, rated connection, max.: 1.5 mm <sup>2</sup> , Box	4032248656851 50 pc(s).	IEC: 320 V / 17.5 A / 0.2 - 1.5 mm <sup>2</sup> Box UL: 300 V / 10 A / AWG 28 - AWG 16
<a href="#">1899460000</a> BCZ 3.81/14/90 SN BK BX	PCB plug-in connector, female plug, 3.81 mm, No. of poles: 14, 90°, Clamping yoke connection, Clamping range, rated connection, max.: 1.5 mm <sup>2</sup> , Box	4032248519361 50 pc(s).	IEC: 320 V / 17.5 A / 0.2 - 1.5 mm <sup>2</sup> Box UL: 300 V / 10 A / AWG 28 - AWG 16
<a href="#">1939840000</a> BCZ 3.81/04/90 SN OR BX	PCB plug-in connector, female plug, 3.81 mm, No. of poles: 4, 90°, Clamping yoke connection, Clamping range, rated connection, max.: 1.5 mm <sup>2</sup> , Box	4032248653942 50 pc(s).	IEC: 320 V / 17.5 A / 0.2 - 1.5 mm <sup>2</sup> Box UL: 300 V / 10 A / AWG 28 - AWG 16
<a href="#">1798630000</a> BCZ 3.81/12/90 SN BK BX	PCB plug-in connector, female plug, 3.81 mm, No. of poles: 12, 90°, Clamping yoke connection, Clamping range, rated connection, max.: 1.5 mm <sup>2</sup> , Box	4032248243259 50 pc(s).	IEC: 320 V / 17.5 A / 0.2 - 1.5 mm <sup>2</sup> Box UL: 300 V / 10 A / AWG 28 - AWG 16
<a href="#">1939950000</a> BCZ 3.81/14/90 SN OR BX	PCB plug-in connector, female plug, 3.81 mm, No. of poles: 14, 90°, Clamping yoke connection, Clamping range, rated connection, max.: 1.5 mm <sup>2</sup> , Box	4032248656875 50 pc(s).	IEC: 320 V / 17.5 A / 0.2 - 1.5 mm <sup>2</sup> Box UL: 300 V / 10 A / AWG 28 - AWG 16
<a href="#">1798720000</a> BCZ 3.81/05/90 SN GN BX	PCB plug-in connector, female plug, 3.81 mm, No. of poles: 5, 90°, Clamping yoke connection, Clamping range, rated connection, max.: 1.5 mm <sup>2</sup> , Box	4032248243303 50 pc(s).	IEC: 320 V / 17.5 A / 0.2 - 1.5 mm <sup>2</sup> Box UL: 300 V / 10 A / AWG 28 - AWG 16
<a href="#">1798690000</a> BCZ 3.81/03/90 SN GN BX	PCB plug-in connector, female plug, 3.81 mm, No. of poles: 3, 90°, Clamping yoke connection, Clamping range, rated connection, max.: 1.5 mm <sup>2</sup> , Box	4032248243280 50 pc(s).	IEC: 320 V / 17.5 A / 0.2 - 1.5 mm <sup>2</sup> Box UL: 300 V / 10 A / AWG 28 - AWG 16
<a href="#">1899380000</a> BCZ 3.81/11/90 SN BK BX	PCB plug-in connector, female plug, 3.81 mm, No. of poles: 11, 90°, Clamping yoke connection, Clamping	4032248519286 50 pc(s).	IEC: 320 V / 17.5 A / 0.2 - 1.5 mm <sup>2</sup> Box UL: 300 V / 10 A / AWG 28 - AWG 16

**BC/SC 3.81 series**  
**SC 3.81/02/180G 3.2SN OR BX**

**Weidmüller Interface GmbH & Co. KG**  
 Klängenbergstraße 16  
 D-32758 Detmold  
 Germany  
 Fon: +49 5231 14-0  
 Fax: +49 5231 14-292083  
 www.weidmueller.com

**Mating connector (fully pluggable)**

	range, rated connection, max.: 1.5 mm <sup>2</sup> , Box		
<a href="#">1798120000</a> BCZ 3.81/03/90 SN BK BX	PCB plug-in connector, female plug, 3.81 mm, No. of poles: 3, 90°, Clamping yoke connection, Clamping range, rated connection, max.: 1.5 mm <sup>2</sup> , Box	4032248241316 50 pc(s).	IEC: 320 V / 17.5 A / 0.2 - 1.5 mm <sup>2</sup> Box UL: 300 V / 10 A / AWG 28 - AWG 16
<a href="#">1939880000</a> BCZ 3.81/07/90 SN OR BX	PCB plug-in connector, female plug, 3.81 mm, No. of poles: 7, 90°, Clamping yoke connection, Clamping range, rated connection, max.: 1.5 mm <sup>2</sup> , Box	4032248656943 50 pc(s).	IEC: 320 V / 17.5 A / 0.2 - 1.5 mm <sup>2</sup> Box UL: 300 V / 10 A / AWG 28 - AWG 16
<a href="#">1939930000</a> BCZ 3.81/12/90 SN OR BX	PCB plug-in connector, female plug, 3.81 mm, No. of poles: 12, 90°, Clamping yoke connection, Clamping range, rated connection, max.: 1.5 mm <sup>2</sup> , Box	4032248656899 50 pc(s).	IEC: 320 V / 17.5 A / 0.2 - 1.5 mm <sup>2</sup> Box UL: 300 V / 10 A / AWG 28 - AWG 16
<a href="#">1798730000</a> BCZ 3.81/06/90 SN GN BX	PCB plug-in connector, female plug, 3.81 mm, No. of poles: 6, 90°, Clamping yoke connection, Clamping range, rated connection, max.: 1.5 mm <sup>2</sup> , Box	4032248243419 50 pc(s).	IEC: 320 V / 17.5 A / 0.2 - 1.5 mm <sup>2</sup> Box UL: 300 V / 10 A / AWG 28 - AWG 16
<a href="#">1939940000</a> BCZ 3.81/13/90 SN OR BX	PCB plug-in connector, female plug, 3.81 mm, No. of poles: 13, 90°, Clamping yoke connection, Clamping range, rated connection, max.: 1.5 mm <sup>2</sup> , Box	4032248656882 50 pc(s).	IEC: 320 V / 17.5 A / 0.2 - 1.5 mm <sup>2</sup> Box UL: 300 V / 10 A / AWG 28 - AWG 16
<a href="#">1858960000</a> BCZ 3.81/07/90 SN BK BX	PCB plug-in connector, female plug, 3.81 mm, No. of poles: 7, 90°, Clamping yoke connection, Clamping range, rated connection, max.: 1.5 mm <sup>2</sup> , Box	4032248410576 50 pc(s).	IEC: 320 V / 17.5 A / 0.2 - 1.5 mm <sup>2</sup> Box UL: 300 V / 10 A / AWG 28 - AWG 16
<a href="#">1939860000</a> BCZ 3.81/05/90 SN OR BX	PCB plug-in connector, female plug, 3.81 mm, No. of poles: 5, 90°, Clamping yoke connection, Clamping range, rated connection, max.: 1.5 mm <sup>2</sup> , Box	4032248656967 50 pc(s).	IEC: 320 V / 17.5 A / 0.2 - 1.5 mm <sup>2</sup> Box UL: 300 V / 10 A / AWG 28 - AWG 16
<a href="#">1798770000</a> BCZ 3.81/16/90 SN GN BX	PCB plug-in connector, female plug, 3.81 mm, No. of poles: 16, 90°, Clamping yoke connection, Clamping range, rated connection, max.: 1.5 mm <sup>2</sup> , Box	4032248243457 50 pc(s).	IEC: 320 V / 17.5 A / 0.2 - 1.5 mm <sup>2</sup> Box UL: 300 V / 10 A / AWG 28 - AWG 16
<a href="#">1798760000</a> BCZ 3.81/12/90 SN GN BX	PCB plug-in connector, female plug, 3.81 mm, No. of poles: 12, 90°, Clamping yoke connection, Clamping	4032248243440 50 pc(s).	IEC: 320 V / 17.5 A / 0.2 - 1.5 mm <sup>2</sup> Box UL: 300 V / 10 A / AWG 28 - AWG 16

**BC/SC 3.81 series**  
**SC 3.81/02/180G 3.2SN OR BX**

**Weidmüller Interface GmbH & Co. KG**  
 Klängenbergstraße 16  
 D-32758 Detmold  
 Germany  
 Fon: +49 5231 14-0  
 Fax: +49 5231 14-292083  
 www.weidmueller.com

**Mating connector (fully pluggable)**

		range, rated connection, max.: 1.5 mm <sup>2</sup> , Box		
<a href="#">1939920000</a>	BCZ 3.81/11/90 SN OR BX	PCB plug-in connector, female plug, 3.81 mm, No. of poles: 11, 90°, Clamping yoke connection, Clamping range, rated connection, max.: 1.5 mm <sup>2</sup> , Box	4032248656905 50 pc(s).	IEC: 320 V / 17.5 A / 0.2 - 1.5 mm <sup>2</sup> Box UL: 300 V / 10 A / AWG 28 - AWG 16
<a href="#">1899500000</a>	BCZ 3.81/15/90 SN BK BX	PCB plug-in connector, female plug, 3.81 mm, No. of poles: 15, 90°, Clamping yoke connection, Clamping range, rated connection, max.: 1.5 mm <sup>2</sup> , Box	4032248519408 50 pc(s).	IEC: 320 V / 17.5 A / 0.2 - 1.5 mm <sup>2</sup> Box UL: 300 V / 10 A / AWG 28 - AWG 16
<a href="#">1939910000</a>	BCZ 3.81/10/90 SN OR BX	PCB plug-in connector, female plug, 3.81 mm, No. of poles: 10, 90°, Clamping yoke connection, Clamping range, rated connection, max.: 1.5 mm <sup>2</sup> , Box	4032248656912 50 pc(s).	IEC: 320 V / 17.5 A / 0.2 - 1.5 mm <sup>2</sup> Box UL: 300 V / 10 A / AWG 28 - AWG 16
<a href="#">1899450000</a>	BCZ 3.81/14/90 SN GN BX	PCB plug-in connector, female plug, 3.81 mm, No. of poles: 14, 90°, Clamping yoke connection, Clamping range, rated connection, max.: 1.5 mm <sup>2</sup> , Box	4032248519354 50 pc(s).	IEC: 320 V / 17.5 A / 0.2 - 1.5 mm <sup>2</sup> Box UL: 300 V / 10 A / AWG 28 - AWG 16
<a href="#">1899410000</a>	BCZ 3.81/13/90 SN GN BX	PCB plug-in connector, female plug, 3.81 mm, No. of poles: 13, 90°, Clamping yoke connection, Clamping range, rated connection, max.: 1.5 mm <sup>2</sup> , Box	4032248519316 50 pc(s).	IEC: 320 V / 17.5 A / 0.2 - 1.5 mm <sup>2</sup> Box UL: 300 V / 10 A / AWG 28 - AWG 16
<a href="#">1939900000</a>	BCZ 3.81/09/90 SN OR BX	PCB plug-in connector, female plug, 3.81 mm, No. of poles: 9, 90°, Clamping yoke connection, Clamping range, rated connection, max.: 1.5 mm <sup>2</sup> , Box	4032248656929 50 pc(s).	IEC: 320 V / 17.5 A / 0.2 - 1.5 mm <sup>2</sup> Box UL: 300 V / 10 A / AWG 28 - AWG 16
<a href="#">1899420000</a>	BCZ 3.81/13/90 SN BK BX	PCB plug-in connector, female plug, 3.81 mm, No. of poles: 13, 90°, Clamping yoke connection, Clamping range, rated connection, max.: 1.5 mm <sup>2</sup> , Box	4032248519323 50 pc(s).	IEC: 320 V / 17.5 A / 0.2 - 1.5 mm <sup>2</sup> Box UL: 300 V / 10 A / AWG 28 - AWG 16
<a href="#">1798710000</a>	BCZ 3.81/04/90 SN GN BX	PCB plug-in connector, female plug, 3.81 mm, No. of poles: 4, 90°, Clamping yoke connection, Clamping range, rated connection, max.: 1.5 mm <sup>2</sup> , Box	4032248243297 50 pc(s).	IEC: 320 V / 17.5 A / 0.2 - 1.5 mm <sup>2</sup> Box UL: 300 V / 10 A / AWG 28 - AWG 16
<a href="#">1798570000</a>	BCZ 3.81/05/90 SN BK BX	PCB plug-in connector, female plug, 3.81 mm, No. of poles: 5, 90°, Clamping yoke connection, Clamping	4032248243228 50 pc(s).	IEC: 320 V / 17.5 A / 0.2 - 1.5 mm <sup>2</sup> Box UL: 300 V / 10 A / AWG 28 - AWG 16

**BC/SC 3.81 series**  
**SC 3.81/02/180G 3.2SN OR BX**

**Weidmüller Interface GmbH & Co. KG**  
 Klringenbergstraße 16  
 D-32758 Detmold  
 Germany  
 Fon: +49 5231 14-0  
 Fax: +49 5231 14-292083  
 www.weidmueller.com

**Mating connector (fully pluggable)**

	range, rated connection, max.: 1.5 mm <sup>2</sup> , Box		
<a href="#">1798590000</a> BCZ 3.81/06/90 SN BK BX	PCB plug-in connector, female plug, 3.81 mm, No. of poles: 6, 90°, Clamping yoke connection, Clamping range, rated connection, max.: 1.5 mm <sup>2</sup> , Box	4032248243235 50 pc(s).	IEC: 320 V / 17.5 A / 0.2 - 1.5 mm <sup>2</sup> Box UL: 300 V / 10 A / AWG 28 - AWG 16
<a href="#">1798750000</a> BCZ 3.81/10/90 SN GN BX	PCB plug-in connector, female plug, 3.81 mm, No. of poles: 10, 90°, Clamping yoke connection, Clamping range, rated connection, max.: 1.5 mm <sup>2</sup> , Box	4032248243433 50 pc(s).	IEC: 320 V / 17.5 A / 0.2 - 1.5 mm <sup>2</sup> Box UL: 300 V / 10 A / AWG 28 - AWG 16
<a href="#">1939820000</a> BCZ 3.81/02/90 SN OR BX	PCB plug-in connector, female plug, 3.81 mm, No. of poles: 2, 90°, Clamping yoke connection, Clamping range, rated connection, max.: 1.5 mm <sup>2</sup> , Box	4032248653966 50 pc(s).	IEC: 320 V / 17.5 A / 0.2 - 1.5 mm <sup>2</sup> Box UL: 300 V / 10 A / AWG 28 - AWG 16
<a href="#">1939830000</a> BCZ 3.81/03/90 SN OR BX	PCB plug-in connector, female plug, 3.81 mm, No. of poles: 3, 90°, Clamping yoke connection, Clamping range, rated connection, max.: 1.5 mm <sup>2</sup> , Box	4032248653959 50 pc(s).	IEC: 320 V / 17.5 A / 0.2 - 1.5 mm <sup>2</sup> Box UL: 300 V / 10 A / AWG 28 - AWG 16
<a href="#">1798740000</a> BCZ 3.81/08/90 SN GN BX	PCB plug-in connector, female plug, 3.81 mm, No. of poles: 8, 90°, Clamping yoke connection, Clamping range, rated connection, max.: 1.5 mm <sup>2</sup> , Box	4032248243426 50 pc(s).	IEC: 320 V / 17.5 A / 0.2 - 1.5 mm <sup>2</sup> Box UL: 300 V / 10 A / AWG 28 - AWG 16
<a href="#">1798550000</a> BCZ 3.81/04/90 SN BK BX	PCB plug-in connector, female plug, 3.81 mm, No. of poles: 4, 90°, Clamping yoke connection, Clamping range, rated connection, max.: 1.5 mm <sup>2</sup> , Box	4032248243211 50 pc(s).	IEC: 320 V / 17.5 A / 0.2 - 1.5 mm <sup>2</sup> Box UL: 300 V / 10 A / AWG 28 - AWG 16
<a href="#">1899370000</a> BCZ 3.81/11/90 SN GN BX	PCB plug-in connector, female plug, 3.81 mm, No. of poles: 11, 90°, Clamping yoke connection, Clamping range, rated connection, max.: 1.5 mm <sup>2</sup> , Box	4032248519279 50 pc(s).	IEC: 320 V / 17.5 A / 0.2 - 1.5 mm <sup>2</sup> Box UL: 300 V / 10 A / AWG 28 - AWG 16
<a href="#">1798660000</a> BCZ 3.81/16/90 SN BK BX	PCB plug-in connector, female plug, 3.81 mm, No. of poles: 16, 90°, Clamping yoke connection, Clamping range, rated connection, max.: 1.5 mm <sup>2</sup> , Box	4032248243266 50 pc(s).	IEC: 320 V / 17.5 A / 0.2 - 1.5 mm <sup>2</sup> Box UL: 300 V / 10 A / AWG 28 - AWG 16
<a href="#">1798680000</a> BCZ 3.81/02/90 SN GN BX	PCB plug-in connector, female plug, 3.81 mm, No. of poles: 2, 90°, Clamping yoke connection, Clamping	4032248243273 50 pc(s).	IEC: 320 V / 17.5 A / 0.2 - 1.5 mm <sup>2</sup> Box UL: 300 V / 10 A / AWG 28 - AWG 16

**BC/SC 3.81 series  
SC 3.81/02/180G 3.2SN OR BX**

**Weidmüller Interface GmbH & Co. KG**  
Klingenbergstraße 16  
D-32758 Detmold  
Germany  
Fon: +49 5231 14-0  
Fax: +49 5231 14-292083  
www.weidmueller.com

**Mating connector (fully pluggable)**

range, rated connection,  
max.: 1.5 mm<sup>2</sup>, Box

<a href="#">1939890000</a> BCZ 3.81/08/90 SN OR BX	PCB plug-in connector, female plug, 3.81 mm, No. of poles: 8, 90°, Clamping yoke connection, Clamping range, rated connection, max.: 1.5 mm <sup>2</sup> , Box	4032248656936 50 pc(s).	IEC: 320 V / 17.5 A / 0.2 - 1.5 mm <sup>2</sup> Box UL: 300 V / 10 A / AWG 28 - AWG 16
--	---	-------------------------	---

**BCZ 3.81/180ZE**


Female socket connectors with clamping-yoke screw system for connecting wires.

Three wire-outlet directions are available and provide flexible connection-level design options:

- 180° wire parallel to plugging direction
- 90° wire perpendicular and above plugging direction
- 270° wire perpendicular and below plugging direction

There are three housing shapes, covering many different requirements, to choose from:

- Standard housing without flange
- Flange with screw (F)
- Flange featuring Weidmüller's patented release latch (LR) for lock-and-release latching with no strain and no tools needed.

Weidmüller's 3.81-mm-pitch (0.15 inch) plug-in connectors are compatible with the layouts of customary connectors and offer space for labelling and coding.

- 0.20 - 1.5 mm<sup>2</sup> (IEC) / 28 - 16 AWG (UL)
- 250 V (IEC) / 300 V (UL)
- 17.5 A (IEC) / 10 A (UL)

**General ordering data**

Order No.	Type	Version	GTIN (EAN)	Qty.	Product data
<a href="#">1236430000</a>	BCZ 3.81/18/180ZE SN OR BX	PCB plug-in connector, female plug, 3.81 mm, No. of poles: 18, 180°, Clamping yoke connection, Clamping range, rated connection, max.: 1.5 mm <sup>2</sup>	4050118021776	50 pc(s).	IEC: 320 V / 17.5 A / 0.2 - 1.5 mm <sup>2</sup> UL: 300 V / 10 A / AWG 28 - AWG 16
<a href="#">1941970000</a>	BCZ 3.81/08/180ZE SN BK BX	PCB plug-in connector, female plug, 3.81 mm, No. of poles: 8, 180°, Clamping yoke connection, Clamping range, rated connection, max.: 1.5 mm <sup>2</sup> , Box	4032248698783	50 pc(s).	IEC: 320 V / 17.5 A / 0.2 - 1.5 mm <sup>2</sup> Box UL: 300 V / 10 A / AWG 28 - AWG 16
<a href="#">1071970000</a>	BCZ 3.81/07/180ZE SN BK BX	PCB plug-in connector, female plug, 3.81 mm, No. of poles: 7, 180°, Clamping yoke connection, Clamping range, rated connection, max.: 1.5 mm <sup>2</sup> , Box	4032248830428	50 pc(s).	IEC: 320 V / 17.5 A / 0.2 - 1.5 mm <sup>2</sup> Box UL: 300 V / 10 A / AWG 28 - AWG 16

**BC/SC 3.81 series**  
**SC 3.81/02/180G 3.2SN OR BX**

**Weidmüller Interface GmbH & Co. KG**  
 Klingenbergstraße 16  
 D-32758 Detmold  
 Germany  
 Fon: +49 5231 14-0  
 Fax: +49 5231 14-292083  
 www.weidmueller.com

**Mating connector (fully pluggable)**

<a href="#">1236380000</a> BCZ 3.81/13/180ZE SN OR BX	PCB plug-in connector, female plug, 3.81 mm, No. of poles: 13, 180°, Clamping yoke connection, Clamping range, rated connection, max.: 1.5 mm <sup>2</sup>	4050118021738 50 pc(s).	IEC: 320 V / 17.5 A / 0.2 - 1.5 mm <sup>2</sup> UL: 300 V / 10 A / AWG 28 - AWG 16
<a href="#">1072020000</a> BCZ 3.81/11/180ZE SN BK BX	PCB plug-in connector, female plug, 3.81 mm, No. of poles: 11, 180°, Clamping yoke connection, Clamping range, rated connection, max.: 1.5 mm <sup>2</sup> , Box	4032248830459 50 pc(s).	IEC: 320 V / 17.5 A / 0.2 - 1.5 mm <sup>2</sup> Box UL: 300 V / 10 A / AWG 28 - AWG 16
<a href="#">1236410000</a> BCZ 3.81/16/180ZE SN OR BX	PCB plug-in connector, female plug, 3.81 mm, No. of poles: 16, 180°, Clamping yoke connection, Clamping range, rated connection, max.: 1.5 mm <sup>2</sup>	4050118021455 50 pc(s).	IEC: 320 V / 17.5 A / 0.2 - 1.5 mm <sup>2</sup> UL: 300 V / 10 A / AWG 28 - AWG 16
<a href="#">1071960000</a> BCZ 3.81/06/180ZE SN BK BX	PCB plug-in connector, female plug, 3.81 mm, No. of poles: 6, 180°, Clamping yoke connection, Clamping range, rated connection, max.: 1.5 mm <sup>2</sup> , Box	4032248830411 50 pc(s).	IEC: 320 V / 17.5 A / 0.2 - 1.5 mm <sup>2</sup> Box UL: 300 V / 10 A / AWG 28 - AWG 16
<a href="#">1236300000</a> BCZ 3.81/08/180ZE SN OR BX	PCB plug-in connector, female plug, 3.81 mm, No. of poles: 8, 180°, Clamping yoke connection, Clamping range, rated connection, max.: 1.5 mm <sup>2</sup>	4050118021639 50 pc(s).	IEC: 320 V / 17.5 A / 0.2 - 1.5 mm <sup>2</sup> UL: 300 V / 10 A / AWG 28 - AWG 16
<a href="#">1236400000</a> BCZ 3.81/15/180ZE SN OR BX	PCB plug-in connector, female plug, 3.81 mm, No. of poles: 15, 180°, Clamping yoke connection, Clamping range, rated connection, max.: 1.5 mm <sup>2</sup>	4050118021622 50 pc(s).	IEC: 320 V / 17.5 A / 0.2 - 1.5 mm <sup>2</sup> UL: 300 V / 10 A / AWG 28 - AWG 16
<a href="#">1236420000</a> BCZ 3.81/17/180ZE SN OR BX	PCB plug-in connector, female plug, 3.81 mm, No. of poles: 17, 180°, Clamping yoke connection, Clamping range, rated connection, max.: 1.5 mm <sup>2</sup>	4050118021479 50 pc(s).	IEC: 320 V / 17.5 A / 0.2 - 1.5 mm <sup>2</sup> UL: 300 V / 10 A / AWG 28 - AWG 16
<a href="#">1072090000</a> BCZ 3.81/18/180ZE SN BK BX	PCB plug-in connector, female plug, 3.81 mm, No. of poles: 18, 180°, Clamping yoke connection, Clamping range, rated connection, max.: 1.5 mm <sup>2</sup> , Box	4032248830527 50 pc(s).	IEC: 320 V / 17.5 A / 0.2 - 1.5 mm <sup>2</sup> Box UL: 300 V / 10 A / AWG 28 - AWG 16
<a href="#">1071950000</a> BCZ 3.81/05/180ZE SN BK BX	PCB plug-in connector, female plug, 3.81 mm, No. of poles: 5, 180°, Clamping yoke connection, Clamping	4032248830404 50 pc(s).	IEC: 320 V / 17.5 A / 0.2 - 1.5 mm <sup>2</sup> Box UL: 300 V / 10 A / AWG 28 - AWG 16

**BC/SC 3.81 series**  
**SC 3.81/02/180G 3.2SN OR BX**

**Weidmüller Interface GmbH & Co. KG**  
 Klingenbergstraße 16  
 D-32758 Detmold  
 Germany  
 Fon: +49 5231 14-0  
 Fax: +49 5231 14-292083  
 www.weidmueller.com

**Mating connector (fully pluggable)**

	range, rated connection, max.: 1.5 mm <sup>2</sup> , Box		
<a href="#">1236330000</a> BCZ 3.81/10/180ZE SN OR BX	PCB plug-in connector, female plug, 3.81 mm, No. of poles: 10, 180°, Clamping yoke connection, Clamping range, rated connection, max.: 1.5 mm <sup>2</sup>	4050118021677 50 pc(s).	IEC: 320 V / 17.5 A / 0.2 - 1.5 mm <sup>2</sup> UL: 300 V / 10 A / AWG 28 - AWG 16
<a href="#">1072040000</a> BCZ 3.81/13/180ZE SN BK BX	PCB plug-in connector, female plug, 3.81 mm, No. of poles: 13, 180°, Clamping yoke connection, Clamping range, rated connection, max.: 1.5 mm <sup>2</sup> , Box	4032248830473 50 pc(s).	IEC: 320 V / 17.5 A / 0.2 - 1.5 mm <sup>2</sup> Box UL: 300 V / 10 A / AWG 28 - AWG 16
<a href="#">1236270000</a> BCZ 3.81/05/180ZE SN OR BX	PCB plug-in connector, female plug, 3.81 mm, No. of poles: 5, 180°, Clamping yoke connection, Clamping range, rated connection, max.: 1.5 mm <sup>2</sup>	4050118021653 50 pc(s).	IEC: 320 V / 17.5 A / 0.2 - 1.5 mm <sup>2</sup> UL: 300 V / 10 A / AWG 28 - AWG 16
<a href="#">1072070000</a> BCZ 3.81/16/180ZE SN BK BX	PCB plug-in connector, female plug, 3.81 mm, No. of poles: 16, 180°, Clamping yoke connection, Clamping range, rated connection, max.: 1.5 mm <sup>2</sup> , Box	4032248830503 50 pc(s).	IEC: 320 V / 17.5 A / 0.2 - 1.5 mm <sup>2</sup> Box UL: 300 V / 10 A / AWG 28 - AWG 16
<a href="#">1236390000</a> BCZ 3.81/14/180ZE SN OR BX	PCB plug-in connector, female plug, 3.81 mm, No. of poles: 14, 180°, Clamping yoke connection, Clamping range, rated connection, max.: 1.5 mm <sup>2</sup>	4050118021493 50 pc(s).	IEC: 320 V / 17.5 A / 0.2 - 1.5 mm <sup>2</sup> UL: 300 V / 10 A / AWG 28 - AWG 16
<a href="#">1236340000</a> BCZ 3.81/11/180ZE SN OR BX	PCB plug-in connector, female plug, 3.81 mm, No. of poles: 11, 180°, Clamping yoke connection, Clamping range, rated connection, max.: 1.5 mm <sup>2</sup>	4050118021448 50 pc(s).	IEC: 320 V / 17.5 A / 0.2 - 1.5 mm <sup>2</sup> UL: 300 V / 10 A / AWG 28 - AWG 16
<a href="#">1072120000</a> BCZ 3.81/20/180ZE SN BK BX	PCB plug-in connector, female plug, 3.81 mm, No. of poles: 20, 180°, Clamping yoke connection, Clamping range, rated connection, max.: 1.5 mm <sup>2</sup> , Box	4032248830541 50 pc(s).	IEC: 320 V / 17.5 A / 0.2 - 1.5 mm <sup>2</sup> Box UL: 300 V / 10 A / AWG 28 - AWG 16
<a href="#">1236470000</a> BCZ 3.81/20/180ZE SN OR BX	PCB plug-in connector, female plug, 3.81 mm, No. of poles: 20, 180°, Clamping yoke connection, Clamping range, rated connection, max.: 1.5 mm <sup>2</sup>	4050118021752 50 pc(s).	IEC: 320 V / 17.5 A / 0.2 - 1.5 mm <sup>2</sup> UL: 300 V / 10 A / AWG 28 - AWG 16
<a href="#">1236290000</a> BCZ 3.81/07/180ZE SN OR BX	PCB plug-in connector, female plug, 3.81 mm, No.	4050118021578 50 pc(s).	IEC: 320 V / 17.5 A / 0.2 - 1.5 mm <sup>2</sup> UL: 300 V / 10 A / AWG 28 - AWG 16

Creation date February 20, 2013 9:11:21 PM CET



**BC/SC 3.81 series**  
**SC 3.81/02/180G 3.2SN OR BX**

**Weidmüller Interface GmbH & Co. KG**  
 Klingenbergstraße 16  
 D-32758 Detmold  
 Germany  
 Fon: +49 5231 14-0  
 Fax: +49 5231 14-292083  
 www.weidmueller.com

**Mating connector (fully pluggable)**

	of poles: 7, 180°, Clamping yoke connection, Clamping range, rated connection, max.: 1.5 mm <sup>2</sup>		
<a href="#">1072030000</a> BCZ 3.81/12/180ZE SN BK BX	PCB plug-in connector, female plug, 3.81 mm, No. of poles: 12, 180°, Clamping yoke connection, Clamping range, rated connection, max.: 1.5 mm <sup>2</sup> , Box	4032248830466 50 pc(s).	IEC: 320 V / 17.5 A / 0.2 - 1.5 mm <sup>2</sup> Box UL: 300 V / 10 A / AWG 28 - AWG 16
<a href="#">1236440000</a> BCZ 3.81/19/180ZE SN OR BX	PCB plug-in connector, female plug, 3.81 mm, No. of poles: 19, 180°, Clamping yoke connection, Clamping range, rated connection, max.: 1.5 mm <sup>2</sup>	4050118021721 50 pc(s).	IEC: 320 V / 17.5 A / 0.2 - 1.5 mm <sup>2</sup> UL: 300 V / 10 A / AWG 28 - AWG 16
<a href="#">1236280000</a> BCZ 3.81/06/180ZE SN OR BX	PCB plug-in connector, female plug, 3.81 mm, No. of poles: 6, 180°, Clamping yoke connection, Clamping range, rated connection, max.: 1.5 mm <sup>2</sup>	4050118021592 50 pc(s).	IEC: 320 V / 17.5 A / 0.2 - 1.5 mm <sup>2</sup> UL: 300 V / 10 A / AWG 28 - AWG 16
<a href="#">1236320000</a> BCZ 3.81/09/180ZE SN OR BX	PCB plug-in connector, female plug, 3.81 mm, No. of poles: 9, 180°, Clamping yoke connection, Clamping range, rated connection, max.: 1.5 mm <sup>2</sup>	4050118021691 50 pc(s).	IEC: 320 V / 17.5 A / 0.2 - 1.5 mm <sup>2</sup> UL: 300 V / 10 A / AWG 28 - AWG 16
<a href="#">1072050000</a> BCZ 3.81/14/180ZE SN BK BX	PCB plug-in connector, female plug, 3.81 mm, No. of poles: 14, 180°, Clamping yoke connection, Clamping range, rated connection, max.: 1.5 mm <sup>2</sup> , Box	4032248830480 50 pc(s).	IEC: 320 V / 17.5 A / 0.2 - 1.5 mm <sup>2</sup> Box UL: 300 V / 10 A / AWG 28 - AWG 16
<a href="#">1236370000</a> BCZ 3.81/12/180ZE SN OR BX	PCB plug-in connector, female plug, 3.81 mm, No. of poles: 12, 180°, Clamping yoke connection, Clamping range, rated connection, max.: 1.5 mm <sup>2</sup>	4050118021585 50 pc(s).	IEC: 320 V / 17.5 A / 0.2 - 1.5 mm <sup>2</sup> UL: 300 V / 10 A / AWG 28 - AWG 16
<a href="#">1072080000</a> BCZ 3.81/17/180ZE SN BK BX	PCB plug-in connector, female plug, 3.81 mm, No. of poles: 17, 180°, Clamping yoke connection, Clamping range, rated connection, max.: 1.5 mm <sup>2</sup> , Box	4032248830510 50 pc(s).	IEC: 320 V / 17.5 A / 0.2 - 1.5 mm <sup>2</sup> Box UL: 300 V / 10 A / AWG 28 - AWG 16
<a href="#">1072060000</a> BCZ 3.81/15/180ZE SN BK BX	PCB plug-in connector, female plug, 3.81 mm, No. of poles: 15, 180°, Clamping yoke connection, Clamping range, rated connection, max.: 1.5 mm <sup>2</sup>	4032248830497 50 pc(s).	IEC: 320 V / 17.5 A / 0.2 - 1.5 mm <sup>2</sup> Box UL: 300 V / 10 A / AWG 28 - AWG 16

**BC/SC 3.81 series  
SC 3.81/02/180G 3.2SN OR BX**

**Weidmüller Interface GmbH & Co. KG**  
 Klingenbergstraße 16  
 D-32758 Detmold  
 Germany  
 Fon: +49 5231 14-0  
 Fax: +49 5231 14-292083  
 www.weidmueller.com

**Mating connector (fully pluggable)**

	connection, max.: 1.5 mm <sup>2</sup> , Box		
<a href="#">1071980000</a> BCZ 3.81/09/180ZE SN BK BX	PCB plug-in connector, female plug, 3.81 mm, No. of poles: 9, 180°, Clamping yoke connection, Clamping range, rated connection, max.: 1.5 mm <sup>2</sup> , Box	4032248830435 50 pc(s).	IEC: 320 V / 17.5 A / 0.2 - 1.5 mm <sup>2</sup> Box UL: 300 V / 10 A / AWG 28 - AWG 16
<a href="#">1072010000</a> BCZ 3.81/10/180ZE SN BK BX	PCB plug-in connector, female plug, 3.81 mm, No. of poles: 10, 180°, Clamping yoke connection, Clamping range, rated connection, max.: 1.5 mm <sup>2</sup> , Box	4032248830442 50 pc(s).	IEC: 320 V / 17.5 A / 0.2 - 1.5 mm <sup>2</sup> Box UL: 300 V / 10 A / AWG 28 - AWG 16
<a href="#">1072110000</a> BCZ 3.81/19/180ZE SN BK BX	PCB plug-in connector, female plug, 3.81 mm, No. of poles: 19, 180°, Clamping yoke connection, Clamping range, rated connection, max.: 1.5 mm <sup>2</sup> , Box	4032248830534 50 pc(s).	IEC: 320 V / 17.5 A / 0.2 - 1.5 mm <sup>2</sup> Box UL: 300 V / 10 A / AWG 28 - AWG 16

**BCZ 3.81/180**


Female socket connectors with clamping-yoke screw system for connecting wires.

Three wire-outlet directions are available and provide flexible connection-level design options:

- 180° wire parallel to plugging direction
- 90° wire perpendicular and above plugging direction
- 270° wire perpendicular and below plugging direction

There are three housing shapes, covering many different requirements, to choose from:

- Standard housing without flange
- Flange with screw (F)
- Flange featuring Weidmüller's patented release latch (LR) for lock-and-release latching with no strain and no tools needed.

Weidmüller's 3.81-mm-pitch (0.15 inch) plug-in connectors are compatible with the layouts of customary connectors and offer space for labelling and coding.

- 0.20 - 1.5 mm<sup>2</sup> (IEC) / 28 - 16 AWG (UL)
- 250 V (IEC) / 300 V (UL)
- 17.5 A (IEC) / 10 A (UL)

**General ordering data**

Order No.	Type	Version	GTIN (EAN)	Qty.	Product data	Packaging
<a href="#">1792920000</a>	BCZ 3.81/10/180 SN GN BX	PCB plug-in connector, female plug, 3.81 mm, No. of poles: 10, 180°, Clamping yoke connection,	4032248227006	50 pc(s).	IEC: 320 V / 17.5 A / 0.2 - 1.5 mm <sup>2</sup> UL: 300 V / 10 A / AWG 28 - AWG 16	Box

Creation date February 20, 2013 9:11:21 PM CET

**BC/SC 3.81 series**  
**SC 3.81/02/180G 3.2SN OR BX**

**Weidmüller Interface GmbH & Co. KG**  
 Klingenbergstraße 16  
 D-32758 Detmold  
 Germany  
 Fon: +49 5231 14-0  
 Fax: +49 5231 14-292083  
 www.weidmueller.com

**Mating connector (fully pluggable)**

		Clamping range, rated connection, max.: 1.5 mm <sup>2</sup> , Box		
<a href="#">1940860000</a>	BCZ 3.81/15/180 SN OR BX	PCB plug-in connector, female plug, 3.81 mm, No. of poles: 15, 180°, Clamping yoke connection, Clamping range, rated connection, max.: 1.5 mm <sup>2</sup> , Box	4032248655977 50 pc(s).	IEC: 320 V / 17.5 A / 0.2 - 1.5 mm <sup>2</sup> Box UL: 300 V / 10 A / AWG 28 - AWG 16
<a href="#">1816370000</a>	BCZ 3.81/10/180 SN GN PRT BX	PCB plug-in connector, female plug, 3.81 mm, No. of poles: 10, 180°, Clamping yoke connection, Clamping range, rated connection, max.: 1.5 mm <sup>2</sup> , Box	4032248306992 50 pc(s).	IEC: 320 V / 17.5 A / 0.2 - 1.5 mm <sup>2</sup> Box UL: 300 V / 10 A / AWG 28 - AWG 16
<a href="#">1899400000</a>	BCZ 3.81/11/180 SN BK BX	PCB plug-in connector, female plug, 3.81 mm, No. of poles: 11, 180°, Clamping yoke connection, Clamping range, rated connection, max.: 1.5 mm <sup>2</sup> , Box	4032248519309 50 pc(s).	IEC: 320 V / 17.5 A / 0.2 - 1.5 mm <sup>2</sup> Box UL: 300 V / 10 A / AWG 28 - AWG 16
<a href="#">1094960000</a>	BCZ 3.81/04/180 SN OR BX PRT	PCB plug-in connector, female plug, 3.81 mm, No. of poles: 4, 180°, Clamping yoke connection, Clamping range, rated connection, max.: 1.5 mm <sup>2</sup> , Box	4032248866854 50 pc(s).	IEC: 320 V / 17.5 A / 0.2 - 1.5 mm <sup>2</sup> Box UL: 300 V / 10 A / AWG 28 - AWG 16
<a href="#">1899390000</a>	BCZ 3.81/11/180 SN GN BX	PCB plug-in connector, female plug, 3.81 mm, No. of poles: 11, 180°, Clamping yoke connection, Clamping range, rated connection, max.: 1.5 mm <sup>2</sup> , Box	4032248519293 50 pc(s).	IEC: 320 V / 17.5 A / 0.2 - 1.5 mm <sup>2</sup> Box UL: 300 V / 10 A / AWG 28 - AWG 16
<a href="#">1940730000</a>	BCZ 3.81/02/180 SN OR BX	PCB plug-in connector, female plug, 3.81 mm, No. of poles: 2, 180°, Clamping yoke connection, Clamping range, rated connection, max.: 1.5 mm <sup>2</sup> , Box	4032248656103 50 pc(s).	IEC: 320 V / 17.5 A / 0.2 - 1.5 mm <sup>2</sup> Box UL: 300 V / 10 A / AWG 28 - AWG 16
<a href="#">1807260000</a>	BCZ 3.81/03/180 SN GN BX PRT	PCB plug-in connector, female plug, 3.81 mm, No. of poles: 3, 180°, Clamping yoke connection, Clamping range, rated connection, max.: 1.5 mm <sup>2</sup> , Box	4032248278275 50 pc(s).	IEC: 320 V / 17.5 A / 0.2 - 1.5 mm <sup>2</sup> Box UL: 300 V / 10 A / AWG 28 - AWG 16
<a href="#">1940820000</a>	BCZ 3.81/11/180 SN OR BX	PCB plug-in connector, female plug, 3.81 mm, No. of poles: 11, 180°, Clamping yoke connection, Clamping range, rated connection, max.: 1.5 mm <sup>2</sup> , Box	4032248656011 50 pc(s).	IEC: 320 V / 17.5 A / 0.2 - 1.5 mm <sup>2</sup> Box UL: 300 V / 10 A / AWG 28 - AWG 16

**BC/SC 3.81 series**  
**SC 3.81/02/180G 3.2SN OR BX**

**Weidmüller Interface GmbH & Co. KG**  
 Klängenbergstraße 16  
 D-32758 Detmold  
 Germany  
 Fon: +49 5231 14-0  
 Fax: +49 5231 14-292083  
 www.weidmueller.com

**Mating connector (fully pluggable)**

	connection, max.: 1.5 mm <sup>2</sup> , Box		
<a href="#">1792890000</a> BCZ 3.81/05/180 SN GN BX	PCB plug-in connector, female plug, 3.81 mm, No. of poles: 5, 180°, Clamping yoke connection, Clamping range, rated connection, max.: 1.5 mm <sup>2</sup> , Box	4032248226979 50 pc(s).	IEC: 320 V / 17.5 A / 0.2 - 1.5 mm <sup>2</sup> Box UL: 300 V / 10 A / AWG 28 - AWG 16
<a href="#">1940900000</a> BCZ 3.81/18/180 SN OR BX	PCB plug-in connector, female plug, 3.81 mm, No. of poles: 18, 180°, Clamping yoke connection, Clamping range, rated connection, max.: 1.5 mm <sup>2</sup> , Box	4032248655946 50 pc(s).	IEC: 320 V / 17.5 A / 0.2 - 1.5 mm <sup>2</sup> Box UL: 300 V / 10 A / AWG 28 - AWG 16
<a href="#">1792870000</a> BCZ 3.81/03/180 SN GN BX	PCB plug-in connector, female plug, 3.81 mm, No. of poles: 3, 180°, Clamping yoke connection, Clamping range, rated connection, max.: 1.5 mm <sup>2</sup> , Box	4032248226955 50 pc(s).	IEC: 320 V / 17.5 A / 0.2 - 1.5 mm <sup>2</sup> Box UL: 300 V / 10 A / AWG 28 - AWG 16
<a href="#">1940800000</a> BCZ 3.81/09/180 SN OR BX	PCB plug-in connector, female plug, 3.81 mm, No. of poles: 9, 180°, Clamping yoke connection, Clamping range, rated connection, max.: 1.5 mm <sup>2</sup> , Box	4032248656035 50 pc(s).	IEC: 320 V / 17.5 A / 0.2 - 1.5 mm <sup>2</sup> Box UL: 300 V / 10 A / AWG 28 - AWG 16
<a href="#">1940880000</a> BCZ 3.81/17/180 SN OR BX	PCB plug-in connector, female plug, 3.81 mm, No. of poles: 17, 180°, Clamping yoke connection, Clamping range, rated connection, max.: 1.5 mm <sup>2</sup> , Box	50 pc(s).	IEC: 320 V / 17.5 A / 0.2 - 1.5 mm <sup>2</sup> Box UL: 300 V / 10 A / AWG 28 - AWG 16
<a href="#">1077880000</a> BCZ 3.81/04/180 SN BK BX PRT	PCB plug-in connector, female plug, 3.81 mm, No. of poles: 4, 180°, Clamping yoke connection, Clamping range, rated connection, max.: 1.5 mm <sup>2</sup> , Box	4032248837519 50 pc(s).	IEC: 320 V / 17.5 A / 0.2 - 1.5 mm <sup>2</sup> Box UL: 300 V / 10 A / AWG 28 - AWG 16
<a href="#">1792830000</a> BCZ 3.81/10/180 SN BK BX	PCB plug-in connector, female plug, 3.81 mm, No. of poles: 10, 180°, Clamping yoke connection, Clamping range, rated connection, max.: 1.5 mm <sup>2</sup> , Box	4032248226917 50 pc(s).	IEC: 320 V / 17.5 A / 0.2 - 1.5 mm <sup>2</sup> Box UL: 300 V / 10 A / AWG 28 - AWG 16
<a href="#">1899520000</a> BCZ 3.81/15/180 SN BK BX	PCB plug-in connector, female plug, 3.81 mm, No. of poles: 15, 180°, Clamping yoke connection, Clamping range, rated connection, max.: 1.5 mm <sup>2</sup> , Box	4032248519422 50 pc(s).	IEC: 320 V / 17.5 A / 0.2 - 1.5 mm <sup>2</sup> Box UL: 300 V / 10 A / AWG 28 - AWG 16

**BC/SC 3.81 series**  
**SC 3.81/02/180G 3.2SN OR BX**

**Weidmüller Interface GmbH & Co. KG**  
 Klingenbergstraße 16  
 D-32758 Detmold  
 Germany  
 Fon: +49 5231 14-0  
 Fax: +49 5231 14-292083  
 www.weidmueller.com

**Mating connector (fully pluggable)**

<a href="#">1792820000</a> BCZ 3.81/08/180 SN BK BX	PCB plug-in connector, female plug, 3.81 mm, No. of poles: 8, 180°, Clamping yoke connection, Clamping range, rated connection, max.: 1.5 mm <sup>2</sup> , Box	4032248226801 50 pc(s).	IEC: 320 V / 17.5 A / 0.2 - 1.5 mm <sup>2</sup> Box UL: 300 V / 10 A / AWG 28 - AWG 16
<a href="#">1792810000</a> BCZ 3.81/06/180 SN BK BX	PCB plug-in connector, female plug, 3.81 mm, No. of poles: 6, 180°, Clamping yoke connection, Clamping range, rated connection, max.: 1.5 mm <sup>2</sup> , Box	4032248226795 50 pc(s).	IEC: 320 V / 17.5 A / 0.2 - 1.5 mm <sup>2</sup> Box UL: 300 V / 10 A / AWG 28 - AWG 16
<a href="#">1940780000</a> BCZ 3.81/07/180 SN OR BX	PCB plug-in connector, female plug, 3.81 mm, No. of poles: 7, 180°, Clamping yoke connection, Clamping range, rated connection, max.: 1.5 mm <sup>2</sup> , Box	4032248656059 50 pc(s).	IEC: 320 V / 17.5 A / 0.2 - 1.5 mm <sup>2</sup> Box UL: 300 V / 10 A / AWG 28 - AWG 16
<a href="#">1792770000</a> BCZ 3.81/02/180 SN BK BX	PCB plug-in connector, female plug, 3.81 mm, No. of poles: 2, 180°, Clamping yoke connection, Clamping range, rated connection, max.: 1.5 mm <sup>2</sup> , Box	4032248226757 50 pc(s).	IEC: 320 V / 17.5 A / 0.2 - 1.5 mm <sup>2</sup> Box UL: 300 V / 10 A / AWG 28 - AWG 16
<a href="#">1792790000</a> BCZ 3.81/04/180 SN BK BX	PCB plug-in connector, female plug, 3.81 mm, No. of poles: 4, 180°, Clamping yoke connection, Clamping range, rated connection, max.: 1.5 mm <sup>2</sup> , Box	4032248226771 50 pc(s).	IEC: 320 V / 17.5 A / 0.2 - 1.5 mm <sup>2</sup> Box UL: 300 V / 10 A / AWG 28 - AWG 16
<a href="#">1940980000</a> BCZ 3.81/18/180 SN BK BX	PCB plug-in connector, female plug, 3.81 mm, No. of poles: 18, 180°, Clamping yoke connection, Clamping range, rated connection, max.: 1.5 mm <sup>2</sup> , Box	4032248655861 50 pc(s).	IEC: 320 V / 17.5 A / 0.2 - 1.5 mm <sup>2</sup> Box UL: 300 V / 10 A / AWG 28 - AWG 16
<a href="#">1940770000</a> BCZ 3.81/06/180 SN OR BX	PCB plug-in connector, female plug, 3.81 mm, No. of poles: 6, 180°, Clamping yoke connection, Clamping range, rated connection, max.: 1.5 mm <sup>2</sup> , Box	4032248656066 50 pc(s).	IEC: 320 V / 17.5 A / 0.2 - 1.5 mm <sup>2</sup> Box UL: 300 V / 10 A / AWG 28 - AWG 16
<a href="#">1827040000</a> BCZ 3.81/06/180 SN GN BX PRT	PCB plug-in connector, female plug, 3.81 mm, No. of poles: 6, 180°, Clamping yoke connection, Clamping range, rated connection, max.: 1.5 mm <sup>2</sup> , Box	4032248331970 150 pc(s).	IEC: 320 V / 17.5 A / 0.2 - 1.5 mm <sup>2</sup> Box UL: 300 V / 10 A / AWG 28 - AWG 16
<a href="#">1899510000</a> BCZ 3.81/15/180 SN GN BX	PCB plug-in connector, female plug, 3.81 mm, No. of poles: 15, 180°, Clamping yoke connection, Clamping range, rated connection, max.: 1.5 mm <sup>2</sup> , Box	4032248519415 50 pc(s).	IEC: 320 V / 17.5 A / 0.2 - 1.5 mm <sup>2</sup> Box UL: 300 V / 10 A / AWG 28 - AWG 16

**BC/SC 3.81 series**  
**SC 3.81/02/180G 3.2SN OR BX**
**Weidmüller Interface GmbH & Co. KG**  
 Klängenbergstraße 16  
 D-32758 Detmold  
 Germany  
 Fon: +49 5231 14-0  
 Fax: +49 5231 14-292083  
 www.weidmueller.com

**Mating connector (fully pluggable)**

		connection, max.: 1.5 mm <sup>2</sup> , Box	
<a href="#">1871380000</a> BCZ 3.81/09/180 SN GN BX	PCB plug-in connector, female plug, 3.81 mm, No. of poles: 9, 180°, Clamping yoke connection, Clamping range, rated connection, max.: 1.5 mm <sup>2</sup> , Box	4032248449989 50 pc(s).	IEC: 320 V / 17.5 A / 0.2 - 1.5 mm <sup>2</sup> Box UL: 300 V / 10 A / AWG 28 - AWG 16
<a href="#">1021630000</a> BCZ 3.81/08/180 SN TGY BX SO	PCB plug-in connector, female plug, 3.81 mm, No. of poles: 8, 180°, Clamping yoke connection, Clamping range, rated connection, max.: 1.5 mm <sup>2</sup> , Box	4032248775927 50 pc(s).	IEC: 320 V / 17.5 A / 0.2 - 1.5 mm <sup>2</sup> Box UL: 300 V / 10 A / AWG 28 - AWG 16
<a href="#">1142050000</a> BCZ 3.81/05/180 SN GN BX PRT	PCB plug-in connector, female plug, 3.81 mm, No. of poles: 5, 180°, Clamping yoke connection, Clamping range, rated connection, max.: 1.5 mm <sup>2</sup> , Box	4032248924943 50 pc(s).	IEC: 320 V / 17.5 A / 0.2 - 1.5 mm <sup>2</sup> Box UL: 300 V / 10 A / AWG 28 - AWG 16
<a href="#">1792800000</a> BCZ 3.81/05/180 SN BK BX	PCB plug-in connector, female plug, 3.81 mm, No. of poles: 5, 180°, Clamping yoke connection, Clamping range, rated connection, max.: 1.5 mm <sup>2</sup> , Box	4032248226788 50 pc(s).	IEC: 320 V / 17.5 A / 0.2 - 1.5 mm <sup>2</sup> Box UL: 300 V / 10 A / AWG 28 - AWG 16
<a href="#">1940830000</a> BCZ 3.81/12/180 SN OR BX	PCB plug-in connector, female plug, 3.81 mm, No. of poles: 12, 180°, Clamping yoke connection, Clamping range, rated connection, max.: 1.5 mm <sup>2</sup> , Box	4032248656004 50 pc(s).	IEC: 320 V / 17.5 A / 0.2 - 1.5 mm <sup>2</sup> Box UL: 300 V / 10 A / AWG 28 - AWG 16
<a href="#">1940750000</a> BCZ 3.81/04/180 SN OR BX	PCB plug-in connector, female plug, 3.81 mm, No. of poles: 4, 180°, Clamping yoke connection, Clamping range, rated connection, max.: 1.5 mm <sup>2</sup> , Box	4032248656080 50 pc(s).	IEC: 320 V / 17.5 A / 0.2 - 1.5 mm <sup>2</sup> Box UL: 300 V / 10 A / AWG 28 - AWG 16
<a href="#">1940910000</a> BCZ 3.81/19/180 SN OR BX	PCB plug-in connector, female plug, 3.81 mm, No. of poles: 19, 180°, Clamping yoke connection, Clamping range, rated connection, max.: 1.5 mm <sup>2</sup> , Box	4032248655939 50 pc(s).	IEC: 320 V / 17.5 A / 0.2 - 1.5 mm <sup>2</sup> Box UL: 300 V / 10 A / AWG 28 - AWG 16
<a href="#">1941000000</a> BCZ 3.81/20/180 SN BK BX	PCB plug-in connector, female plug, 3.81 mm, No. of poles: 20, 180°, Clamping yoke connection, Clamping range, rated connection, max.: 1.5 mm <sup>2</sup> , Box	4032248655847 50 pc(s).	IEC: 320 V / 17.5 A / 0.2 - 1.5 mm <sup>2</sup> Box UL: 300 V / 10 A / AWG 28 - AWG 16
<a href="#">1792840000</a> BCZ 3.81/12/180 SN BK BX	PCB plug-in connector, female plug, 3.81 mm,	4032248226924 50 pc(s).	IEC: 320 V / 17.5 A / 0.2 - 1.5 mm <sup>2</sup> Box UL: 300 V / 10 A / AWG 28 - AWG 16

Creation date February 20, 2013 9:11:21 PM CET

**BC/SC 3.81 series**  
**SC 3.81/02/180G 3.2SN OR BX**

**Weidmüller Interface GmbH & Co. KG**  
 Klingenbergstraße 16  
 D-32758 Detmold  
 Germany  
 Fon: +49 5231 14-0  
 Fax: +49 5231 14-292083  
 www.weidmueller.com

**Mating connector (fully pluggable)**

No. of poles: 12, 180°,  
 Clamping yoke connection,  
 Clamping range, rated  
 connection, max.: 1.5 mm<sup>2</sup>,  
 Box

<a href="#">1848130000</a> BCZ 3.81/08/180 SN GN BX PRT	PCB plug-in connector, female plug, 3.81 mm, No. of poles: 8, 180°, Clamping yoke connection, Clamping range, rated connection, max.: 1.5 mm <sup>2</sup> , Box	4032248369416 100 pc(s).	IEC: 320 V / 17.5 A / 0.2 - 1.5 mm <sup>2</sup> UL: 300 V / 10 A / AWG 28 - AWG 16	Box
<a href="#">1792940000</a> BCZ 3.81/16/180 SN GN BX	PCB plug-in connector, female plug, 3.81 mm, No. of poles: 16, 180°, Clamping yoke connection, Clamping range, rated connection, max.: 1.5 mm <sup>2</sup> , Box	4032248227020 50 pc(s).	IEC: 320 V / 17.5 A / 0.2 - 1.5 mm <sup>2</sup> UL: 300 V / 10 A / AWG 28 - AWG 16	Box
<a href="#">1940930000</a> BCZ 3.81/17/180 SN GN BX	PCB plug-in connector, female plug, 3.81 mm, No. of poles: 17, 180°, Clamping yoke connection, Clamping range, rated connection, max.: 1.5 mm <sup>2</sup> , Box	4032248655915 50 pc(s).	IEC: 320 V / 17.5 A / 0.2 - 1.5 mm <sup>2</sup> UL: 300 V / 10 A / AWG 28 - AWG 16	Box
<a href="#">1940920000</a> BCZ 3.81/20/180 SN OR BX	PCB plug-in connector, female plug, 3.81 mm, No. of poles: 20, 180°, Clamping yoke connection, Clamping range, rated connection, max.: 1.5 mm <sup>2</sup> , Box	4032248655922 50 pc(s).	IEC: 320 V / 17.5 A / 0.2 - 1.5 mm <sup>2</sup> UL: 300 V / 10 A / AWG 28 - AWG 16	Box
<a href="#">1940740000</a> BCZ 3.81/03/180 SN OR BX	PCB plug-in connector, female plug, 3.81 mm, No. of poles: 3, 180°, Clamping yoke connection, Clamping range, rated connection, max.: 1.5 mm <sup>2</sup> , Box	4032248656097 50 pc(s).	IEC: 320 V / 17.5 A / 0.2 - 1.5 mm <sup>2</sup> UL: 300 V / 10 A / AWG 28 - AWG 16	Box
<a href="#">1807320000</a> BCZ 3.81/14/180 SN GN BX PRT	PCB plug-in connector, female plug, 3.81 mm, No. of poles: 14, 180°, Clamping yoke connection, Clamping range, rated connection, max.: 1.5 mm <sup>2</sup> , Box	4032248278534 50 pc(s).	IEC: 320 V / 17.5 A / 0.2 - 1.5 mm <sup>2</sup> UL: 300 V / 10 A / AWG 28 - AWG 16	Box
<a href="#">1940940000</a> BCZ 3.81/18/180 SN GN BX	PCB plug-in connector, female plug, 3.81 mm, No. of poles: 18, 180°, Clamping yoke connection, Clamping range, rated connection, max.: 1.5 mm <sup>2</sup> , Box	4032248655908 50 pc(s).	IEC: 320 V / 17.5 A / 0.2 - 1.5 mm <sup>2</sup> UL: 300 V / 10 A / AWG 28 - AWG 16	Box
<a href="#">1142060000</a> BCZ 3.81/08/180 SN GN BX PRT	PCB plug-in connector, female plug, 3.81 mm, No. of poles: 8, 180°, Clamping	4032248924882 50 pc(s).	IEC: 320 V / 17.5 A / 0.2 - 1.5 mm <sup>2</sup> UL: 300 V / 10 A / AWG 28 - AWG 16	Box

Creation date February 20, 2013 9:11:21 PM CET

**BC/SC 3.81 series**  
**SC 3.81/02/180G 3.2SN OR BX**

**Weidmüller Interface GmbH & Co. KG**  
 Klingenbergstraße 16  
 D-32758 Detmold  
 Germany  
 Fon: +49 5231 14-0  
 Fax: +49 5231 14-292083  
 www.weidmueller.com

**Mating connector (fully pluggable)**

	yokey connection, Clamping range, rated connection, max.: 1.5 mm <sup>2</sup> , Box		
<a href="#">1940960000</a> BCZ 3.81/20/180 SN GN BX	PCB plug-in connector, female plug, 3.81 mm, No. of poles: 20, 180°, Clamping yoke connection, Clamping range, rated connection, max.: 1.5 mm <sup>2</sup> , Box	4032248655885 50 pc(s).	IEC: 320 V / 17.5 A / 0.2 - 1.5 mm <sup>2</sup> Box UL: 300 V / 10 A / AWG 28 - AWG 16
<a href="#">1940810000</a> BCZ 3.81/10/180 SN OR BX	PCB plug-in connector, female plug, 3.81 mm, No. of poles: 10, 180°, Clamping yoke connection, Clamping range, rated connection, max.: 1.5 mm <sup>2</sup> , Box	4032248656028 50 pc(s).	IEC: 320 V / 17.5 A / 0.2 - 1.5 mm <sup>2</sup> Box UL: 300 V / 10 A / AWG 28 - AWG 16
<a href="#">1940850000</a> BCZ 3.81/14/180 SN OR BX	PCB plug-in connector, female plug, 3.81 mm, No. of poles: 14, 180°, Clamping yoke connection, Clamping range, rated connection, max.: 1.5 mm <sup>2</sup> , Box	4032248655984 50 pc(s).	IEC: 320 V / 17.5 A / 0.2 - 1.5 mm <sup>2</sup> Box UL: 300 V / 10 A / AWG 28 - AWG 16
<a href="#">1827050000</a> BCZ 3.81/06/180 SN GN BX PRT	PCB plug-in connector, female plug, 3.81 mm, No. of poles: 6, 180°, Clamping yoke connection, Clamping range, rated connection, max.: 1.5 mm <sup>2</sup> , Box	4032248331987 150 pc(s).	IEC: 320 V / 17.5 A / 0.2 - 1.5 mm <sup>2</sup> Box UL: 300 V / 10 A / AWG 28 - AWG 16
<a href="#">1792910000</a> BCZ 3.81/08/180 SN GN BX	PCB plug-in connector, female plug, 3.81 mm, No. of poles: 8, 180°, Clamping yoke connection, Clamping range, rated connection, max.: 1.5 mm <sup>2</sup> , Box	4032248226993 50 pc(s).	IEC: 320 V / 17.5 A / 0.2 - 1.5 mm <sup>2</sup> Box UL: 300 V / 10 A / AWG 28 - AWG 16
<a href="#">1940870000</a> BCZ 3.81/16/180 SN OR BX	PCB plug-in connector, female plug, 3.81 mm, No. of poles: 16, 180°, Clamping yoke connection, Clamping range, rated connection, max.: 1.5 mm <sup>2</sup> , Box	4032248655960 50 pc(s).	IEC: 320 V / 17.5 A / 0.2 - 1.5 mm <sup>2</sup> Box UL: 300 V / 10 A / AWG 28 - AWG 16
<a href="#">1045720000</a> BCZ 3.81/04/180 SN OR BX PRT	PCB plug-in connector, female plug, 3.81 mm, No. of poles: 4, 180°, Clamping yoke connection, Clamping range, rated connection, max.: 1.5 mm <sup>2</sup> , Box	4032248779550 50 pc(s).	IEC: 320 V / 17.5 A / 0.2 - 1.5 mm <sup>2</sup> Box UL: 300 V / 10 A / AWG 28 - AWG 16
<a href="#">1848120000</a> BCZ 3.81/06/180 SN GN BX PRT	PCB plug-in connector, female plug, 3.81 mm, No. of poles: 6, 180°, Clamping yoke connection, Clamping range, rated connection, max.: 1.5 mm <sup>2</sup> , Box	4032248369102 150 pc(s).	IEC: 320 V / 17.5 A / 0.2 - 1.5 mm <sup>2</sup> Box UL: 300 V / 10 A / AWG 28 - AWG 16



**BC/SC 3.81 series**  
**SC 3.81/02/180G 3.2SN OR BX**

**Weidmüller Interface GmbH & Co. KG**  
 Klingenbergstraße 16  
 D-32758 Detmold  
 Germany  
 Fon: +49 5231 14-0  
 Fax: +49 5231 14-292083  
 www.weidmueller.com

**Mating connector (fully pluggable)**

<a href="#">1859170000</a> BCZ 3.81/04/180 SN GN BX PRT	PCB plug-in connector, female plug, 3.81 mm, No. of poles: 4, 180°, Clamping yoke connection, Clamping range, rated connection, max.: 1.5 mm <sup>2</sup> , Box	4032248411610 180 pc(s).	IEC: 320 V / 17.5 A / 0.2 - 1.5 mm <sup>2</sup> Box UL: 300 V / 10 A / AWG 28 - AWG 16
<a href="#">1871410000</a> BCZ 3.81/07/180 SN BK BX	PCB plug-in connector, female plug, 3.81 mm, No. of poles: 7, 180°, Clamping yoke connection, Clamping range, rated connection, max.: 1.5 mm <sup>2</sup> , Box	4032248450213 50 pc(s).	IEC: 320 V / 17.5 A / 0.2 - 1.5 mm <sup>2</sup> Box UL: 300 V / 10 A / AWG 28 - AWG 16
<a href="#">1807300000</a> BCZ 3.81/06/180 SN GN BX PRT	PCB plug-in connector, female plug, 3.81 mm, No. of poles: 6, 180°, Clamping yoke connection, Clamping range, rated connection, max.: 1.5 mm <sup>2</sup> , Box	4032248278510 50 pc(s).	IEC: 320 V / 17.5 A / 0.2 - 1.5 mm <sup>2</sup> Box UL: 300 V / 10 A / AWG 28 - AWG 16
<a href="#">1940760000</a> BCZ 3.81/05/180 SN OR BX	PCB plug-in connector, female plug, 3.81 mm, No. of poles: 5, 180°, Clamping yoke connection, Clamping range, rated connection, max.: 1.5 mm <sup>2</sup> , Box	4032248656073 50 pc(s).	IEC: 320 V / 17.5 A / 0.2 - 1.5 mm <sup>2</sup> Box UL: 300 V / 10 A / AWG 28 - AWG 16
<a href="#">1871390000</a> BCZ 3.81/09/180 SN BK BX	PCB plug-in connector, female plug, 3.81 mm, No. of poles: 9, 180°, Clamping yoke connection, Clamping range, rated connection, max.: 1.5 mm <sup>2</sup> , Box	4032248449996 50 pc(s).	IEC: 320 V / 17.5 A / 0.2 - 1.5 mm <sup>2</sup> Box UL: 300 V / 10 A / AWG 28 - AWG 16
<a href="#">1827060000</a> BCZ 3.81/08/180 SN GN BX PRT	PCB plug-in connector, female plug, 3.81 mm, No. of poles: 8, 180°, Clamping yoke connection, Clamping range, rated connection, max.: 1.5 mm <sup>2</sup> , Box	4032248331994 100 pc(s).	IEC: 320 V / 17.5 A / 0.2 - 1.5 mm <sup>2</sup> Box UL: 300 V / 10 A / AWG 28 - AWG 16
<a href="#">1807270000</a> BCZ 3.81/04/180 SN GN BX PRT	PCB plug-in connector, female plug, 3.81 mm, No. of poles: 4, 180°, Clamping yoke connection, Clamping range, rated connection, max.: 1.5 mm <sup>2</sup> , Box	4032248278282 180 pc(s).	IEC: 320 V / 17.5 A / 0.2 - 1.5 mm <sup>2</sup> Box UL: 300 V / 10 A / AWG 28 - AWG 16
<a href="#">1792850000</a> BCZ 3.81/16/180 SN BK BX	PCB plug-in connector, female plug, 3.81 mm, No. of poles: 16, 180°, Clamping yoke connection, Clamping range, rated connection, max.: 1.5 mm <sup>2</sup> , Box	4032248226931 50 pc(s).	IEC: 320 V / 17.5 A / 0.2 - 1.5 mm <sup>2</sup> Box UL: 300 V / 10 A / AWG 28 - AWG 16
<a href="#">1827030000</a> BCZ 3.81/04/180 SN GN BX PRT	PCB plug-in connector, female plug, 3.81 mm, No. of poles: 4, 180°, Clamping yoke connection, Clamping range, rated connection, max.: 1.5 mm <sup>2</sup> , Box	4032248331963 180 pc(s).	IEC: 320 V / 17.5 A / 0.2 - 1.5 mm <sup>2</sup> Box UL: 300 V / 10 A / AWG 28 - AWG 16

Creation date February 20, 2013 9:11:21 PM CET

**BC/SC 3.81 series**  
**SC 3.81/02/180G 3.2SN OR BX**

**Weidmüller Interface GmbH & Co. KG**  
 Klingenbergstraße 16  
 D-32758 Detmold  
 Germany  
 Fon: +49 5231 14-0  
 Fax: +49 5231 14-292083  
 www.weidmueller.com

**Mating connector (fully pluggable)**

<a href="#">1792880000</a> BCZ 3.81/04/180 SN GN BX	PCB plug-in connector, female plug, 3.81 mm, No. of poles: 4, 180°, Clamping yoke connection, Clamping range, rated connection, max.: 1.5 mm <sup>2</sup> , Box	4032248226962 50 pc(s).	IEC: 320 V / 17.5 A / 0.2 - 1.5 mm <sup>2</sup> Box UL: 300 V / 10 A / AWG 28 - AWG 16
<a href="#">1899440000</a> BCZ 3.81/13/180 SN BK BX	PCB plug-in connector, female plug, 3.81 mm, No. of poles: 13, 180°, Clamping yoke connection, Clamping range, rated connection, max.: 1.5 mm <sup>2</sup> , Box	4032248519347 50 pc(s).	IEC: 320 V / 17.5 A / 0.2 - 1.5 mm <sup>2</sup> Box UL: 300 V / 10 A / AWG 28 - AWG 16
<a href="#">1940840000</a> BCZ 3.81/13/180 SN OR BX	PCB plug-in connector, female plug, 3.81 mm, No. of poles: 13, 180°, Clamping yoke connection, Clamping range, rated connection, max.: 1.5 mm <sup>2</sup> , Box	4032248655991 50 pc(s).	IEC: 320 V / 17.5 A / 0.2 - 1.5 mm <sup>2</sup> Box UL: 300 V / 10 A / AWG 28 - AWG 16
<a href="#">1899480000</a> BCZ 3.81/14/180 SN BK BX	PCB plug-in connector, female plug, 3.81 mm, No. of poles: 14, 180°, Clamping yoke connection, Clamping range, rated connection, max.: 1.5 mm <sup>2</sup> , Box	4032248519385 50 pc(s).	IEC: 320 V / 17.5 A / 0.2 - 1.5 mm <sup>2</sup> Box UL: 300 V / 10 A / AWG 28 - AWG 16
<a href="#">1899430000</a> BCZ 3.81/13/180 SN GN BX	PCB plug-in connector, female plug, 3.81 mm, No. of poles: 13, 180°, Clamping yoke connection, Clamping range, rated connection, max.: 1.5 mm <sup>2</sup> , Box	4032248519330 50 pc(s).	IEC: 320 V / 17.5 A / 0.2 - 1.5 mm <sup>2</sup> Box UL: 300 V / 10 A / AWG 28 - AWG 16
<a href="#">1021640000</a> BCZ 3.81/08/180 SN TGY BX SO	PCB plug-in connector, female plug, 3.81 mm, No. of poles: 8, 180°, Clamping yoke connection, Clamping range, rated connection, max.: 1.5 mm <sup>2</sup> , Box	4032248775910 50 pc(s).	IEC: 320 V / 17.5 A / 0.2 - 1.5 mm <sup>2</sup> Box UL: 300 V / 10 A / AWG 28 - AWG 16
<a href="#">1899470000</a> BCZ 3.81/14/180 SN GN BX	PCB plug-in connector, female plug, 3.81 mm, No. of poles: 14, 180°, Clamping yoke connection, Clamping range, rated connection, max.: 1.5 mm <sup>2</sup> , Box	4032248519378 50 pc(s).	IEC: 320 V / 17.5 A / 0.2 - 1.5 mm <sup>2</sup> Box UL: 300 V / 10 A / AWG 28 - AWG 16
<a href="#">1940950000</a> BCZ 3.81/19/180 SN GN BX	PCB plug-in connector, female plug, 3.81 mm, No. of poles: 19, 180°, Clamping yoke connection, Clamping range, rated connection, max.: 1.5 mm <sup>2</sup> , Box	4032248655892 50 pc(s).	IEC: 320 V / 17.5 A / 0.2 - 1.5 mm <sup>2</sup> Box UL: 300 V / 10 A / AWG 28 - AWG 16

**BC/SC 3.81 series**  
**SC 3.81/02/180G 3.2SN OR BX**

**Weidmüller Interface GmbH & Co. KG**  
 Klingenbergstraße 16  
 D-32758 Detmold  
 Germany  
 Fon: +49 5231 14-0  
 Fax: +49 5231 14-292083  
 www.weidmueller.com

**Mating connector (fully pluggable)**

<a href="#">179290000</a> BCZ 3.81/06/180 SN GN BX	PCB plug-in connector, female plug, 3.81 mm, No. of poles: 6, 180°, Clamping yoke connection, Clamping range, rated connection, max.: 1.5 mm <sup>2</sup> , Box	4032248226986 50 pc(s).	IEC: 320 V / 17.5 A / 0.2 - 1.5 mm <sup>2</sup> Box UL: 300 V / 10 A / AWG 28 - AWG 16
<a href="#">196564000</a> BCZ 3.81/05/180 SN BK BX PRT	PCB plug-in connector, female plug, 3.81 mm, No. of poles: 5, 180°, Clamping yoke connection, Clamping range, rated connection, max.: 1.5 mm <sup>2</sup> , Box	4032248653515 50 pc(s).	IEC: 320 V / 17.5 A / 0.2 - 1.5 mm <sup>2</sup> Box UL: 300 V / 10 A / AWG 28 - AWG 16
<a href="#">194099000</a> BCZ 3.81/19/180 SN BK BX	PCB plug-in connector, female plug, 3.81 mm, No. of poles: 19, 180°, Clamping yoke connection, Clamping range, rated connection, max.: 1.5 mm <sup>2</sup> , Box	4032248655854 50 pc(s).	IEC: 320 V / 17.5 A / 0.2 - 1.5 mm <sup>2</sup> Box UL: 300 V / 10 A / AWG 28 - AWG 16
<a href="#">179286000</a> BCZ 3.81/02/180 SN GN BX	PCB plug-in connector, female plug, 3.81 mm, No. of poles: 2, 180°, Clamping yoke connection, Clamping range, rated connection, max.: 1.5 mm <sup>2</sup> , Box	4032248226948 50 pc(s).	IEC: 320 V / 17.5 A / 0.2 - 1.5 mm <sup>2</sup> Box UL: 300 V / 10 A / AWG 28 - AWG 16
<a href="#">187140000</a> BCZ 3.81/07/180 SN GN BX	PCB plug-in connector, female plug, 3.81 mm, No. of poles: 7, 180°, Clamping yoke connection, Clamping range, rated connection, max.: 1.5 mm <sup>2</sup> , Box	4032248450008 50 pc(s).	IEC: 320 V / 17.5 A / 0.2 - 1.5 mm <sup>2</sup> Box UL: 300 V / 10 A / AWG 28 - AWG 16
<a href="#">184811000</a> BCZ 3.81/06/180 SN GN BX PRT	PCB plug-in connector, female plug, 3.81 mm, No. of poles: 6, 180°, Clamping yoke connection, Clamping range, rated connection, max.: 1.5 mm <sup>2</sup> , Box	4032248369096 150 pc(s).	IEC: 320 V / 17.5 A / 0.2 - 1.5 mm <sup>2</sup> Box UL: 300 V / 10 A / AWG 28 - AWG 16
<a href="#">194079000</a> BCZ 3.81/08/180 SN OR BX	PCB plug-in connector, female plug, 3.81 mm, No. of poles: 8, 180°, Clamping yoke connection, Clamping range, rated connection, max.: 1.5 mm <sup>2</sup> , Box	4032248656042 50 pc(s).	IEC: 320 V / 17.5 A / 0.2 - 1.5 mm <sup>2</sup> Box UL: 300 V / 10 A / AWG 28 - AWG 16
<a href="#">179293000</a> BCZ 3.81/12/180 SN GN BX	PCB plug-in connector, female plug, 3.81 mm, No. of poles: 12, 180°, Clamping yoke connection, Clamping range, rated connection, max.: 1.5 mm <sup>2</sup> , Box	4032248227013 50 pc(s).	IEC: 320 V / 17.5 A / 0.2 - 1.5 mm <sup>2</sup> Box UL: 300 V / 10 A / AWG 28 - AWG 16
<a href="#">179278000</a> BCZ 3.81/03/180 SN BK BX	PCB plug-in connector, female plug, 3.81 mm, No. of poles: 3, 180°, Clamping yoke connection, Clamping	4032248226764 50 pc(s).	IEC: 320 V / 17.5 A / 0.2 - 1.5 mm <sup>2</sup> Box UL: 300 V / 10 A / AWG 28 - AWG 16

**BC/SC 3.81 series  
SC 3.81/02/180G 3.2SN OR BX**

**Weidmüller Interface GmbH & Co. KG**  
 Klingenbergstraße 16  
 D-32758 Detmold  
 Germany  
 Fon: +49 5231 14-0  
 Fax: +49 5231 14-292083  
 www.weidmueller.com

**Mating connector (fully pluggable)**

	range, rated connection, max.: 1.5 mm <sup>2</sup> , Box		
<a href="#">1940970000</a> BCZ 3.81/17/180 SN BK BX	PCB plug-in connector, female plug, 3.81 mm, No. of poles: 17, 180°, Clamping yoke connection, Clamping range, rated connection, max.: 1.5 mm <sup>2</sup> , Box	4032248655878 50 pc(s).	IEC: 320 V / 17.5 A / 0.2 - 1.5 mm <sup>2</sup> Box UL: 300 V / 10 A / AWG 28 - AWG 16
<a href="#">1880200000</a> BCZ 3.81/03/180 SN GN BX PRT	PCB plug-in connector, female plug, 3.81 mm, No. of poles: 3, 180°, Clamping yoke connection, Clamping range, rated connection, max.: 1.5 mm <sup>2</sup> , Box	4032248479177 200 pc(s).	IEC: 320 V / 17.5 A / 0.2 - 1.5 mm <sup>2</sup> Box UL: 300 V / 10 A / AWG 28 - AWG 16
<a href="#">1094950000</a> BCZ 3.81/04/180 SN OR BX PRT	PCB plug-in connector, female plug, 3.81 mm, No. of poles: 4, 180°, Clamping yoke connection, Clamping range, rated connection, max.: 1.5 mm <sup>2</sup> , Box	4032248867738 50 pc(s).	IEC: 320 V / 17.5 A / 0.2 - 1.5 mm <sup>2</sup> Box UL: 300 V / 10 A / AWG 28 - AWG 16

**BCZ 3.81/270**


Female socket connectors with clamping-yoke screw system for connecting wires.

Three wire-outlet directions are available and provide flexible connection-level design options:

- 180° wire parallel to plugging direction
- 90° wire perpendicular and above plugging direction
- 270° wire perpendicular and below plugging direction

There are three housing shapes, covering many different requirements, to choose from:

- Standard housing without flange
- Flange with screw (F)
- Flange featuring Weidmüller's patented release latch (LR) for lock-and-release latching with no strain and no tools needed.

Weidmüller's 3.81-mm-pitch (0.15 inch) plug-in connectors are compatible with the layouts of customary connectors and offer space for labelling and coding.

- 0.20 - 1.5 mm<sup>2</sup> (IEC) / 28 - 16 AWG (UL)
- 250 V (IEC) / 300 V (UL)
- 17.5 A (IEC) / 10 A (UL)

**General ordering data**

Order No.	Type	Version	GTIN (EAN)	Qty.	Product data	Packaging
<a href="#">1940310000</a>	BCZ 3.81/14/270 SN OR BX	PCB plug-in connector, female plug, 3.81 mm, No. of poles: 14, 270°, Clamping yoke connection, Clamping range, rated	4032248656523	50 pc(s).	IEC: 320 V / 17.5 A / 0.2 - 1.5 mm <sup>2</sup> UL: 300 V / 10 A / AWG 28 - AWG 16	Box

**BC/SC 3.81 series**  
**SC 3.81/02/180G 3.2SN OR BX**

**Weidmüller Interface GmbH & Co. KG**  
 Klingenbergstraße 16  
 D-32758 Detmold  
 Germany  
 Fon: +49 5231 14-0  
 Fax: +49 5231 14-292083  
 www.weidmueller.com

**Mating connector (fully pluggable)**

	connection, max.: 1.5 mm <sup>2</sup> , Box		
<a href="#">1799040000</a> BCZ 3.81/05/270 SN GN BX	PCB plug-in connector, female plug, 3.81 mm, No. of poles: 5, 270°, Clamping yoke connection, Clamping range, rated connection, max.: 1.5 mm <sup>2</sup> , Box	4032248243938 50 pc(s).	IEC: 320 V / 17.5 A / 0.2 - 1.5 mm <sup>2</sup> Box UL: 300 V / 10 A / AWG 28 - AWG 16
<a href="#">1940220000</a> BCZ 3.81/05/270 SN OR BX	PCB plug-in connector, female plug, 3.81 mm, No. of poles: 5, 270°, Clamping yoke connection, Clamping range, rated connection, max.: 1.5 mm <sup>2</sup> , Box	4032248656615 50 pc(s).	IEC: 320 V / 17.5 A / 0.2 - 1.5 mm <sup>2</sup> Box UL: 300 V / 10 A / AWG 28 - AWG 16
<a href="#">1799030000</a> BCZ 3.81/04/270 SN GN BX	PCB plug-in connector, female plug, 3.81 mm, No. of poles: 4, 270°, Clamping yoke connection, Clamping range, rated connection, max.: 1.5 mm <sup>2</sup> , Box	4032248243921 50 pc(s).	IEC: 320 V / 17.5 A / 0.2 - 1.5 mm <sup>2</sup> Box UL: 300 V / 10 A / AWG 28 - AWG 16
<a href="#">1798960000</a> BCZ 3.81/05/270 SN BK BX	PCB plug-in connector, female plug, 3.81 mm, No. of poles: 5, 270°, Clamping yoke connection, Clamping range, rated connection, max.: 1.5 mm <sup>2</sup> , Box	4032248243747 50 pc(s).	IEC: 320 V / 17.5 A / 0.2 - 1.5 mm <sup>2</sup> Box UL: 300 V / 10 A / AWG 28 - AWG 16
<a href="#">1799010000</a> BCZ 3.81/02/270 SN GN BX	PCB plug-in connector, female plug, 3.81 mm, No. of poles: 2, 270°, Clamping yoke connection, Clamping range, rated connection, max.: 1.5 mm <sup>2</sup> , Box	4032248243808 50 pc(s).	IEC: 320 V / 17.5 A / 0.2 - 1.5 mm <sup>2</sup> Box UL: 300 V / 10 A / AWG 28 - AWG 16
<a href="#">1798160000</a> BCZ 3.81/03/270 SN BK BX	PCB plug-in connector, female plug, 3.81 mm, No. of poles: 3, 270°, Clamping yoke connection, Clamping range, rated connection, max.: 1.5 mm <sup>2</sup> , Box	4032248241354 50 pc(s).	IEC: 320 V / 17.5 A / 0.2 - 1.5 mm <sup>2</sup> Box UL: 300 V / 10 A / AWG 28 - AWG 16
<a href="#">1940270000</a> BCZ 3.81/10/270 SN OR BX	PCB plug-in connector, female plug, 3.81 mm, No. of poles: 10, 270°, Clamping yoke connection, Clamping range, rated connection, max.: 1.5 mm <sup>2</sup> , Box	4032248656561 50 pc(s).	IEC: 320 V / 17.5 A / 0.2 - 1.5 mm <sup>2</sup> Box UL: 300 V / 10 A / AWG 28 - AWG 16
<a href="#">1940360000</a> BCZ 3.81/11/270 SN GN BX	PCB plug-in connector, female plug, 3.81 mm, No. of poles: 11, 270°, Clamping yoke connection, Clamping range, rated connection, max.: 1.5 mm <sup>2</sup> , Box	4032248656479 50 pc(s).	IEC: 320 V / 17.5 A / 0.2 - 1.5 mm <sup>2</sup> Box UL: 300 V / 10 A / AWG 28 - AWG 16
<a href="#">1940290000</a> BCZ 3.81/12/270 SN OR BX	PCB plug-in connector, female plug, 3.81 mm, No. of poles: 12, 270°,	4032248656547 50 pc(s).	IEC: 320 V / 17.5 A / 0.2 - 1.5 mm <sup>2</sup> Box UL: 300 V / 10 A / AWG 28 - AWG 16

Creation date February 20, 2013 9:11:21 PM CET

**BC/SC 3.81 series**  
**SC 3.81/02/180G 3.2SN OR BX**

**Weidmüller Interface GmbH & Co. KG**  
 Klingenbergstraße 16  
 D-32758 Detmold  
 Germany  
 Fon: +49 5231 14-0  
 Fax: +49 5231 14-292083  
 www.weidmueller.com

**Mating connector (fully pluggable)**

	Clamping yoke connection, Clamping range, rated connection, max.: 1.5 mm <sup>2</sup> , Box		
<a href="#">1799020000</a> BCZ 3.81/03/270 SN GN BX	PCB plug-in connector, female plug, 3.81 mm, No. of poles: 3, 270°, Clamping yoke connection, Clamping range, rated connection, max.: 1.5 mm <sup>2</sup> , Box	4032248243914 50 pc(s).	IEC: 320 V / 17.5 A / 0.2 - 1.5 mm <sup>2</sup> Box UL: 300 V / 10 A / AWG 28 - AWG 16
<a href="#">1940250000</a> BCZ 3.81/08/270 SN OR BX	PCB plug-in connector, female plug, 3.81 mm, No. of poles: 8, 270°, Clamping yoke connection, Clamping range, rated connection, max.: 1.5 mm <sup>2</sup> , Box	4032248656585 50 pc(s).	IEC: 320 V / 17.5 A / 0.2 - 1.5 mm <sup>2</sup> Box UL: 300 V / 10 A / AWG 28 - AWG 16
<a href="#">1940230000</a> BCZ 3.81/06/270 SN OR BX	PCB plug-in connector, female plug, 3.81 mm, No. of poles: 6, 270°, Clamping yoke connection, Clamping range, rated connection, max.: 1.5 mm <sup>2</sup> , Box	4032248656608 50 pc(s).	IEC: 320 V / 17.5 A / 0.2 - 1.5 mm <sup>2</sup> Box UL: 300 V / 10 A / AWG 28 - AWG 16
<a href="#">1940300000</a> BCZ 3.81/13/270 SN OR BX	PCB plug-in connector, female plug, 3.81 mm, No. of poles: 13, 270°, Clamping yoke connection, Clamping range, rated connection, max.: 1.5 mm <sup>2</sup> , Box	4032248656530 50 pc(s).	IEC: 320 V / 17.5 A / 0.2 - 1.5 mm <sup>2</sup> Box UL: 300 V / 10 A / AWG 28 - AWG 16
<a href="#">1940440000</a> BCZ 3.81/14/270 SN BK BX	PCB plug-in connector, female plug, 3.81 mm, No. of poles: 14, 270°, Clamping yoke connection, Clamping range, rated connection, max.: 1.5 mm <sup>2</sup> , Box	4032248656394 50 pc(s).	IEC: 320 V / 17.5 A / 0.2 - 1.5 mm <sup>2</sup> Box UL: 300 V / 10 A / AWG 28 - AWG 16
<a href="#">1940420000</a> BCZ 3.81/11/270 SN BK BX	PCB plug-in connector, female plug, 3.81 mm, No. of poles: 11, 270°, Clamping yoke connection, Clamping range, rated connection, max.: 1.5 mm <sup>2</sup> , Box	4032248656417 50 pc(s).	IEC: 320 V / 17.5 A / 0.2 - 1.5 mm <sup>2</sup> Box UL: 300 V / 10 A / AWG 28 - AWG 16
<a href="#">1798170000</a> BCZ 3.81/08/270 SN BK BX	PCB plug-in connector, female plug, 3.81 mm, No. of poles: 8, 270°, Clamping yoke connection, Clamping range, rated connection, max.: 1.5 mm <sup>2</sup> , Box	4032248241361 50 pc(s).	IEC: 320 V / 17.5 A / 0.2 - 1.5 mm <sup>2</sup> Box UL: 300 V / 10 A / AWG 28 - AWG 16
<a href="#">1798970000</a> BCZ 3.81/06/270 SN BK BX	PCB plug-in connector, female plug, 3.81 mm, No. of poles: 6, 270°, Clamping yoke connection, Clamping range, rated connection, max.: 1.5 mm <sup>2</sup> , Box	4032248243754 50 pc(s).	IEC: 320 V / 17.5 A / 0.2 - 1.5 mm <sup>2</sup> Box UL: 300 V / 10 A / AWG 28 - AWG 16

Creation date February 20, 2013 9:11:21 PM CET

**BC/SC 3.81 series**  
**SC 3.81/02/180G 3.2SN OR BX**

**Weidmüller Interface GmbH & Co. KG**  
 Klängenbergstraße 16  
 D-32758 Detmold  
 Germany  
 Fon: +49 5231 14-0  
 Fax: +49 5231 14-292083  
 www.weidmueller.com

**Mating connector (fully pluggable)**

<a href="#">1940280000</a> BCZ 3.81/11/270 SN OR BX	PCB plug-in connector, female plug, 3.81 mm, No. of poles: 11, 270°, Clamping yoke connection, Clamping range, rated connection, max.: 1.5 mm <sup>2</sup> , Box	4032248656554 50 pc(s).	IEC: 320 V / 17.5 A / 0.2 - 1.5 mm <sup>2</sup> Box UL: 300 V / 10 A / AWG 28 - AWG 16
<a href="#">1940410000</a> BCZ 3.81/09/270 SN BK BX	PCB plug-in connector, female plug, 3.81 mm, No. of poles: 9, 270°, Clamping yoke connection, Clamping range, rated connection, max.: 1.5 mm <sup>2</sup> , Box	4032248656424 50 pc(s).	IEC: 320 V / 17.5 A / 0.2 - 1.5 mm <sup>2</sup> Box UL: 300 V / 10 A / AWG 28 - AWG 16
<a href="#">1799000000</a> BCZ 3.81/16/270 SN BK BX	PCB plug-in connector, female plug, 3.81 mm, No. of poles: 16, 270°, Clamping yoke connection, Clamping range, rated connection, max.: 1.5 mm <sup>2</sup> , Box	4032248243792 50 pc(s).	IEC: 320 V / 17.5 A / 0.2 - 1.5 mm <sup>2</sup> Box UL: 300 V / 10 A / AWG 28 - AWG 16
<a href="#">1940340000</a> BCZ 3.81/07/270 SN GN BX	PCB plug-in connector, female plug, 3.81 mm, No. of poles: 7, 270°, Clamping yoke connection, Clamping range, rated connection, max.: 1.5 mm <sup>2</sup> , Box	4032248656493 50 pc(s).	IEC: 320 V / 17.5 A / 0.2 - 1.5 mm <sup>2</sup> Box UL: 300 V / 10 A / AWG 28 - AWG 16
<a href="#">1940190000</a> BCZ 3.81/02/270 SN OR BX	PCB plug-in connector, female plug, 3.81 mm, No. of poles: 2, 270°, Clamping yoke connection, Clamping range, rated connection, max.: 1.5 mm <sup>2</sup> , Box	4032248656646 50 pc(s).	IEC: 320 V / 17.5 A / 0.2 - 1.5 mm <sup>2</sup> Box UL: 300 V / 10 A / AWG 28 - AWG 16
<a href="#">1940210000</a> BCZ 3.81/04/270 SN OR BX	PCB plug-in connector, female plug, 3.81 mm, No. of poles: 4, 270°, Clamping yoke connection, Clamping range, rated connection, max.: 1.5 mm <sup>2</sup> , Box	4032248656622 50 pc(s).	IEC: 320 V / 17.5 A / 0.2 - 1.5 mm <sup>2</sup> Box UL: 300 V / 10 A / AWG 28 - AWG 16
<a href="#">1940350000</a> BCZ 3.81/09/270 SN GN BX	PCB plug-in connector, female plug, 3.81 mm, No. of poles: 9, 270°, Clamping yoke connection, Clamping range, rated connection, max.: 1.5 mm <sup>2</sup> , Box	4032248656486 50 pc(s).	IEC: 320 V / 17.5 A / 0.2 - 1.5 mm <sup>2</sup> Box UL: 300 V / 10 A / AWG 28 - AWG 16
<a href="#">1940430000</a> BCZ 3.81/13/270 SN BK BX	PCB plug-in connector, female plug, 3.81 mm, No. of poles: 13, 270°, Clamping yoke connection, Clamping range, rated connection, max.: 1.5 mm <sup>2</sup> , Box	4032248656400 50 pc(s).	IEC: 320 V / 17.5 A / 0.2 - 1.5 mm <sup>2</sup> Box UL: 300 V / 10 A / AWG 28 - AWG 16
<a href="#">1799050000</a> BCZ 3.81/06/270 SN GN BX	PCB plug-in connector, female plug, 3.81 mm, No. of poles: 6, 270°, Clamping yoke connection, Clamping	4032248243945 50 pc(s).	IEC: 320 V / 17.5 A / 0.2 - 1.5 mm <sup>2</sup> Box UL: 300 V / 10 A / AWG 28 - AWG 16

Creation date February 20, 2013 9:11:21 PM CET

**BC/SC 3.81 series**  
**SC 3.81/02/180G 3.2SN OR BX**

**Weidmüller Interface GmbH & Co. KG**  
 Klingenbergstraße 16  
 D-32758 Detmold  
 Germany  
 Fon: +49 5231 14-0  
 Fax: +49 5231 14-292083  
 www.weidmueller.com

**Mating connector (fully pluggable)**

	range, rated connection, max.: 1.5 mm <sup>2</sup> , Box		
<a href="#">1798940000</a> BCZ 3.81/02/270 SN BK BX	PCB plug-in connector, female plug, 3.81 mm, No. of poles: 2, 270°, Clamping yoke connection, Clamping range, rated connection, max.: 1.5 mm <sup>2</sup> , Box	4032248243723 50 pc(s).	IEC: 320 V / 17.5 A / 0.2 - 1.5 mm <sup>2</sup> Box UL: 300 V / 10 A / AWG 28 - AWG 16
<a href="#">1940450000</a> BCZ 3.81/15/270 SN BK BX	PCB plug-in connector, female plug, 3.81 mm, No. of poles: 15, 270°, Clamping yoke connection, Clamping range, rated connection, max.: 1.5 mm <sup>2</sup> , Box	4032248656387 50 pc(s).	IEC: 320 V / 17.5 A / 0.2 - 1.5 mm <sup>2</sup> Box UL: 300 V / 10 A / AWG 28 - AWG 16
<a href="#">1940390000</a> BCZ 3.81/15/270 SN GN BX	PCB plug-in connector, female plug, 3.81 mm, No. of poles: 15, 270°, Clamping yoke connection, Clamping range, rated connection, max.: 1.5 mm <sup>2</sup> , Box	4032248656448 50 pc(s).	IEC: 320 V / 17.5 A / 0.2 - 1.5 mm <sup>2</sup> Box UL: 300 V / 10 A / AWG 28 - AWG 16
<a href="#">1940330000</a> BCZ 3.81/16/270 SN OR BX	PCB plug-in connector, female plug, 3.81 mm, No. of poles: 16, 270°, Clamping yoke connection, Clamping range, rated connection, max.: 1.5 mm <sup>2</sup> , Box	4032248656509 50 pc(s).	IEC: 320 V / 17.5 A / 0.2 - 1.5 mm <sup>2</sup> Box UL: 300 V / 10 A / AWG 28 - AWG 16
<a href="#">1940380000</a> BCZ 3.81/14/270 SN GN BX	PCB plug-in connector, female plug, 3.81 mm, No. of poles: 14, 270°, Clamping yoke connection, Clamping range, rated connection, max.: 1.5 mm <sup>2</sup> , Box	4032248656455 50 pc(s).	IEC: 320 V / 17.5 A / 0.2 - 1.5 mm <sup>2</sup> Box UL: 300 V / 10 A / AWG 28 - AWG 16
<a href="#">1940400000</a> BCZ 3.81/07/270 SN BK BX	PCB plug-in connector, female plug, 3.81 mm, No. of poles: 7, 270°, Clamping yoke connection, Clamping range, rated connection, max.: 1.5 mm <sup>2</sup> , Box	4032248656431 50 pc(s).	IEC: 320 V / 17.5 A / 0.2 - 1.5 mm <sup>2</sup> Box UL: 300 V / 10 A / AWG 28 - AWG 16
<a href="#">1798950000</a> BCZ 3.81/04/270 SN BK BX	PCB plug-in connector, female plug, 3.81 mm, No. of poles: 4, 270°, Clamping yoke connection, Clamping range, rated connection, max.: 1.5 mm <sup>2</sup> , Box	4032248243730 50 pc(s).	IEC: 320 V / 17.5 A / 0.2 - 1.5 mm <sup>2</sup> Box UL: 300 V / 10 A / AWG 28 - AWG 16
<a href="#">1798980000</a> BCZ 3.81/10/270 SN BK BX	PCB plug-in connector, female plug, 3.81 mm, No. of poles: 10, 270°, Clamping yoke connection, Clamping range, rated connection, max.: 1.5 mm <sup>2</sup> , Box	4032248243761 50 pc(s).	IEC: 320 V / 17.5 A / 0.2 - 1.5 mm <sup>2</sup> Box UL: 300 V / 10 A / AWG 28 - AWG 16



**BC/SC 3.81 series**  
**SC 3.81/02/180G 3.2SN OR BX**

**Weidmüller Interface GmbH & Co. KG**  
 Klingenbergstraße 16  
 D-32758 Detmold  
 Germany  
 Fon: +49 5231 14-0  
 Fax: +49 5231 14-292083  
 www.weidmueller.com

**Mating connector (fully pluggable)**

<a href="#">1799080000</a> BCZ 3.81/12/270 SN GN BX	PCB plug-in connector, female plug, 3.81 mm, No. of poles: 12, 270°, Clamping yoke connection, Clamping range, rated connection, max.: 1.5 mm <sup>2</sup> , Box	4032248243976 50 pc(s).	IEC: 320 V / 17.5 A / 0.2 - 1.5 mm <sup>2</sup> Box UL: 300 V / 10 A / AWG 28 - AWG 16
<a href="#">1940260000</a> BCZ 3.81/09/270 SN OR BX	PCB plug-in connector, female plug, 3.81 mm, No. of poles: 9, 270°, Clamping yoke connection, Clamping range, rated connection, max.: 1.5 mm <sup>2</sup> , Box	4032248656578 50 pc(s).	IEC: 320 V / 17.5 A / 0.2 - 1.5 mm <sup>2</sup> Box UL: 300 V / 10 A / AWG 28 - AWG 16
<a href="#">1799060000</a> BCZ 3.81/08/270 SN GN BX	PCB plug-in connector, female plug, 3.81 mm, No. of poles: 8, 270°, Clamping yoke connection, Clamping range, rated connection, max.: 1.5 mm <sup>2</sup> , Box	4032248243952 50 pc(s).	IEC: 320 V / 17.5 A / 0.2 - 1.5 mm <sup>2</sup> Box UL: 300 V / 10 A / AWG 28 - AWG 16
<a href="#">1940370000</a> BCZ 3.81/13/270 SN GN BX	PCB plug-in connector, female plug, 3.81 mm, No. of poles: 13, 270°, Clamping yoke connection, Clamping range, rated connection, max.: 1.5 mm <sup>2</sup> , Box	4032248656462 50 pc(s).	IEC: 320 V / 17.5 A / 0.2 - 1.5 mm <sup>2</sup> Box UL: 300 V / 10 A / AWG 28 - AWG 16
<a href="#">1940240000</a> BCZ 3.81/07/270 SN OR BX	PCB plug-in connector, female plug, 3.81 mm, No. of poles: 7, 270°, Clamping yoke connection, Clamping range, rated connection, max.: 1.5 mm <sup>2</sup> , Box	4032248656592 50 pc(s).	IEC: 320 V / 17.5 A / 0.2 - 1.5 mm <sup>2</sup> Box UL: 300 V / 10 A / AWG 28 - AWG 16
<a href="#">1940200000</a> BCZ 3.81/03/270 SN OR BX	PCB plug-in connector, female plug, 3.81 mm, No. of poles: 3, 270°, Clamping yoke connection, Clamping range, rated connection, max.: 1.5 mm <sup>2</sup> , Box	4032248656639 50 pc(s).	IEC: 320 V / 17.5 A / 0.2 - 1.5 mm <sup>2</sup> Box UL: 300 V / 10 A / AWG 28 - AWG 16
<a href="#">1940320000</a> BCZ 3.81/15/270 SN OR BX	PCB plug-in connector, female plug, 3.81 mm, No. of poles: 15, 270°, Clamping yoke connection, Clamping range, rated connection, max.: 1.5 mm <sup>2</sup> , Box	4032248656516 50 pc(s).	IEC: 320 V / 17.5 A / 0.2 - 1.5 mm <sup>2</sup> Box UL: 300 V / 10 A / AWG 28 - AWG 16
<a href="#">1799070000</a> BCZ 3.81/10/270 SN GN BX	PCB plug-in connector, female plug, 3.81 mm, No. of poles: 10, 270°, Clamping yoke connection, Clamping range, rated connection, max.: 1.5 mm <sup>2</sup> , Box	4032248243969 50 pc(s).	IEC: 320 V / 17.5 A / 0.2 - 1.5 mm <sup>2</sup> Box UL: 300 V / 10 A / AWG 28 - AWG 16
<a href="#">1798990000</a> BCZ 3.81/12/270 SN BK BX	PCB plug-in connector, female plug, 3.81 mm, No. of poles: 12, 270°, Clamping yoke connection, Clamping range, rated connection, max.: 1.5 mm <sup>2</sup> , Box	4032248243778 50 pc(s).	IEC: 320 V / 17.5 A / 0.2 - 1.5 mm <sup>2</sup> Box UL: 300 V / 10 A / AWG 28 - AWG 16

Creation date February 20, 2013 9:11:21 PM CET

**BC/SC 3.81 series**  
**SC 3.81/02/180G 3.2SN OR BX**

**Weidmüller Interface GmbH & Co. KG**  
 Klingenbergstraße 16  
 D-32758 Detmold  
 Germany  
 Fon: +49 5231 14-0  
 Fax: +49 5231 14-292083  
 www.weidmueller.com

**Mating connector (fully pluggable)**

Clamping yoke connection,  
 Clamping range, rated  
 connection, max.: 1.5 mm<sup>2</sup>,  
 Box

[1799090000](#) BCZ 3.81/16/270 SN GN BX

PCB plug-in connector, 4032248243983 50 pc(s).  
 female plug, 3.81 mm,  
 No. of poles: 16, 270°,  
 Clamping yoke connection,  
 Clamping range, rated  
 connection, max.: 1.5 mm<sup>2</sup>,  
 Box

IEC: 320 V / 17.5 A / 0.2 - 1.5 mm<sup>2</sup> Box  
 UL: 300 V / 10 A / AWG 28 - AWG 16

