

Overview

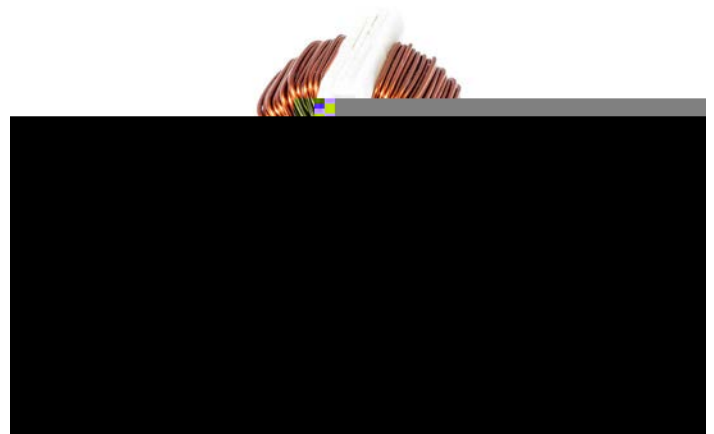
feature a newly developed, high permeability core.

Applications

- Audio-visual Equipment
- Consumer Electronics
- Power Supply Devices
- Common mode choke

Benefits

- High impedance achieved by using a newly developed core with high permeability
- 30% reduction in volume while maintaining the same properties, thus saving space and reducing part count
- Inductances up to 25 mH
- Rated Currents up to 5 A

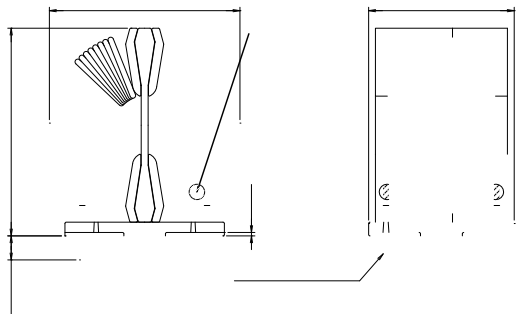


Part Number System

SCR-	020-	0R55	A	250	JH
Type	Rated Current (A)	Wire Diameter (mm)	Windings	Minimum Inductance (mH)	Orientation
SCR-	0x0 = x A (e.g., 020 = 2 A)	R = Decimal point (e.g., 0R55 = 0.55 mm, 0R8 = 0.8 mm)	A = Single	xx0 = xx mH (e.g., 250 = 25 mH) 0x0 = x mH (e.g., 070 = 7 mH)"	J = Vertical JH = Horizontal

Dimensions – Millimeters

SCR-J



Specifications

Frequency Characteristics

KEMET Electronics Corporation Sales Offices

Disclaimer

checking and verifying the extent to which the Information contained in this publication is applicable to an order at the time the order is placed.

All Information given herein is believed to be accurate and reliable, but it is presented without guarantee, warranty, or responsibility of any kind, expressed or implied.

The Information is intended for use only by customers who have the requisite experience and capability to determine the correct products for their application. Any technical advice inferred from this Information or otherwise provided by KEMET with reference to the use of KEMET's products is given gratis, and KEMET assumes no obligation or liability for the advice given or results obtained.

Although KEMET designs and manufactures its products to the most stringent quality and safety standards, given the current state of the art, isolated component failures may still occur. Accordingly, customer applications which require a high degree of reliability or safety should employ suitable designs or other safeguards

property damage.

measures may not be required.