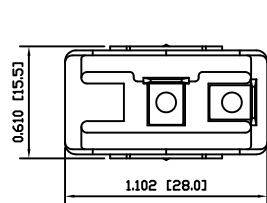


MATERIALS

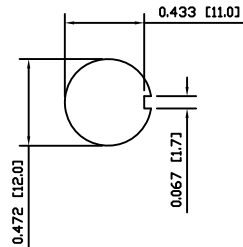
- BODY:**
Phenolic, UL94 V-0
- ACTUATOR:**
Nickel Plated Brass
- BUSHING:**
Nickel Plated Brass
- HOUSING:**
Nickel Plated Steel
- HARDWARE:**
Nickel Plated Brass
- SPACER PLATE:**
Epoxy Board
- SPRING:**
Steel
- ACTUATOR PLUNGER:**
Phenolic, UL94 V-0
- MOBILE CONTACT BAR:**
Silver Plated Copper
- CENTER PIVOT:**
Silver Plated Copper
- CONTACTS:**
Silver Alloy Clad Copper
- TERMINALS:**
Brass

SPECIFICATIONS

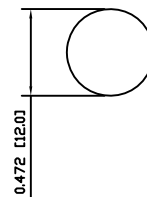
- FUNCTION:**
1P1T OFF-(ON)
- RATINGS:**
ANSI/UL1054 and CAN/CSA C22.2 No.55 (E194579):
20A 125VAC [cURus]
15A 277VAC [cURus]
1.5HP 125/277VAC [cURus]
- CONTACT RESISTANCE:**
Initial: 10mΩ Max.
- INSULATION RESISTANCE:**
10MΩ Min.
- DIELECTRIC STRENGTH:**
1,500VAC for 1 Minute
- OPERATING LIFE:**
6,000 Cycles [cURus]
- TEMPERATURE:**
Operating: 0°C to 85°C [cURus]
- APPROVALS:**



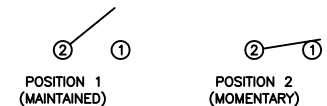
SUGGESTED PANEL CUTOUT



ALTERNATE PANEL CUTOUT



SCHEMATIC



ACTUATOR	B	10/06/10	CAB
BODY	B	10/06/10	CAB
MATERIALS	B	10/06/09	CAB
SPECIFICATIONS	B	10/06/09	CAB
REFERENCE	REV.	DATE	BY

THE INFORMATION CONTAINED IN THIS DOCUMENT IS PROPRIETARY TO E-SWITCH AND IS NOT TO BE COPIED OR TRANSFERRED

A	INITIAL RELEASE	19206	10/07/20	CAB
REV.	DESCRIPTION	PCR	DATE	DRAWN BY

DIMENSIONS	
INCHES [MILLIMETERS]	
GENERAL TOLERANCES	
±0.008 [±0.2] / ±1'	
SCALE	PROJECTION
DRAWING NOT TO SCALE	1:1

TITLE			
ST144D10			
DRAWING NUMBER		DATE	
34-ST144D10		JULY 20, 2010	
REVISION		BY	
A		A	