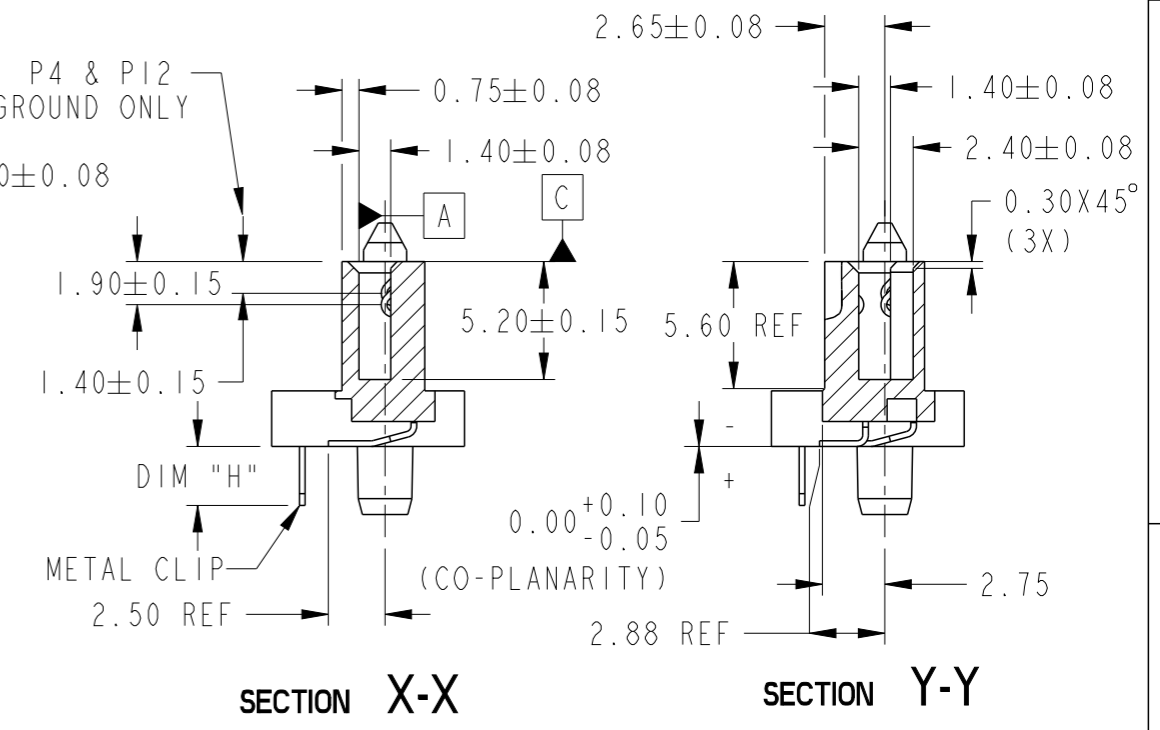
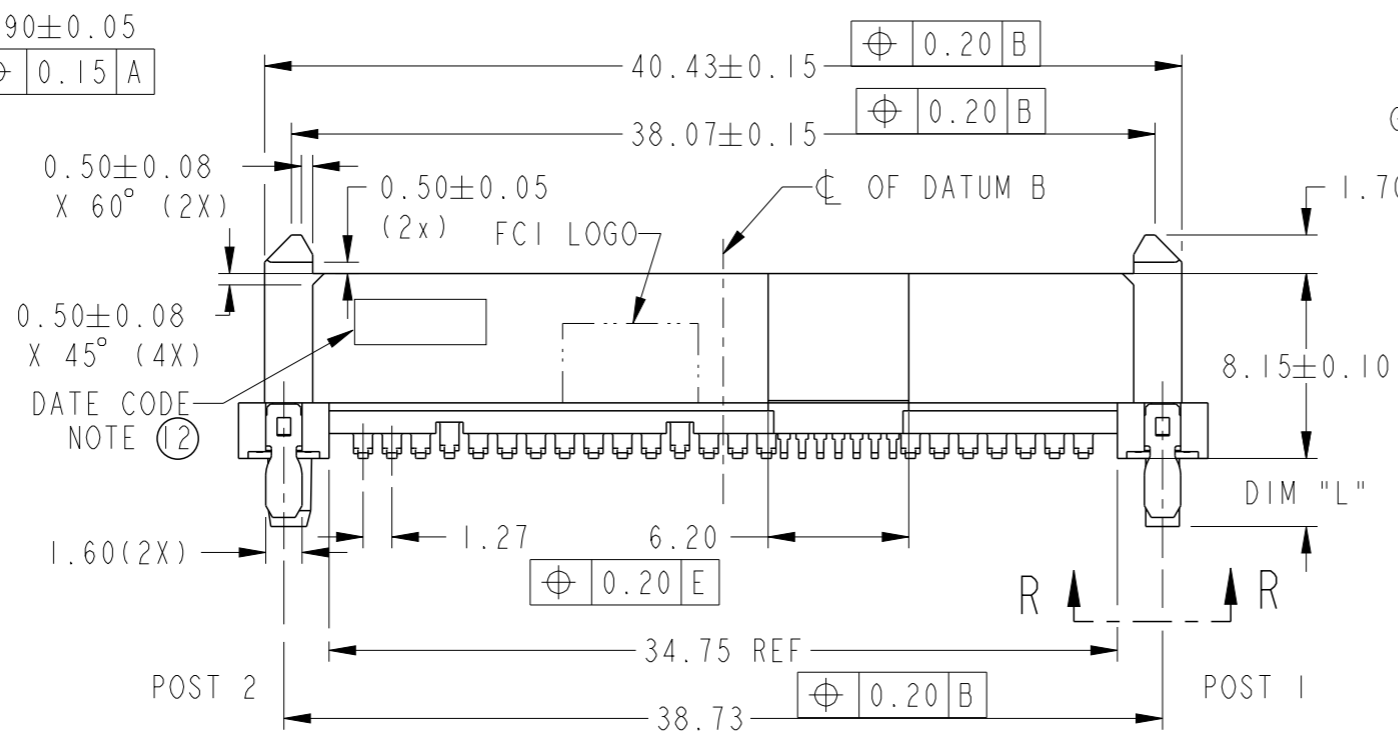
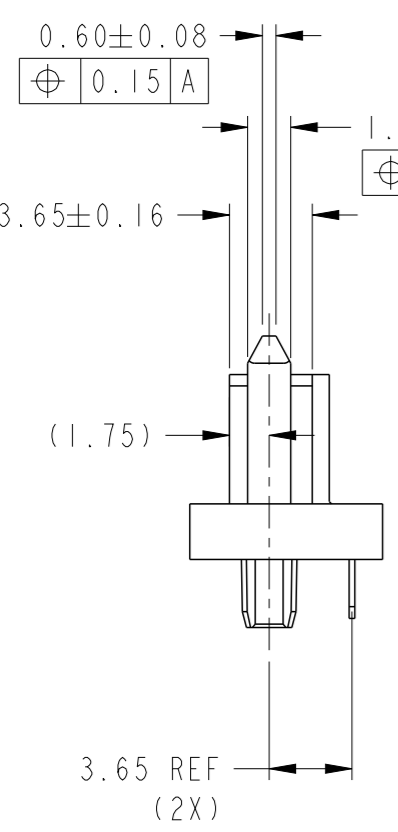
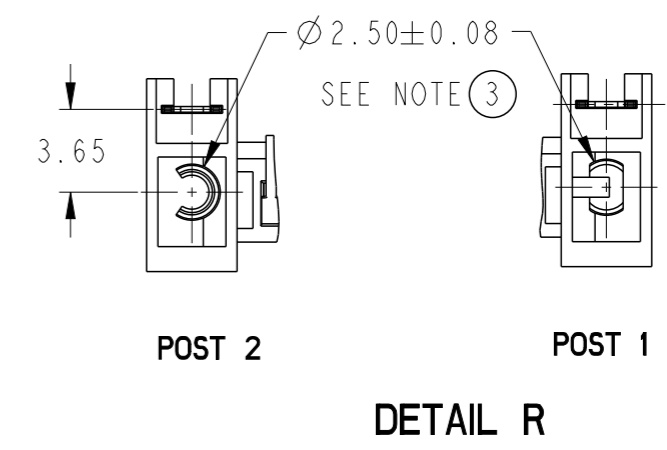
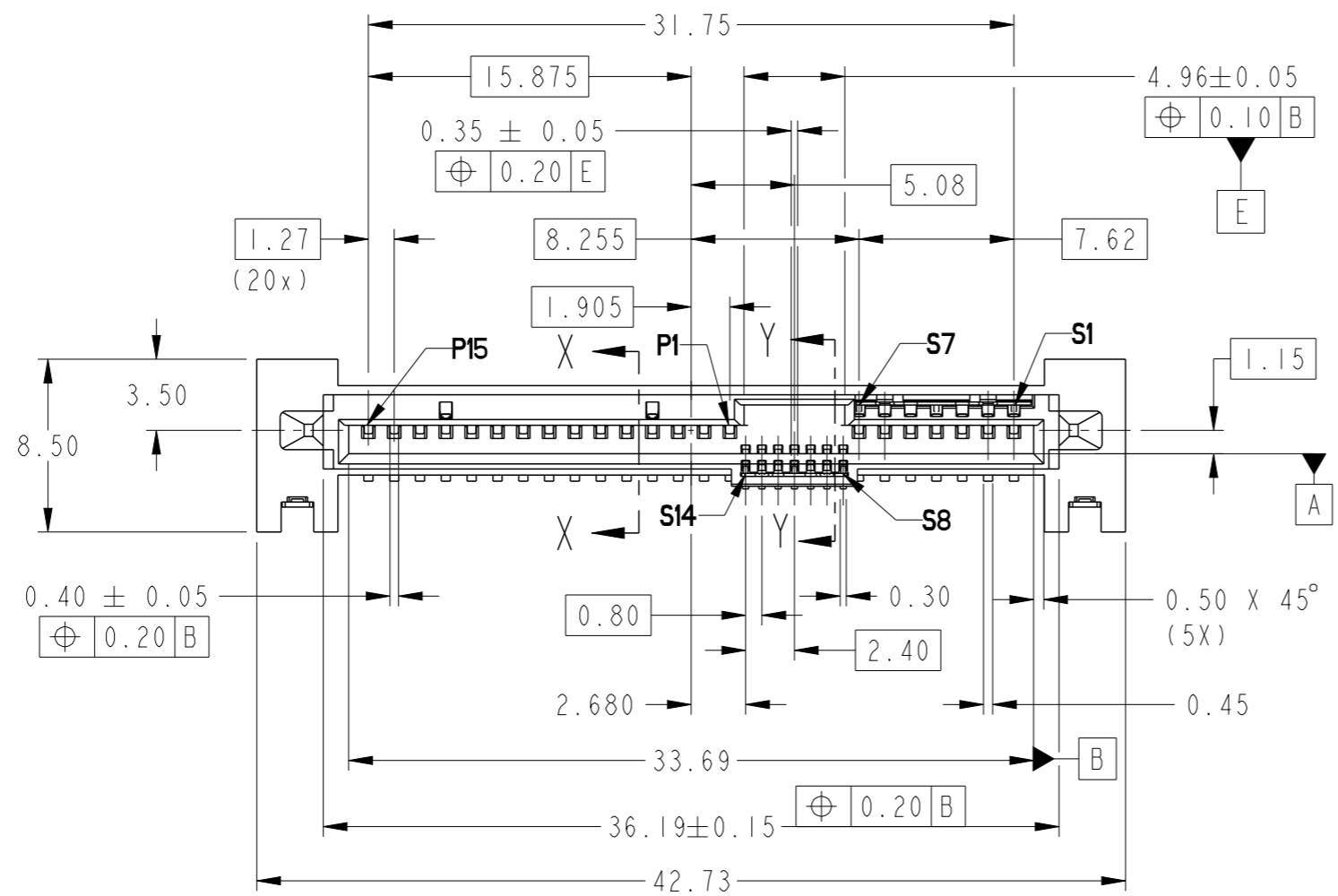


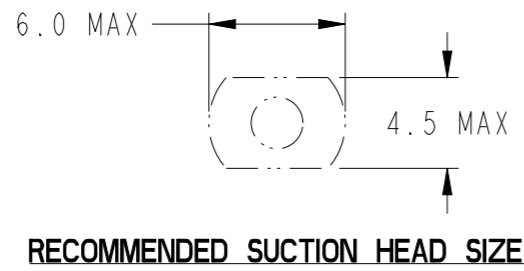
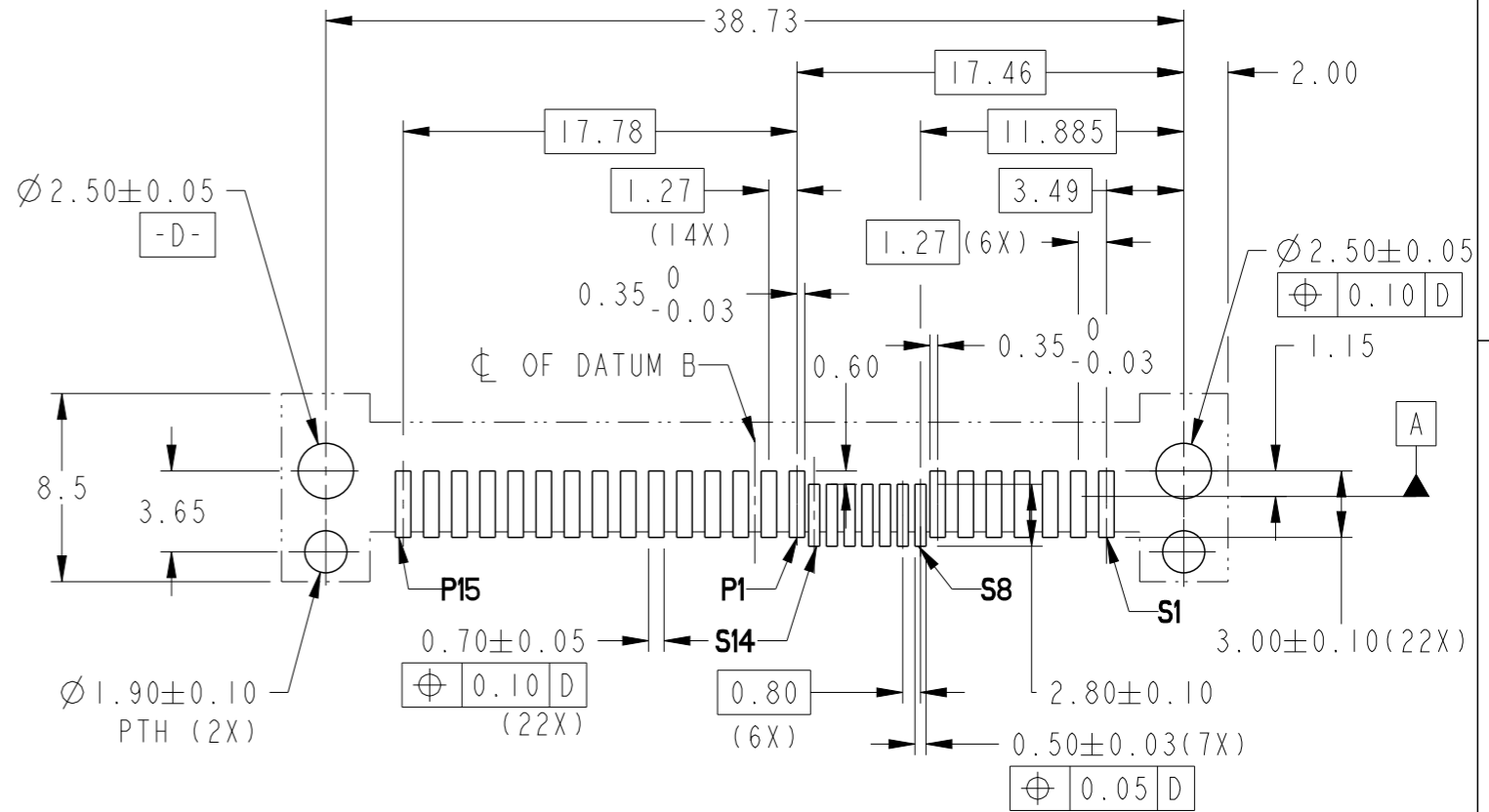
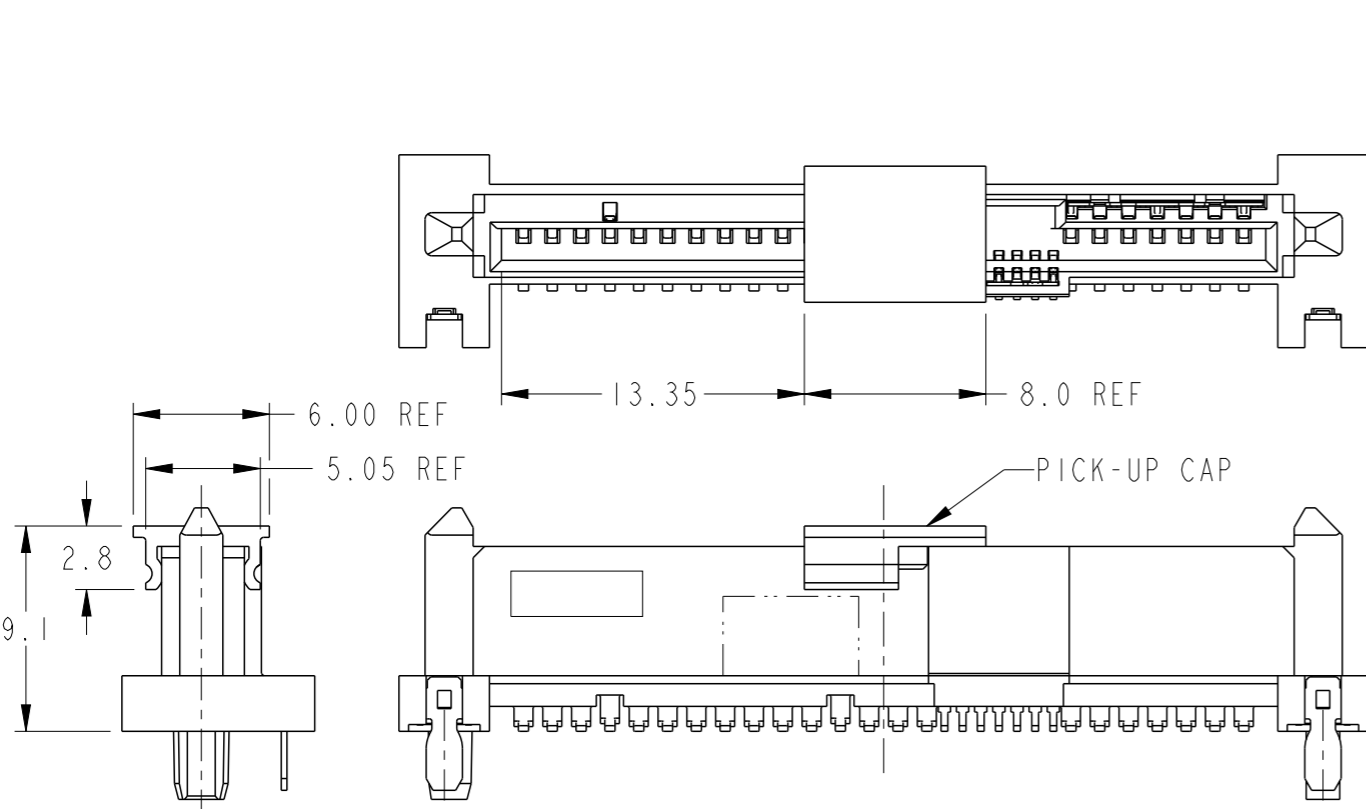
PRODUCT NUMBER
SEE TABLE



Amphenol FCI
© 2016 AFCI

spec ref	-	dr	Guat-Lian Loo	2013/07/04	projection	MM	size	A3	scale	3:1
tolerance std	ISO 406 ISO 1101	eng	Noorhazlinda	2018/03/08		← →	ecn no	ELX-M-29470-1	rel level	Released
TOLERANCES UNLESS OTHERWISE SPECIFIED		chr	-	2018/03/21						
surface	linear	0.X	± -	Amphenol FCI	12G SAS RECEPTACLE		dwg no	10123000	rev	F
	angular	0.XXX	± -		WIDE BASE SMT TYPE ASSY					
		ISO 1302	0°	cat. no.	-	Product - Customer Drw	sheet 1 of 3			

PRODUCT NO	DIM L	DIM H	RECOMMENDED P.C. BOARD THICKNESS	PICK-UP CAP	PACKAGING	REMARK
10123000-001LF	3.7	2.6	4.57mm (0.180")	NO	TRAY	--
10123000-001CLF				YES		
10123000-001C-TRLF				YES	TAPE & REEL	
10123000-002LF	2.0	2.6	2.54mm (0.100")	NO	TRAY	--
10123000-002CLF				YES		
10123000-002C-TRLF				YES	TAPE & REEL	
10123000-003LF	3.7 \triangle _F	1.7	2.00mm (0.079")	NO	TRAY	--
10123000-003CLF				YES		
10123000-003C-TRLF				YES	TAPE & REEL	



spec ref	-	dr	Guat-Lian Loo	2013/07/04	projection	MM	size	A3	scale	3:1
tolerance std	ISO 406 ISO 1101	eng	Noorhazlinda	2018/03/08		← →	ecn no	ELX-M-29470-1		
TOLERANCES UNLESS OTHERWISE SPECIFIED		chr	-	-			rel level	Released		
surface	linear	appr	Koon-Poh Tay	2018/03/21	product family	SAS	rel level	Released		
ISO 1302	angular	0°	± 2°	Amphenol FCI			dwg no	10123000		
		0.X	± -	12G SAS RECEPTACLE			rev	F		
		0.XX	± .20	WIDE BASE SMT TYPE ASSY			cat. no.	-		
		0.XXX	± -	Product - Customer Drw			sheet 2 of 3			


RECOMMENDED PCB LAYOUT
SCALE 3:1

Amphenol FCI

© 2016 AFCI

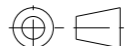
PRODUCT NUMBER
SEE TABLE

NOTES:

1. MATERIAL:
 - 1) HOUSING: HIGH TEMP TERMOPLASTIC, UL 94V-0
COLOR : BLACK
 - 2) TERMINAL: COPPER ALLOY
 - 3) HOLD DOWN: COPPER ALLOY
2. FINISH:
 - 1) TERMINAL: 30μ" Au PLATING (CONTACT POINT)
OVER 50μ" NICKEL
 - 2) SOLDER TAIL: 50μ" MIN Sn OVER 50μ" MIN NICKEL
 - 3) HOLD DOWN: 50μ" MIN Sn OVER 50μ" MIN NICKEL
3. THE DIM. IS MEASURED AT P.C. BOARD SITTING PLANE
4. PER SEF REV 1.3 EXCEPT 0.8mm PITCH BUMP AREA
5. PART WITH PICK-UP CAP, P/N XXXXXXXX-XXXCLF
6. THE STD PACKAGING IS IN TRAY
7. THE TAPE & REEL PACKAGING, SUFFIX "-TR" ADDED AFTER
PRODUCT NUMBER (E.G. XXXXXXXX-XXXC-TRLF)
8. THE HOUSING WILL WITHSTAND EXPOSURE TO 260°C PEAK TEMPERATURE
FOR 10 SECONDS IN A CONVECTION, INFRA-RED OR VAPOR PHASE REFLOW
OVEN.
9. THIS PRODUCT MEETS EUROPEAN UNION DIRECTIVES AND OTHER COUNTRY
REGULATIONS AS DESCRIBED IN GS-47-0004.
10. PART NUMBERS ENDING IN "LF" MEANS FOR NOTE 8 LEAD FREE IDENTIFICATION
11. A  SYMBOL WILL BE NEXT TO ANY DIMENSION, VIEW, OR NOTE WHICH HAS
BEEN MODIFIED WITH THE CURRENT DRAWING REVISION.
12. DATE CODE LOCATION. DATE CODE NO.YYWW (E.G.14225).
13. CORING AT NON FUNCTIONAL AREAS ARE SUBJECT TO CHANGE WITHOUT NOTICES.

Amphenol
FCi

© 2016 AFci

spec ref -		dr	Guat-Lian Loo	2013/07/04	projection	MM	size	A3	scale	3:1
tolerance std		TOLERANCES UNLESS OTHERWISE SPECIFIED				← →	ecn no		ELX-M-29470-1	
ISO 406	ISO 1101	eng	Noorhazlinda	2018/03/08			rel level		Released	
surface	linear	chr	-	-	product family		SAS	rev		F
ISO 1302	angular	appr	Koon-Poh Tay	2018/03/21	12G SAS RECEPTACLE		dwg no		10123000	
					WIDE BASE SMT TYPE ASSY		cat. no.		Product - Customer Drw	
									sheet 3 of 3	