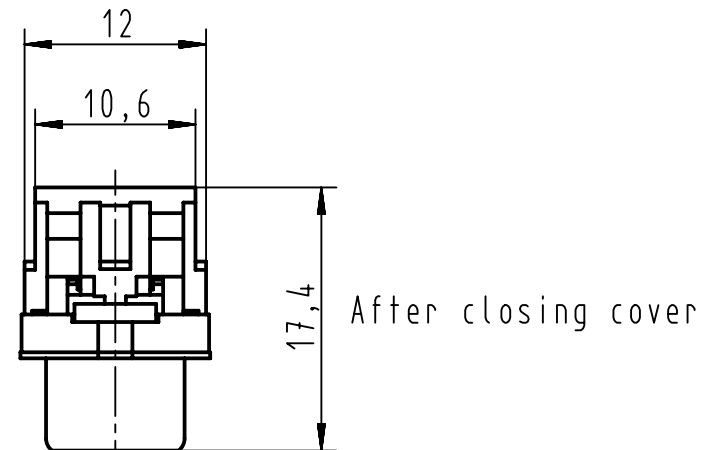
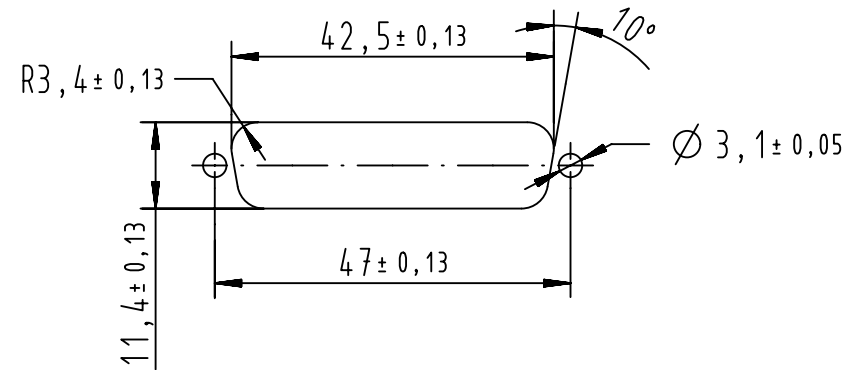
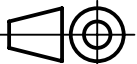



Recommended panel cutout dimensions
for rear mounting
According to CECC 75 301-802



09663287702	PL3	4-40UNC	 All Dimensions in mm Original Size DIN A4	Scale 2:1	Free size tol.		Ref.	
09663286702	PL2	4-40UNC		 All rights reserved Department EC PD - FR	Created by DOUGE	Inspected by BAGDIKIAN	Standardisation HOFFMANN	Date 2013-04-23
09663287701	PL3	M3	HARTING Electronics GmbH D-32339 Espelkamp		Title D-Sub IDC 25P male straight			Doc-Key / ECM-Nr. 100527209/UGD/001/A 5300000858839
09663286701	PL2	M3		Type TB	Number 0966328X70X		Rev. A	Page 1/1
Part number	Performance level	Nut thread						