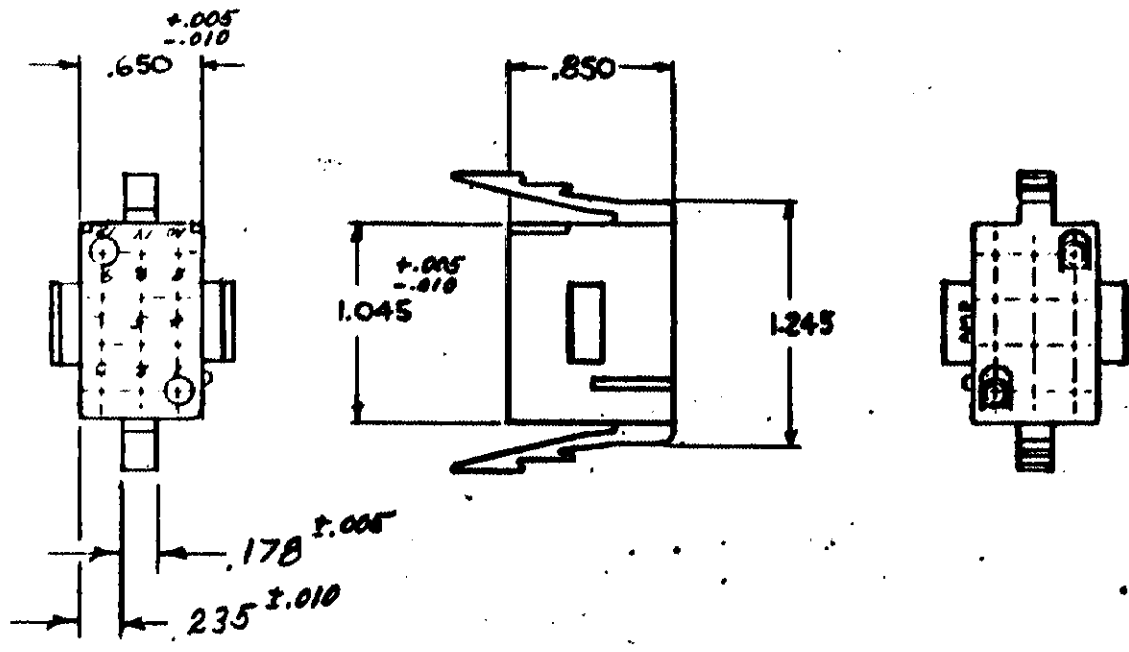


143

NUMBER 480275



-NOTE-

1- HOUSING TO BE USED WITH MATE-N-LOK SOCKETS.
 2- TO BE USED WITH PIN HOUSING 480278.

HOUSING N ^o	MATERIAL & COLOR
1-480275-0	NYLON - NATURAL

DIMENSIONS IN INCHES DO NOT SCALE PRINT

©1964 BY AMP INCORPORATED, ALL RIGHTS RESERVED. AMP PRODUCTS COVERED BY PATENTS AND/OR PATENTS PENDING.

CUSTOMER COPY REFERENCE ONLY

MATERIAL AND FINISH



SEE TABLE

CLASS .086 DIA SOCKET

M	OBS. 1-1, 1-7 (1-9)	PKC	TB	6-17-67
	PER CM-895			
L	OBS. 1-2 (1-8)	PKC	TB	4/2/67
	PER CM-758			

WIRE — RANGE — INSULATION
WIRE .136 MAX DIA
 RANGE .015 MAX DIA

TYPE PANEL MOUNT

	REVISION RECORD	DR	CHK.	DATE

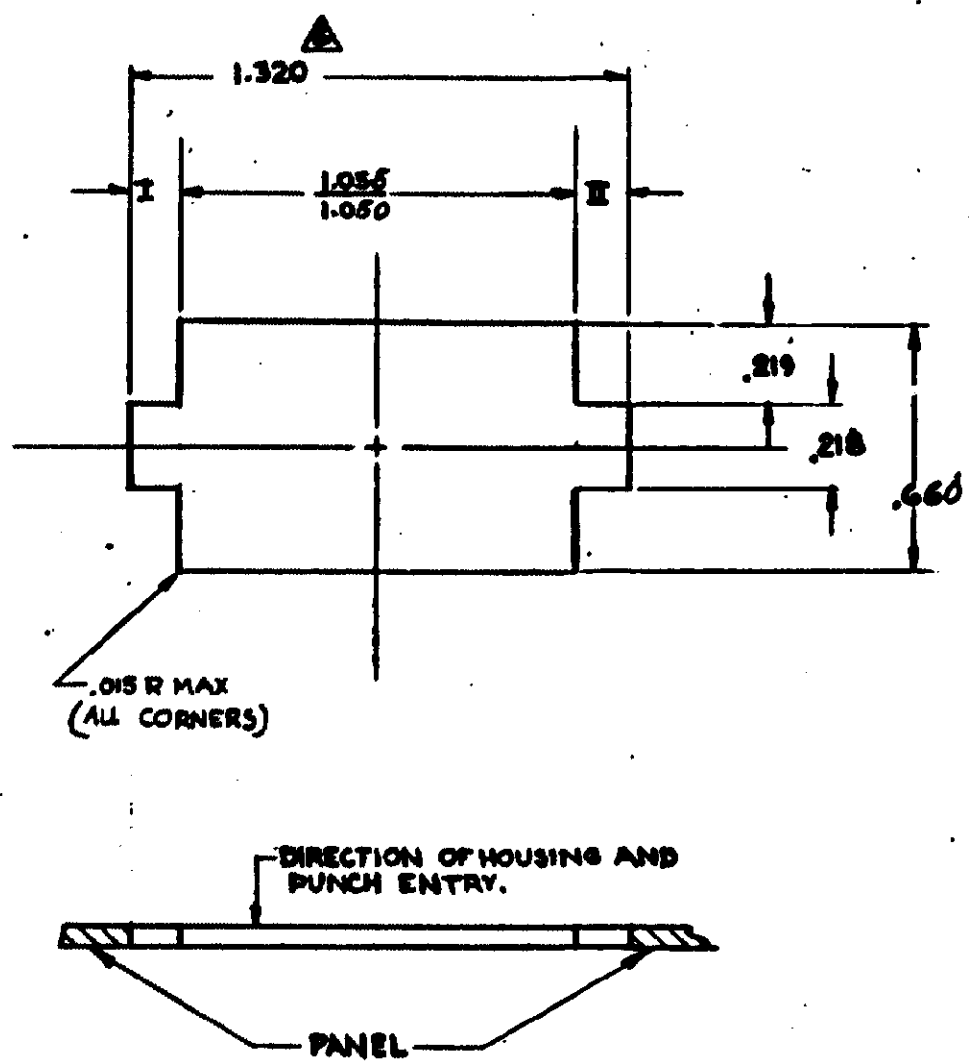
TOLERANCE EXCEPT AS NOTED
 $\pm .010$ $\pm 1^{\circ} 0'$ SCALE 1:1

LOC CM A NO 480275 M

NAME 12 CIRCUIT, MATE-N-LOK™ PLUG

53

SHEET I OF II
NUMBER
480275



-NOTE-

- 1-RECOMMENDED PANEL THICKNESS .025-.068
- 2-BOTH LOCKING LEGS TO BE SQUEEZED TOGETHER AND HOUSING TO BE INSERTED STRAIGHT-IN, AS OPPOSED TO A ROCKING MANNER OF INSERTION
- 3-PANEL MUST BE PUNCHED SO THAT THE HOUSING ENTERS THE PANEL IN THE SAME DIRECTION AS THE PUNCH.
- 4-DIMENSIONS I & II TO BE EQUAL WITHIN .005
- 5-PANEL MUST NOT HAVE ANY MATERIAL (PAINT, PORCELAIN ETC.) APPLIED IN THE MOUNTING HOLE AREA THAT WOULD DECREASE RETENTION OF THE HOUSING IN THE PANEL.
- 6 IF NOTES 3 AND/OR 5 ARE NOT COMPLIED WITH, THE 1.320 DIM. SHOULD BE REDUCED TO 1.300 TO ASSURE PROPER HOUSING RETENTION IN THE PANEL.

DIMENSIONS IN INCHES DO NOT SCALE PRINT

X				
LTR	REVISION RECORD	DR	CHK	DATE

©1964 BY AMP INCORPORATED. ALL RIGHTS RESERVED. AMP PRODUCTS COVERED BY PATENTS AND/OR PATENTS PENDING.

CUSTOMER COPY REFERENCE ONLY

MATERIAL AND FINISH

WIRE — RANGE — INSULATION

TOLERANCE EXCEPT AS NOTED ± .005 ± 1" 0'

NAME MOUNTING HOLE INFORMATION FOR 12 CIRCUIT PANEL MOUNT MATHEMATICAL

AMP AMP INCORPORATED HARRISBURG, PENNA.

CLASS

TYPE

LOC CM A NO SHEET II of II 480275 REV M