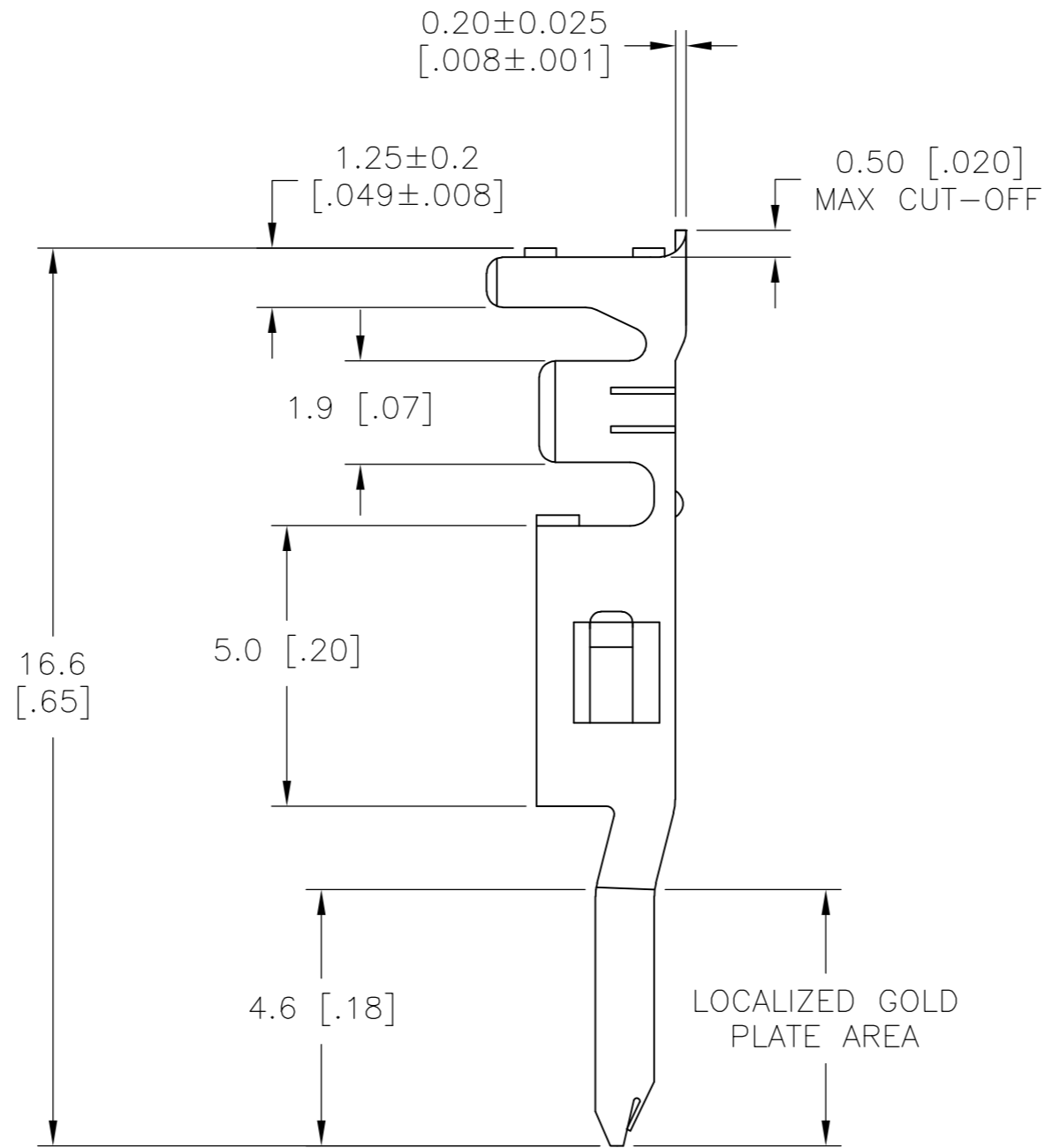
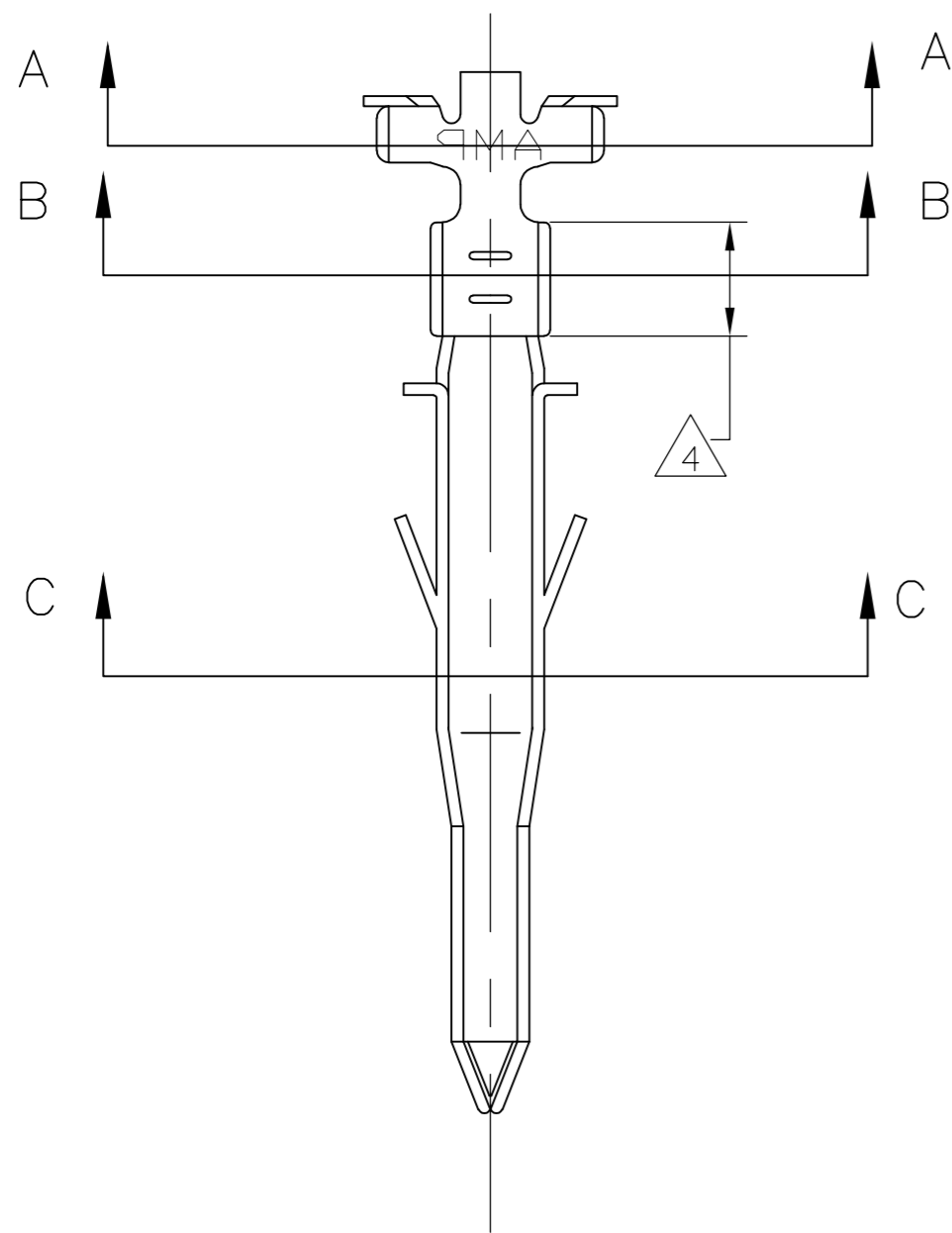
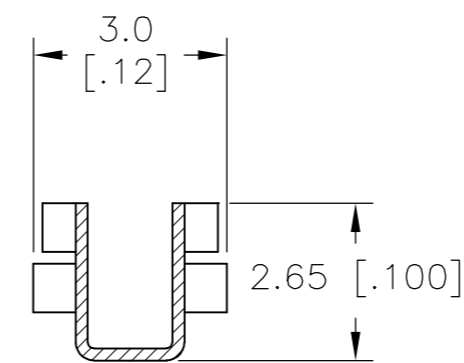
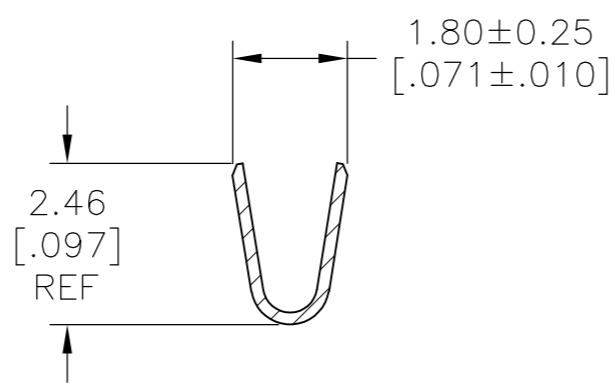
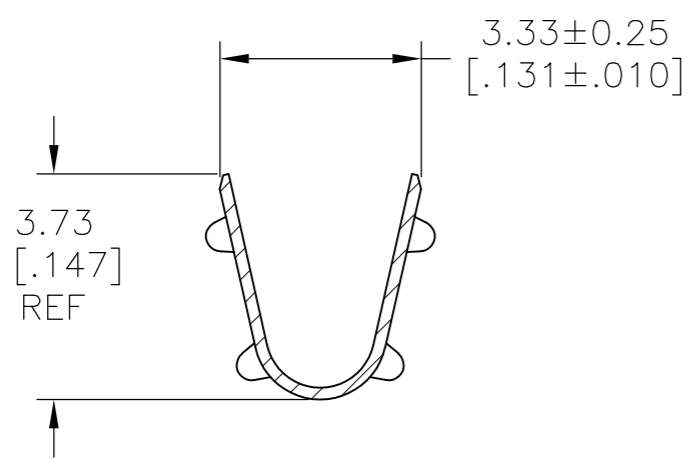


THIS DRAWING IS UNPUBLISHED. RELEASED FOR PUBLICATION
 © COPYRIGHT - By - ALL RIGHTS RESERVED.

LOC		DIST		REVISIONS			
P	LTR	DESCRIPTION		DATE	DWN	APVD	
-	-	A		RELEASED PER ECO-14-006097	24APR14	JR	KR



- 1 WIRE RANGE 0.3-0.82mm² [22-18 AWG]
- 2 INSULATION RANGE 1.50-3.10 [0.060-1.22]
- 3 FINISH: 0.76um MIN GOLD OVER 1.27um MIN NICKEL REQUIRED ON INNER SURFACE, PERMITTED ON OUTER SURFACE.
- 4 FINISH: 2.54um MIN PRE-TIN ON ALL SURFACES IN THIS AREA.
- 5 FINISH: 2.54um MIN PRE-TIN ALL OVER
- 6 PRELIMINARY - NOT FOR PRODUCTION



SECTION A-A

SECTION B-B

SECTION C-C

GOLD 3 4	PHOS BRONZE	6	2238020-4
PRE-TIN 5	PHOS BRONZE	6	2238020-3
GOLD 3 4	BRASS	6	2238020-2
PRE-TIN 5	BRASS		2238020-1
FINISH	MATERIAL		PART NO.

THIS DRAWING IS A CONTROLLED DOCUMENT.		DWN	JR RUTH	25FEB14	 TE Connectivity								
DIMENSIONS: mm [INCHES]		CHK	K RANDOLPH	25FEB14									
TOLERANCES UNLESS OTHERWISE SPECIFIED:		APVD	K RANDOLPH	25FEB14									
0 PLC ± - 1 PLC ± - 2 PLC ± 0.10 [.004] 3 PLC ± - 4 PLC ± - ANGLES ± -		PRODUCT SPEC	NAME										
MATERIAL	SEE TABLE	FINISH	SEE TABLE	WEIGHT	-	SIZE	A2	CAGE CODE	00779	DRAWING NO.	C=2238020	RESTRICTED TO	-
CUSTOMER DRAWING		SCALE		8:1	SHEET	1 OF 1	REV	A					

2238020