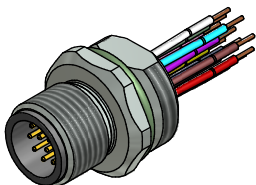


Contact assignment:

- | | |
|------------|----------------|
| 1 - brown | 7 - black |
| 2 - blue | 8 - grey |
| 3 - white | 9 - red |
| 4 - green | 10 - violet |
| 5 - pink | 11 - grey-pink |
| 6 - yellow | 12 - red-blue |



Technical specification :

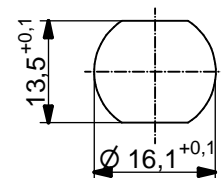
Rated voltage:	30 V
IEC 61076-2-101	
Current rating:	1,5 A at 40°C
IEC 61076-2-101	
Insulation resistance:	>=100 MΩ
IEC 60512	
Pollution degree:	3/2
IEC 60664-1	
Degree of protection:	IP 67, in mated condition
IEC 60529	
Temperature range:	-30°C ... +80°C
Mating cycles:	>=100
IEC 60512-9a	

Materials:

Contact:	CuZn
Contact plating:	Nickel, gold plated
Contact carrier:	PBT GF, UL 94
Sealing:	FPM
Socket housing:	CuZn, nickel plated
Grouting:	Polyurethane-resin, UL 94

Installation specification:

recommended torque:	1-1,2 Nm
Conec installation tool:	Torque wrench: 36-000200 Insert across flats 17: 36-000230



Minimum wall thickness 1,5mm,
alternativ panel cut-out d=16,1

Part no:	Description:	Pos	Length L:	Wire:
43-01330	SAL - 12 - FS12 - 0,5	12	0,5m	AWG 26 PVC, UL
43-xxxxx	SAL - 12 - FS12 - ...	12	x	

DO NOT ALTER CAD DRAWING BY HAND Directive 2002/95/EC RoHS compliant	Index: d 15.02.13 MG Ä4631 Data sheet revised, technical specification changed, materials corrected	dim. in mm	title: Male socket M12x1 wir wire, frontmounting								
	tolerance of wire: L <= 0,5m: L + 20mm L > 0,5m: L + 4%				<table border="1"> <tr> <td></td> <td>date</td> <td>name</td> </tr> <tr> <td>drawn</td> <td>16.10.08</td> <td>Fromm</td> </tr> <tr> <td>appd.</td> <td>16.10.08</td> <td>Mankopf</td> </tr> </table>		date	name	drawn	16.10.08	Fromm
		date	name								
	drawn	16.10.08	Fromm								
appd.	16.10.08	Mankopf									
general tolerance: 0 ± 0,50mm 0,0 ± 0,25mm 0,00 ± 0,10mm		dwg no: 43K1A772									
<small>THIS DRAWING MAY NOT BE COPIED OR REPRODUCED IN ANY WAY, AND MAY NOT BE PASSED ON TO A THIRD PARTY WITHOUT WRITTEN PERMISSION. OWNERSHIP AND COPYRIGHT OF CONEC GmbH</small>		part no: see table									