

## Device connector, rear mounting - PRC 3-FT25-MC6-150 - 1409221

Please be informed that the data shown in this PDF Document is generated from our Online Catalog. Please find the complete data in the user's documentation. Our General Terms of Use for Downloads are valid (<http://phoenixcontact.com/download>)



PRC device connector, black, 3-pos., 6 mm<sup>2</sup>/630 V/35 A, crimp connection, with 150 mm cable length, cut flat at the end



### Key Commercial Data

|                                      |          |
|--------------------------------------|----------|
| Packing unit                         | 1 pc     |
| Weight per Piece (excluding packing) | 52.0 g   |
| Custom tariff number                 | 85444290 |
| Country of origin                    | Germany  |

### Technical data

#### General data

|                             |                 |
|-----------------------------|-----------------|
| Number of positions         | 3               |
| Protection class            | III             |
| Color                       | black           |
| Locking type                | Snap-in locking |
| Insertion/withdrawal cycles | 50              |
| Pull-out-force              | 175 N ± 25 N    |
| Insertion force             | 30 N ± 10 N     |

#### Connection data

|                                       |   |
|---------------------------------------|---|
| Rated current                         | 35 A (with 6 mm <sup>2</sup> conductor cross section) |
| Rated voltage (III/2)                 | 690 V   |
| Conductor cross section flexible max. | 6 mm <sup>2</sup>                                     |
| Conductor cross section solid max.    | 6 mm <sup>2</sup>                                     |
| Torque                                | 2.5 Nm ± 0.1 Nm (Tightening torque nut)               |
| Wrench size, union nut                | 32.00 mm  |
| Type of contact                       | Male connector  |

## Device connector, rear mounting - PRC 3-FT25-MC6-150 - 1409221

### Technical data

#### Material data

|   |               |
|---|---------------|
| Contact material                        | Cu            |
| Contact surface material                | silver-plated |
| Contact carrier material                | PPE           |
| Material of grip body                   | PPE           |
| Inflammability class according to UL 94 | V0            |

#### Conductor data

|                                |                           |
|--------------------------------|---------------------------|
| Fixed cable length             | 150 mm                    |
| Single wire, material          | PVC                       |
| Single wire, color             | black, blue, green/yellow |
| Wire diameter incl. insulation | 4.8 mm                    |

### Classifications

#### eCl@ss

|            |          |
|------------|----------|
| eCl@ss 4.0 | 272607xx |
| eCl@ss 4.1 | 27260701 |
| eCl@ss 5.0 | 27260701 |
| eCl@ss 5.1 | 27260701 |
| eCl@ss 6.0 | 27279220 |
| eCl@ss 7.0 | 27440103 |
| eCl@ss 8.0 | 27440102 |

#### ETIM

|          |          |
|----------|----------|
| ETIM 4.0 | EC002061 |
| ETIM 5.0 | EC002635 |

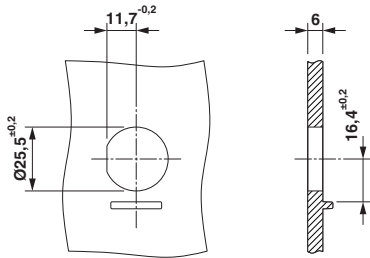
#### UNSPSC

|               |          |
|---------------|----------|
| UNSPSC 6.01   | 30211923 |
| UNSPSC 7.0901 | 39121522 |
| UNSPSC 11     | 39121522 |
| UNSPSC 12.01  | 39121522 |
| UNSPSC 13.2   | 39121522 |

### Drawings

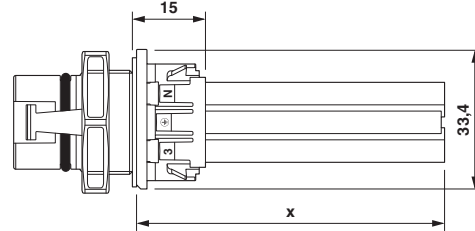
# Device connector, rear mounting - PRC 3-FT25-MC6-150 - 1409221

Dimensional drawing



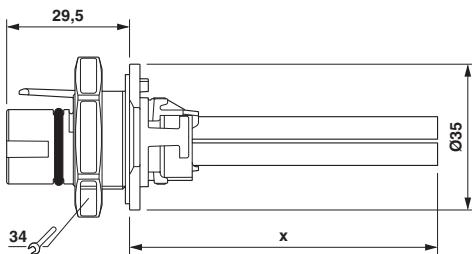
Housing cutout

Dimensional drawing



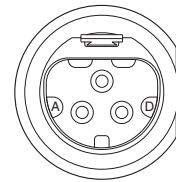
Dimensional drawing

Dimensional drawing



Dimensional drawing

Schematic diagram



Connector pin assignment